

COMMAND™ HOOKS INSTRUCTIONS FOR USE

**EASY
ON**



1 **WIPE WALL** lightly with rubbing alcohol.



2 **REMOVE BLUE LINER.**
PRESS adhesive to hook.



3 **REMOVE BLACK LINER.**
PRESS hook firmly against the wall.



4 **SLIDE HOOK UP** and off the mounting base.



5 **PRESS BASE FIRMLY** for 30 seconds.



6 **SLIDE HOOK BACK ON** the mounting base.
WAIT 1 HOUR before hanging anything.

**EASY
OFF**



1 **SLIDE HOOK UP.**



2 **GENTLY HOLD**
MOUNTING BASE.
STRETCH the strip.



3 **PULL** Tab
STRAIGHT DOWN.

DAMAGE-FREE HANGING SURFACES



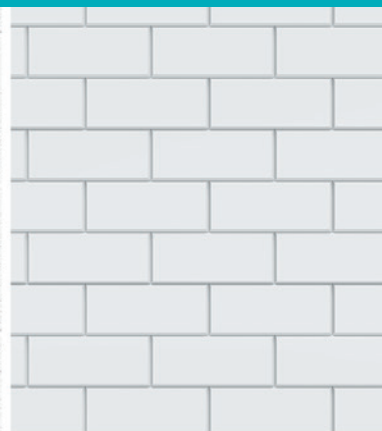
Painted Walls



Painted/Varnished Wood



Painted Cinder Block or Concrete



Tile



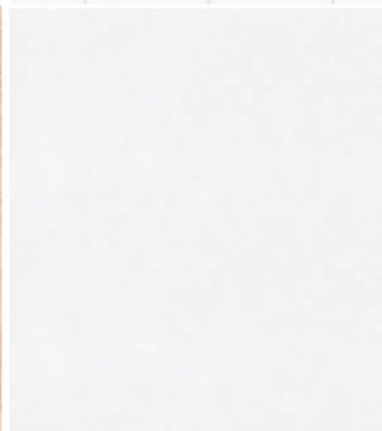
Metal



Glass



Laminates

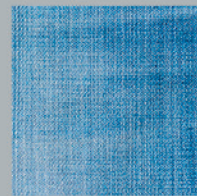


Smooth Solid Surface
(Most Plastics, Acrylic, PVC, PE, PP)

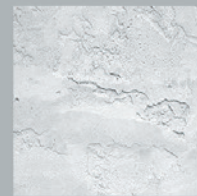
Do Not Use On



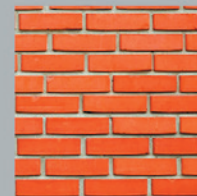
Wallpaper



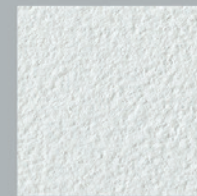
Fabrics



Textured Walls or Textured Surfaces



Brick

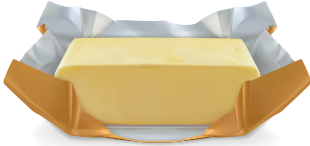


Other rough and non-stick surfaces

HOW MUCH DOES YOUR ITEM WEIGH?

225g

0.5 lb.



450g

1 lb.



900g

2 lb.



1.3kg

3 lb.



1.8kg

4 lb.



2.2kg

5 lb.



3.6kg

8 lb.



5.4kg

12 lb.



7.2kg

16 lb.



**COMMAND™ WEIGHT
REFERENCE GUIDE**