

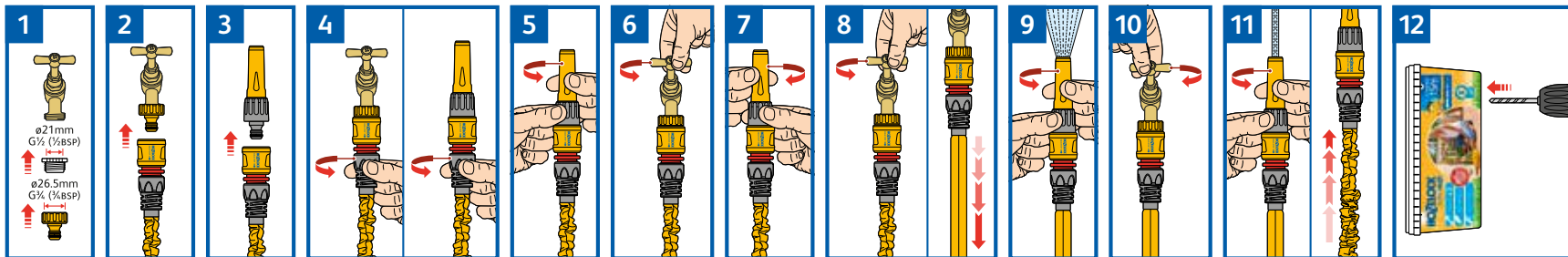


HOZELOCK SUPERHOZE

Quick Start Guide

33609-000

www.hozelock.com



Superhose Quick Start Guide

- Fit the yellow tap connector onto your tap. Use the white adaptor if required. (fig.1)
- Attach one end of your Superhose to the tap connector. (fig.2)
- Connect the nozzle to the other end of your Superhose. (fig.3)

Before each use

- Check that the connectors are fully tightened onto the hose at both ends. (fig.4)
- Ensure the nozzle is fully open by turning it in an anti-clockwise direction, whilst pointed away from you. (fig.5)
- Turn the water on at the tap slowly. Allow water to run through Superhose for a few seconds to flush through any trapped air. (fig.6)
- Close the nozzle fully by turning it in a clockwise direction. (fig.7)
- Turn the water supply tap on fully. Watch as your Superhose expands. (fig.8)

- Once Superhose has stopped expanding, open up your nozzle and begin your watering tasks. (fig.9)

Once you have finished watering

- Turn off the water supply tap fully. (fig.10)
- Open the nozzle to release the water and allow Superhose to return to its original length. (fig.11) Ensure all water has been drained from Superhose. To prolong the life of your Superhose, drain water completely after each use and keep indoors during the winter or during cold spells.
- Turn your Superhose packaging into a storage device, by making a hole in the bottom of the tub to allow any residual water to escape. (fig.12) It is also suggested to leave the lid off to aid ventilation.

Do's and Don'ts

Do:

- Do soak the hose in water twice for a recommended 5-10 minute period before first use to avoid any transfer of colour onto clothes or other garden objects.
- Do make sure connectors are fully tightened fully onto the hose before each use. (see fig.4)

- Do hold the nozzle whilst emptying the hose of water after use and dispose of waste water responsibly, by using it to water your flowerbeds or pots.
- Do connect Superhose to a mains tap water supply. Superhose will not work if connected to a header tank or water butt.
- Do use Superhose for general, domestic garden use such as watering flowers and plants, outdoor cleaning tasks e.g. car or caravan cleaning.

Do not:

- Do not cut the hose.
- Do not leave the hose pressurised in direct sunlight.
- Do not stretch the hose without water.
- Do not allow the hose to freeze.
- Do not drink from the hose.
- Do not allow children to play with the hose unsupervised.
- Do not use with pressure or jet wash products.

For more "Hints & Tips" on troubleshooting and how to use Superhose, please visit;

<http://www.hozelock.com/hints-and-tips/>

Troubleshooting

Problem	Solution
The hose is not expanding.	Check that your nozzle or hose end is closed fully. Turn on water supply tap fully. You may not have enough water pressure at your property.
Connectors are leaking.	Check that the connectors have been tightened fully. (see fig.4) Check that an O-ring is present and in good condition on the end of the nozzle and the tap connector. If they are still leaking, call Hozelock Customer Services.
Fabric has become discoloured or dirty.	Clean with warm, soapy water and leave to dry fully.
The hose has developed an odour.	Leave in open air to dry fully. Clean with warm, soapy water and leave to dry fully.

