

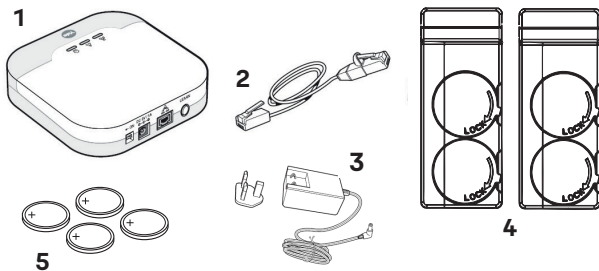
Yale SensCheck Window Sensor Manual



IA-302 and AC-WSM

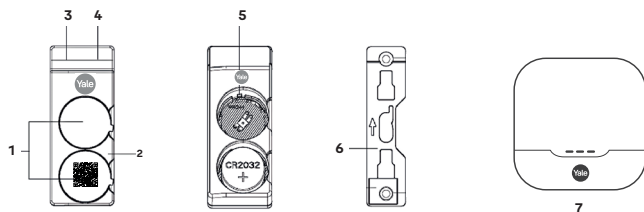
The Yale SensCheck Window Sensor monitors the status of your window. It can detect if the window is open, locked in the closed position, or locked in the vented position. The window status will be shown in your **Yale Smart Living Alarm App**.

What's in the box



| | | IA-302 | AC-WSM |
|----|---------------------------------|--------|--------|
| 1. | 1 x Yale Sync Hub | ✓ | |
| 2. | 1 x Ethernet cable | ✓ | |
| 3. | 1 x Power supply | ✓ | |
| 4. | 2 x Smart Module | ✓ | ✓ |
| 5. | 4 x CR2032 3V Lithium batteries | ✓ | ✓ |

Identifying the Parts



1. Battery lids
2. Red LED Indicator
3. Sensor Area 1 (Venting Position)
4. Sensor Area 2 (Closed Position)
5. Learn Button
6. Mounting Bracket (already fitted to the Yale smart window)
7. Yale Sync Hub

Tools required



Pozi screwdriver



Flat blade
screwdriver



Pointed
object

Important Information

1. We may need to update your firmware during set up. Please click **'confirm'** if prompted.
2. Your Yale App may want to send notifications to your mobile phone. If requested please click **'allow'**.

Getting Started

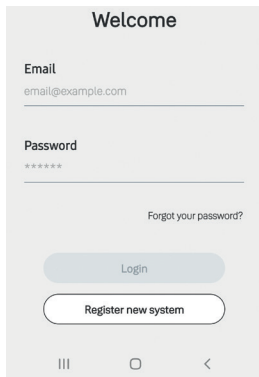
Step 1

If you already have a Yale Sync Hub installed in your home, please go to the top left Menu button on your Yale Smart Living Alarm App and select **'Add Device'**. You can now proceed to Step 4.

If you do not have a Yale Sync Hub currently installed, download the **Yale Smart Living Alarm App** from the App Store or Google Play Store.

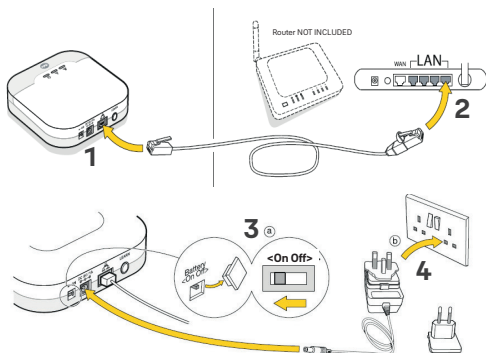


Click **'Register new system'** and continue to the **'Start Installation Wizard'**.



Getting Started

Step 2



Connect Yale Sync Hub

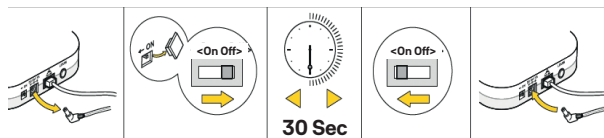
1. Connect the Ethernet cable to the Yale Sync Hub.
2. Make sure the other end is in a free internet port in your home router.
3. Remove the small rubber battery switch cover. Move the switch to ON, then replace the rubber cover*.
4. Connect the power cable.

After approx. 30 seconds you will see a solid green LED light on top of the Yale Sync Hub.

* Your Yale Sync Hub is pre-fitted with an integrated battery back up pack.



Important note: Please register the Yale Sync Hub within one hour of power up, otherwise you may receive an app "authentication error". If this happens, switch the Hub on/off following the steps seen below and continue with your installation.



Account set up

Step 3

Follow the step by step guide on your smartphone to create your account.

Hints and tips:

Your password must be between 12 and 255 characters long and include:

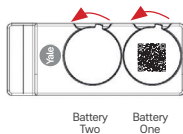
- 1 Uppercase character
- 1 Lowercase character
- 1 Digit or special character

Your Master PIN code must be 4 digits.

Step 4: Select 'I am adding an alarm device'.

Inserting the batteries

Step 5: Fit Battery One into your Window Sensor and Select '**Activate learning mode**' on your Yale Smart Living Alarm App.



Using a pointed tool press and release Learn button (5) on Window Sensor.



If the Yale Sync Hub successfully received the signal, it will double-beep and the Yale Smart Living Alarm App will list the sensor as shown in the image on the right.

At this stage, you can name your sensors - i.e. Kitchen Window. Once renamed click '**Add this**



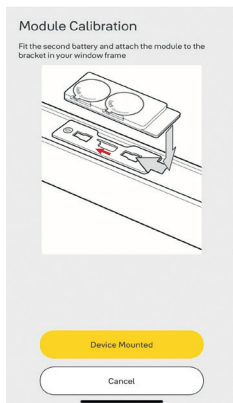
Smart Module Calibration



Step 6: Press 'Learn' button on your Smart Module for 10 seconds. Once you see a red LED on your sensor, release and select '**Button Pressed**' on your Yale Smart Living Alarm App screen.

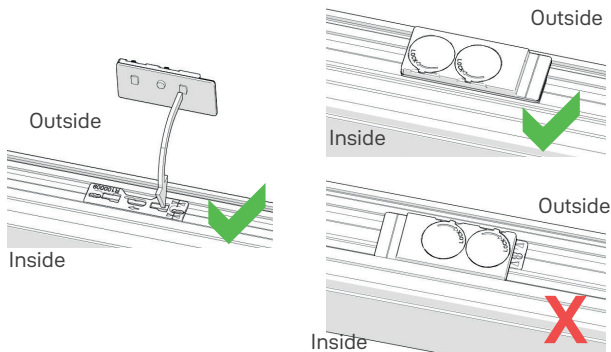
Step 7: Fit Battery Two into the Smart Module.

Attach sensor module to the bracket as shown in direction indicated by arrow and select '**Device Mounted**'.



Fitting the smart module to the bracket

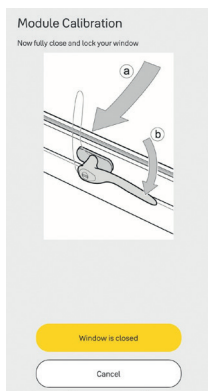
Step 8: From inside your home, insert the moulded boss features found on the underside of your window sensor into the frame bracket. Slide the window sensor onto the bracket with the battery lids facing inwards.



If installed correctly, the window sensor will sit aligned with the bracket. If your window sensor is overhanging the window bracket, please remove and refit correctly.



Smart Module Calibration

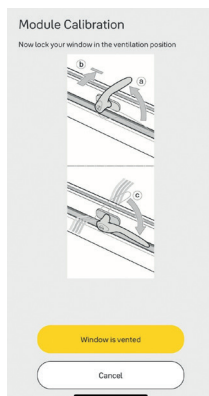


Step 9: Fully close and lock the window.

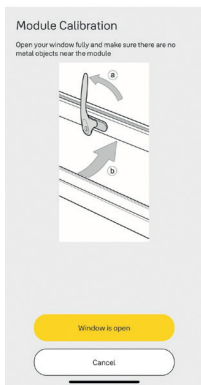
Select '**Window is closed**' on your Yale Smart Living Alarm App.

Step 10: Lock the window in the ventilation position.

Select '**Window is vented**' on your Yale Smart Living Alarm App.



Smart Module Calibration

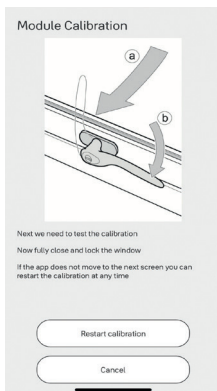


Step 11: Fully open the window.

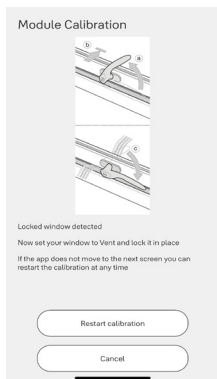
Select '**Window is open**' on your Yale Smart Living Alarm App.

Step 12: Fully close and lock the window.

Wait up to 20 seconds for the app to check the reading and move to the next screen.



Smart Module Calibration

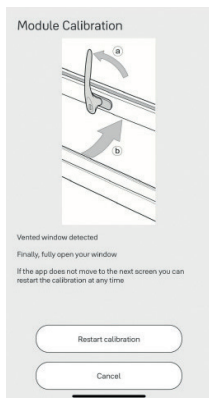


Step 13: Lock the window in the ventilation position.

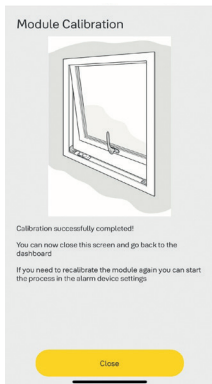
Wait up to 20 seconds for the app to check the reading and move to the next screen.

Step 14: Fully open the window.

Wait up to 20 seconds for the app to check the reading.



Smart Module Calibration



Step 15: Please wait whilst the system confirms the sensor calibration - this can take up to 30 seconds.

Once complete, select '**Close**' on your Yale Smart Living Alarm App.

Congratulations, you have successfully installed your Yale SensCheck Window Sensors.

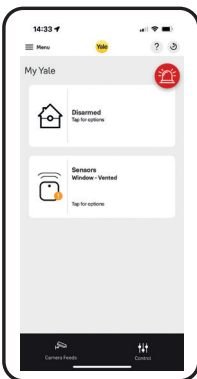
To add additional sensors repeat the process from step 4 or press the '**Yale home**' icon.

App alerts

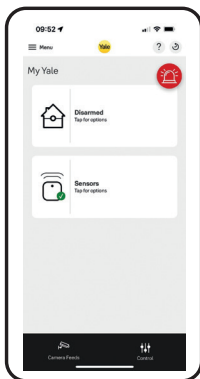
Following successful installation and calibration of your Smart sensor/s; the following notifications will appear on your Yale Smart Living Alarm App Dashboard:



Red **X** indicates a (named) window is open



Amber **!** indicates a (named) window is vented



Green **✓** indicates all windows are closed and locked

Now you have successfully completed your installation, let's personalise your sensors.

Personalisation

Geofencing

To receive notifications regarding the status of your Yale Smart Sensors when leaving your property, go to the top left menu button on your Yale Smart Living Alarm App:

Settings > Users > Notifications > Geo-notifications

Move the yellow circle to position your geo-boundary and click '**Save**'. Press and hold on the map to set your home location.

Important note: Please enable location services on your mobile phone.

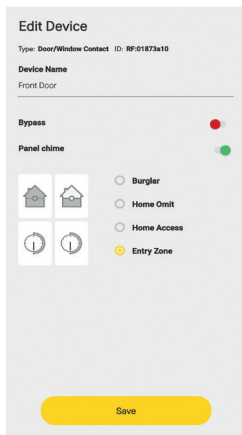


Personalisation

Chime notifications

To turn an audible chime on/off every time your window is opened, go to the top left menu button on your Yale Smart Living Alarm App:

Settings > Alarm Settings > Devices > Select named sensor > Panel Chime (on/off)> Save

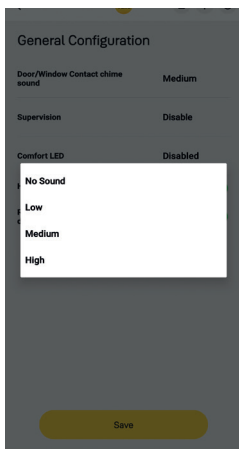


Personalisation

Chime notifications

To set the volume of your audible chime every time your window is opened, go to the top left menu button on your Yale Smart Living Alarm App:

Settings > Alarm settings > System settings > General configuration > Door/ window chime sounds > Save



Useful information

Changing the Batteries

Twist the battery lids to unlock in the direction indicated on the battery lids until the batteries pop up. (This is easiest when the sensor is removed from the window frame).

After the batteries have been removed, use a pointed tool to press the Learn button 5-6 times to fully discharge before inserting the new batteries.

When you want to change the batteries, you can see a simple guide at any time by going to the device settings in **Menu > Settings > Alarm Settings > Devices** and click on **'Help (?)'** at the top of the screen.



Useful information

Batteries

The Yale SensCheck Window Sensor uses two CR2032 3V Lithium batteries as its power source. When the battery is low, a low battery signal will be sent to the app and displayed as a warning on the app dashboard.

The Red LED will light up when the Window Sensor is activated under low battery status. When it is time to change the batteries in the module, the app will show you a warning. Go to:

Menu > Settings > Alarm Settings > Devices > Battery Change.

This will handle bypassing the device so you don't set off the alarm. The app will link you to instruction for changing the batteries.

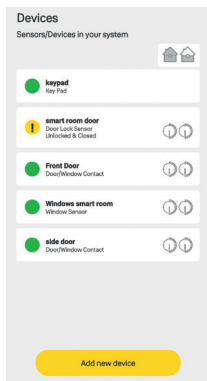
When the battery is exhausted, the Window Sensor will stop all function and the Red LED will flash every 4 seconds.

Useful information












Sensor Status

To view the status of your sensors, go to the top left menu button on your Yale Smart Living Alarm App:

Settings > Alarm Settings > Devices



Trouble Shooting

| | |
|--|--|
| Fault Status Shows fault status and AC failure warning |  Check app history log to see fault details.     System normal |
| Alarm Mode Shows arming status |   Fully Armed   Part Armed   Disarmed |

If you continue to have issues please visit <https://help.yale.co.uk>

Smart Together

Intelligently connected, our Sync Smart Home Alarm works with Google Assistant and Amazon Alexa, combining sound and voice to create the ultimate security deterrent.



Google and Google Play are trademarks of Google LLC.

Amazon, Alexa and all related logos are trademarks of Amazon.com, Inc. or its affiliates.

** For information on Amazon Alexa skills and country compatibility please refer to Amazon's website.



Scan QR tag for help and support and to view additional products within the Yale range

www.yalehome.co.uk

ASSA ABLOY Nederland B.V.
Postbus 40
4940 AA Raamsdonksveer
Nederland

ASSA ABLOY Opening Solutions
UK & Ireland
School Street, Willenhall
West Midlands, WV13 3PW UK

Version 2B

**Trusted
every day**

