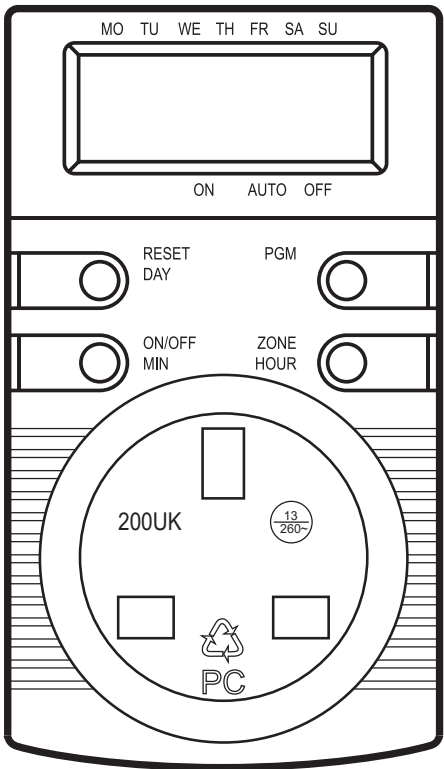


EN 7 day Electronic Timer

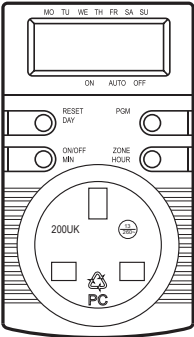


EN IMPORTANT - These instructions are for your safety. Please read through them thoroughly prior to handling the product and retain them for future reference.

V10324_5052931365128_MAND2_2324

5052931365128

EN Parts

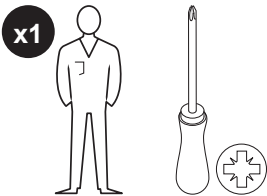


01. x1



02. x1

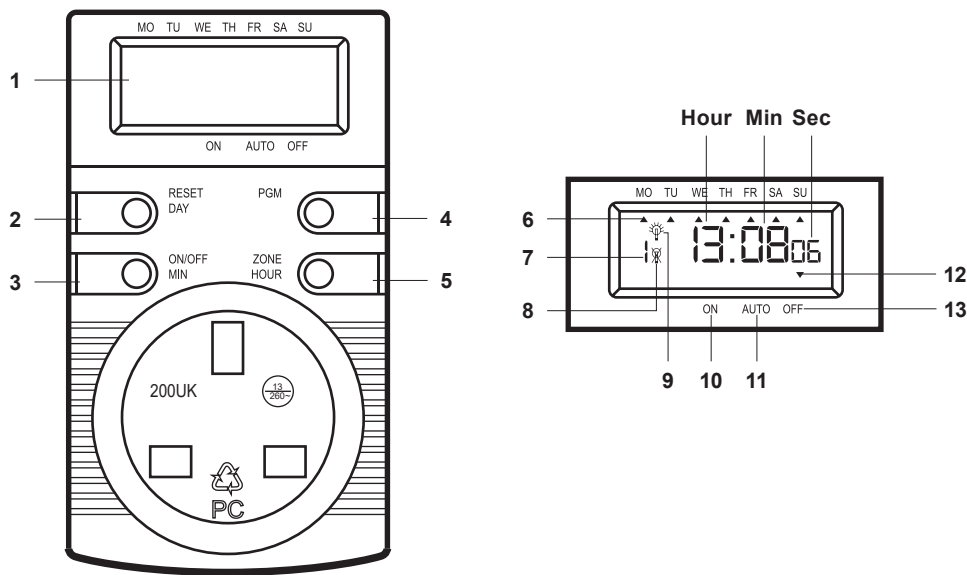
EN You will need



EN Contents

| EN | |
|----------------------|----|
| Product description | 3 |
| Safety | 4 |
| Guarantee | 5 |
| Function and Setting | 6 |
| Care & maintenance | 10 |

EN Product description



| No | Description | Function |
|----|----------------------------|--|
| 1 | LCD | Shows time and program setting |
| 2 | Day button | Day setting/Reset or Restore |
| 3 | MIN Button | Press the button to start/stop countdown program when it is in AUTO status |
| 4 | PGM button | Programming mode |
| 5 | Zone button | Hour setting/Summer or Winter time setting |
| 6 | LCD display | Effective days for programme set |
| 7 | LCD display | 1st programme |
| 8 | LCD display | Power off setting state |
| 9 | LCD display | Power on setting state |
| 10 | LCD display Icon on screen | Power on at all time |
| 11 | LCD display Icon on screen | Programmes set are only effective under "AUTO" state |
| 12 | LCD display Icon on screen | ON/AUTO/OFF stae display |
| 13 | LCD display Icon on screen | Power off at all time |



EN Safety

EN

Before you start



WARNING! PRODUCT CONTAINS A COIN/BUTTON CELL



WARNING KEEP OUT OF REACH OF CHILDREN! SWALLOWING CAN LEAD TO CHEMICAL BURNS, PERFORATION OF SOFT TISSUE, AND DEATH. SEVERE BURNS CAN OCCUR WITHIN 2 HOURS OF INGESTION. SEEK MEDICAL ATTENTION IMMEDIATELY.

Safety



WARNING! DO NOT USE THIS PRODUCT TO CONNECT COOKER HOODS/BOILERS/ CENTRAL HEATING SYSTEMS, OR FOR OTHER SIMILAR FIXED INSTALLATION APPLIANCES.



WARNING! ONLY USE THIS PRODUCT WITH ELECTRICAL APPLIANCES WHICH PRODUCE RESISTIVE LOADS.



WARNING! NEVER CONNECT ELECTRICAL APPLIANCES WHICH PRODUCE INDUCTIVE LOADS (E.G. FANS, REFRIGERATORS, DISHWASHERS, WASHING MACHINES, ELECTRIC MOTORS ETC.).



WARNING! DO NOT USE THIS PRODUCT WITH SPOT HEATING APPLIANCES/DEHUMIDIFIERS.

- Connect this product to a properly grounded socket outlet (230 V~, 50 Hz).
- The product must be easily accessible so it can be unplugged from the socket outlet if needed in case of emergency.
- Do not connect this product in series.
- Do not cover this product during operation.
- Do not use this product with extension cords.
- Do not exceed maximum rated wattage of 3680 W.
- Do not immerse in water or any liquids.
- This product is not a toy. Keep away from children and pets.
- The built-in battery is not replaceable.



WARNING! RISK OF ELECTRIC SHOCK! DO NOT OPEN THE ENCLOSURE OF THE PRODUCT. NO USER SERVICEABLE PARTS INSIDE.



WARNING! THE PRODUCT IS VOLTAGE-FREE ONLY WHEN UNPLUGGED FROM SOCKET OUTLET.



WARNING! AVOID EXTREME TEMPERATURES, VIBRATIONS AND IMPACTS.

| | |
|---|---|
|  | Conformity with all relevant EC Directive requirements |
|  | Conformity marking used for products being placed on the market in Great Britain (England, Scotland and Wales) |
|  | Waste electrical products should not be disposed of with household waste. Please recycle where facilities exist. Check with your Local Authority or local store for recycling advice. |

Technical specification

| | |
|------------------------|------------------------------|
| Voltage supply: | 240 V~, 50 Hz |
| Battery type: | 1.5 V Button battery (LR920) |
| Max. Power: | 3120 W |
| IP Rating: | IP20 |
| Working temperature: | 0-55 °C |
| Time setting interval: | 1 min |
| Pollution degree: | 2 |
| Rated impulse voltage: | 2.5 kV |
| Number of program: | 10 |

Environmental Protection



Waste electrical products should not be disposed of with household waste. Please recycle where facilities exist. Check with your local authority for recycling advice.

Guarantee

We take special care to select high quality materials and use manufacturing techniques that allow us to create products incorporating design and durability. This product has a manufacturer's guarantee of 2 years against manufacturing defects, from the date of purchase (if bought in store) or date of delivery (if bought online), at no additional cost for normal (non-professional or commercial) household use.

To make a claim under this guarantee, you must present your proof of purchase (such as a sales receipt, purchase invoice or other evidence admissible under applicable law), please keep your proof of purchase in a safe place. For this guarantee to apply, the product you purchased must be new, it will not apply to second hand or display products. Unless stated otherwise by applicable law, any replacement product issued under this guarantee will only be guaranteed until expiry of the original period guarantee period.

This guarantee covers product failures and malfunctions provided the product was used for the purpose for which it is intended and subject to installation, cleaning, care and maintenance in accordance with the information contained in these terms and conditions, in the user manual and standard practice, provided that standard practice does not conflict with the user manual.

This guarantee does not cover defects and damage caused by normal wear and tear or damage that could be the result of improper use, faulty installation or assembly, neglect, accident, misuse, or modification of the product. Unless stated otherwise by applicable law, this guarantee will not cover, in any case, ancillary costs (shipping, movement, costs of uninstalling and reinstalling, labour etc), or direct and indirect damage.

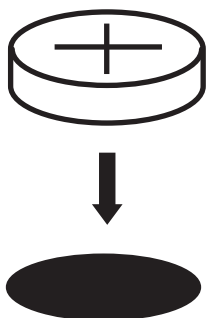
If the product is defective, we will, within a reasonable time, refund.

Rights under this guarantee are enforceable in the country in which you purchased this product. Guarantee related queries should be addressed to the store you purchased this product from.

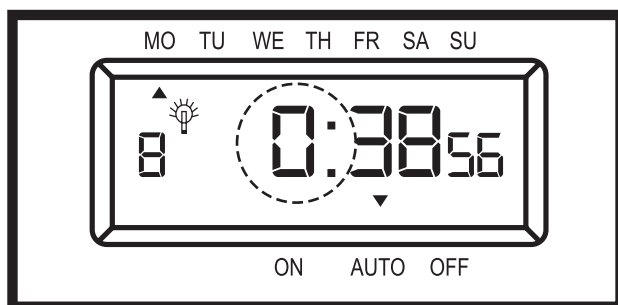
The guarantee is in addition to and does not affect your statutory rights.

**IMPORTANT - RETAIN THIS INFORMATION
FOR FUTURE REFERENCE:
READ CAREFULLY**

Before Starting

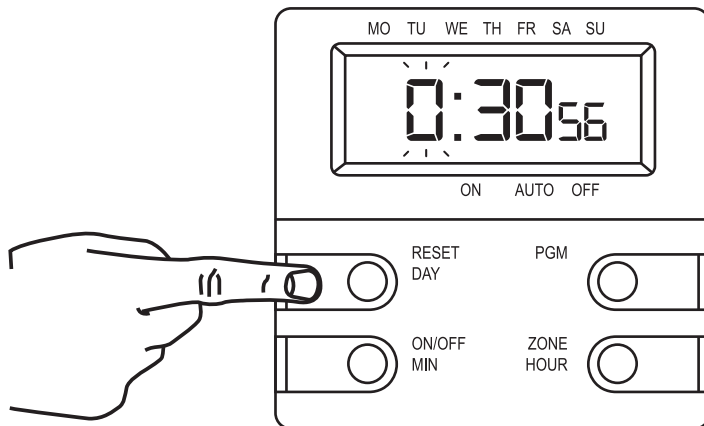


- Insert the battery at the back of the product.

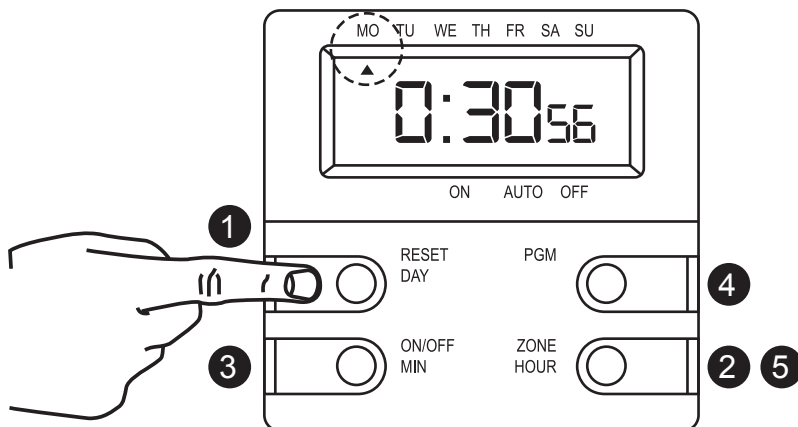


- Product will turn on.
- LCD flashes, it means you are in the time setting mode.

Time Setting

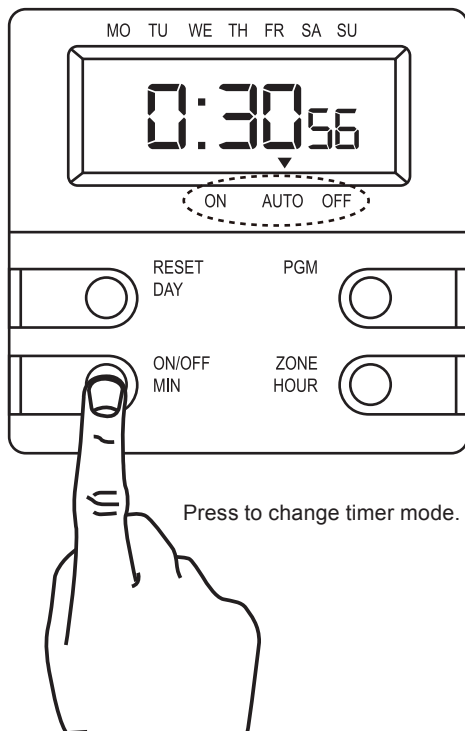


- Press and hold 3s « Reset Day » to enter time setting mode.
- Clock will flashes to confirm time setting mode.



- 1 Press to move arrow and choose day.
- 2 Press to increase hour.
- 3 Press to increase minutes.
- 4 Press to exit Setting Mode.
- 5 Hold to switch to Summer Mode.

Program Setting



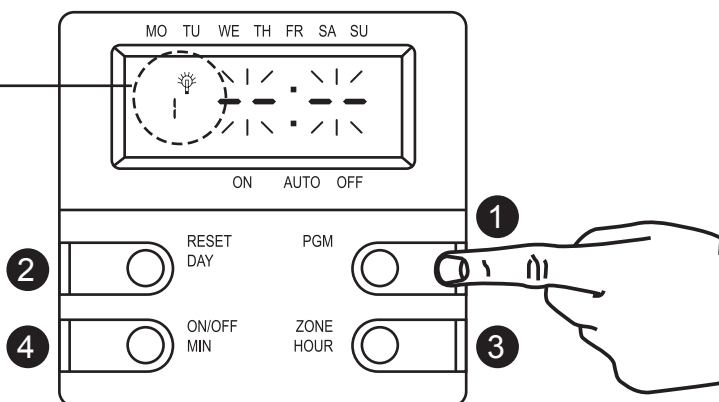
- « ON » means the timer is always turned ON.
- « **AUTO** » means **timer scheduling is activated** → refer to next slide for scheduling mode.
- « OFF » means the timer is always turned OFF.



Program number is number 1

💡 Light bulb ON means you define the 'turn ON' time start setting.

🚫 Light bulb OFF means you define the 'turn OFF' time start setting.



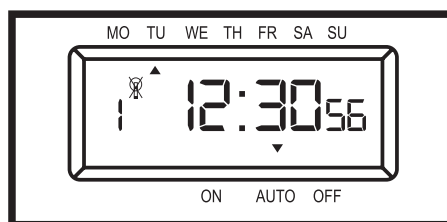
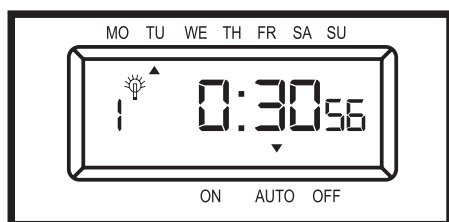
1 Press to choose program to define.

2 Press to change day.

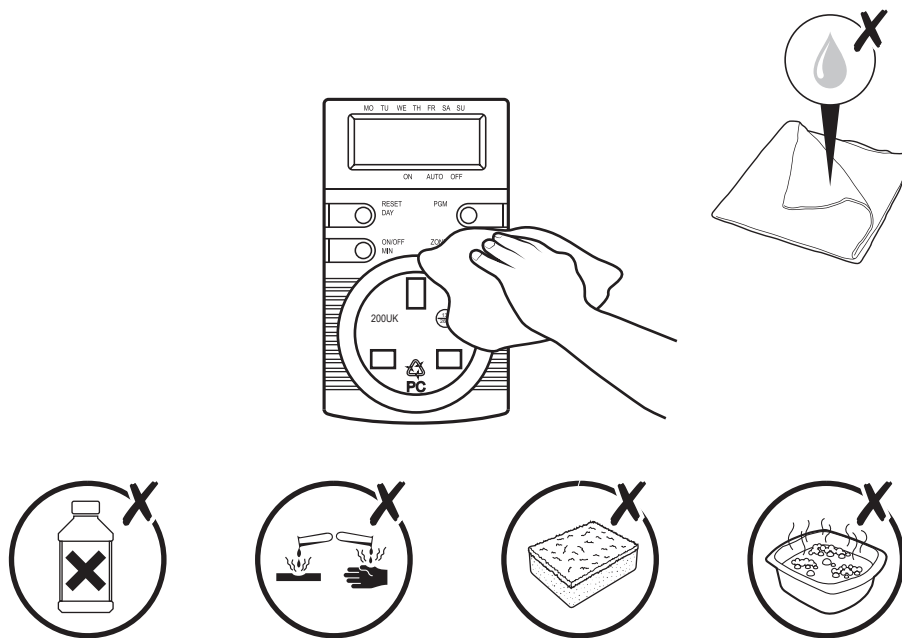
3 Press to change hour.

4 Press to change minutes.

- You can set up to 10 programs
- You must configure each program firstly to pass to the next one



- Example: The program n°1 will turn on every tuesday from 0:30 to 12:30.



Manufacturer:**UK Manufacturer:**

Kingfisher International Products Limited,
1 Paddington Square, London, W2 1GG,
United Kingdom

EU Manufacturer:

Kingfisher International Products B.V.,
Rapenburgerstraat 175E,
1011 VM Amsterdam,
The Netherlands

EN www.diy.com
www.screwfix.com
www.screwfix.ie

**To view instruction manuals online,
visit www.kingfisher.com/products**