

GoodHome 

Coloured paint guide



**Expert help & advice for all your
interior paint projects**

available at

B&Q



A world of good

Hello. And a warm welcome to GoodHome.

We are the home improvement lifestyle brand that makes it simpler for anyone to upgrade, elevate and better organise their living space to enjoy a better life.

From kitchens and bathrooms to storage and decoration, we inspire, guide and motivate everyone to create a good home.

We're introducing our GoodHome interior paint range - developed by our experts with you in mind. We've created the perfect balance of great quality, colour and value, and aim to reduce the impact of paints on the environment.

The right colour for the right room

Lighting can affect the way we perceive colour; whether it's natural or artificial light. The size and number of windows, their directional placement, and seasonal light can all change how a colour can look.

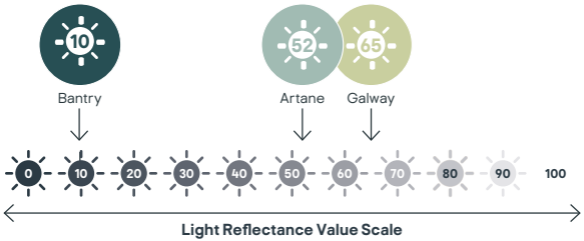
North facing room	South facing room	West facing room	East facing room
Warm tones e.g. Toronto, Sakai	Cool tones e.g. Clontarf, Whistler	Warm neutrals e.g. Santa Fe, Ottawa	Cool and calm colours e.g. Artane, Toulon

What is Light Reflectance Value?

LRV (Light Reflectance Value) is a value of how much light a colour reflects or absorbs.

A colour with an LRV above 50 will reflect more light than it absorbs, so choose these colours to make the most of the light in your room.

A colour with an LRV below 50 will absorb more light than it reflects creating a cosier atmosphere. For these colours you may want to think more about your lighting scheme to account for your darker colour choice.



Saint Raphaël



Understanding the range

All 60 colours are available in a matt finish in both our walls and ceilings and durable formulations, and also in a silk finish in our walls and ceilings formulation.

B

Bathroom

T

Wood and metal trims

U

Ultra Cover

K

Kitchen

G

Glitter effect paint



Light reflectance value

Choose the right paint for your needs



GoodHome walls & ceilings
Tester, 2.5L & 5L
Matt and silk



GoodHome tough & durable
Tester, 2.5L & 5L
Matt



GoodHome Ultra Cover
Tester & 2.5L
Matt

	GoodHome walls & ceilings Tester, 2.5L & 5L Matt and silk	GoodHome tough & durable Tester, 2.5L & 5L Matt	GoodHome Ultra Cover Tester & 2.5L Matt
Number of coats	2*	1-2*	1*
Low odour	●	●	●
Wipeable	●	●	●
Washable	○	●	○
Stain resistant	○	●	○
Also suitable for wood & metal (with a suitable primer)	○	●	○
Minimal VOCs	●	●	●



GoodHome kitchen
Tester & 2.5L
Matt



GoodHome bathroom
Tester & 2.5L
Soft sheen



GoodHome glitter & metallic paints
2L

	GoodHome kitchen Tester & 2.5L Matt	GoodHome bathroom Tester & 2.5L Soft sheen	GoodHome glitter & metallic paints 2L
Number of coats	2*	2*	2*
Low odour	●	●	●
Wipeable	●	●	●
Washable	●	●	○
Stain resistant	●	●	○
Mould resistant	○	●	○
Moisture resistant	●	●	○
Grease resistant	●	○	○
Minimal VOCs	●	●	●

*Number of coats will vary depending on paint colour, surface condition and painting tools. For more information visit diy.com.



Hempstead

B K U -69



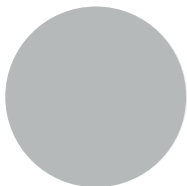
Whistler

B K U -71



North Pole

B K T U -91



Peoria

-55



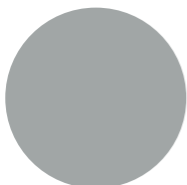
Melville

B K T U -58



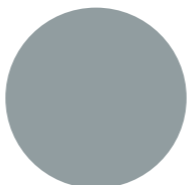
Hamptons

B K G T U -65



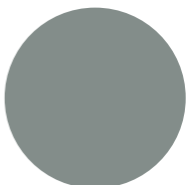
Brooklyn

B K G T U -45



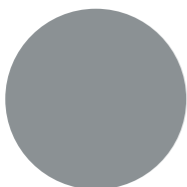
Minneapolis

-36



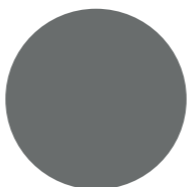
Manhattan

-35



Delaware

B K G T -34



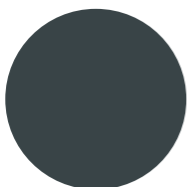
Hamilton

B K U -21



Philadelphia

-53



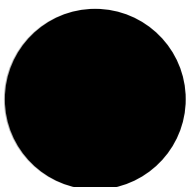
Princeton

K T -12



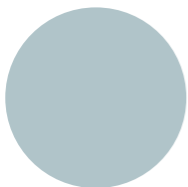
Louisville

-7



Liberty

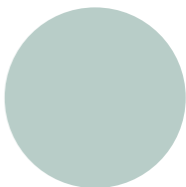
K G T -2



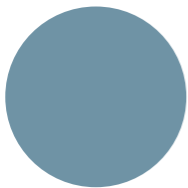
Toulon



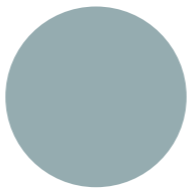
Alberta



Clontarf



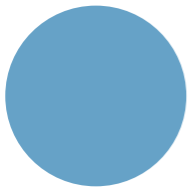
Monaco



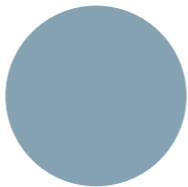
Lourmarin



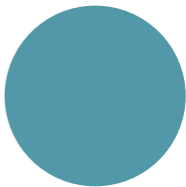
Artane



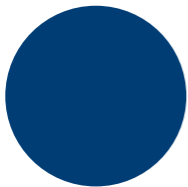
Fréjus



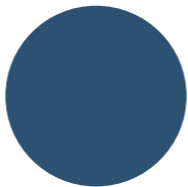
Fayence



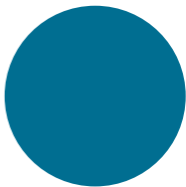
Nice



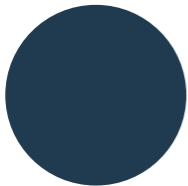
Valbonne



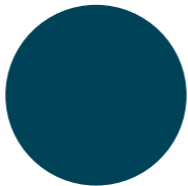
Saint Raphaël



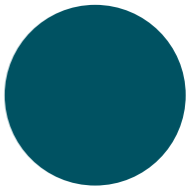
Marseille



Vence



Antibes



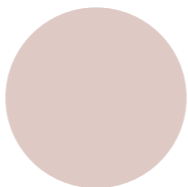
Sainte-Maxime





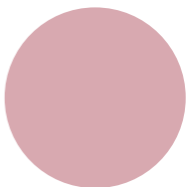
Ottawa

B K T U 87



Kyoto

G U 66



Hyogo

G T 57



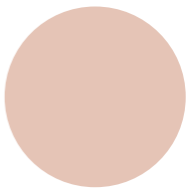
Limerick

K G T U 43



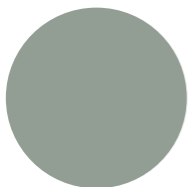
Galway

B 65



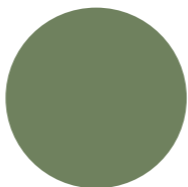
Isumi

G 64



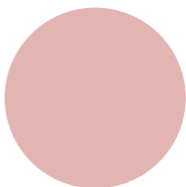
Carlow

38



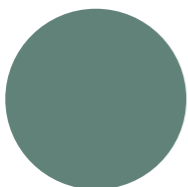
Edenberry

23



Sakai

G 63



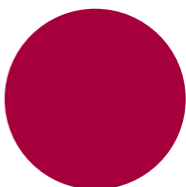
Kilkenny

B 29



Ballina

15



Himonya

14



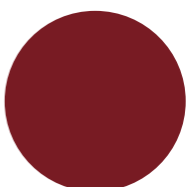
Milltown

K 18



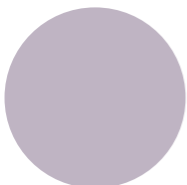
Bantry

10



Fulham

T 12



Hokkaido

G T 54



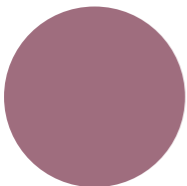
Toronto

B T 83



Valdez

77



Morioka

27



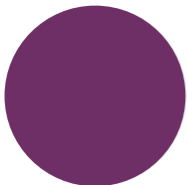
San Jose

67



Chiapas

66



Shizuoka

8



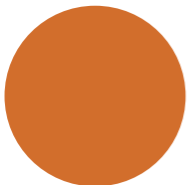
Andalusia

70



Cancún

B K T U 63



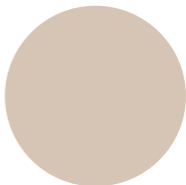
Valencia

31



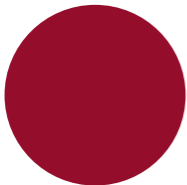
Gran Via

56



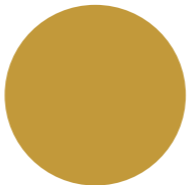
Santa Fe

60



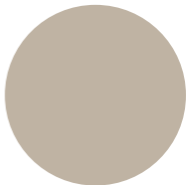
Chelsea

11



Chueca

K T 42



Tijuana

K G T 52

NATURÉA

by GoodHome 

Our first paint range containing
bio-sourced ingredients¹



Naturéa by GoodHome² is a durable, water-based paint that contains resins from renewable bio-sourced raw materials¹.

- Its metal packaging is recyclable³.
- The colour palette is nature-inspired to help you bring the outdoors in.
- It is easy to use, with effortless wall & ceiling application in 2 coats.
- It comes in a beautiful velvet matt finish that is fully washable, so it will withstand the test of time.

1 Estimation of total bio-based content in Naturéa by GoodHome according to ASTM D6866 is approximately 30-35%. The bio-sourced resin in Naturéa by GoodHome is 96% bio-based.

2 Available in larger stores and online at [diy.com](https://www.diy.com)

3 Empty metal packaging can be recycled. Check with local authority for more information.

4 Virtually zero VOC content: 0-0.29%.



High quality washable
formulation



Water-based



Bio-sourced
resin¹



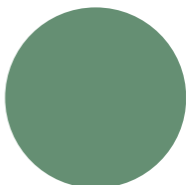
Virtually zero
VOC content⁴



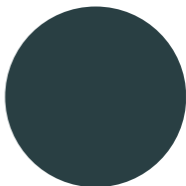
Recyclable
packaging³



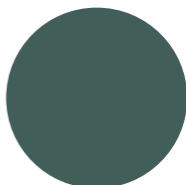
Number
of coats



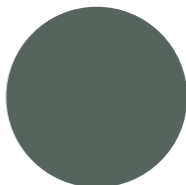
Clover



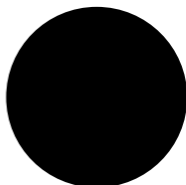
Summer Night



Spruce



Old Moss



Jet Black

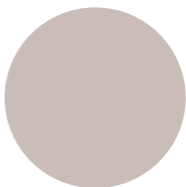




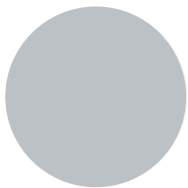
Snow



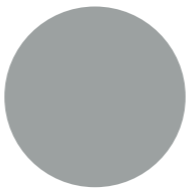
Driftwood



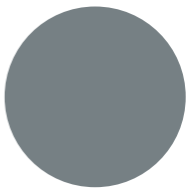
Mushroom



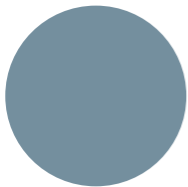
Cloud



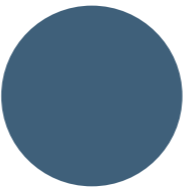
Rain



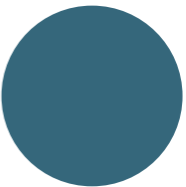
Rock



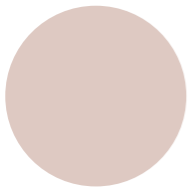
Karner Blue



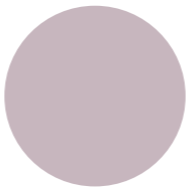
Gentians



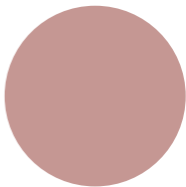
Blue Allium



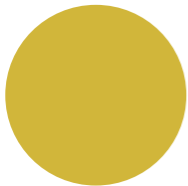
Rosa



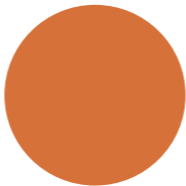
Sweet Pea



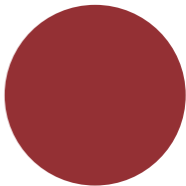
Old Rose



Siskin



Crocsmia



Red Berries



A better life. More affordable.

GoodHome makes a better life more affordable. Exceptional functionality, aesthetic and value – we're the smart choice.

Our GoodHome tough & durable paint has our most hard-wearing formulation and excellent covering power.

- Its stain resistant and washable formulation makes it ideal for hallways, stairwells and children's bedrooms
- It can even be used on wood and metal with a suitable primer.



Accessible for everyone

We ensure good homes are accessible for everyone, by offering co-ordinated and complete design solutions that simplify your choice:

- Your favourite colours are also available in our Renovation paint range, for a coordinated look no matter the surface.
- Plus an even more extensive offer with our exact match colour mixing service available in stores and online at diy.com
- Can't decide? Our GoodHome colour tester pots and stickers allow you to try the paint colour at home.

Reducing the impact of paints

Our paints have lower impact formulations - they're all water based, low odour and have minimal VOCs.

- Recyclable metal cans ¹ or plastic tubs containing minimum 50% recycled plastic.
- Our innovative range, Naturéa by GoodHome², contains bio-sourced ingredients and has a nature inspired colour palette, making it an alternative to traditional paint.

¹ Empty metal packaging can be recycled.

Check with local authority for more information.

² Available in larger stores and online at diy.com

Colour mixing

Now available in the following formulations:

- Tough & durable
- Kitchen & bathroom
- Interior wood & metal
- Exterior wood & metal extreme
- Masonry extreme

Choose from 2000 pre-selected colours using our colour chips in-store, for any surface, indoors or outdoors! We also have an exact colour match service which can mix up to 2.2 million colours!

01

Browse our range of pre-selected colour chips in store.

02

Test the colours in the light box and try pairing them with other colours.

03

Take your chosen colour chip to the mixing desk.

04

Choose your interior or exterior paint type and size and we'll have it ready in minutes.



GoodHome peel & stick colour testers

GoodHome peel & stick colour testers are a mess-free way to check out different colours before you start decorating.

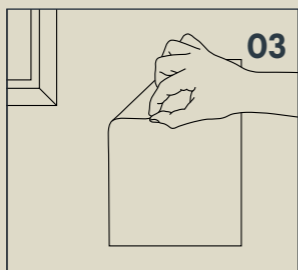
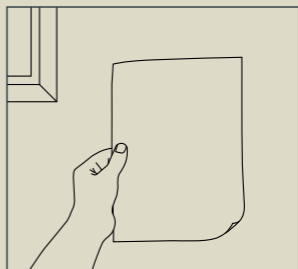
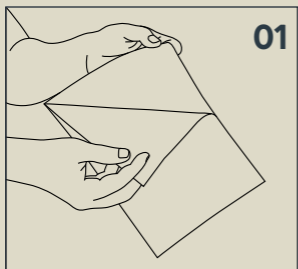
- Repositionable
- Free delivery
- Fits through the letterbox



With this tester, you can see how your colour will look in your home in an instant.

After applying, they are easily repositionable, so you can check how the colour would look on different walls and in different lighting.

You can be confident of an exact colour match as these testers are produced on FSC paper with real paint.



- 01** Peel off the sticker
- 02** Position and stick
- 03** Admire and re-apply in different locations

To order your testers visit [diy.com](https://www.diy.com) and search for 'Peel & stick testers'.



Naturéa by
GoodHome
CLOVER
Paint, matt

Naturéa by
GoodHome
SPRUCE
Paint, matt

Naturéa by
GoodHome
DRIFTWOOD
Paint, matt

Naturéa by
GoodHome
BLUE ALLIUM
Paint, matt



Blue Allium



Clover

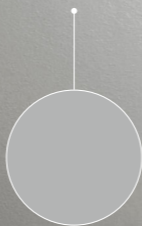


Spruce



Driftwood





**GoodHome
BEVERLY HILLS**

Feature walls paint,
metallic effect

**GoodHome
PHILADELPHIA**

Tough & durable paint, matt



Santa Cruz



Coachella



Beverly Hills



GoodHome
CANCUN
Kitchen paint, matt



Cancún

B K T U 63



Ottawa

B K T U 87



Alberta

B K T U 85



Santa Fe

60



GoodHome PRINCETON

Tough & durable paint, matt



Whistler

B K U - 21



Brooklyn

B K G T U - 45



Delaware

B K G T - 34



Princeton

K T - 12



**GoodHome
MONACO**

Bathroom paint, soft sheen



Monaco

B K U 34



North Pole

B K T U 91



Marseille

B T 19



Sainte-Maxime

13

Ultra Cover

GoodHome Ultra Cover paint is our highest opacity paint, covering most surfaces in one coat, making it ideal for any interior walls and ceilings.

Available in 15 of our most popular colours, this paint has a thick body and smooth matt finish making it easy to apply, meaning you will have a finished result quicker than ever.

As with all our interior paint ranges, our Ultra Cover paint range is waterbased, low odour and has minimal VOCs, so it's safe for you and your home.



Number of coats



Water based



Drying time



I'm already in-store, how much paint do I need?

Do not fret! If you don't have the measurements of the space you're painting to hand, but you need to purchase that paint, we've put together a handy paint estimator.

Roller tester

Enough for a small patch on the wall

Interior wood & metal

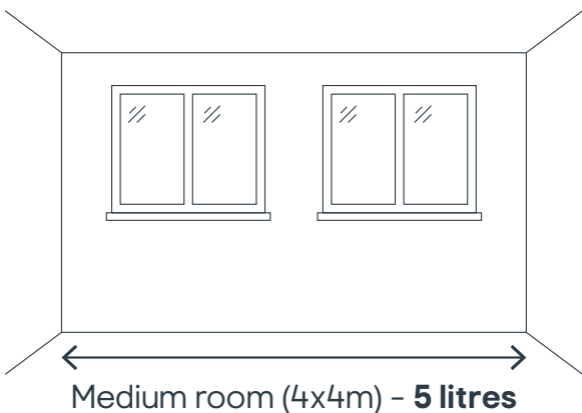
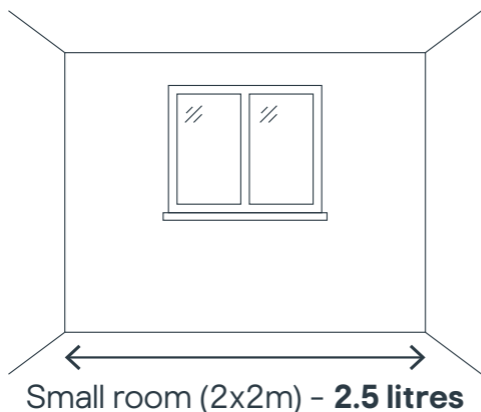
A 750ml tin is perfect for a door or the skirting in a small room

Small room

Around 2.5 litres would cover all walls in a 2m x 2m or equivalent room

Medium room

You'll need about 5 litres to cover all walls in a 4m x 4m or equivalent room



For a more detailed paint calculator visit [diy.com](https://www.diy.com) and search for 'Wall Painting Calculator'.

How to complete your paint project

Prepare

Tools for the job:

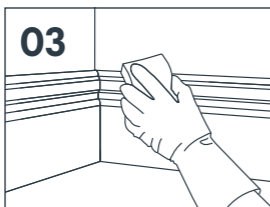
- Sugar soap
- Dust sheets
- Masking tape
- Interior filler
- Filling knife
- Sandpaper



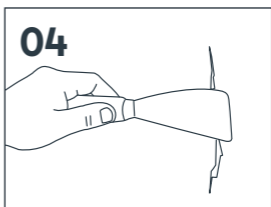
Cover nearby furniture and surfaces



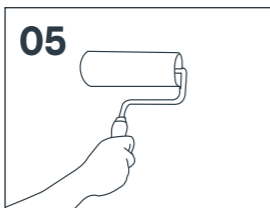
Clean the walls



Sand previously painted wood and metal



Fill any holes and cracks and use masking tape to protect adjoining surfaces



Use a primer on stained or new surfaces including wood & metal



You're ready to paint