

GoodHome 

Renovation paint guide



**Expert help & advice for all
your interior paint projects**

available at

B&Q



A world of good

Hello. And a warm welcome to GoodHome.

We are the home improvement lifestyle brand that makes it simpler for anyone to upgrade, elevate and better organise their living space to enjoy a better life.

From kitchens and bathrooms, to storage and decoration we inspire, guide and motivate everyone to create a good home.

Introducing our GoodHome renovation paint range - developed by our experts with you in mind. We've created the perfect balance of great

Choose the right paint for your needs

Multi surface M

This all-in-one durable paint is easy to use and doesn't even need priming. It can be used to give cabinets, furniture, radiators, wall panelling, tiles and wood or laminate flooring a refresh.

Specific project paint C R S W

Transform cabinets, cupboards, radiators, appliances, all wall tiles and panelling, wood, laminate and tile floors.

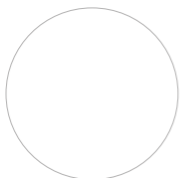
- C Cupboard and cabinet paint
- R Radiator & appliance paint
- S Floor & stair paint
- W Wall tile & panelling paint

Furniture paint F

Perfect for modernising or upcycling old, unloved furniture or personalising something new. This paint is hard-wearing and easy to clean. Its built-in primer makes it easy to use with no fuss.

- Flat matt finish





Pure Brilliant White

M C S R W F



Alberta

M



Ottawa

M



Toronto

M F



Valdez

M



Calgary

F



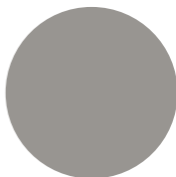
Cancún

M F



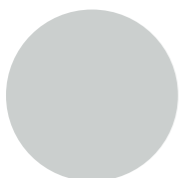
White Plains

F



Long Island

F



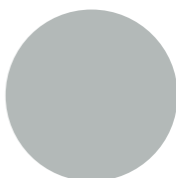
Hamptons

M C S W



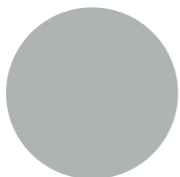
Melville

M



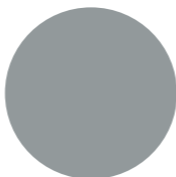
Denali

F



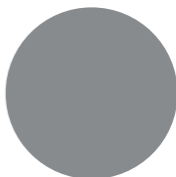
Brooklyn

M



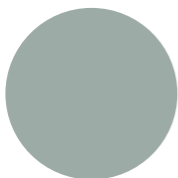
Delaware

M C S W



Queens

F



Tyrone

F



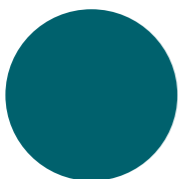
Killarney

F



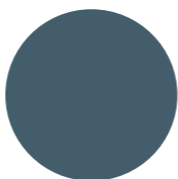
Longford

F



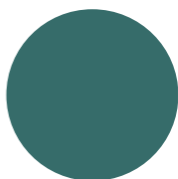
Sainte-Maxime

F



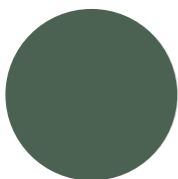
Cap Bénat

F



Milltown

F



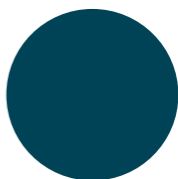
Ballina

F



Bantry

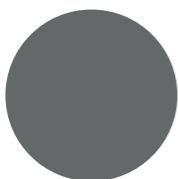
C



Antibes

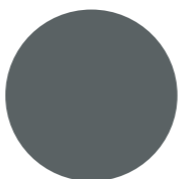
M

F



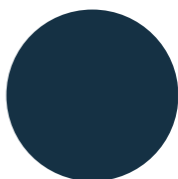
Hamilton

M



Meriden

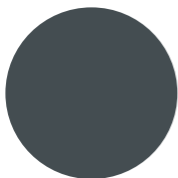
F



Vence

C

F

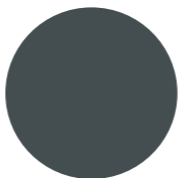


Sedona

C

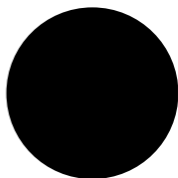
S

W



Princeton

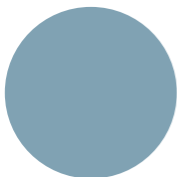
M



Liberty

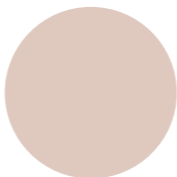
M

F



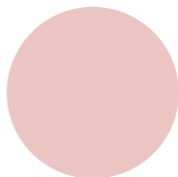
Monaco

F



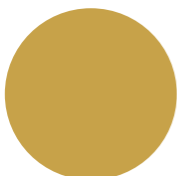
Ikoma

F



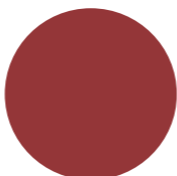
Sakai

F



Chueca

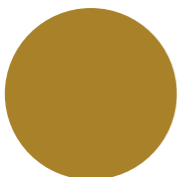
F



Fulham

F

Metallics



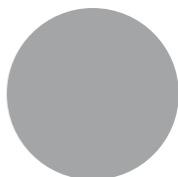
Coachella

F



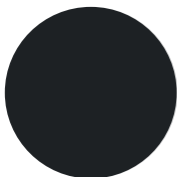
Santa Monica

F



Beverly Hills

F



Pasadena

F

Applying the perfect finishing effects

Once you've applied your chosen GoodHome furniture paint, complete your project by adding a personal touch, or seal the surface to ensure your finish lasts for longer.

Furniture durable lacquer

- Provides a hard-wearing protective layer on your newly painted furniture
- Wipeable and protects against knocks and scratches
- Matt or satin finish



Furniture chalky finishing

- Create a shabby chic finish
- Highlight the finer details of your furniture or interior mouldings



Furniture glitter

- Add to furniture paint to create a sparkle effect
- Create feature or statement pieces of furniture



Furniture finishing wax

Clear wax

- Nourishes and protects your wood surface
- Seals your painted finish
- Stain resistant and easy to clean

White and antique wax

- Create effects or pick out finer details in your furniture



A better life. More affordable.

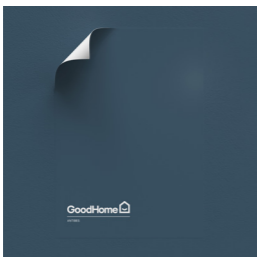
GoodHome makes a better life more affordable. Exceptional functionality, aesthetic and value – we're the smart choice.

Our **GoodHome all-in-one durable multi-surface paint** is ideal for creating a harmonised look across the home working in co-ordination with our GoodHome walls & ceilings paint. Its ultra durable formulation means it will resist everyday stains and scratches.



Accessible for everyone

We ensure good homes are accessible for everyone, by offering co-ordinated and complete design solutions that simplify your choice:



- You'll find the same colours that you love in our GoodHome coloured emulsion range, for an easy coordination on more surfaces!
- Can't decide? Our GoodHome colour testers pots and peel & stick testers allow you to try the paint colour at home in the natural light of the space

Reducing the impact of paints

Our paints have lower impact formulations - they're all water based, low odour and have minimal VOCs.

- Recyclable metal cans¹ or plastic tubs containing minimum 50% recycled plastic
- The GoodHome renovation paint range is a great way to give your existing products a new lease of life!

¹ Empty metal packaging can be recycled. Check with local authority for more information.



GoodHome ANTIBES

Multi-surface paint

GoodHome LIBERTY

Multi-surface paint

GoodHome MELVILLE

Multi-surface paint

Multi-surface paint

GoodHome multi-surface is an all-in-one durable paint which is

Suitable for use on:

- Wood (bare, varnished, painted)
- Laminate
- Melamine
- Plastic
- Metal
- Glass
- Ceramic
- Stone





GoodHome HAMPTONS

Wall & ceilings paint



GoodHome HAMPTONS

Floor & stair paint

Floor & stair paint

GoodHome floor & stair paint is hard-wearing, resistant to household traffic and easy to clean.

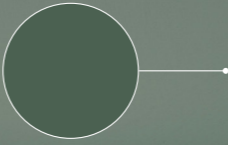
Suitable for use on:

- Wood (bare, varnished, painted)
- Laminate
- Ceramic
- Stone



GoodHome BALLINA

Wall & ceilings paint



GoodHome BALLINA

Furniture paint



Furniture paint

GoodHome furniture paint is perfect for modernising or upcycling old, unloved furniture or personalising something new.

Suitable for use on:

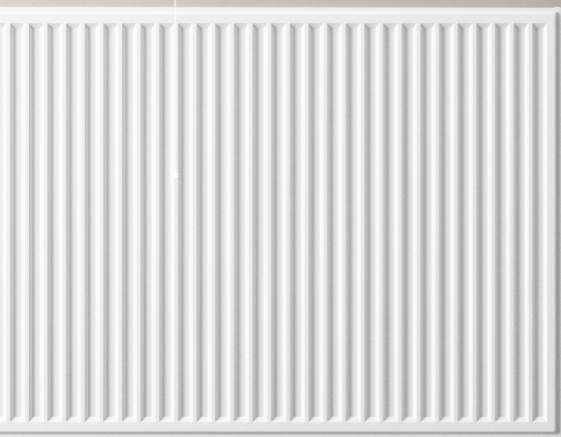
- Wood (bare, varnished, painted)
- Melamine
- Metal





GoodHome PURE BRILLIANT WHITE

Radiator & appliance paint



Radiator & appliance paint

GoodHome radiator & appliance paint is heat resistant, colour change resistant and easy to clean.

Suitable for use on:

- Metal
- Plastic





GoodHome DELAWARE

Wall tile & panelling paint

Wall tile & panelling paint

GoodHome wall tile & panelling paint is water resistant, hard-wearing and easy to clean.

Suitable for use on:

- Wood (bare, varnished, painted)
- Plastic
- Ceramic
- Stone





GoodHome HAMPTONS

Cupboard & cabinet paint

Cupboard & cabinet paint

GoodHome cupboard & cabinet paint is stain resistant, scratch resistant and easy to clean.

Suitable for use on:

- Wood (bare, varnished, painted)
- Melamine
- Metal
- Glass

