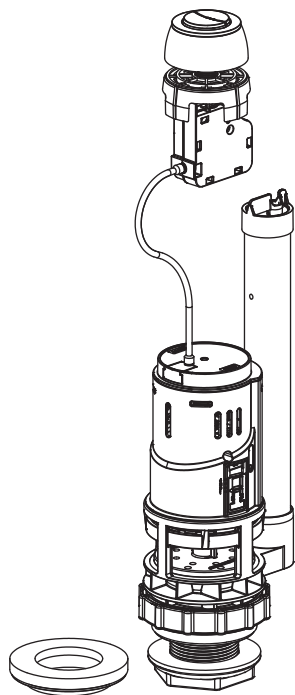


## EN Push Button Dual Flush Valve

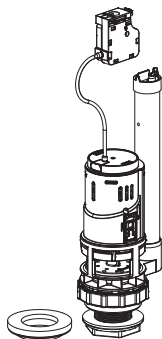


**EN IMPORTANT** - These instructions are for your safety. Please read through them thoroughly prior to handling the product and retain them for future reference.

**V11223\_5059340756424\_MAND1\_2223**

**5059340756424  
5059340756639**

EN Parts



01. x1



02. x1



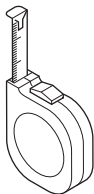
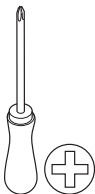
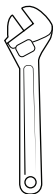
03. x1



04. x2

EN You will need

x1



EN Contents

EN	
Safety	3
Guarantee	5
Assembly	6
Care & maintenance	10



### EN

#### Before you start

- Ensure that this product is suitable for the installation you have and that all component listed are provided before starting the installation.
- Don't rush. Read the instructions first and familiarise yourself with the sequence before you begin, as some aspects of this installation may differ from other products on the market.
- Ensure water supply to the cistern is isolated before beginning works and drain as much water from your cistern to avoid water damage to your property.
- Failure to follow these instructions may result in personal injury, damage to your property, damage to the product and lose of guarantee.

#### Safety

- Make sure that water supply to your cistern has been isolated correctly and that the system is drained as much as possible to avoid any water damage to your property.
- Do not use sealing compounds when installing this product as damage over time may occur to the plastic components causing leaks.
- Do not over-tighten components as damage over time may occur.
- Do not add any Chemicals (e.g. Disinfectant Tablets/Bleaches etc) into the cistern water.
- The product, its components and packaging are not toys and should be kept out of the reach of children.
- If you are a DIYer and have limited experience with plumbed water systems, it is always good to contact a professional for guidance.

#### Removal of existing valve

If this is a new installation and you have no existing valves in your cistern, move straight onto step 1 of the installation.

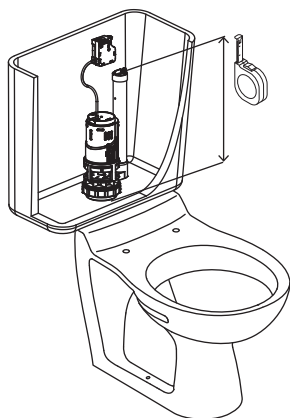
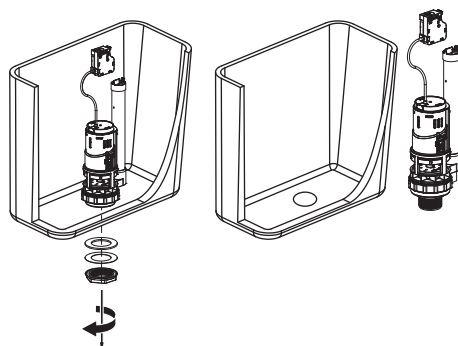
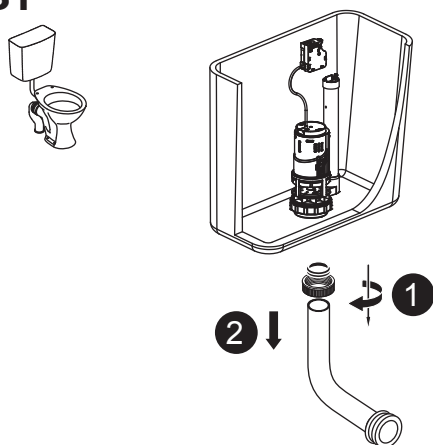
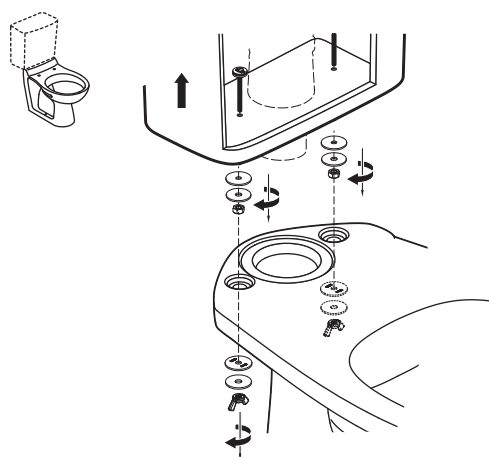
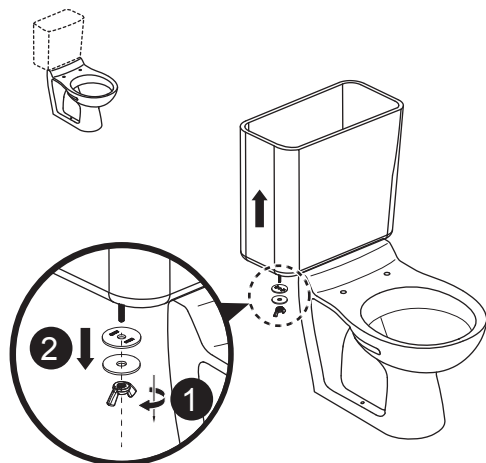
If you have a flush valve already installed, please follow the below guide to help with the removal. Please note that these steps are for common installations. If you have difficulty following or the steps do not cover your specific installation, you may wish to contact a plumber for further guidance.

- Begin by isolating the water supply to the cistern.
- Drain the water from the cistern by flushing the toilet.
- Remove the lid of the cistern along with any buttons that may be connected to this.
- Remove all excess water from the cistern with a sponge.
- To make the new flush valve easier to set up, measure the height of the current overflow pipe before removing it from your cistern. See image A for reference. Use this value Xmm in Installation Step 1.
- Next Remove the water supply connection from the fill valve shank.

**NOTE:** Have a bucket to hand to catch any water that may come from the cistern during the above steps.

Depending on the type of installation, the cistern could be connected to the pan via a flush pipe or with the cistern connected directly to the toilet pan. Follow the steps B1 or B2 depending on the installation.

- With the cisterns now drained and disconnected from the pan, remove the old flush valve and dispose of it correctly. See image C for reference.
- Clean all debris from the inside of the cistern including any existing seals/washers.
- We also supply new cistern screws and doughnut seal with the kit. Check these are suitable for your installation before disposing of the existing ones. Image D for reference on removing cistern screws for closed coupling toilets.

**A****C****B1****D****B2**

## Guarantee

We take special care to select high quality materials and use manufacturing techniques that allow us to create products incorporating design and durability. This product has a manufacturer's guarantee of 10 years against manufacturing defects, from the date of purchase (if bought in store) or date of delivery (if bought online), at no additional cost for normal (non-professional or commercial) household use.

To make a claim under this guarantee, you must present your proof of purchase (such as a sales receipt, purchase invoice or other evidence admissible under applicable law), please keep your proof of purchase in a safe place. For this guarantee to apply, the product you purchased must be new, it will not apply to second hand or display products. Unless stated otherwise by applicable law, any replacement product issued under this guarantee will only be guaranteed until expiry of the original period guarantee period.

This guarantee covers product failures and malfunctions provided the product was used for the purpose for which it is intended and subject to installation, cleaning, care and maintenance in accordance with the information contained in these terms and conditions, in the user manual and standard practice, provided that standard practice does not conflict with the user manual.

This guarantee does not cover defects and damage caused by normal wear and tear or damage that could be the result of improper use, faulty installation or assembly, neglect, accident, misuse, or modification of the product. Unless stated otherwise by applicable law, this guarantee will not cover, in any case, ancillary costs (shipping, movement, costs of uninstalling and reinstalling, labour etc), or direct and indirect damage.

The guarantee excludes diaphragms and seals.

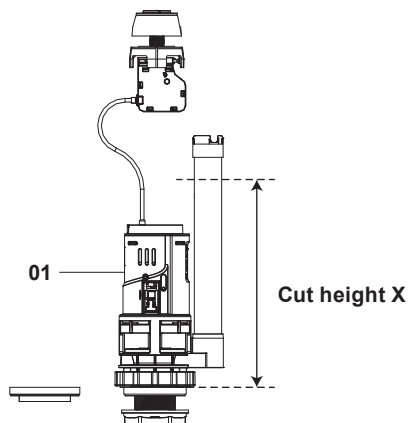
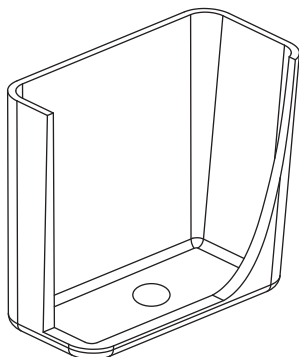
If the product is defective, we will, within a reasonable time, replace or refund.

Rights under this guarantee are enforceable in the country in which you purchased this product. Guarantee related queries should be addressed to the store you purchased this product from.

The guarantee is in addition to and does not affect your statutory rights.

**IMPORTANT - RETAIN  
THIS INFORMATION  
FOR FUTURE  
REFERENCE:  
READ CAREFULLY**

# 01



It is important to make sure the overflow is cut to the correct height before installing. If installed without cutting to the correct height, the valve will need to be removed.

If you had a valve already installed, this step is quite easy. Using the measurement from Step A of the "Removal of existing valve" section, measure from the bottom surface of the flush valve (as shown above) and mark the measurement on the new overflow.

If there is no flush valve installed, the correct height can also be calculated by using the intended water level of the cistern.

Normally, the cistern will have a marking on the internal back surface that denotes a 6L water level, simply measure the height from the internal bottom surface to the 6L level and add between 25 to 32mm to that height. This will also give you the "Cut height X".

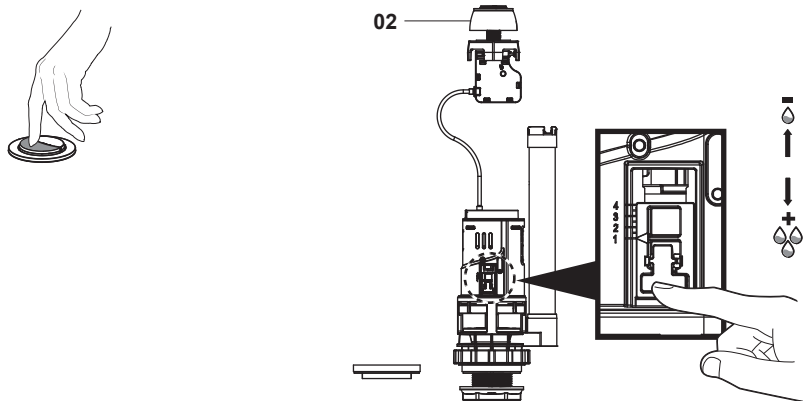
Use either option to measure and cut the overflow height correctly. Use a saw to cut the pipe squarely, and sand any burrs. Retain the component on the top of the overflow and attached this back to the newly cut end.

Before installing the flush valve, we recommend that the installer adjusts the full and half flush settings to where they are felt to be most economical. These can be adjusted after installation also if needed.

## 02A

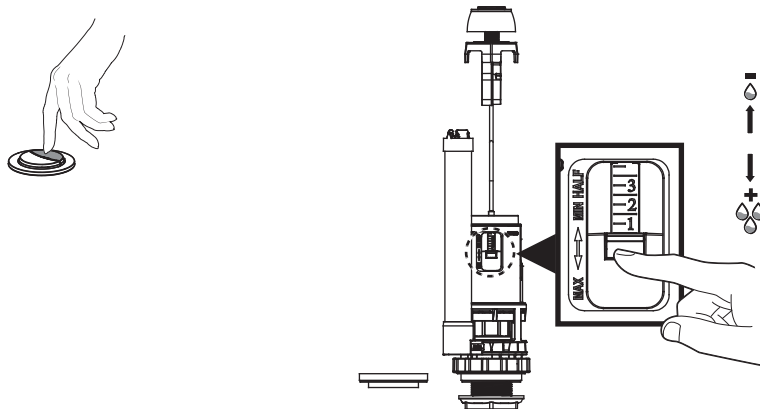


02. x1



- The larger button section is used to provide a larger flush volume. This can be adjusted as shown in section A.
- Make sure the section indicated is depressed to allow the slider to be adjusted.
- Lifting the slider up will reduce the full flush volume and moving the slider down will increase the full flush volume.

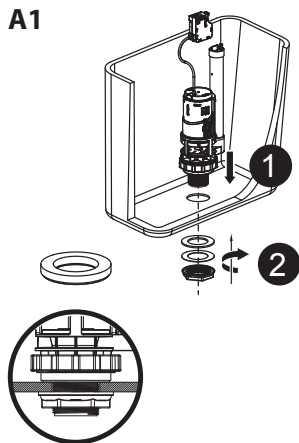
## 02B



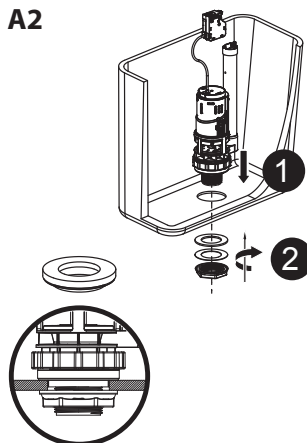
- The smaller button section is used to provide a half flush volume. This can be adjusted as shown in section B.
- Make sure the section indicated is depressed to allow the slider to be adjusted.
- Lifting the slider up will reduce the half flush volume and moving the slider down will increase the half flush volume.

# 03

A1



A2



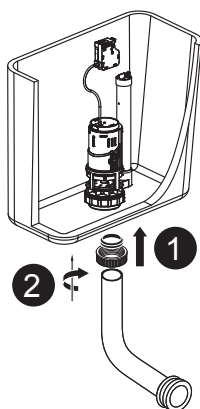
The flush valve is supplied with the option to fit a 1 1/2" cistern outlet [A1] or 2" cistern outlet [A2].

Depending on the cistern outlet size, fit the corresponding seal to the flush valve. Install the flush valve to the cistern and secure in place with the washers and backing nut provided.

Remember not to over tighten the nut, as this can cause damage to the valve or cistern.

Follow steps 04A or 04B depending on the arrangement for connecting the cistern to the pan.

# 04A



- Fit your cistern back to the wall and secure in position. Remember to insert the flush pipe a minimum of 50 mm to ensure a seal is made.
- Tighten any connections by hand to ensure no damage is caused to the product.
- Please note that the flush pipe must be of OD 38 mm as the outlet connection of the flush valve is 1 1/2"



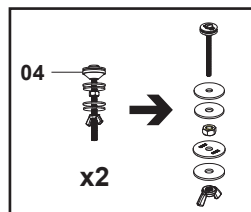
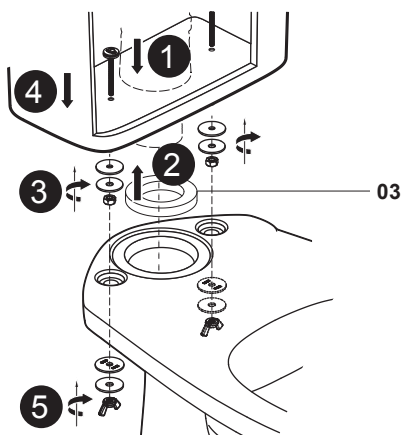
# 04B



03. x1



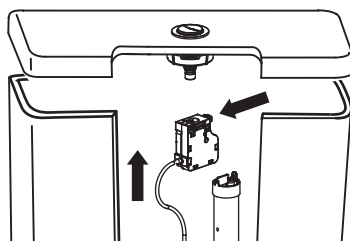
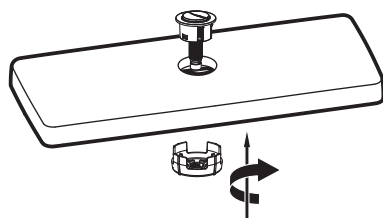
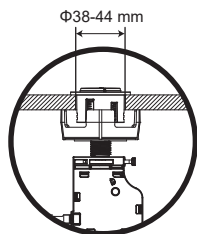
04. x2



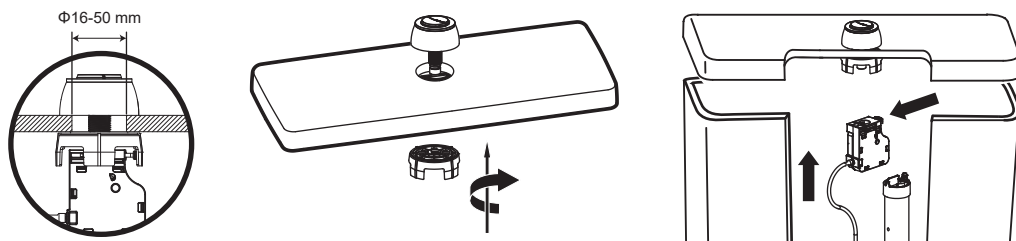
- Fit your cistern back to the toilet pan with the new bolts, nuts and washers provided. Remember to install the doughnut seal (03) between the cistern and the pan.
- Secure the cistern screws with hand force. Do not over tighten.

With the valve fitted, the installer can now fit the new button to the lid. Use the collar as shown in step A or B depending on the hole size you have in your cistern lid. Once fitted, connect the cable to the button, place the lid back on the cistern and turn on the water supply.

# 05A



# 05B

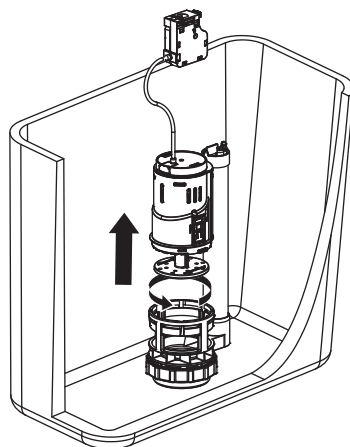
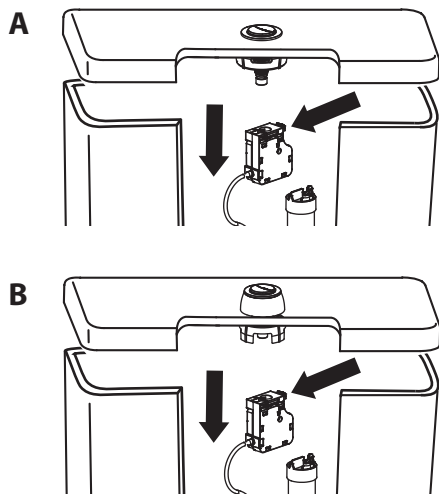


## EN Care & maintenance

To correctly maintain the flush valve we recommend cleaning the seal every 6 months, or sooner if you live in a hard water area.

Follow the detailed instruction below on how to access the flush valve seal for cleaning.

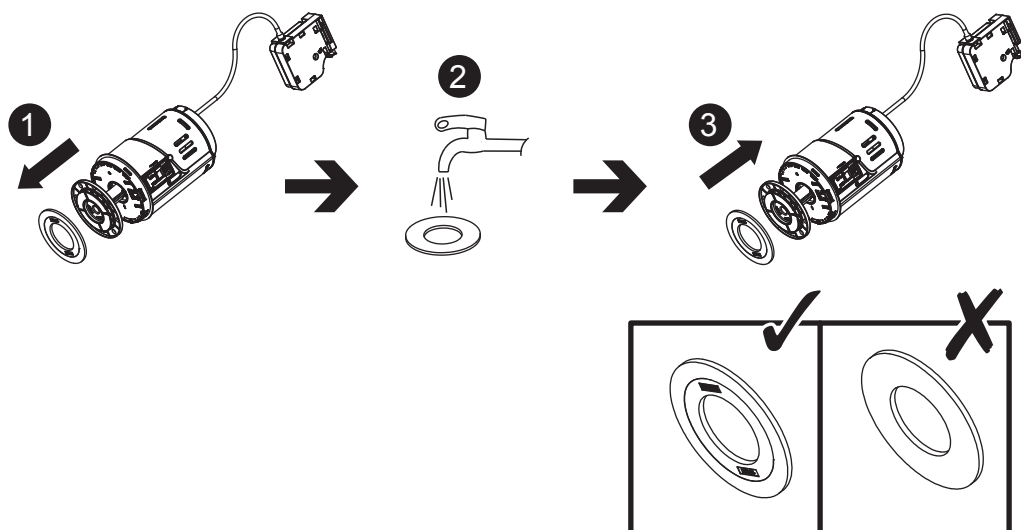
## 01



Isolate the water first so not to waste water. Lift the cistern lid and remove the cable from the button depending on your arrangement A or B.

Remove the valve by way of the bayonet connection for easy access to the flush valve.

# 02



Remove the seal carefully and wash under water to remove debris and scale.

Replace the seal making sure the seal is in the correct orientation.

Follow the instructions in reverse to reinstate the flush valve to working conditions

## Manufacturer :

### UK Manufacturer:

Kingfisher International Products Limited,  
1 Paddington Square, London, W2 1GG,  
United Kingdom

## EU Manufacturer:

Kingfisher International Products B.V.,  
Rapenburgerstraat 175E,  
1011 VM Amsterdam,  
The Netherlands

**EN** [www.diy.com](http://www.diy.com)  
[www.screwfix.com](http://www.screwfix.com)  
[www.screwfix.ie](http://www.screwfix.ie)

**To view instruction manuals online,  
visit [www.kingfisher.com/products](http://www.kingfisher.com/products)**