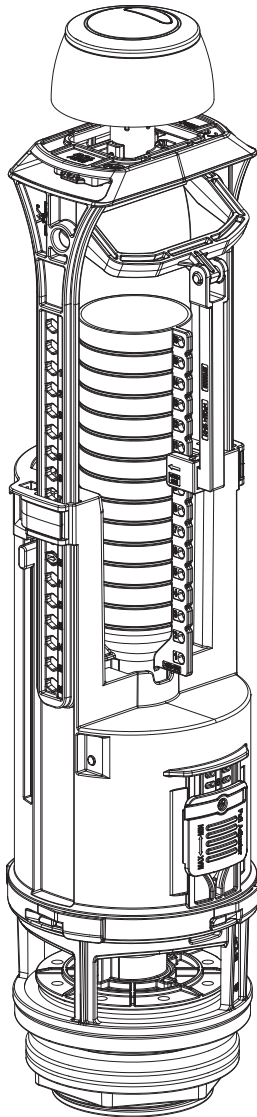


EN Dual Flush Valve Rod type

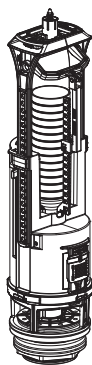


EN IMPORTANT - These instructions are for your safety. Please read through them thoroughly prior to handling the product and retain them for future reference.

V11223_5059340756790_MAND1_2223

5059340756790
5059340756479

EN Parts



01. x1



02. x1



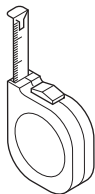
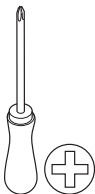
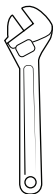
03. x1



04. x2

EN You will need

x1



EN Contents

EN	
Safety	3
Guarantee	5
Assembly	6
Care & maintenance	10



EN

Before you start

- Ensure that this product is suitable for the installation you have and that all component listed are provided before starting the installation.
- Don't rush. Read the instructions first and familiarise yourself with the sequence before you begin, as some aspects of this installation may differ from other products on the market.
- Ensure water supply to the cistern is isolated before beginning works and drain as much water from your cistern to avoid water damage to your property.
- Failure to follow these instructions may result in personal injury, damage to your property, damage to the product and lose of guarantee.

Safety

- Make sure that water supply to your cistern has been isolated correctly and that the system is drained as much as possible to avoid any water damage to your property.
- Do not use sealing compounds when installing this product as damage over time may occur to the plastic components causing leaks.
- Do not over-tighten components as damage over time may occur.
- Do not add any Chemicals (e.g. Disinfectant Tablets/Bleaches etc) into the cistern water.
- The product, its components and packaging are not toys and should be kept out of the reach of children.
- If you are a DIYer and have limited experience with plumbed water systems, it is always good to contact a professional for guidance.

Removal of existing valve

If this is a new installation and you have no existing valves in your cistern, move straight onto step 1 of the installation.

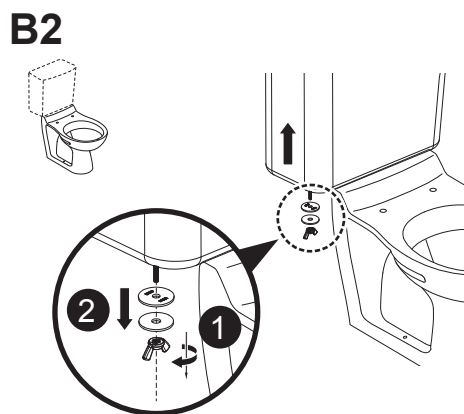
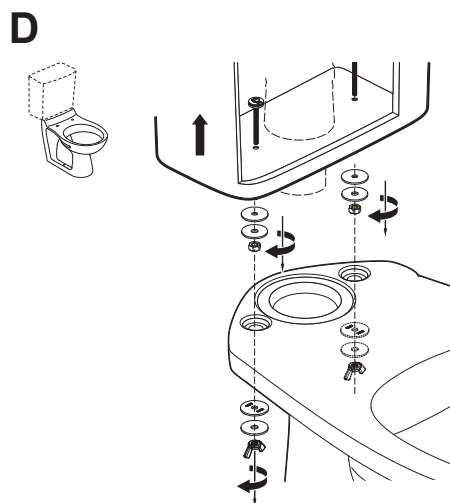
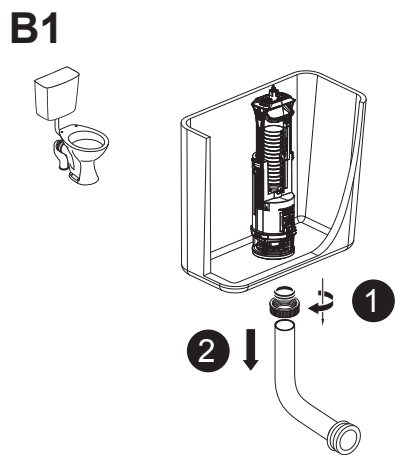
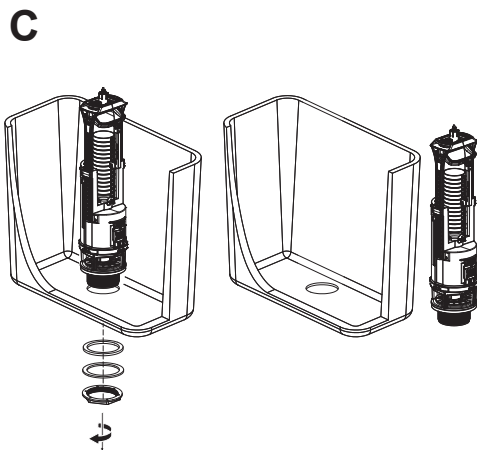
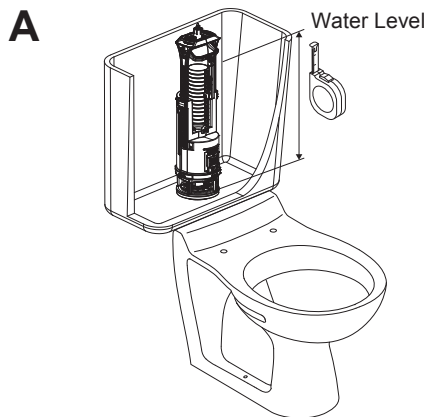
If you have a flush valve already installed, please follow the below guide to help with the removal. Please note that these steps are for common installations. If you have difficulty following or the steps do not cover your specific installation, you may wish to contact a plumber for further guidance.

- Begin by isolating the water supply to the cistern.
- Remove the lid of the cistern along with any buttons that may be connected to this.
- Measure the height of water within the cistern and make a note (as shown in step A).
- Drain the water from the cistern by flushing the toilet.
- Remove all excess water from the cistern with a sponge.
- Next Remove the water supply connection from the fill valve shank.

NOTE: Have a bucket to hand to catch any water that may come from the cistern during the above steps.

Depending on the type of installation, the cistern could be connected to the pan via a flush pipe or with the cistern connected directly to the toilet pan. Follow the steps B1 or B2 depending on the installation.

- With the cisterns now drained and disconnected from the pan, remove the old flush valve and dispose of it correctly. See image C for reference.
- Clean all debris from the inside of the cistern including any existing seals/washers.
- We also supply new cistern screws and doughnut seal with the kit. Check these are suitable for your installation before disposing of the existing ones. Image D for reference on removing cistern screws for closed coupling toilets.



Guarantee

We take special care to select high quality materials and use manufacturing techniques that allow us to create products incorporating design and durability. This product has a manufacturer's guarantee of 10 years against manufacturing defects, from the date of purchase (if bought in store) or date of delivery (if bought online), at no additional cost for normal (non-professional or commercial) household use.

To make a claim under this guarantee, you must present your proof of purchase (such as a sales receipt, purchase invoice or other evidence admissible under applicable law), please keep your proof of purchase in a safe place. For this guarantee to apply, the product you purchased must be new, it will not apply to second hand or display products. Unless stated otherwise by applicable law, any replacement product issued under this guarantee will only be guaranteed until expiry of the original period guarantee period.

This guarantee covers product failures and malfunctions provided the product was used for the purpose for which it is intended and subject to installation, cleaning, care and maintenance in accordance with the information contained in these terms and conditions, in the user manual and standard practice, provided that standard practice does not conflict with the user manual.

This guarantee does not cover defects and damage caused by normal wear and tear or damage that could be the result of improper use, faulty installation or assembly, neglect, accident, misuse, or modification of the product. Unless stated otherwise by applicable law, this guarantee will not cover, in any case, ancillary costs (shipping, movement, costs of uninstalling and reinstalling, labour etc), or direct and indirect damage.

The guarantee excludes diaphragms and seals.

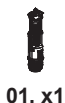
If the product is defective, we will, within a reasonable time, replace or refund.

Rights under this guarantee are enforceable in the country in which you purchased this product. Guarantee related queries should be addressed to the store you purchased this product from.

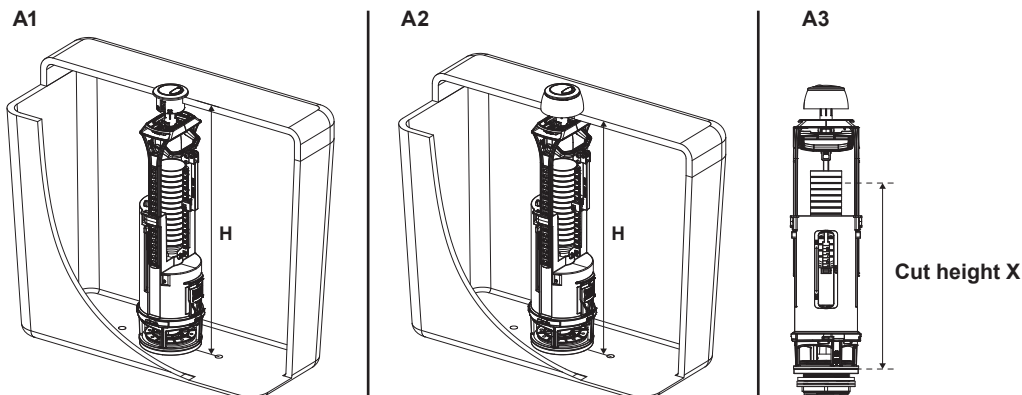
The guarantee is in addition to and does not affect your statutory rights.

**IMPORTANT - RETAIN
THIS INFORMATION
FOR FUTURE
REFERENCE:
READ CAREFULLY**

01



01. x1



To set the bridge to the correct height review both A1 and A2 layouts first and understand the table of measurements provided on page 7.

Installation A1 is achieved when the button can be fitted into the cistern lid and the installation height in the table is different for this arrangement.

Installation A2 is achieved when the button can not fit inside the cistern lid and the collar is required. The installation height in the table is different for this arrangement.

Once the installation height has been measured and matched to the heights in the table for A1 or A2 arrangement, the corresponding values for the bridge scale, overflow tube scale and link lever scale can be noted.

Before setting the bridge and link lever scale, the installer may need to cut the overflow.

The scale provided is a range and may not be correct for the water level set in the cistern. A3 shows the correct height to cut. The cut height X is calculated by the water level height from your cistern [**measured in Removal of existing valve Step A**] plus, 32 mm. Measure the cut height X onto the overflow tube and mark the closets number that falls within the overflow tube scale (of the corresponding Installation height) provided on page 7.

If cut height X measures to a number outside of the scale (above or below the MIN and MAX numbers provided), the fill valve water level will need to be adjusted to bring this in-line with the overflow tube scale and ensure correct function. This can be done once the valve has been installed and the water supply has been turned on.

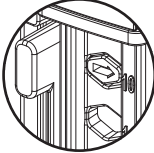
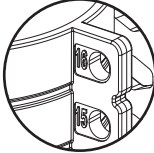
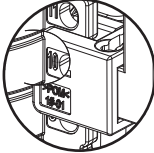
Follow the manufacturers installation manual for information on how to adjust your fill valve water level.

Follow all actions within Step 02 and 03 for reference on how to correctly cut the overflow and fully set up the flush valve.

If the overflow does not need to be cut, follow Step 02 part 1 and 2 and Step 03 part 2 and 3 only.

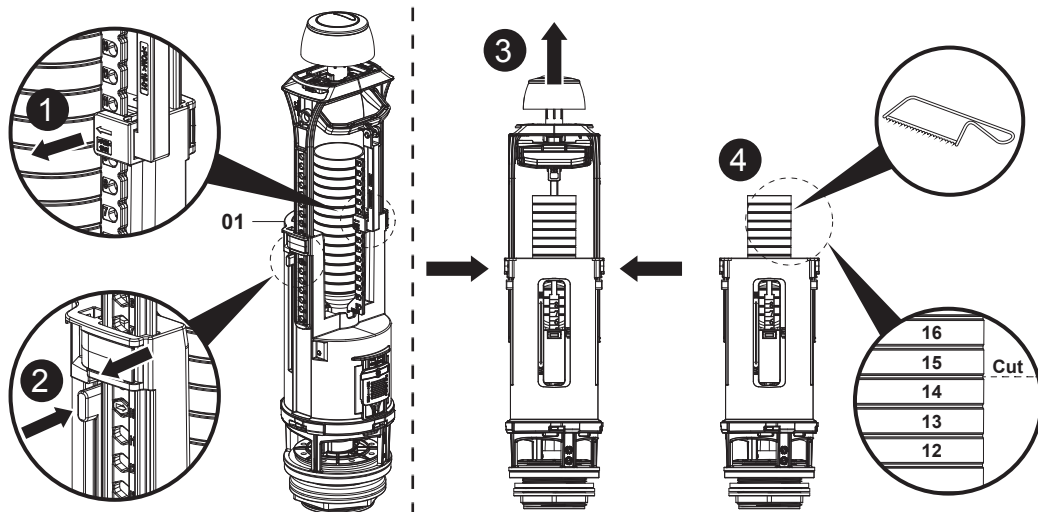
IMPORTANT: The overflow tube has ridges above and below the scale number. when cutting the overflow to the number taken from the table, be sure to cut the line above the scale number and not the line below.

NOTE: The overflow cutting heights are a range to ensure the product functions correctly and may not be correct for the water level set in the cistern. The installer should always measure the water level first to ensure the overflow height is between 25 to 32mm above the water level and cut to the closest number within the scale.

Installation height		Scale of bridge	Scale of overflow tube	Scale of link lever
A1	A2			
H (mm)				
419-429	395-405	16	16	16
411-421	387-397	15	MIN:15 MAX:16	15
403-413	379-389	14	MIN:14 MAX:16	14
395-405	371-381	13	MIN:13 MAX:16	13
387-397	363-373	12	MIN:12 MAX:16	12
379-389	355-365	11	MIN:11 MAX:16	11
371-381	347-357	10	MIN:10 MAX:16	10
363-373	339-349	9	MIN:9 MAX:15	9
355-365	331-341	8	MIN:8 MAX:14	8
—	—	—	—	—
307-317	283-293	2	MIN:2 MAX:8	2
299-309	275-285	1	MIN:1 MAX:7	1

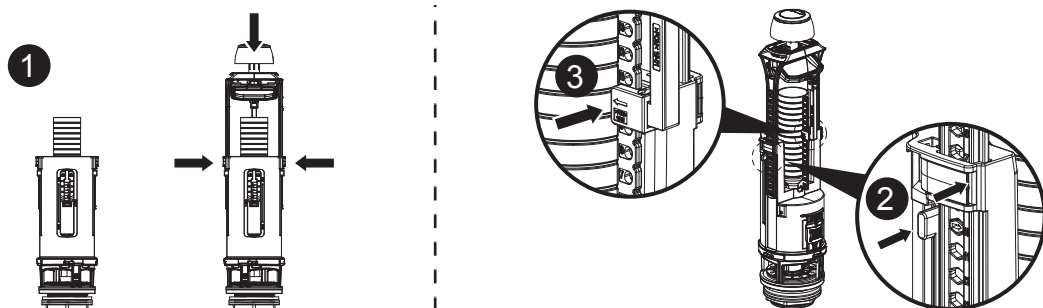
02

01. x1



1. First unclip the link lever and remove the lever from the overflow tube.
2. Then unclip the bridge locking clips on both sides of the valve, a flathead screwdriver may be needed. Once unclipped, press and hold the tags on both side of the bridge scale to allow for the bridge assembly to be moved.
3. Lift the bridge away from the valve to gain easy access for cutting the overflow
4. Cut the overflow above the number specified in the table provided. Example provided cutting at number 14.

03



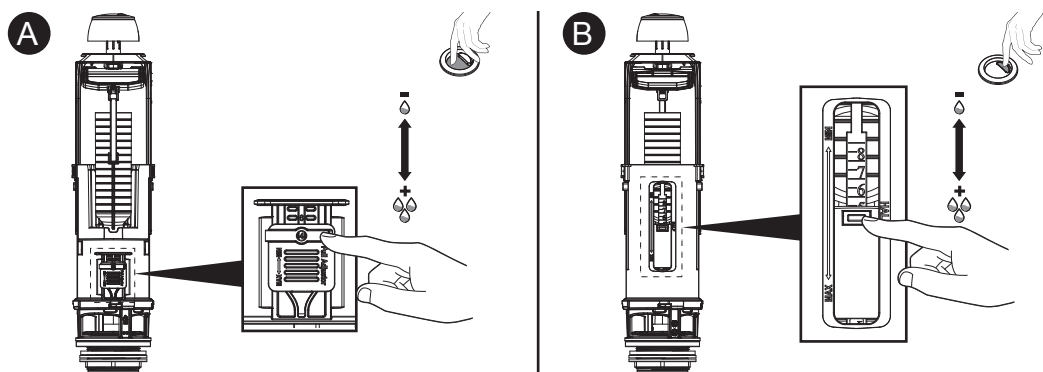
1. Depress the tags both side of the bridge scale and fit back the bridge assembly.
2. With the tags still depressed, match up the small arrow on the flush valve with the numbers on the bridge assembly according to the bridge scale number that aligns with the installation height measured.

Then release the tabs and secure the locking clip in placed for both sides.

IMPORTANT: Make sure that both sides of the valve are set at the same number before locking them in place.

3. Next match up the small arrow on the link lever with the numbers on the overflow tube according to the link lever scale number that aligns with the installation height measured.

04



Before installing the flush valve, we recommend that the installer adjusts the full and half flush settings to where they are felt to be most economical. These can be adjusted after installation also if needed.

The larger button section is used to provide a larger flush volume. This can be adjusted as shown in section A.

- Make sure to open the clip indicated before adjusting, and clipping back in place after adjusting.
- Lifting the slider up will reduce the full flush volume and moving the slider down will increase the full flush volume.

The smaller button section is used to provide a half flush volume. This can be adjusted as shown in section B.

- Make sure the section indicated is depressed to allow the slider to be adjusted.
- Lifting the slider up will reduce the half flush volume and moving the slider down will increase the half flush volume.

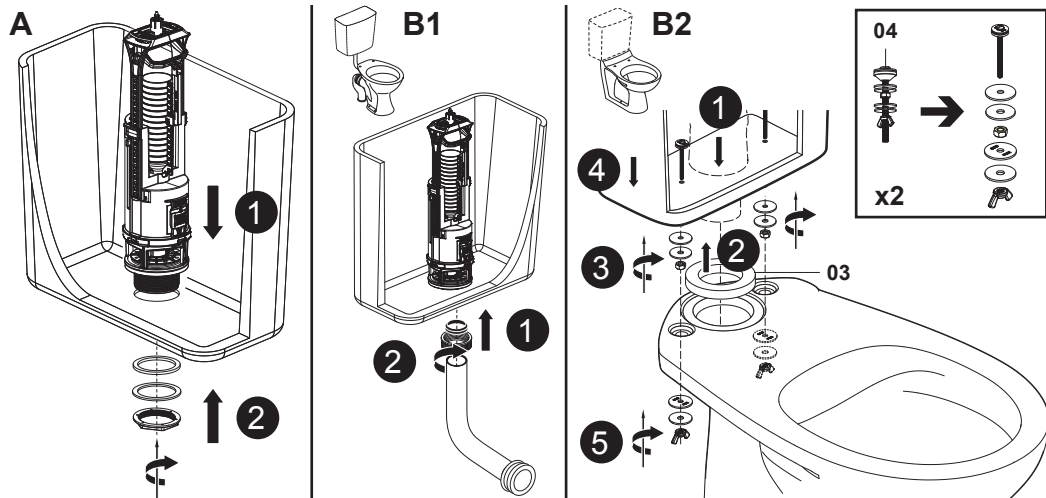
05



03. x1

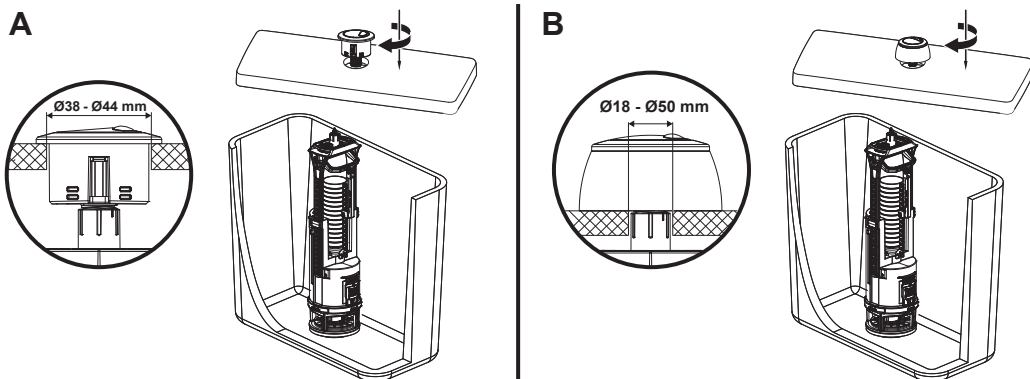


04. x2



- A** Fit the flush valve to the cistern as shown in the image. Make sure the washers are placed on the outside of the cistern as shown. The thicker rubber washer will come pre-fitted to the flush valve. If not, make sure this is in place before installing the valve to the cistern.
Re-install the cistern in arrangement B1 or B2 following the illustrations provided.
- B1** Fit your cistern back to the wall and secure in position. Remember to insert the flush pipe a minimum of 50 mm to ensure a seal is made.
Tighten any connections by hand to ensure no damage is caused to the product.
- B2** Fit your cistern back to the toilet pan with the new bolts, nuts and washers provided. Remember to install the doughnut seal (03) between the cistern and the pan.
Secure the cistern screws with hand force. Do not over tighten.

06



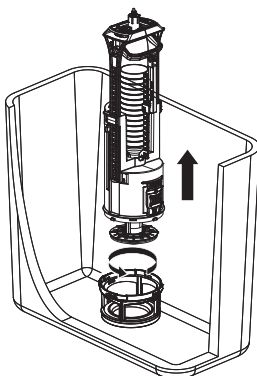
With the valves fitted, the installer can now fit the new button to the lid. Use the collar as shown above depending on the hole size you have in your cistern lid. Place the lid back on the cistern first. Fit the button into the lid hole and rotate in a clock-wise direction to secure it to the flush valve.

EN Care & maintenance

To correctly maintain the flush valve we recommend cleaning the seal every 6 months, or sooner if you live in a hard water area.

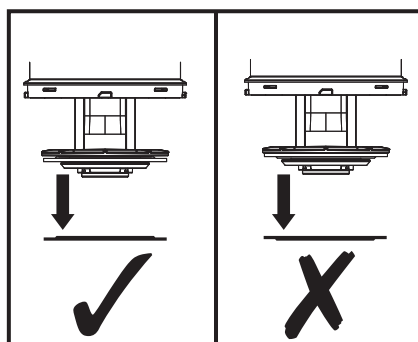
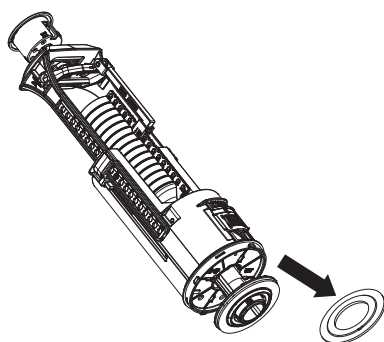
Follow the detailed instruction below on how to access the flush valve seal for cleaning.

01



- Isolate the water first so not to waste water. Rotate the button in an anti-clockwise direction to remove it from the cistern lid.
- Remove the cistern lid and the valve by way of the bayonet connection as shown.

02



- Remove the seal carefully and wash under water to remove debris and scale.
- Replace the seal making sure the seal is in the correct orientation.
- Follow the instructions in reverse to reinstate the flush valve to working conditions.

Manufacturer:

UK Manufacturer:

Kingfisher International Products Limited,
1 Paddington Square, London, W2 1GG,
United Kingdom

EU Manufacturer:

Kingfisher International Products B.V.,
Rapenburgerstraat 175E,
1011 VM Amsterdam,
The Netherlands

EN www.diy.com

www.screwfix.com

www.screwfix.ie

**To view instruction manuals online,
visit www.kingfisher.com/products**