

# HOMELUX

## HeatWave

UNDERTILE HEATING

### LCD Thermostat Instructions

Box Contains:

- 1x LCD Thermostat
- 2x Fixings Screws
- 1x Instructions
- 1x 3m Sensor Cable
- Warranty Information

OEP Co UK Ltd  
The Maltsters  
Wetmore Road  
Burton upon Trent  
DE14 1LS

Tel: +44 (0) 1823 245 430  
homelux.co.uk

PRCI SAS - Groupe OEP  
Avenue du Moulin De La Jasse  
BP 303  
4750 Villeneuve Les Mauguellone  
France

UK  
CA  
CE

**BEFORE YOU START...THOROUGHLY READ THE INSTRUCTION MANUAL IN HEAT MAT BOX**

#### INSTALLATION ADVICE

##### ONLY TO BE USED WITH HOMELUX HEATWAVE MAT

- All thermostat installation should be carried out by a fully qualified electrician
- To avoid electrical shock and to prevent damage to the thermostat, disconnect the power supply before beginning work

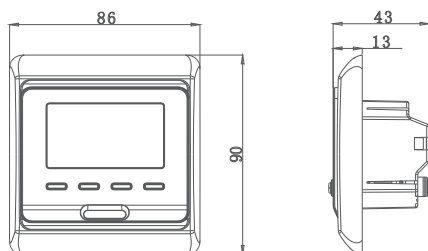
**IMPORTANT: DO NOT SWITCH ON THE SYSTEM BEFORE THE SUBSTRATE (eg CONCRETE) and FLOOR COVERING (eg TILE ADHESIVE) ARE COMPLETELY DRY TO AVOID CRACKING.**

- Electrical wiring regulations prohibit thermostats from being installed in bathrooms; if using the system in a bathroom, install the thermostat on an internal wall outside the bathroom as close to matting power supply cables as possible.
- Before tiling, turn on the Heatwave system and run for approximately 10 mins to ensure that the wire heats up

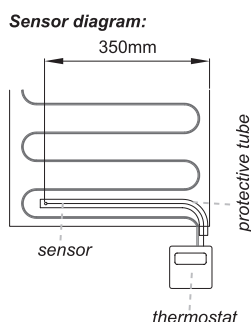
#### INSTALLATION GUIDE

- Choose a location about 1.5 metres above the floor with good air circulation for the thermostat
- The thermostat is mounted flush on the wall, so sink a back box of min 30mm depth into the wall prior to installation.
- Please note: A Residual Current Device (RCD) must be used with this system. (Purchased separately).

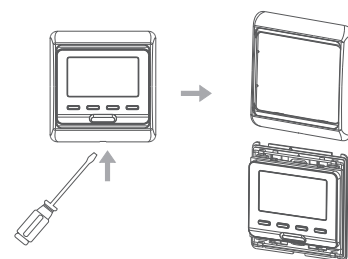
Dimension:mm



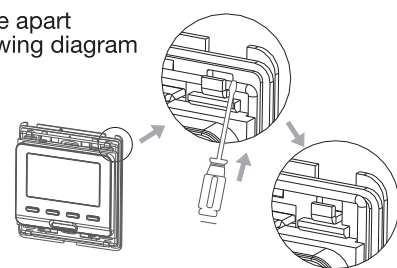
- STEP 1** Install the sensor under the mat, between two heating wires and 350mm into the heated area but not directly over the heating pipes beneath the floor. A small channel may be needed in the floor to accommodate the tube (in the heat mat box) which protects the sensor.



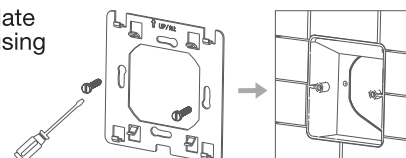
- STEP 2** Release the front cover by inserting the screwdriver into the bottom crack



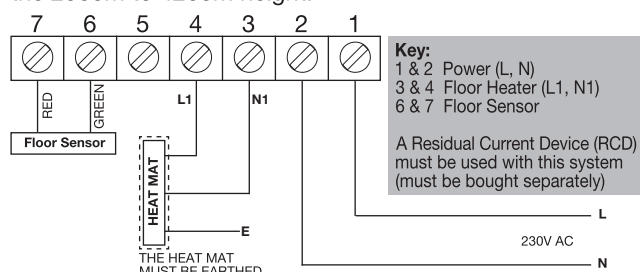
- STEP 3** Take the backing plate apart according to the following diagram



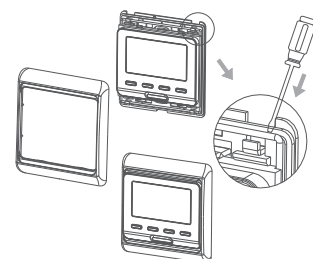
- STEP 4** Mount the backing plate into the wall socket using a screwdriver.



- STEP 5** Connect the thermostat. Ensure all wiring is undertaken by a qualified electrician. Attention: The thermostat which connects to the electrical heating device applies to full load (3200W) heating watt cable in 2500 height above sea level and the rating power of the external load should be less than or equal to the 80% rated power thermostat when in the 2500m to 4200m height.



After all wires have been connected, mount the thermostat on the backing plate and remount the cover and frame.



#### TECHNICAL SPECIFICATION

Model: HHW LTSC  
Supply: 230v AC  $\pm 10\%$  50Hz  
Max Load: 3600W  
Accuracy:  $\pm 1.0^\circ\text{C}$   
Setting Range:  $5-90^\circ$  (can adjust to  $35-90^\circ\text{C}$ )  
Limitation setting:  $5-60^\circ\text{C}$  (Factory Setting:  $35^\circ\text{C}$ )  
Switch differential:  $0.5-10^\circ\text{C}$  (Adjustable Factory Setting:  $1^\circ\text{C}$ )  
Dimensions: 86 x 90 x 13mm

Fits a back box (min 30mm depth)  
Protection: Class 2  
Protective housing: IP20  
Ambient temperature:  $5-50^\circ\text{C}$   
Housing material: Anti-flammable PC  
Load: Maximum Load 16 Amp  
Sensor type: NTC  
NOTE: The terminals are designed for 2.5mm 2 wire.

#### PRODUCT GUARANTEE

**2 YEAR WARRANTY – SEE INFORMATION IN BOX**

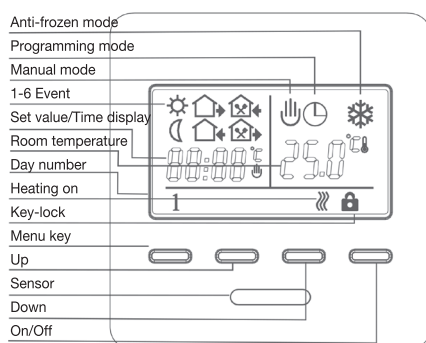
Please note:

The sensor should be tested before the tiles are installed. The sensor should give a reading of ohms depending on your room temperature. If the sensor gives no readings, then return to the place of purchase for a replacement.

## PROGRAMMING YOUR HEATWAVE LCD THERMOSTAT

### BEFORE PROGRAMMING, PLEASE ENSURE THAT YOU READ THROUGH ALL OF THESE SETTINGS CAREFULLY

#### Display Symbols:



#### Function:

- Manual mode
- Clock controlled programme mode
- Heating on
- Wake-up, event 1
- Leave (am), event 2
- Return (am), event 3
- Leave (pm), event 4
- Return (pm), event 5
- Sleep, event 6

### SET THE TIME AND DAY

- Turn the unit on using
- Press menu and up together for 5 seconds to enter clock set. You will then be able to change the minutes using the and arrow.
- Press to change the hour. You will then be able to change the minutes using the and arrow.
- Press again to select the correct day of the week. You will then be able to change the day using the and arrow. 1 = Monday, 7 = Sunday.
- Press again to return to the main menu

### INITIATE ADVANCE SETTINGS

Advanced settings must be configured before programming and after mounting the thermostat. These should only be completed by a qualified electrician after install.

- Hold down the and the key together when in Power Off mode.

Symbol	Setting	Action
26.3°C	Temperature calibration	Press  or  key to adjust present checked value, adjust scale: 9.9°C. Re-press  key to enter to next step
25 EN 10	Sensor mode	Press  or  key to choose sensor working mode IN: built-in, OUT: floor sensor ALL: both sensors, floor sensor is the limit sensor Re-press  key to enter to next step
31.2 35.0	Modify limitation mode	Press  or  key to modify the temperature Limit value limitation range: 5-60°C Re-press  key to enter next step
4d.F 10	Switch differential setting	Press  or  key to change switch differential Setting range: 0.5-10°C Re-press  key to enter to next step
5L.FP OFF	Start anti-frozen function in power off	Press  or  key to change the present ant-frozen function Re-press  key to enter to next step
6PRG 12345	Set day off mode	Press  or  key to choose day off 5/2 day mode, 6/1 day mode, 7 day mode Re-press  key to enter to next step
7T.E 00	Start ahead time of the adaptive function	Press  or  key to change the time of start ahead Start ahead time range: 0-30 minutes Default 0
8R.DR 00	The adaptive function	Press  or  key to choose this function "ON"/"OFF" 00: OFF, 01: ON Default 00
9H.F 35.0	Max. Temperature setting	Press  or  key to change the maximum value Range: 35-90°C Re-press  key to enter to next step
10PE 00	Open windows function	Press  or  key to choose this function "ON"/"OFF" 00: OFF, 01: ON Default 00
11FAC -	Reset to factory setting	Press  key for 5 seconds till showing - Reset to factory setting Switch off for saving setting

### AUTOMATIC AND MANUAL MODE

You can easily switch between the manual and the automatic/clock-controlled mode by pressing the button. Set a desired temperature by using the and buttons.

When in manual mode, you will see the manual control mode icon . The symbol will indicate that the heating is on and the desired temperature is above the ambient room temperature. To return to the automatic mode, press the button and the clock controlled mode icon will show.

### SETTING AN AUTOMATIC PROGRAMME

By default, your Heatwave thermostat is set to a 5/2 schedule, where you can set different timings and temperatures for days 1-5 (Monday-Friday) and days 6-7 (Saturday and Sunday). Please note the scheduled times and temperatures prior to programming.

#### 5 DAY SCHEDULE

1. Turn the unit on using
2. Press and hold down for 5 seconds to enter programming mode
3. The will appear which is the first setting of the day/Period 1.
4. You can then set the start time for Period 1 using the and buttons
5. Save your start time by pressing the button and now use the and buttons to set the desired temperature. Press to save.
6. Repeat steps 3-5 to set all six time periods.

#### WEEKEND

7. After completing the 5 day schedule, press the button for weekend heating
8. Use the and arrows to select the time to apply for both Saturday and Sunday
9. Save your start time by pressing the button and use the and arrow to set the desired temperature
10. Press to select Period 2, repeating steps 8 and 9
11. Finally press the button to save your 7 day programme schedule.

Press key for 5 seconds to start programming

Key	Key	Symbol	Time	Modify	Temp.	Modify
	Day 1-5	1	06:00	 	20°C	 
		2	08:00		15°C	
		3	11:30		15°C	
		4	12:30		15°C	
		5	17:00		22°C	
		6	22:00		15°C	
	Day 6-7	1	08:00	 	22°C	 
		2	23:00		15°C	

### CHANGING DEFAULT HEATING PROGRAMME

By default, the programming schedule is split to 5 days and weekend (5/2). You can also select all 7 days the same (7day) or 6 days and 1 separate day (6/1).

Follow instructions for **INITIATE ADVANCE SETTINGS**.

- Press button until option 6PRG is selected.
- Press the arrow until option 12345 is shown. Select this one for 5/2.
- Select 123456 for 6 days.
- Select 1234567 for 7 day.
- Select to save setting

### ERROR CODES

**E0:** This relates to a fault with the built-in temperature sensor, either through damage/short-circuit or disconnection. This usually requires a replacement thermostat to correct.

**E1:** This relates to a fault with the external floor sensor probe. Contact your electrician who can isolate the electricity supply and check the sensor is connected and working correctly.

**Screen Lock:** Press and hold the up and down arrows for 5 seconds when the appears on the screen. The symbol will disappear to show it's unlocked.