

INSTALLATION INSTRUCTIONS



Illuminated LED Mirror IP44
700 x 500 x 75mm

Product Codes:
SE30673C0 &
SE30773C0

IMPORTANT: Please read these instructions before commencing installation and retain for future reference.

Bathroom Lighting Zones:

0

Inside the bath or shower.
Must be SELV (12V Max) due to water submersion.
Minimum rating of IP67.

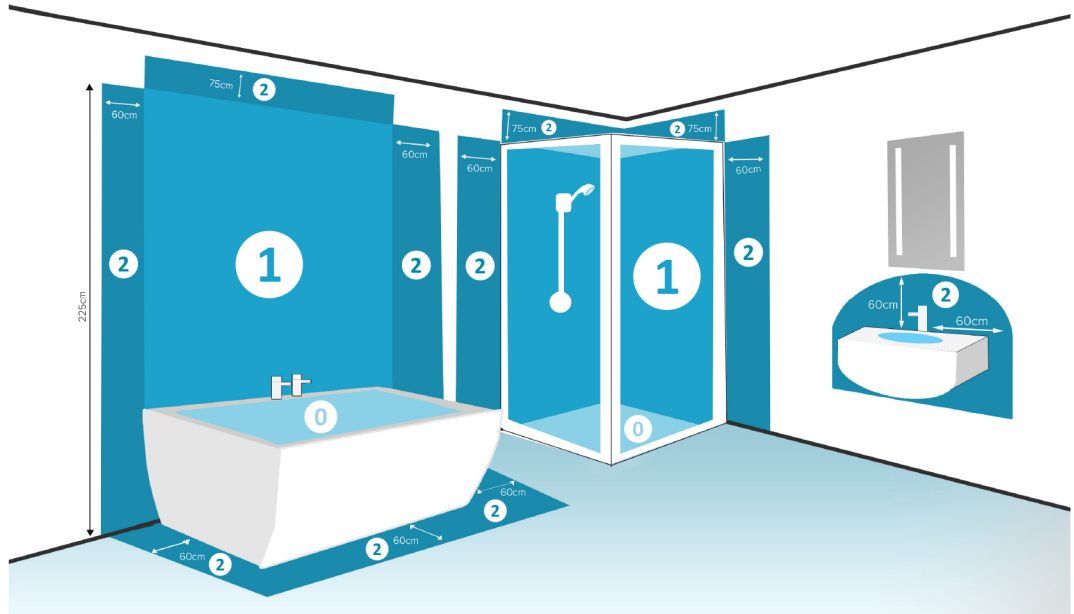
1

225cm above the bath or shower.
Minimum rating of IP44.

2

The area stretching to 60cm outside the bath or shower, and 60cm from the water outlet of the sink. An IP rating of at least IP44 is required.

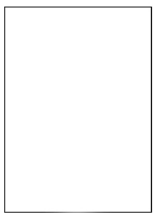
This mirror is IP44 rated and suitable for installation in zone 2 and the outside zones.



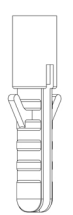
Outside Zones - Anywhere outside zones 0, 1 and 2, where water jets are not used for cleaning purposes, the general rules of BS7671 apply.

Components

Important Safety Information



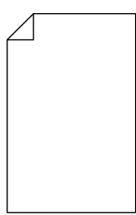
Illuminated LED Mirror



4 x Rawl Plugs



4 x Screws



1 x Instructions Manual

Please read these instructions carefully before attempting to install this product. It is advisable to keep these instructions in a safe place for future reference.

We recommend that you consult a qualified electrician. All electrical installation must be carried out in accordance with the current IEE wiring regulations (BS7671) and the latest relevant building regulations.

This product must not be modified, if any modifications are made, it may invalidate the warranty and may render the product unsafe.

The wattage of this mirror is 43W.

This product is for indoor use only.

Tools Required

Safety Instructions



Pencil



Screwdriver



Ø8mm Drill Bit



Power Drill

1. If in doubt, installation must be carried out by a qualified electrician.
2. Before commencing installation or maintenance, isolate the main electrical supply for the appropriate circuit at the fuse board.
3. This product is only suitable for connecting to a 240V 50Hz supply.
4. The mirror should be mounted onto a secure surface.

5. When installing, please take care to avoid water pipes, joints and electrical cables.
6. This product has a rating of IP44.
7. Do not exceed or stretch cables.

Waste Electrical & Electronic Equipment (WEEE)

The symbol on the product, or on the document accompanying the product, the crossed out wheellie bin symbol, indicates that this product may not be treated as household waste.

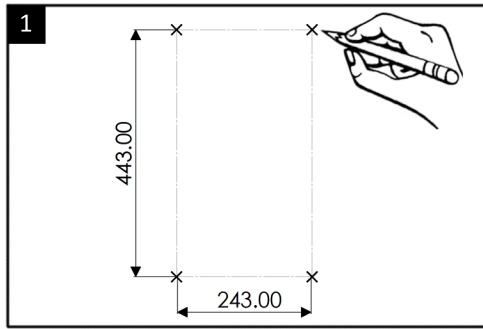
Instead it shall be handed over to the applicable collection point for the recycling of electrical and electronic waste.



RoHS Compliant ✓ **CE**

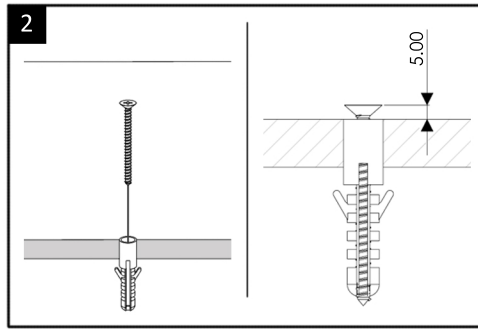
Illuminated LED Mirror IP44

Installation

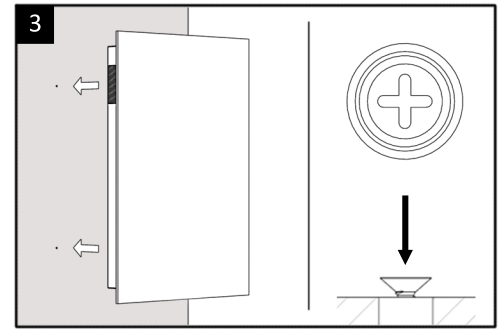


Carefully mark the desired position for the mirror using the dimensions shown above. Then proceed to drill the holes using the 8mm drill bit for the Rawl wall plugs and screws.

Note: Be careful to avoid any wiring or water pipes.



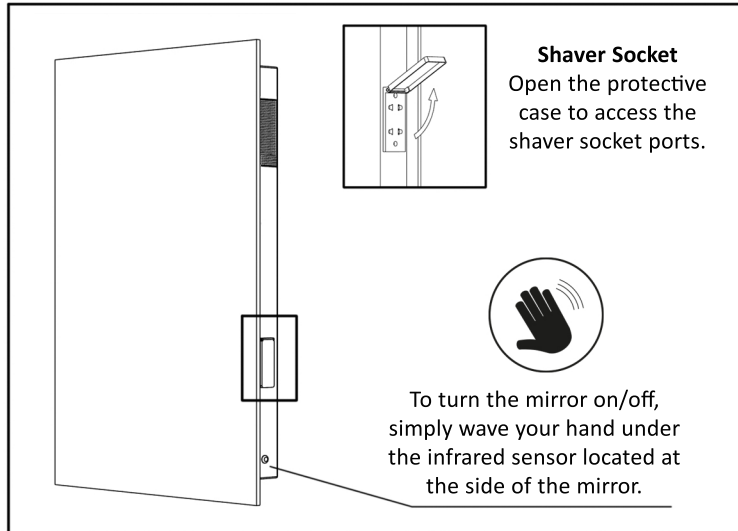
Insert the Rawl wall plugs and screws into the wall. Be sure to leave a gap of approximately 5mm between the wall and the screw head, so the screw is sticking out slightly.



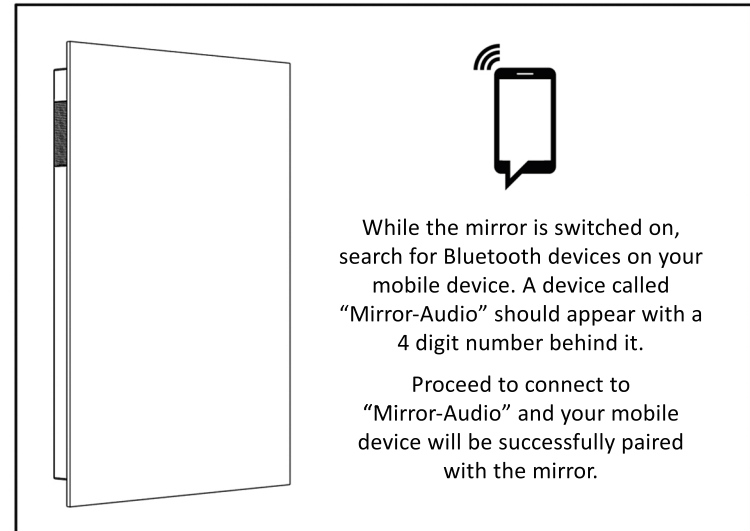
Connect the cable to the mains supply and proceed to attach the mirror to the wall by slotting the brackets onto the wall mounting screws.

Note: Ensure that the infrared sensor is located at the bottom of the mirror when mounting.

Operation



Bluetooth Audio



Maintenance & Care

- To keep the finish of this product, wipe over with soft cloth periodically.
- Do not use harsh chemical solvents, this may dis-colour or damage the finish.
- Do not over-tighten screws on the terminal block.