

Splashwall

Elegant Kitchen Splashbacks



2024/2025 Collection

Focused on the hottest new trends, Splashwall kitchen splashbacks are designed to help you achieve a stunning transformation in no time at all...

By using Splashwall you will be surprised at how quickly and easily you can update your kitchen.

We offer our splashbacks in a range of different materials that can be cut and fitted easily, without the need for grout.

Modern Alloy designs can be used across the entire wall space behind your hob, without compromising safety.

Our Decor range are for those wanting to make a style statement and our Composite range offers a modern metro tile look.



ACRYLIC STYLES - Page 4

The perfect modern splashback. Our acrylic range is the ideal alternative to glass, saving you both time and money.
Splashback Sizes: 2440mm x 600 x 4mm,



ALLOY STYLES - Page 8

Bring your dream kitchen to life with a beautifully designed Alloy splashback that carries a fire rated certification; meaning it can be used to cover the entire wall space behind your hob, without compromising safety.

Splashback Sizes: 2440 x 600 x 4mm, 2440 x 750 x 4mm
Hob Sizes: 600 x 800 x 4mm, 900 x 800 x 4mm



DECOR STYLES - Page 14

Splashbacks in our stunning Decor range are easy to fit, easy to clean and are all designed to represent the charm of natural materials.

Splashback Sizes: 2440 x 1220 x 10mm,
2440 x 600 x 10mm



COMPOSITE STYLES - Page 20

Our composite range of splashbacks are made from a super strong, completely waterproof, composite material with an embossed tile effect.

Splashback Sizes: 2440 x 1220 x 4mm,
2440 x 600 x 4mm

Material: 4mm engineered polymer
Splashback Sizes: 2440 x 1220mm,
2440 x 600mm
Sheet Thickness: 4mm
Splashback Style: Pyramid



A beautiful Acrylic patterned splashback is a fantastic modern alternative to glass.

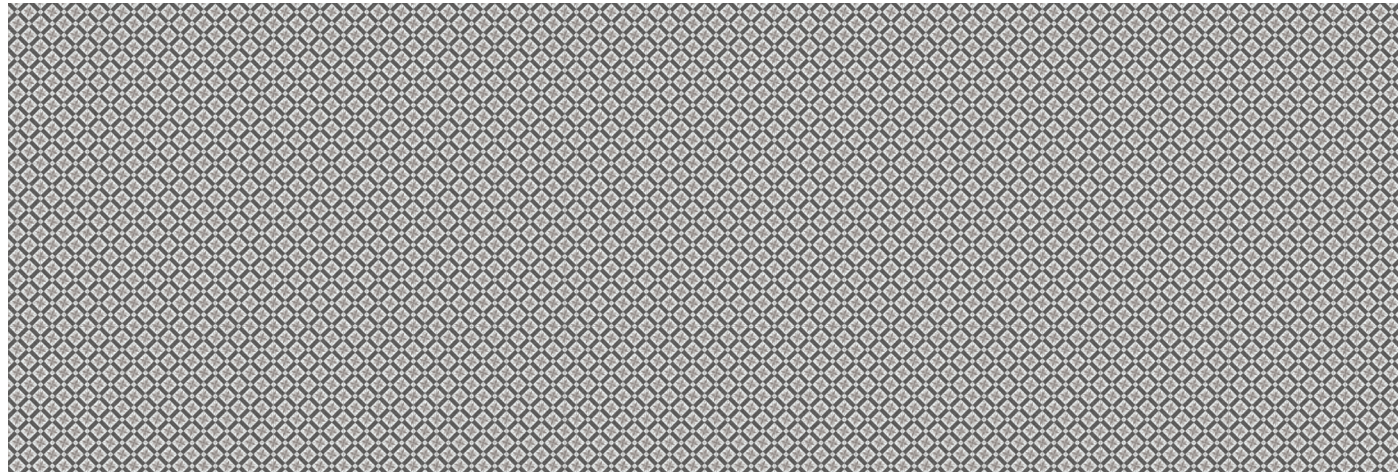
Our acrylic panels are a highly engineered polymer enhanced with colour. Twenty - five times stronger than glass, they can be fitted by using basic hand tools, so great for any professional or DIY enthusiast.

Acrylic Styles

ACRYLIC STYLES

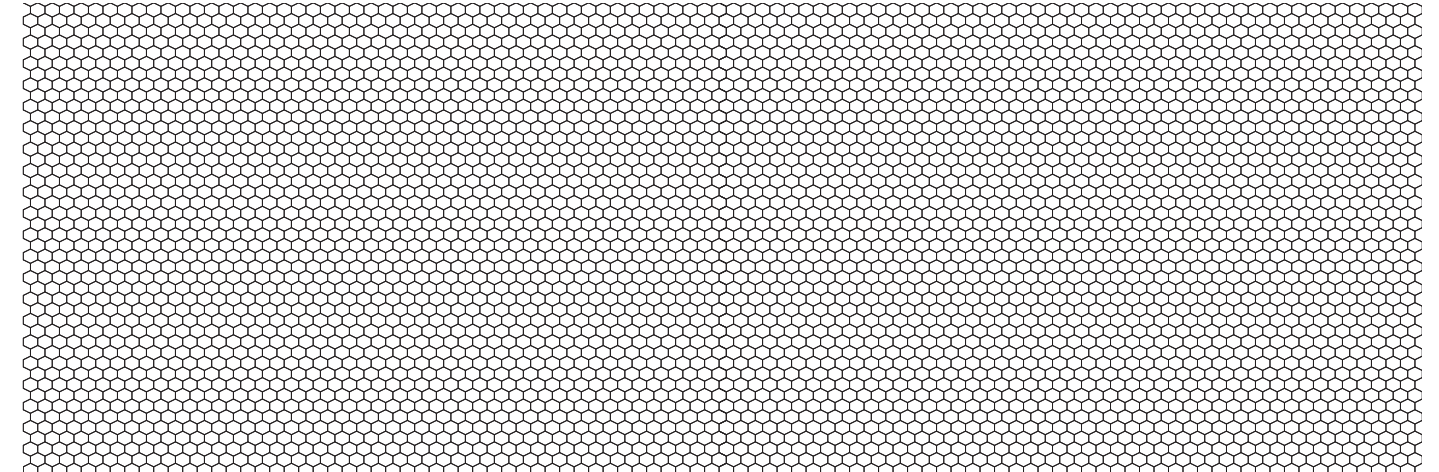
All colours are representative - we recommend you see a sample before ordering.

Splashwall



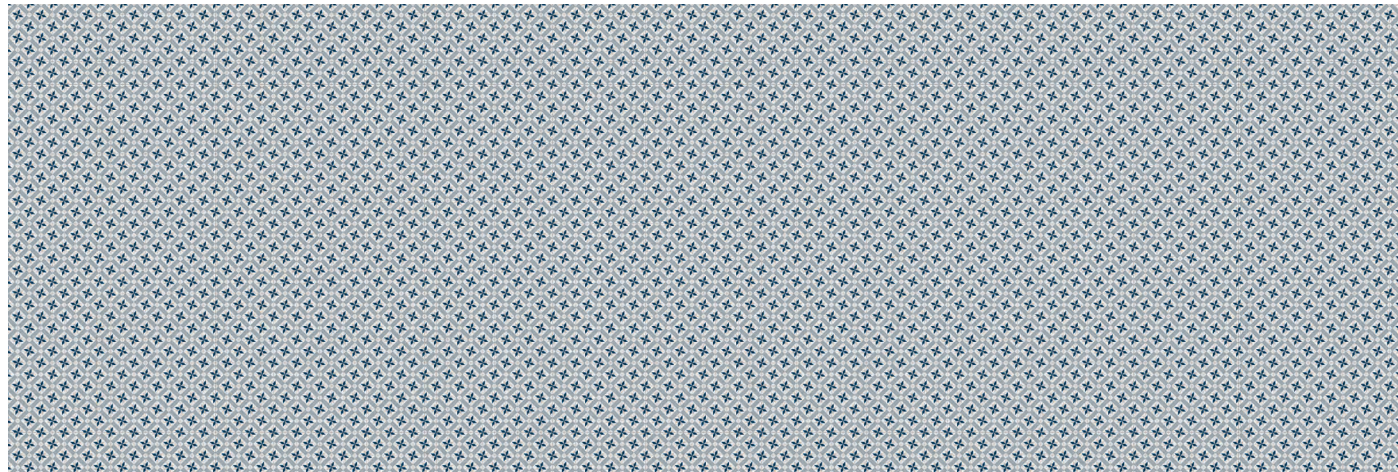
Italian Tiles | Gloss *

Sealant: Silver Grey



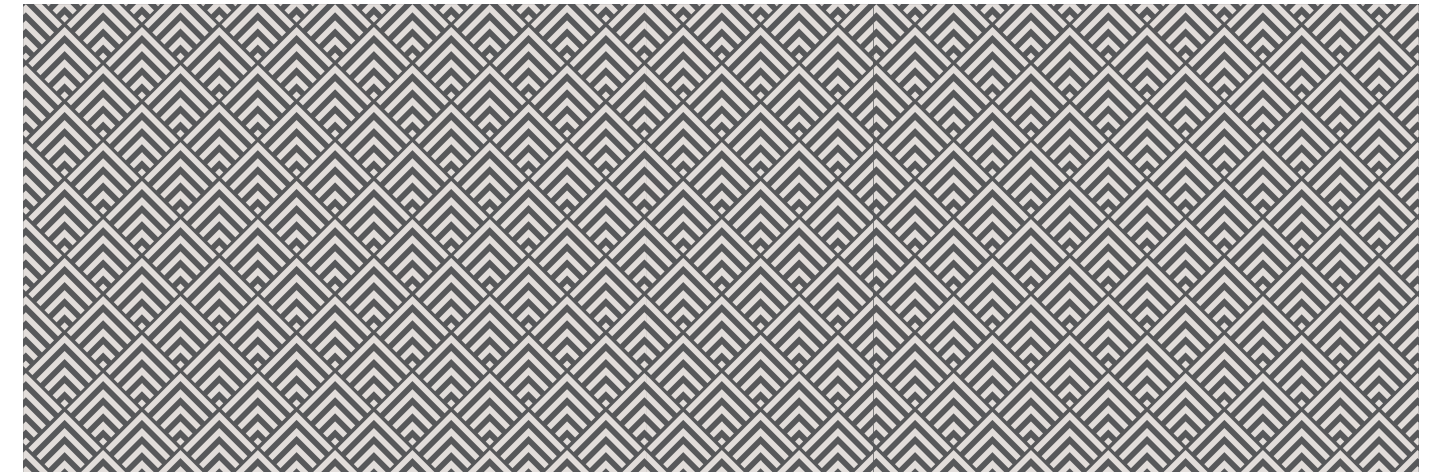
Mosaics | Gloss *

Sealant: Ivory



Spanish Tiles | Gloss *

Sealant: Silver Grey



Pyramids | Gloss *

Sealant: Ash Grey



Misty Woods | Gloss *

Sealant: Silver Grey

TECHNICAL DETAIL

PANELS	2440 x 600mm Gloss
Italian Tile	5060699096642
Misty Woods	5060699096659
Mosaics	5060699096666
Pyramids	5060699096673
Spanish Tile	5060699096635

Material: Patterned aluminium

Splashback Sizes:

2440 x 600mm

2440 x 750mm

Hob Sizes:

600 x 800mm

900 x 800mm

Sheet Thickness: 4mm

Splashback Style: Modern Chevron
Ebony

Bring your dream kitchen design to life with a beautifully patterned splashback that fills the entire wall space behind your hob, without compromising safety. With Alloy, say goodbye to tiles and hello to a high performance, statement splashback you can place wherever you want.

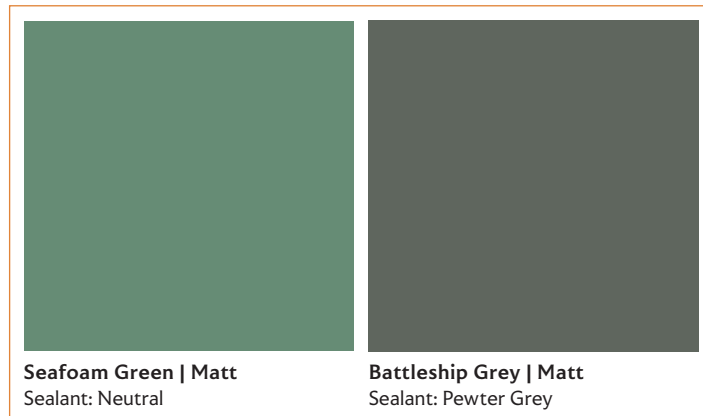
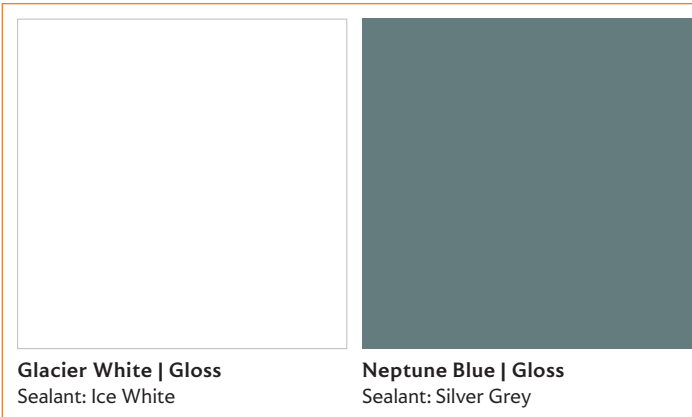
Our Alloy splashbacks are fire certified, meaning they can be used safely behind hobs, plus they're 100% waterproof, so can be used behind sinks too.



Alloy Styles

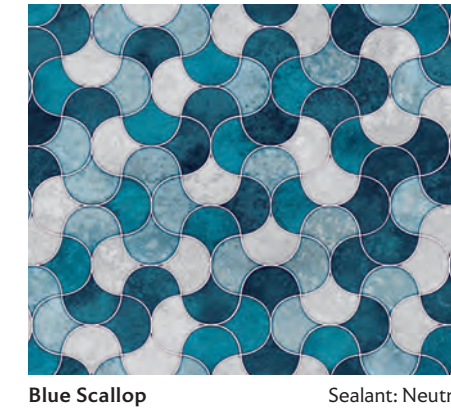
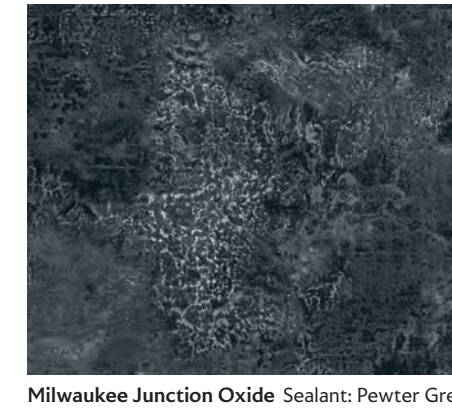
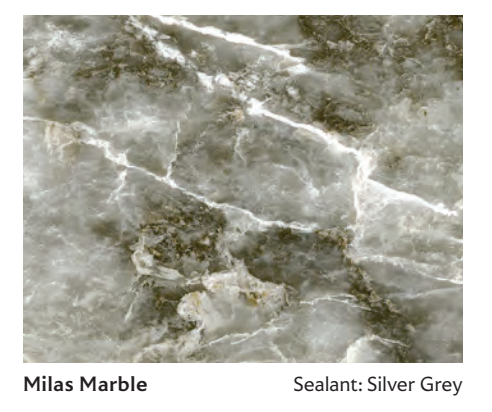
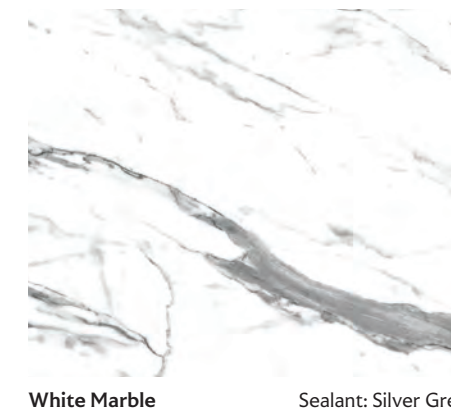
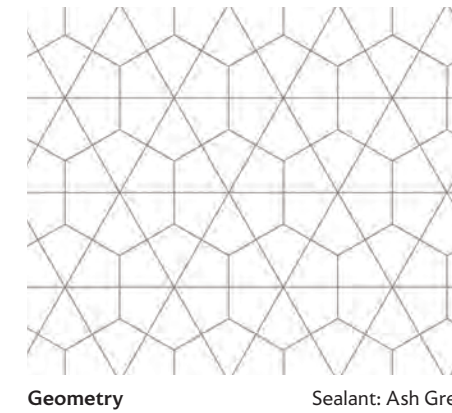
ALLOY STYLES

As outlined below, all Alloy Solid Colour Styles feature a double sided decor i.e. Glacier White features Neptune Blue to the reverse.



All colours are representative - we recommend you see a sample before ordering.

Splashwall



TECHNICAL DETAIL

PANELS	2440 x 600mm	2440 x 750mm	600 x 800mm	900 x 800mm
Battleship Grey / Seafoam Green	5055286014505	5055286014666	5055286014826	5055286014987
Brushed Copper / Brushed Carbon	5055286014543	5055286014703	5055286014864	5055286015021
Brushed Titanium / Brushed Steel	5055286014536	5055286014697	5055286014857	5055286015014
Deep Sea Blue / Smoked Rose	5055286014475	5055286014635	5055286014796	5055286014529
Glacier White / Neptune Blue	5055286014840	5055286014680	5055286015007	5055286014956
Malibu Grey / Storm Blue	5055286014482	5055286014642	5055286014802	5055286014963
Midnight Grey / Hadrian Green	5055286014512	5055286014673	5055286014833	5055286014994
Terra Grey / Seabreeze Green	5055286014499	5055286014659	5055286014819	5055286014970
Blue Scallop	5055286014451	5055286014611	5055286014772	5055286014932
Cider Barrel	5055286014406	5055286014567	5055286014727	5055286014888
Geometry	5060699097724	5060699097717	5060699097748	5060699097731
Herringbone Whitewash	5060699097809	5060699097793	5060699097823	5060699097816
Milas Marble	5055286014437	5055286014598	5055286014758	5055286014918
Misuo Marble Grey	5055286014413	5055286014574	5055286014734	5055286014895
Milwaukee Junction Oxide	5055286014444	5055286014604	5055286014765	5055286014925
Modern Chevron Ebony	5055286014468	5055286014628	5055286014789	5055286014949
Terrazzo Grey	5055286014420	5055286014581	5055286014741	5055286014901
White Crackle Tile	5060699098042	5060699098035	5060699098066	5060699098059
White Marble	5060699098080	5060699098073	5060699098103	5060699098097
Woven Oak	5055286014390	5055286014550	5055286014710	5055286014871

EDGE PROFILES	600mm	750mm	2440mm
Anthracite	5060699098110	5060699098127	5060699098134
Silver	5060699098141	5060699098158	5060699098165

EXTERNAL CORNER PROFILES	600mm	745mm
Anthracite	5060699098172	5060699098189
Silver	5060699098196	5060699098202

INTERNAL CORNER PROFILES	600mm	745mm
Anthracite	5060699098219	5060699098226
Silver	5060699098233	5060699098240

JOINTING PLATE	595mm	745mm
Anthracite	5060699098257	5060699098264
Silver	5060699098271	5060699098288

SEALANTS	
Ash Grey	5060699097205
Balsalt Grey	5060699097243
Chestnut	5060699097212
Ice White	5060699097267
Jet Black	5060699097236
Mushroom	5060699098295
Neutral	5060699097311
Pewter Grey	5055286003707
Silver Grey	5060699097281

ADHESIVE	
White	5060699097328

Alloy Splashbacks come in four sizes, but you're not limited by the size of the panel you buy - it's easy to cut your panels to the size and shape you need.

High Rise Splashback – The 750mm height of the high rise splashback allows you to fill the wall right up to hood height with design whilst being safe in the knowledge they are certified to be there. You don't need to interrupt the design with a different panel type to protect your home

Mid Rise Splashback – The Mid Rise splashback's 600mm height is ideal for use behind a sink, or filling the space behind a hob between worktop and upper cabinets.

For a focused area of design a hob panel is the perfect solution. Choose between two different sizes both with an 800mm height.



Standard Hob Splashback



Wide Hob Splashback



High Rise Splashback



Mid Rise Splashback



Material: MDF
Splashback Sizes: 2440 x 1220mm,
2440 x 600mm
Sheet Thickness: 10mm
Finish: Matt or gloss
Style Shown: Finestra Original

Decor Styles

Using Splashwall Decor designs it is easy to create an unforgettable, modern looking kitchen that's practical and low maintenance.

Each Decor style is designed to represent the charm of natural materials but with a much simpler and cost effect installation.

All our Splashwall Decor splashbacks are made using a modern, moisture resistant core, that come with a 15 year product guarantee (when fitted in line with our installation guide)..

DECOR STYLES



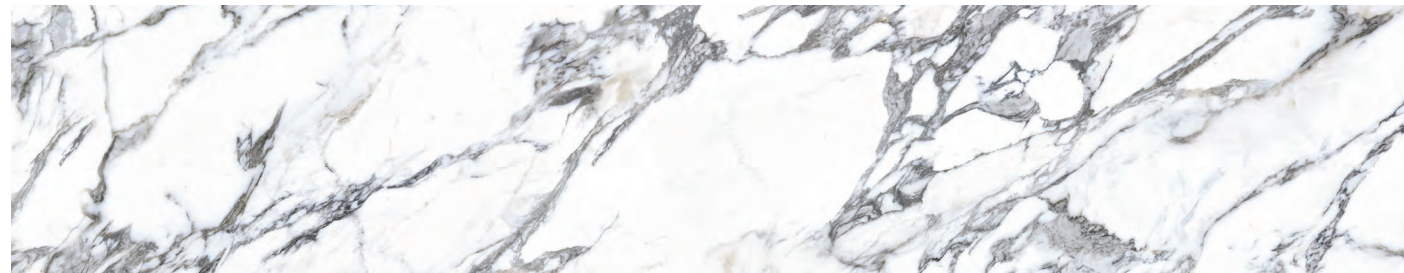
Mediterranean Kitchen

Sealant: Chestnut



Herringbone Tile

Sealant: Silver Grey



Greek Marble

Sealant: Ice White



Brushed Copper

Sealant: Clear

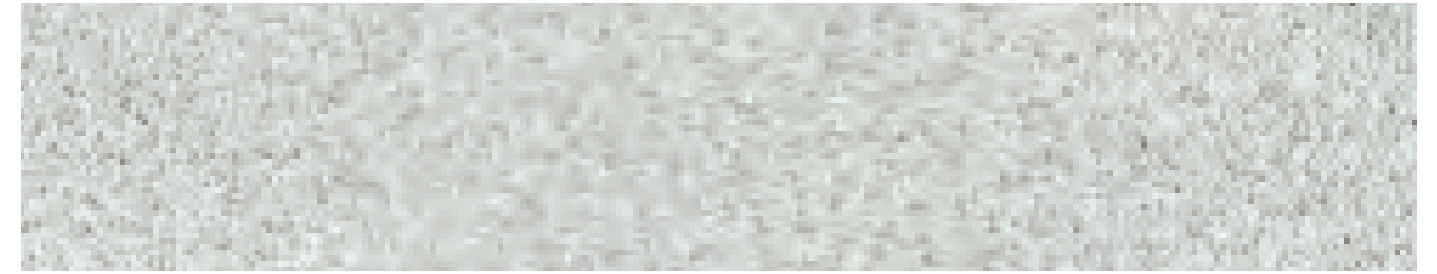


Brushed Aluminium

Sealant: Clear

All colours are representative - we recommend you see a sample before ordering.

Splashwall



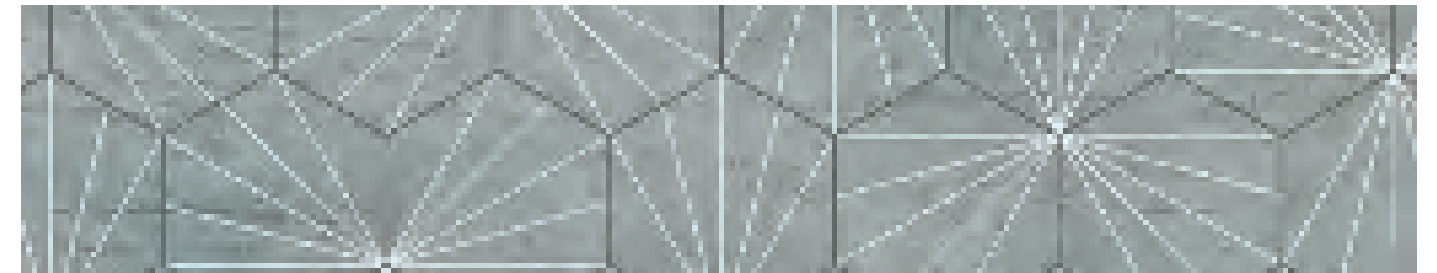
Coloured Speckle

Sealant: Ice White



Bergshire Oak

Sealant: Neutral



Brooklyn Tile

Sealant: Silver Grey



Finestra Original

Sealant: Ash Grey



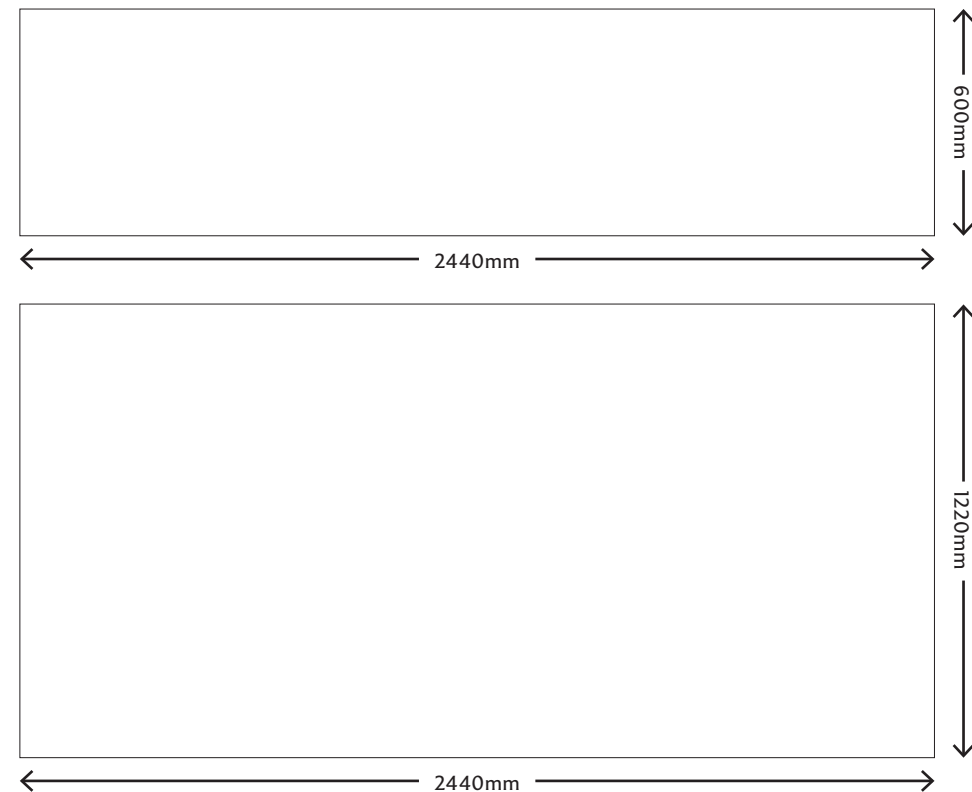
Frosted Window

Sealant: Clear

PANEL CODES	2440 x 600mm	2440 x 1220mm
Brushed Aluminium	5060699096772	5060699096963
Brushed Copper	5060699096765	5060699096956
Mediterranean Kitchen	5060699096734	5060699096925
Greek Marble	5060699096758	5060699096949
Herringbone Tile	5060699096703	5060699096895
Coloured Speckle	5055286015083	5055286015038
Bergshire Oak Whitewash	5055286015090	5055286015045
Brooklyn Tile	5055286015106	5055286015052
Finestra Original	5055286015113	5055286015069
Frosted Window	5055286015120	5055286015076

SEALANT CODES		ADHESIVE	
Ash Grey	5060699097205	White	5060699097304
Clear	5060699097311		
Chestnut	5060699097212		
Ice White	5060699097267		
Silver Grey	5060699097281		

Splashback Sheet Size



Cutting:

Measure your splashback and use a soft pencil on the surface. If you do not wish to mark the surface then put masking tape down first and mark on the tape. This will also help on darker colours to make sure the pencil line is visible. Mark the face if cutting with a handsaw or the back if using a power saw and always double check your measurements before cutting. Remember to allow for any edging to be added.

NOTE: Use appropriate safety equipment such as face mask and eye protection while performing any cutting. Ensure all pieces, including off cuts, are adequately supported.

When using a handsaw the decorative face should be uppermost, keeping the saw at a low angle to ensure the best cut. Ensure that your saw is sharp and well set and has 10/12 teeth per inch. When using an electric saw you should cut the splashback face down.

Cut-outs:

Shaped cut-outs can be formed by drilling 8mm diameter holes in the corners of the required shape and then cutting between using a fine wood jigsaw blade. It is important that the splashback is supported at all times. With all cut-outs a radius of at least 4mm must be left in the corners.

Edging:

Splashwall Decor Splashbacks are not edged. We suggest using splashwall trims to finish exposed edges.

Cleaning:

For general cleaning gently wipe the surface using either a damp cloth or sponge with a mild detergent or non-abrasive cleaner diluted in warm water. It is important to avoid using abrasive scouring powders, creams or polishes.

It is always advisable to wipe off any spillages immediately.

Whilst the surface will resist most household foodstuffs, including coffee and red wine, certain items such as shoe polish, dyes and nail varnish will stain.

Installing:

NOTE: The bottom edge of the splashback, where it meets the worktop should be sealed with Complete coloured sealant to avoid moisture ingress.

NOTE: For installations behind a hob please refer to the hob manufacturers guidelines for fitting suitability and requirements.

NOTE: The splashback should be adhered to the wall with Complete adhesive.

When fixing the splashback, apply Complete adhesive to the back of the splashback in vertical beads spaced 100mm apart. The area directly behind the hob should also have additional vertical beads spaced 20mm apart and at least 300mm high.

Press down to ensure the Complete adhesive is 'squeezed out' and wipe off any excess adhesive immediately, using white spirit.

You may need to push into place if the wall is running off square and hold in place with a combination of clamps and push sticks until the adhesive has set. Once the adhesive is set the installation is complete.

Material: Solid grade laminate
Splashback Sizes: 2440 x 1200mm,
2440 x 600mm
Sheet Thickness: 4mm
Finish: Gloss
Style Shown: White

Our composite range of splashbacks are made from a super strong, waterproof composite, that has a realistic tile embossed effect; giving the look and feel of traditional metro tiles, but minus the hassle of grout! Shown here in our modern bright White Tile decor.

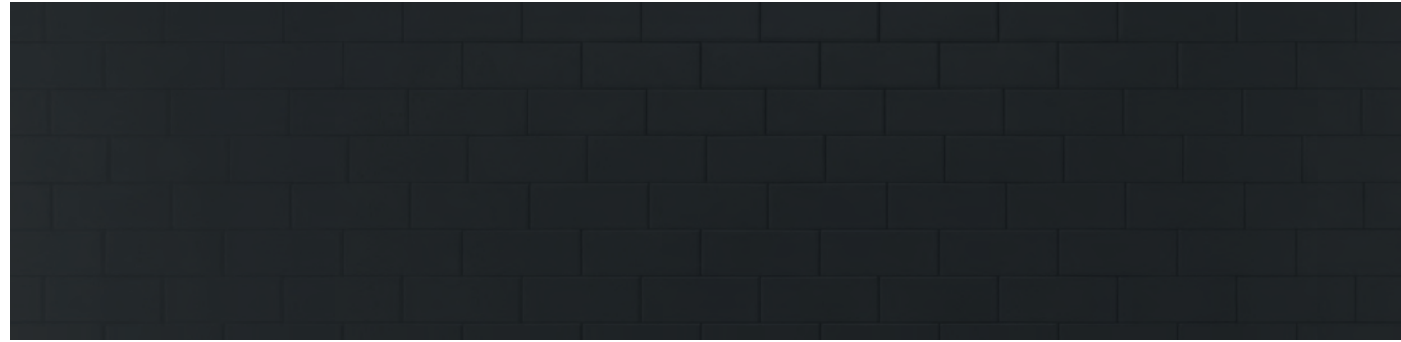
Larger Runs

For large kitchens, with splashbacks longer than 2440mm required, our panels can easily be butted next to each other.



Composite Styles

COMPOSITE STYLES



Black | Gloss

Sealant: Jet Black



Coffee | Gloss

Sealant: Fudge



Cream | Gloss

Sealant: Ice White



White | Gloss

Sealant: Ice White

TECHNICAL DETAIL

Splashwall

PANEL CODES	2440 x 600mm	2440 x 1220mm
Black	5060699099070	5060699099063
Coffee	5060699096802	5060699096994
Cream	5060699096796	5060699096987
White	5060699096789	5060699096970

SEALANT CODES

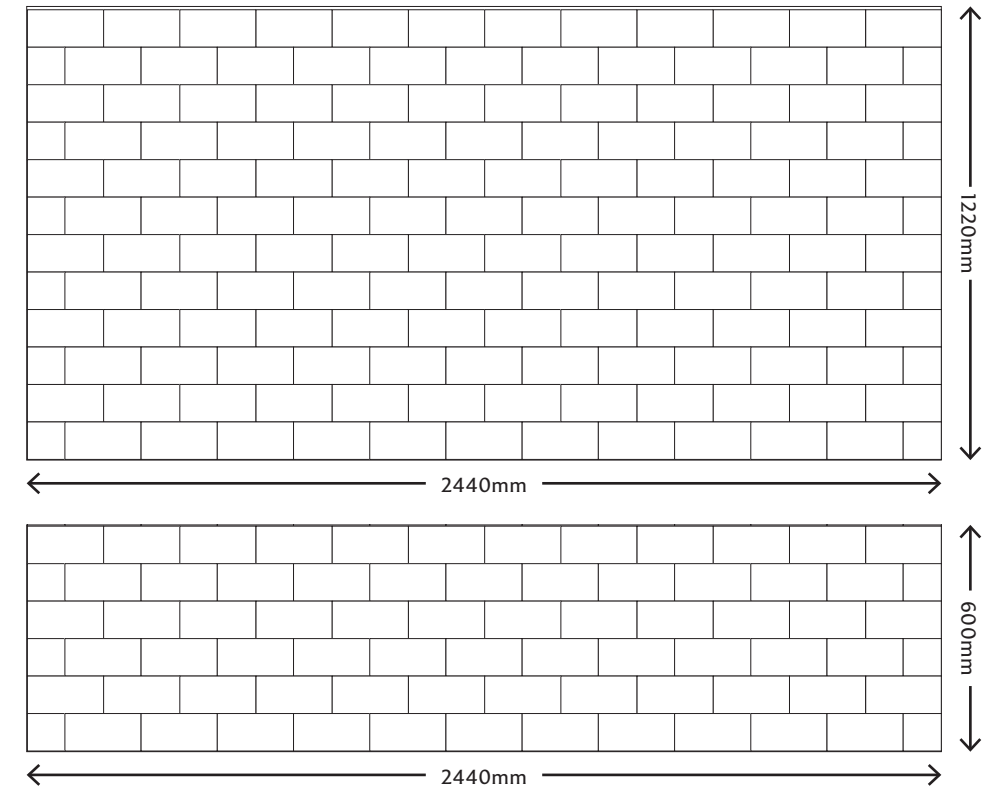
Jet Black	5060699097236
Fudge	5060699097250
Ice White	5060699097267
Ash Grey	5060699097205

ADHESIVE

White	5060699097304
-------	---------------

When installing in sequence, the panels may have to be trimmed to be aligned on site.

Splashback Sheet Size



Splashwall

For sample requests please visit www.splashwall.co.uk

For technical questions please call us on: **01738 494989**

To order please go in-store or visit diy.com

Faulty Products: if the product you purchase is faulty, we may offer a repair, exchange or refund as appropriate.

This may require inspection and approval by our representative.

This is in accordance with your customer rights, please call us on **03330 143357** to arrange.

For full fitting guide - please see www.splashwall.co.uk

Tel: 01738 494989
sales@splashwall.co.uk