

# Splashwall

Elegant Kitchen Splashbacks



2021/2022 Collection

**B&Q**





**Splashwall helps you achieve the hottest trends, at the smartest prices. With kitchen splashbacks that are designed to be installed quickly and easily and styles that will enable a stunning transformation to your kitchen.**

By using Splashwall you will be surprised at how quickly and easily you can update your kitchen.

We offer our splashbacks in a range of different materials. Elegant Acrylic looks just like glass, but can be cut on site making installation a breeze. Modern Alloy designs are patterned splashbacks that fill the entire wall space behind your hob, without compromising safety. Our Decor range is for those who really want to make a statement with their splashback and our Composite range give the metro tiles look, with none of the hassle of grout.



# KITCHEN TRENDS

Achieve these fantastic looks in your kitchen for a fraction of the cost, with the modern Splashwall system.

## #1 PATTERNS

We really love patterns on walls but without complicated tiling, or expensive decorative glass it's not been a look available in kitchen splashbacks - until now.

Our new Acrylic patterns offer all the benefits of our Acrylic range, but with the added attraction of beautiful decorative patterns.

Our Patterns will brighten up any kitchen space, giving a beautiful modern look.

*See our Acrylics on page 12*



## #2 NATURAL LOOK

Sometimes you can't beat the natural look for an earthy inspired kitchen design.

Our new Alloy range has a number of different styles which will make your space feel warm and beautifully natural.

*See our Alloy range on page 20*





### #3 BLOCK COLOURS

Block colour is a great way of adding fun and a sense of style to any kitchen. Unfortunately glass is tough to fit, as it's heavy and can't be cut down on site.

We now have a perfect modern alternative to glass - Acrylic. It offers the same glossy, reflective finish as glass and the same incredible depth of colour but is much easier to fit and holes for plug sockets can be cut quickly on site for no extra cost, making your installation easier and more fluid.

*See our Acrylics on page 12*



### #4 METRO TILES

Metro tiles have been in fashion for a while now and we love them in both traditional and modern kitchen looks, however the amount of grout on display can become an issue when cleaning. Our new composite range of splashbacks offer this metro tile look in a range of colours. They are made from waterproof solid grade laminate and can be installed quickly, without the need for an expert tiler. Best of all though, as no grout is used they are a doddle to clean.

*See our Composites on page 32*



# BENEFITS

From the sheer number of different styles on offer to the easy of installation, there are a range of different benefits to the Splashwall system.

## GREAT RANGE OF CHOICE

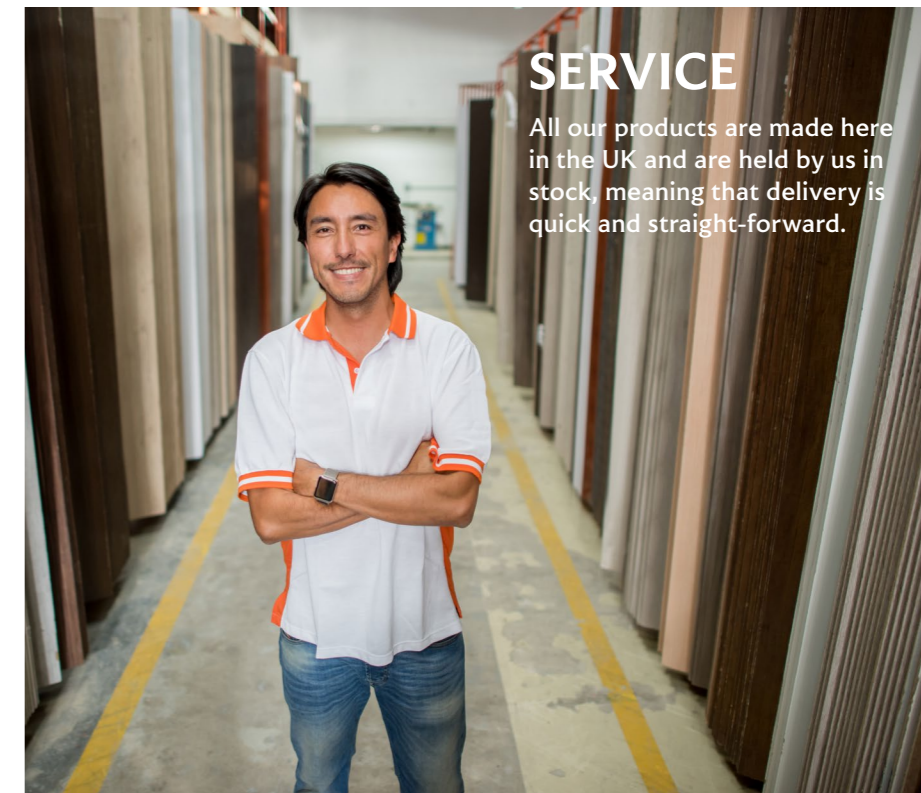
With over 20 Acrylic splashbacks in our range, 12 Alloy looks, 10 Decor designs and 5 different effects in our Composite range. We have a design that is ideal for any kitchen, whatever the budget and interior style.



## NO MESSY GROUT

Unlike tiles, grout is not required to fit the Splashwall splashbacks, which means less time to fit.

It also means that our splashbacks don't get mouldy and therefore, it's much easier to keep them looking clean.



## SERVICE

All our products are made here in the UK and are held by us in stock, meaning that delivery is quick and straight-forward.



## COST SAVING & EASY TO FIT

Our splashbacks are ideal for those who want the look and feel of beautiful natural stone, glass or other modern materials, but with none of the hassle of a complicated installation.

Our systems do not require a specialist tradesman and can be installed by a competent DIYer, saving you both time & money.





# OUR RANGE

From our Acrylic splashback range to our Alloy, Decor and Composite ranges, we have an easy-to-fit design that is ideal for any kitchen, whatever the budget and interior style.



## ACRYLIC - Page 12

The perfect modern splashback. Our acrylic range is the ideal alternative to glass, saving you both time and money.

**Sheet Sizes:** 2440mm x 1220 x 4mm, 2440 x 600 x 4mm

**Glass Hob Sizes:** 900 x 750 x 6mm, 600 x 750 x 6mm, 900 x 200 x 6mm, 600 x 200 x 6mm



## MDF DECOR - Page 26

Splashbacks in our stunning Decor range are easy to fit, easy to clean and are all designed to represent the charm of natural materials.

**Sheet Sizes:** 2440 x 1220 x 10mm, 2440 x 600 x 10mm



## ALLOY - Page 20

Bring your dream kitchen design to life with a beautifully patterned splashback that fills the entire wall space behind your hob, without compromising safety.

**Splashback Sizes:** 2440 x 600 x 4mm, 2440 x 750 x 4mm **Hob Sizes:** 600 x 800 x 4mm, 900 x 800 x 4mm



## COMPOSITE - Page 32

Our composite range of splashbacks are made from a super strong, completely waterproof, composite material with an embossed tile effect.

**Sheet Sizes:** 2440 x 1220 x 3mm, 2440 x 600 x 3mm



**Material:** 4mm engineered polymer  
**Sheet Sizes:** 2440 x 1220mm,  
2440 x 600mm  
**Sheet Thickness:** 4mm  
**Glass Hob Sizes:** 900 x 750mm,  
600 x 750mm, 900 x 200mm,  
600 x 200mm  
**Glass Hob Sheet Thickness:** 6mm  
**Splashback Style:** Royal Blue Gloss  
**Glass Hob Section:** Royal Blue

**A**n Acrylic splashback is a fantastic modern alternative to glass. Available in both glass like gloss and also in a more subtle matt finish.

Our acrylic panels are a highly engineered polymer enhanced with colour. Twenty - five times stronger than glass, they can be fitted by using basic hand tools, so great for any professional or DIY enthusiast.

Due to the heat generated by kitchen stoves we have colour matched glass to fit behind hobs when using our acrylic splashback system. This section is pre-cut and comes in varying sizes to choose from, so installation is still incredibly straightforward.

Shown here in Royal Blue Gloss, with matching glass hob splashback.



**Acrylic**





**Above**  
**Splashback Style:** Umbra Grey

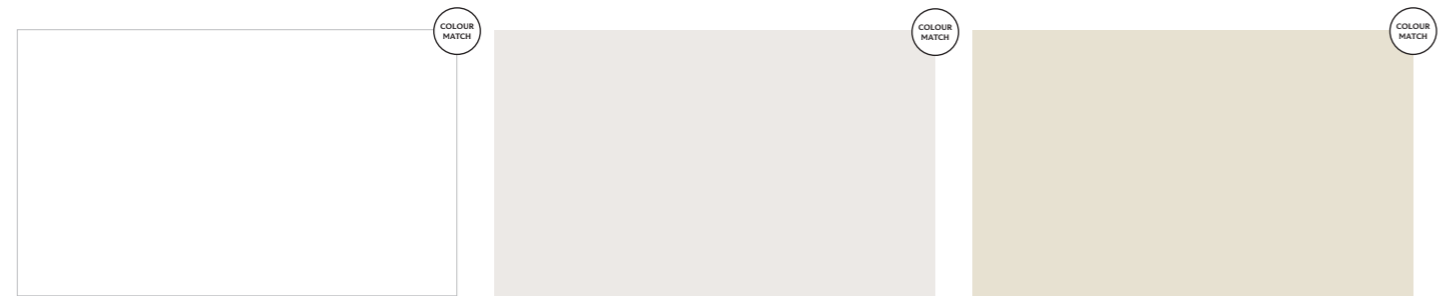
**Left**  
**Splashback Style:** Mist Matt  
**Glass Hob Section:** Mist

***Glass Hob Splashbacks***

Due to the heat generated by kitchen stoves we have colour matched glass to fit behind hobs when using our acrylic splashback system. This section is pre-cut and comes in varying sizes so installation is still incredibly straight-forward.



# ACRYLIC STYLES



**White | Gloss or Matt** Sealant: Ice White **Ivory | Gloss or Matt** Sealant: Vanilla **Classic Cream | Gloss or Matt** Sealant: Ivory



**Lime | Gloss or Matt** Sealant: Clear **Violet | Gloss or Matt** Sealant: Clear **Pumpkin | Gloss or Matt** Sealant: Clear



**Mist | Gloss or Matt** Sealant: Clear **Ocean | Gloss or Matt** Sealant: Clear **Royal Blue | Gloss or Matt** Sealant: Clear



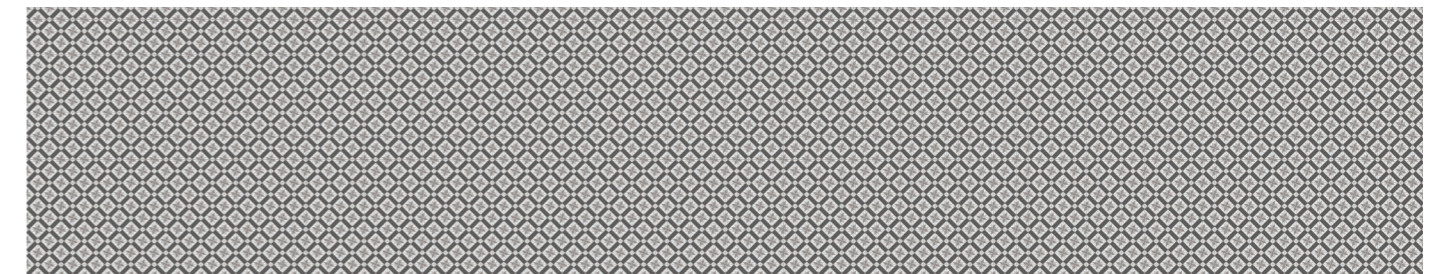
**Light Grey | Gloss or Matt** Sealant: Silver Grey **Umbra Grey | Gloss or Matt** Sealant: Chocolate **Flint | Gloss or Matt** Sealant: Basalt Grey



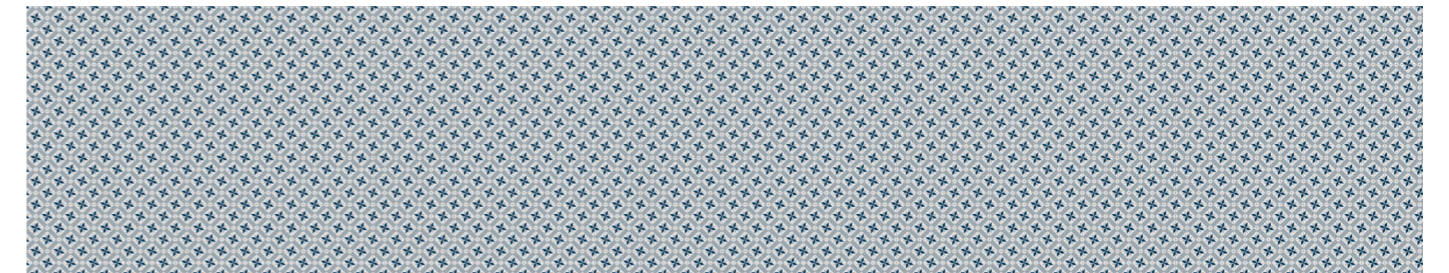
**Metallic White | Gloss** Sealant: Ice White **Metallic Silver | Gloss** Sealant: Silver Grey **Jet | Gloss or Matt** Sealant: Jet Black

All colours are representative - we recommend you see a sample before ordering.

# Splashwall



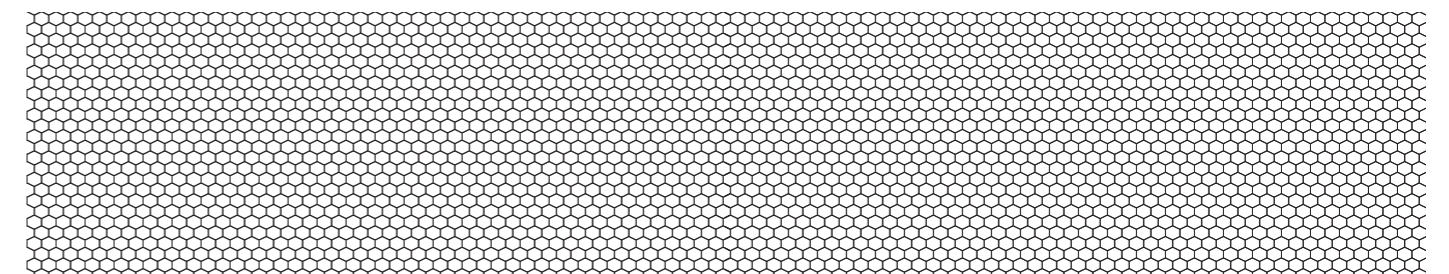
**Italian Tiles | Gloss \*** Sealant: Silver Grey



**Spanish Tiles | Gloss \*** Sealant: Silver Grey



**Misty Woods | Gloss \*** Sealant: Silver Grey



**Mosaics | Gloss \*** Sealant: Ivory



**Pyramids | Gloss \*** Sealant: Ash Grey

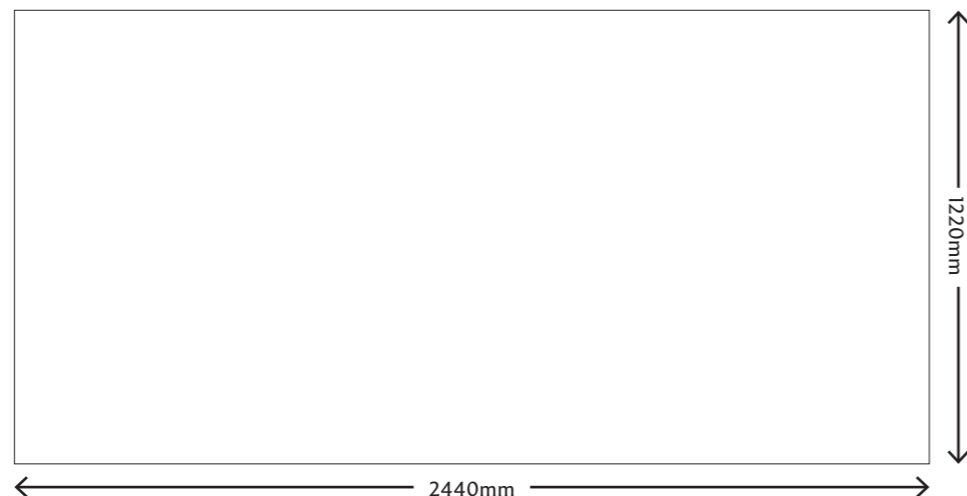
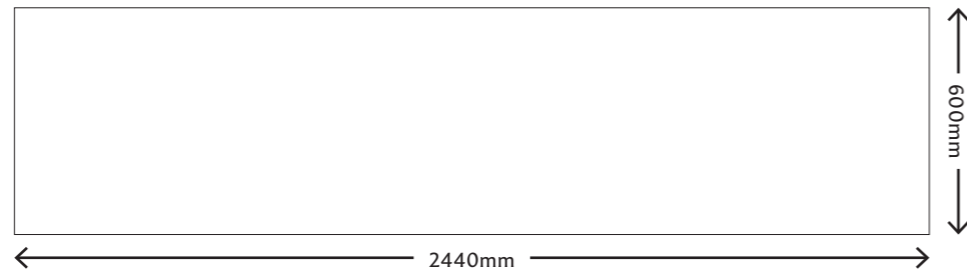
\* Patterns only available in 2440 x 600 x 4 mm



PANELS	2440 x 600mm Gloss	2440 x 1220mm Gloss	2440 x 600mm Matt	2440 x 1220mm Matt
Cream	5060699096598	5060699096833	5060699096611	5060699096857
Flint	5060482793178	5060482793116	5060482791754	5060482791495
Ivory	5060045037343	5060045037022	5060482791716	5060482791457
Jet	5060045037329	5060045037008	5060482791709	5060482791440
Light Grey	5060699097113	5060699097151	5060699097137	5060699097175
Lime	5060699097106	5060699097144	5060699097120	5060699097168
Metallic Silver	5060045037404	5060045037084	-	-
Metallic White	5060045037411	5060045037091	-	-
Mist	5060045037312	5060045036995	5060482791686	5060482791426
Ocean	5060045037299	5060045036971	5060482791662	5060482791402
Pumpkin	5060045037381	5060045037060	5060482791983	5060482791945
Royal Blue	5060045037398	5060045037077	5060482791761	5060482791501
Umbra Grey	5060699096604	5060699096840	5060699096628	5060699096864
Violet	5060045037336	5060045037015	5060482791693	5060482791433
White	5060045037275	5060045036957	5060482791655	5060482791396
Italian Tile	5060699096642	-	-	-
Misty Woods	5060699096659	-	-	-
Mosaics	5060699096666	-	-	-
Pyramids	5060699096673	-	-	-
Spanish Tile	5060699096635	-	-	-

SEALANTS	
Ash Grey	5060699097205
Basalt Grey	5060699097243
Chocolate	5060699097298
Clear	5060699097311
Ice White	5060699097267
Ivory	5060699097182
Jet Black	5060699097236
Silver Grey	5060699097281
Vanilla	5060699097199

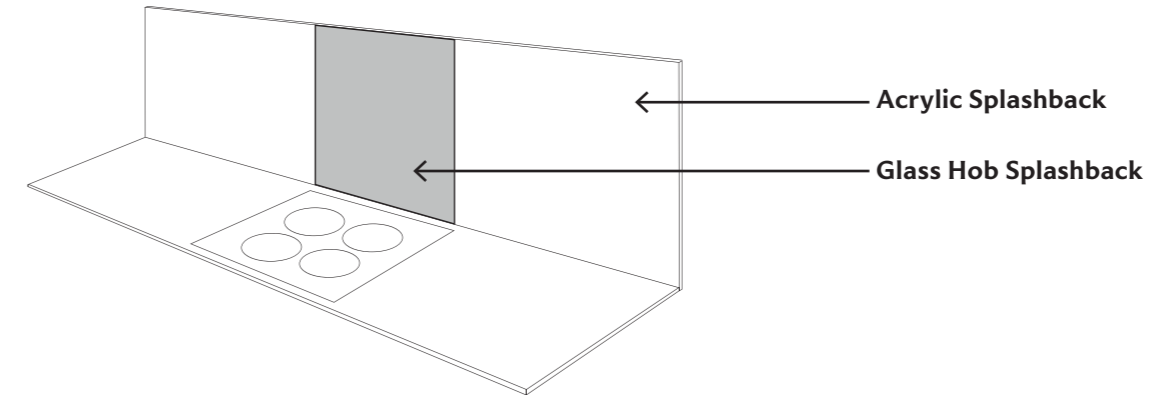
ADHESIVE	
White	5060699097328



## Acrylic Splashbacks and Hobs

Splashwall Acrylic can be used to each side of a gas hob.

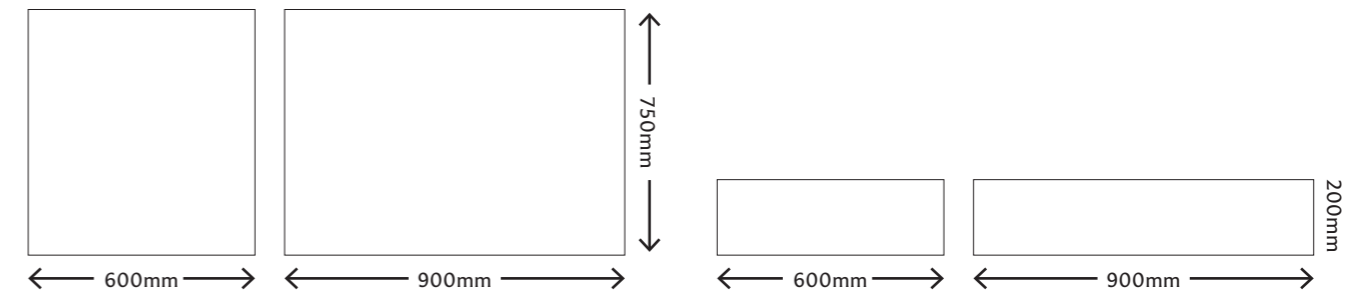
Behind the hob a colour-matched glass hob section can be installed.



GLASS HOB CODES	600 x 750mm	900 x 750mm	600 x 200mm	900 x 200mm
Cream	5060699097045	5060699097052	5060699097083	5060699097090
Flint	5060045039651	5060045039842	5060699091494	5060699091524
Ivory	5060045039606	5060045039798	5060045036681	5060045036834
Jet	5060045039590	5060045039781	5060045036667	5060045036810
Light Grey	5060699091920	5060699091951	5060699091982	5060699092019
Lime	5060699091906	5060699091937	5060699091968	5060699091999
Metallic Silver	5060045039675	5060045039866	5060045036759	5060045036902
Metallic White	5060045039699	5060045039880	5060045036698	5060045036841
Mist	5060045039576	5060045039767	5060045036643	5060045036797
Ocean	5060045039552	5060045039743	5060045036650	5060045036803
Pumpkin	5060045039644	5060045039835	5060045036728	5060045036872
Royal Blue	5060045039668	5060045039859	5060045036773	5060045036926
Umbra Grey	5060699097021	5060699097038	5060699097069	5060699097076
Violet	5060045039583	5060045039774	5060045036735	5060045036889
White	5060045039538	5060045039729	5060045036766	5060045036919

## Glass Hob Splashback Sizes

For fitting behind your hob, these colour-matched sections cannot be cut down. Only available in solid colours.





**Material:** Patterned aluminium

**Splashback Sizes:**

2440 x 600mm

2440 x 750mm

**Glass Hob Sizes:**

600 x 800mm

900 x 800mm

**Sheet Thickness:** 4mm

**Splashback Style:** Dappled Crackle Tile



**B**ring your dream kitchen design to life with a beautifully patterned splashback that fills the entire wall space behind your hob, without compromising safety. With Alloy, say goodbye to tiles and hello to a high performance, statement splashback you can place wherever you want.

Our Alloy splashbacks are fire-safe behind any hob and waterproof behind any sink.

**Alloy**

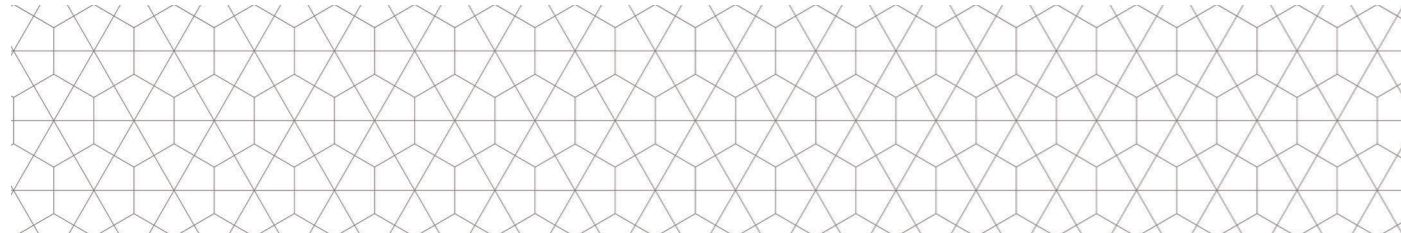


# ALLOY STYLES



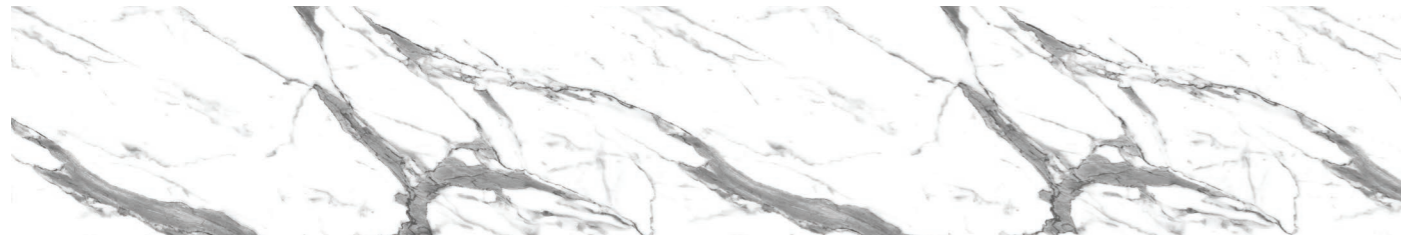
Walnut Geometric

Sealant: Mushroom



Geometry

Sealant: Ash Grey



White Marble

Sealant: Silver Grey



Urban Cluster

Sealant: Pewter Grey



Stellate Blush

Sealant: Ivory

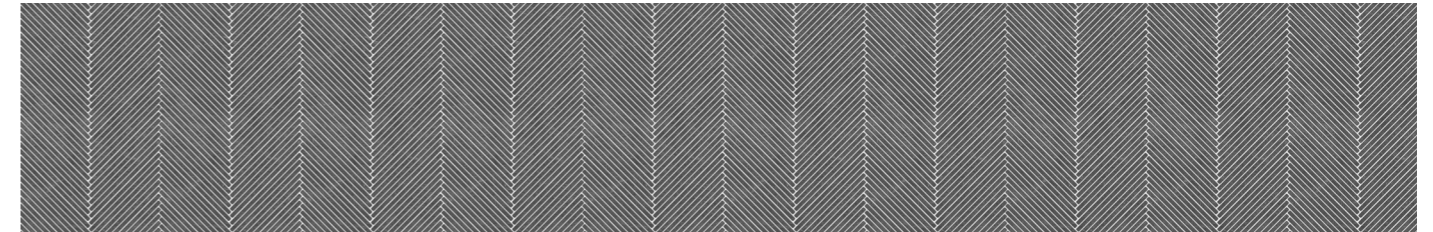


White Crackle Tile

Sealant: Silver Grey

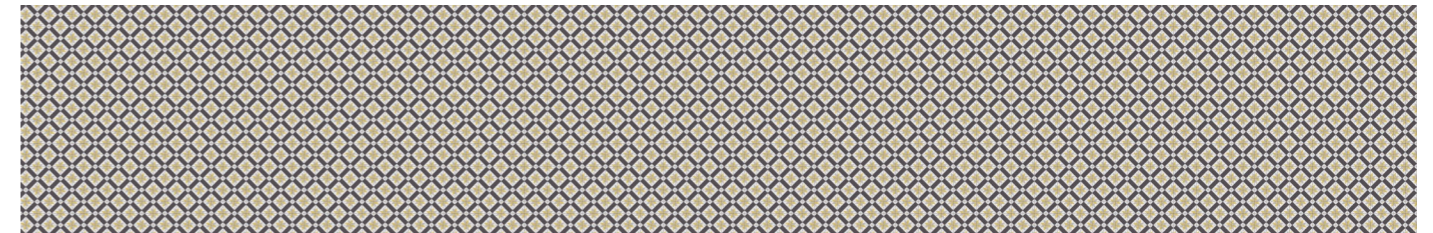
All colours are representative - we recommend you see a sample before ordering.

# Splashwall



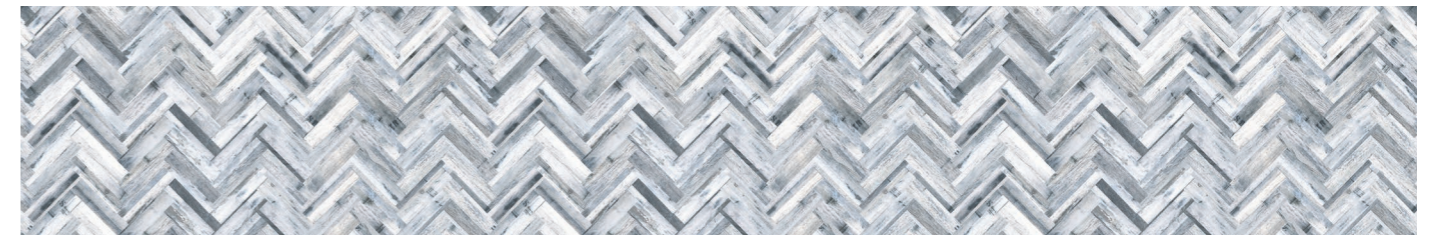
Herringbone Cement

Sealant: Pewter Grey



Maltese Ochre

Sealant: Ash Grey



Herringbone Whitewash

Sealant: Silver Grey



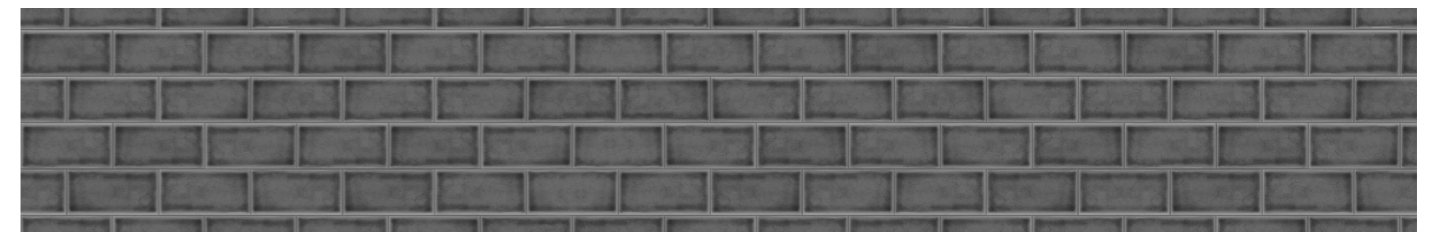
Casablanca Multi

Sealant: Fudge



Modern Victoria

Sealant: Silver Grey



Dappled Crackle Tile

Sealant: Pewter Grey



# ALLOY TECH

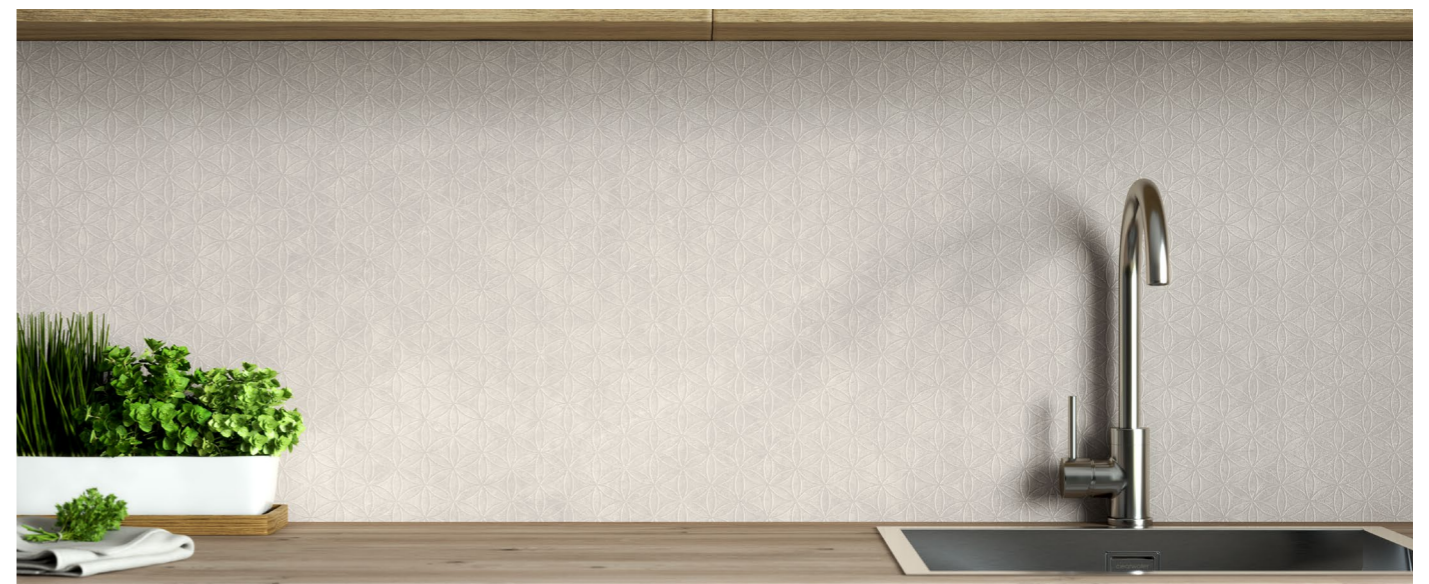
PANELS	2440 x 750mm	2440 x 600mm	900 x 800mm	600 x 800mm
Casablanca Multi	5060699097632	5060699097649	5060699097656	5060699097663
Dappled Crackle Tile	5060699097670	5060699097687	5060699097694	5060699097700
Geometry	5060699097717	5060699097724	5060699097731	5060699097748
Herringbone Cement	5060699097755	5060699097762	5060699097779	5060699097786
Herringbone Whitewash	5060699097793	5060699097809	5060699097816	5060699097823
Maltese Ochre	5060699097830	5060699097847	5060699097854	5060699097861
Modern Victoria	5060699097878	5060699097885	5060699097892	5060699097908
Stellate Blush	5060699097915	5060699097922	5060699097939	5060699097946
Urban Cluster	5060699097953	5060699097960	5060699097977	5060699097984
Walnut Geometric	5060699097991	5060699098004	5060699098011	5060699098028
White Crackle Tile	5060699098035	5060699098042	5060699098059	5060699098066
White Marble	5060699098073	5060699098080	5060699098097	5060699098103
<b>EDGE PROFILES</b>	<b>600mm</b>	<b>750mm</b>	<b>2440mm</b>	
Anthracite	5060699098110	5060699098127	5060699098134	
Silver	5060699098141	5060699098158	5060699098165	
<b>EXTERNAL CORNER PROFILES</b>	<b>600mm</b>	<b>745mm</b>		
Anthracite	5060699098172	5060699098189		
Silver	5060699098196	5060699098202		
<b>INTERNAL CORNER PROFILES</b>	<b>600mm</b>	<b>745mm</b>		
Anthracite	5060699098219	5060699098226		
Silver	5060699098233	5060699098240		
<b>JOINTING PLATE</b>	<b>595mm</b>	<b>745mm</b>		
Anthracite	5060699098257	5060699098264		
Silver	5060699098271	5060699098288		
			<b>SEALANTS</b>	
			Ash Grey	5060699097205
			Fudge	5060699097250
			Ivory	5060699097182
			Mushroom	5060699098295
			Pewter Grey	5055286003707
			Silver Grey	5060699097281
			<b>ADHESIVE</b>	
			White	5060699097328



Standard Hob Splashback



Wide Hob Splashback



High Rise Splashback



Mid Rise Splashback

Alloy Splashbacks come in four sizes, but you're not limited by the size of the panel you buy - it's easy to cut your panels to the size and shape you need.

**High Rise Splashback** – The 750mm height of the high rise splashback allows you to fill the wall right up to hood height with design whilst being safe in the knowledge they are certified to be there. You don't need to interrupt the design with a different panel type to protect your home

**Mid Rise Splashback** – The Mid Rise splashback's 600mm height is ideal for use behind a sink, or filling the space behind a hob between worktop and upper cabinets.

For a focused area of design a hob panel is the perfect solution. Choose between two different sizes both with an 800mm height.



**Material:** MDF  
**Sheet Sizes:** 2440 x 1220mm,  
2440 x 600mm  
**Sheet Thickness:** 10mm  
**Finish:** Matt, gloss or satin  
**Style Shown:** Herringbone Tile



# MDF Decor

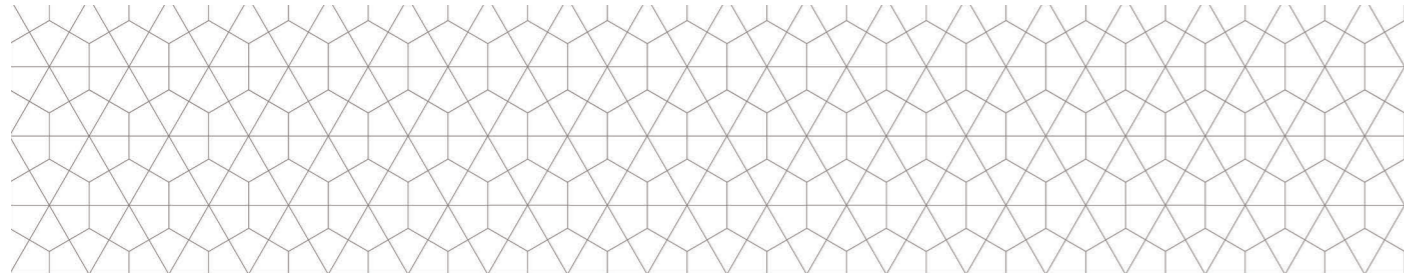
Using Splashwall MDF Decor range it is easy to create an unforgettable, modern looking kitchen that most importantly, is equally practical.

Each MDF Decor style is designed to represent the charm of natural materials but with a much simpler and cost effect installation.

All our Splashwall MDF Decor splashbacks are made using a modern, practical moisture resistant MDF core. Shown here in a beautiful traditional Herringbone Tile effect.

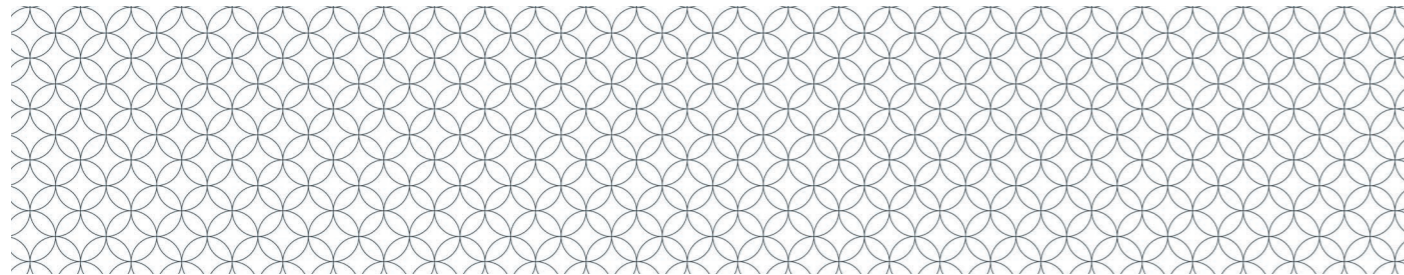


# MDF DECOR STYLES



Geometric Kitchen

Sealant: Ivory



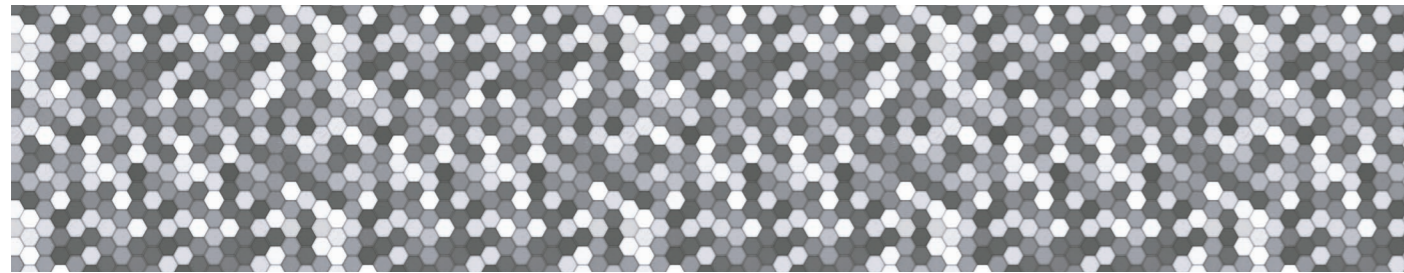
Graphic Kitchen

Sealant: Ivory



Herringbone Tile

Sealant: Silver Grey



Hexagon Tile

Sealant: Silver Grey



Concrete Tile

Sealant: Basalt Grey

All colours are representative - we recommend you see a sample before ordering.

# Splashwall



Mediterranean Kitchen

Sealant: Chestnut



Mediterranean Kitchen Grey

Sealant: Silver Grey



Greek Marble

Sealant: Ice White



Brushed Copper

Sealant: Clear



Brushed Aluminium

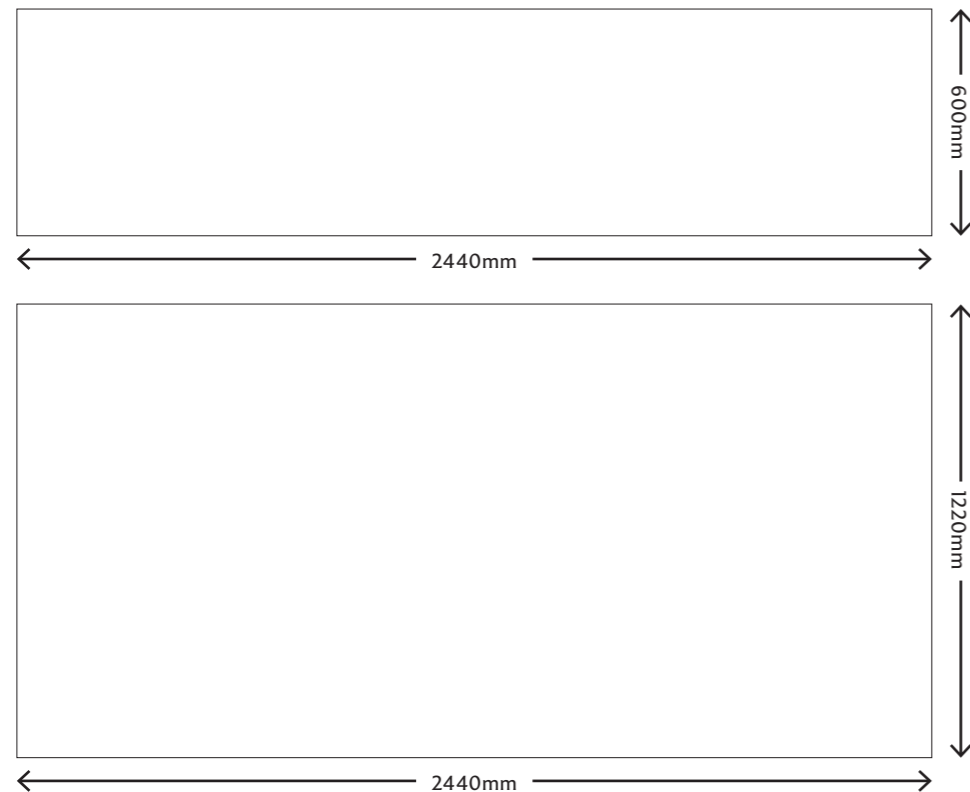
Sealant: Clear



PANEL CODES	2440 x 600mm	2440 x 1220mm
Brushed Aluminium	5060699096772	5060699096963
Brushed Copper	5060699096765	5060699096956
Concrete Tile	5060699096727	5060699096918
Geometric Kitchen	5060699096697	5060699096888
Graphic Kitchen	5060699096680	5060699096871
Greek Marble	5060699096758	5060699096949
Herringbone Tile	5060699096703	5060699096895
Hexagon Tile	5060699096710	5060699096901
Mediterranean Kitchen	5060699096734	5060699096925
Mediterranean Kitchen Grey	5060699096741	5060699096932

SEALANT CODES		ADHESIVE	
Clear	5060699097311	White	5060699097304
Basalt Grey	5060699097243		
Chestnut	5060699097212		
Ivory	5060699097182		
Ice White	5060699097267		
Silver Grey	5060699097281		

### Splashback Sheet Size



### Cutting:

Measure your splashback and use a soft pencil on the surface. If you do not wish to mark the surface then put masking tape down first and mark on the tape. This will also help on darker colours to make sure the pencil line is visible. Mark the face if cutting with a handsaw or the back if using a power saw and always double check your measurements before cutting. Remember to allow for any edging to be added.

**NOTE:** Use appropriate safety equipment such as face mask and eye protection while performing any cutting. Ensure all pieces, including off cuts, are adequately supported.

When using a handsaw the decorative face should be uppermost, keeping the saw at a low angle to ensure the best cut. Ensure that your saw is sharp and well set and has 10/12 teeth per inch. When using an electric saw you should cut the splashback face down.

### Cut-outs:

Shaped cut-outs can be formed by drilling 8mm diameter holes in the corners of the required shape and then cutting between using a fine wood jigsaw blade. It is important that the splashback is supported at all times. With all cut-outs a radius of at least 4mm must be left in the corners.

### Edging:

Splashwall MDF Decor Splashbacks are not edged. We suggest using splashwall trims to finish exposed edges.

### Cleaning:

For general cleaning gently wipe the surface using either a damp cloth or sponge with a mild detergent or non-abrasive cleaner diluted in warm water. It is important to avoid using abrasive scouring powders, creams or polishes.

It is always advisable to wipe off any spillages immediately.

Whilst the surface will resist most household foodstuffs, including coffee and red wine, certain items such as shoe polish, dyes and nail varnish will stain.

### Installing:

**NOTE:** The bottom edge of the splashback, where it meets the worktop should be sealed with Complete coloured sealant to avoid moisture ingress.

**NOTE:** For installations behind a hob please refer to the hob manufacturers guidelines for fitting suitability and requirements.

**NOTE:** The splashback should be adhered to the wall with Complete adhesive.

When fixing the splashback, apply Complete adhesive to the back of the splashback in vertical beads spaced 100mm apart. The area directly behind the hob should also have additional vertical beads spaced 20mm apart and at least 300mm high.

Press down to ensure the Complete adhesive is 'squeezed out' and wipe off any excess adhesive immediately, using white spirit.

You may need to push into place if the wall is running off square and hold in place with a combination of clamps and push sticks until the adhesive has set. Once the adhesive is set the installation is complete.



**Material:** Solid grade laminate  
**Sheet Sizes:** 2440 x 600mm  
**Sheet Thickness:** 3mm  
**Finish:** Gloss or brushed  
**Style Shown:** White

**O**ur composite range of splashbacks is made from a super strong, waterproof composite, that has a stunning embossed tile effect. This gives you the look and feel of traditional metro tiles, but with all the modern benefits of our unique system. Shown here in our lovely and modern White Tile decor.

**Larger Runs**

For large kitchens, with splashbacks longer than 2440mm required, our panels can easily be butted next to each other.



**Composite**

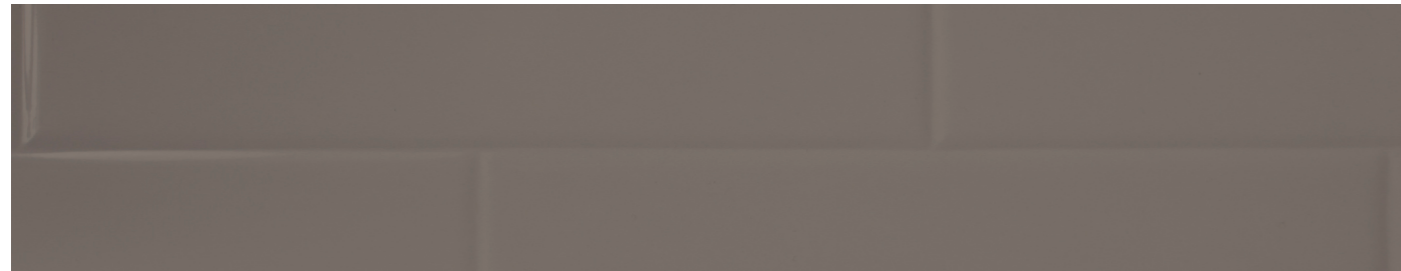


# COMPOSITE STYLES



Brushed Black | Gloss

Sealant: Jet Black



Coffee | Gloss

Sealant: Fudge



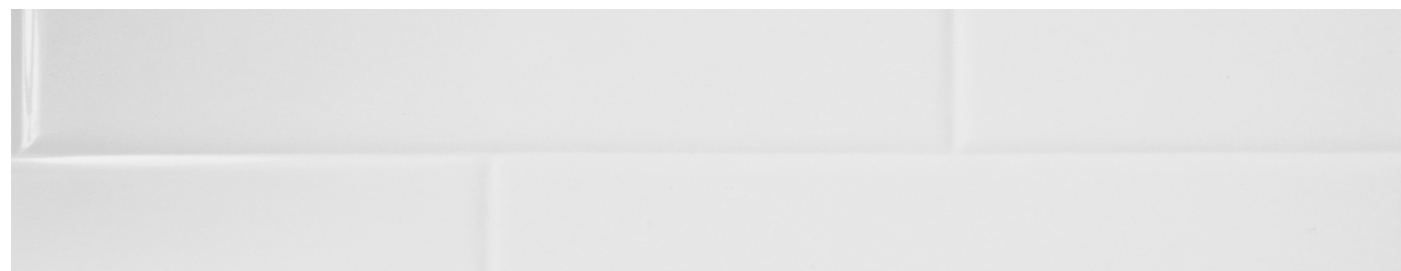
Cream | Gloss

Sealant: Ice White



Grey | Gloss

Sealant: Silver Grey



White | Gloss

Sealant: Ash Grey

# COMPOSITE TECH

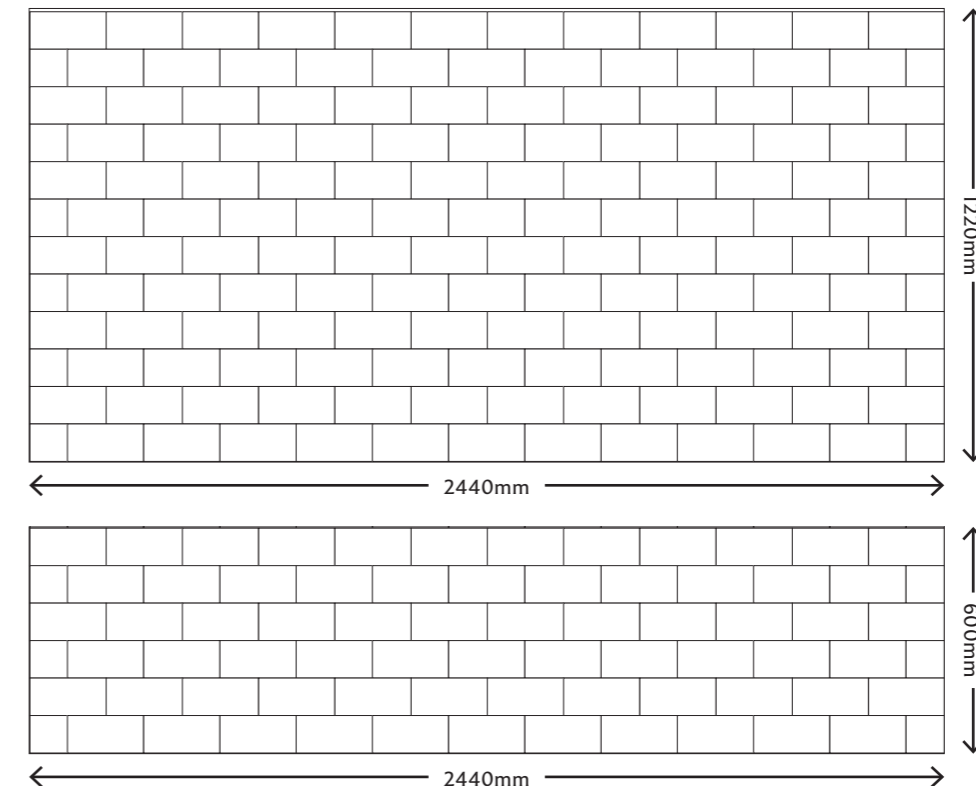
## Splashwall

PANEL CODES	2440 x 600mm	2440 x 1220mm
Brushed Black	5060699096826	5060699097014
Coffee	5060699096802	5060699096994
Cream	5060699096796	5060699096987
Grey	5060699096819	5060699097007
White	5060699096789	5060699096970

SEALANT CODES	ADHESIVE
Jet Black	White
Fudge	5060699097304
Ice White	
Silver Grey	
Ash Grey	

When installing in sequence, the panels may have to be trimmed to be aligned on site.

### Splashback Sheet Size





# Splashwall

For sample requests please visit [www.splashwall.co.uk](http://www.splashwall.co.uk)

For technical questions please call us on: **01738 494989**

To order please go in-store or visit [diy.com](http://diy.com)

Faulty Products: if the product you purchase is faulty, we may offer a repair, exchange or refund as appropriate.

This may require inspection and approval by our representative.

This is in accordance with your customer rights, please call us on **03330 143357** to arrange.

For full fitting guide - please see [www.splashwall.co.uk](http://www.splashwall.co.uk)

**Tel: 01738 494989**  
**[sales@splashwall.co.uk](mailto:sales@splashwall.co.uk)**

**Available at:**

