

USER MANUAL

CANVAS HAMMOCK

WF0269



Please read this manual carefully before assembly or use and keep it properly.

SAFETY INFORMATION

Safety Cautions

1. The hammock swing chair can support up to 200 kg (440 lbs). Exceeding this limit may result in damage to the chair and serious injury.
2. Ensure that the chair is securely attached to a sturdy support structure capable of holding at least 200 kg. Always use the provided hardware kit for installation.
3. Follow the assembly instructions meticulously. Improper assembly can lead to structural failure and potential injury.
4. Regularly inspect the hanging chair and its attachments for signs of wear, corrosion, or damage. Do not use the chair if any parts are compromised.
5. This chair is designed for one person at a time. Multiple users can exceed the weight limit and cause the chair to break.
6. The chair is suitable for both indoor and outdoor use. Ensure that outdoor installations are protected from extreme weather conditions to prevent wear and tear.
7. This chair is intended for gentle rocking and relaxation, not vigorous swinging. Excessive movement can cause the chair to detach or damage the structure.
8. The chair is made from eco-friendly canvas and sturdy metal. Ensure that the materials are not exposed to sharp objects or harsh chemicals that could damage them.
9. Keep the chair away from open flames and high heat sources as the canvas material is flammable.
10. Always supervise children and pets when using the hanging chair. Ensure they do not jump or play aggressively on the chair.
11. This product is not suitable for children under the age of 12 without adult supervision.
12. If you notice any unusual noises, fraying, or structural instability, stop using the chair immediately and inspect for issues.
13. In case of an accident or injury, seek first aid or medical attention as needed.
14. Keep this manual for future reference and provide it to any new users.

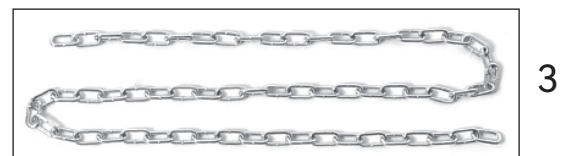
Cleaning&Maintenance

1. Clean the canvas material with a mild detergent and water. Avoid using harsh chemicals or abrasive cleaners.
2. When not in use, store the chair in a dry place to prevent mildew and rust. Disassemble if necessary to save space and protect from environmental damage.

SPECIFICATIONS

Overall Dimensions	100cm W x 130cm H
Material	Metal + Canvas
Colour	White
Weight Capacity	200kg
Scope of Use	Indoors and outdoors

PARTS LIST



- 1. Steel anti-skid pole*1
- 2. Hammock chair*1
- 3. Stainless steel chain*1
- 4. Screws*8

- 5. Snap hooks*2
- 6. Steel ceiling mount plate*1
- 7. Hanging rope*1

ASSEMBLY GUIDE

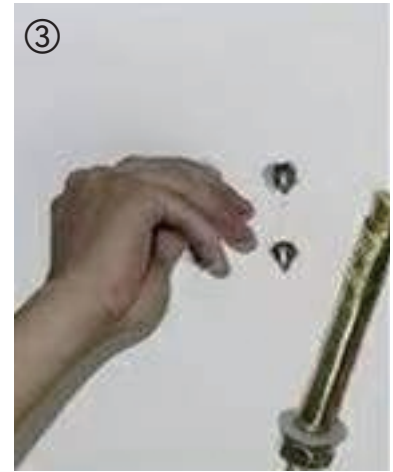
Assemble the ceiling mount plate



① Marking the location of drilled holes in the ceiling.



② Drill four holes with an electric drill.



③ Install the screws into the holes.



④ Tighten with a spanner.



⑤ Tap the screws with a hammer.



⑥ Tighten the screws with a spanner to expand them.



⑦ Remove the nuts and washers.



⑧ Install the ceiling mount plate, nut and washer.



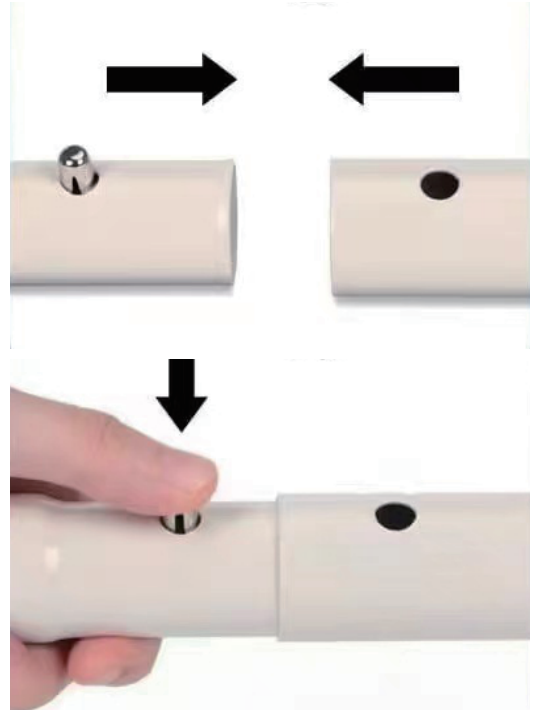
⑨ Tighten with a spanner.

Assemble the hammock chair



Complete the assembly of the hammock chair in the order shown in the picture.

*Assemble the steel anti-skid pole



*Note the assembly order of the rope and the chair.



