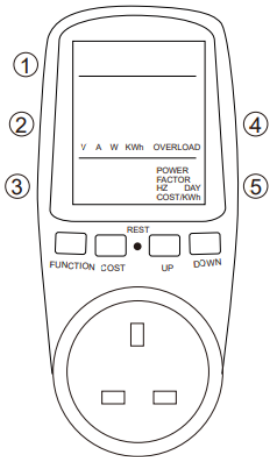


## LCD Energy Monitor

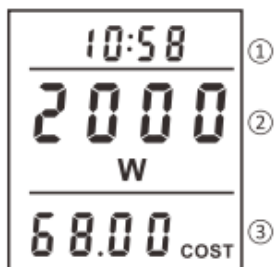
This LCD Energy Monitor is used to measure the power consumption of household appliances and calculate electricity costs. The product has a built-in rechargeable battery. If it is newly purchased or not used for a long time, please plug it in to charge it. When the display and key response are abnormal, you can press the "RESET" button to reset the system. After resetting, you need to reset the parameters.

### LCD



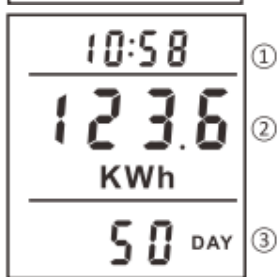
- ① Time display bar
  - ② V/A/W/KWh value
  - ③ POWER FACTOR/HZ/COST/KWh value
  - ④ V: Voltage
  - ⑤ POWER FACTOR: Active Power and Apparent Power Ratio
- A: Electricity (KWh)kilowatt hour: Electricity Consumption  
 W: Power;  
 OVERLOAD: Power Overload Reminder  
 HZ: AC Frequency  
 DAY: Cumulative Electricity Consumption Days  
 COST: Cumulative Amounts of Electricity Consumption  
 KWh: Cumulative Electricity Consumption  
 COST/KWh: Unit Price of Electricity

**Instructions** - Press the *Function* button to view the detection results, and the pages are displayed as follows:



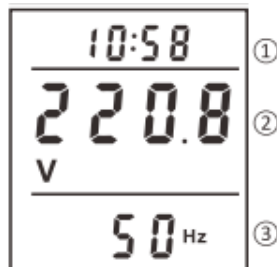
#### Page 1:

- ① Running Time: Cumulative Running Time of Electrical Appliances, after 24 Hours, DAY +1.
- ② Current Power: The Actual Power of the Electrical Appliance Connected to it, Unit: W.
- ③ Cumulative Electricity Bill Costs consumed to date, Unit: Cost



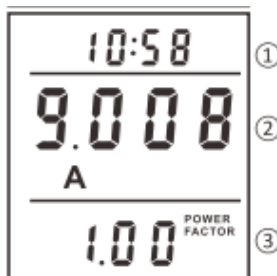
#### Page 2:

- ① Running Time
- ② Cumulative Electricity Consumption: Cumulative Electricity Consumption up to now, Unit: KWh.
- ③ Accumulated time: the Cumulative Number of Days the Appliance has been Running, Unit: DAY.



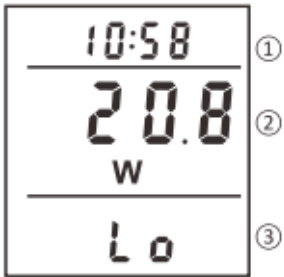
#### Page 3:

- ① Running Time
- ② Grid Voltage: Current Real-time Voltage of the Grid, Unit: V.
- ③ Grid Frequency: Grid AC Frequency, Unit: HZ.



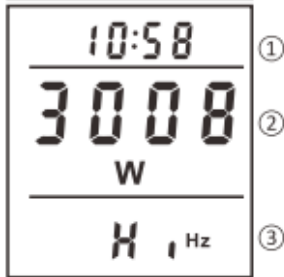
#### Page 4:

- ① Running Time
- ② Real-time Current: the Real-time Current of the Electrical Appliance Connected to it, Unit: A.
- ③ Power Factor: the Power Factor of the Electrical Appliance Connected to it.



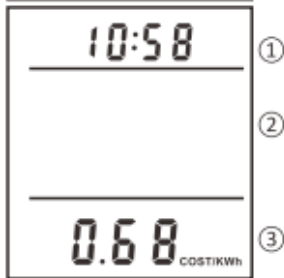
**Page 5:**

- ① Running Time
- ② Minimum Power: the Minimum Power Recorded during Operation, Unit: W.



**Page 6:**

- ① Running Time
- ② Maximum Power: the Maximum Power Recorded during Operation, Unit: W.



**Page 7:**

- ① Running Time
- ③ Unit Price of Electricity: Set Unit Price, Unit: COST/KWh.

**Unit Price of Electricity**

**Unit price view**

Press the "COST" button to quickly check the current unit price of electricity bill

**Unit price setting:**

Long press "COST" button to enter unit price setting,  
 Press the "FUNCTION" key to select the setting position  
 Press "UP key" or "DOWN key" to adjust the value  
 Press the "COST" key to confirm and exit the setting.

**Display range**

Voltage: 0.0V ~ 9999 V  
 Current: 0.000A ~ 65.00A  
 Power: 0.0W ~ 9999W  
 Frequency: 0 ~ 999HZ  
 Power factor: 0.00 ~ 1.00  
 Electricity: 0.000KWH ~ 9999KWH  
 Unit price: 0.00 ~ 99.99  
 Amount of electricity fee: 0.00 ~ 9999

Overload alarm: When the current exceeds 16A or the power exceeds 3680W, the "OVERLOAD" icon flashes.  
 When the detected power value is less than 1.0W, it is regarded as local power consumption, and the time is not accumulated.

**Specifications**

Working voltage: 240V  
 Voltage frequency: 47~63HZ  
 Working temperature: 0~40°C  
 Working current: ≤13A  
 Measurement accuracy: ±2%

**Guarantee**

This LCD Energy Monitor is guaranteed for a period of 12 months from date of purchase.

Please retain for future reference



Lowenergie is a registered Trademark

www.lowenergie.com

Lowenergie, WA2 7UB UK