



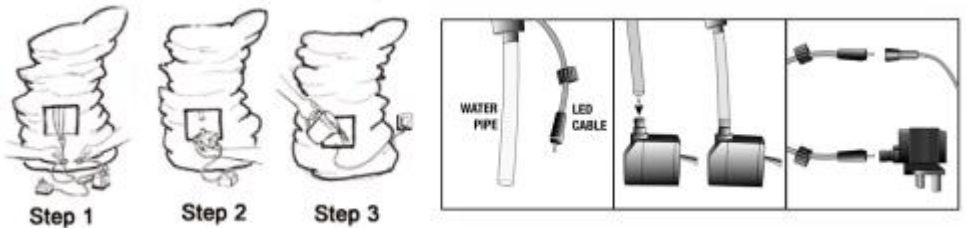
# **CYLINDRICAL FOUNTAIN**

# SAFETY INSTRUCTIONS

- The fountain should always be placed on a flat and clean surface.
- There must always be enough clean water in the well to prevent the pump running dry.
- Never let the pump run dry.
- Distilled water is recommended, but not necessary.
- Always unplug the power cord before maintenance.
- Operate the pump only with the voltage specified on the adapter.
- Never use the damaged power cord, and it should be disposed immediately.
- Check the hoses and kinks for blockages before settling to avoid the casing of the wells.
- Vibration and loud disturbing noises may come during operation.
- The pump must always be completely covered with water to an appropriate amount to ensure cooling.
- The water temperature should never be over 35°C.
- Never touch the drive unit in operation.
- Do not turn on the pump when the pump parts or the product is damaged.
- The head of the pump can be set on different models.
- For the models with glass ball, connect the LED to the hoses of the tube.
- Please follow all instructions, then you will have continued enjoyment of the product.

# OPERATION

- Unpack all parts carefully and check them for completeness. Make sure the fountain is placed on a smooth flat surface.
- Connect the pump to the hose and place the pump in the bottom of the fountain.
- If the fountain comes with LED, connect it to the pump and put the LED to its proper place.
- Fill the fountain with water and make sure the pump is totally submerged.
- Plug the power cord into the power outlet and enjoy the wonderful atmosphere.



\*Attention! The illustration can deviate optically, since the pumps are various.

\*Distinguish fountain in size and appearance slightly, the operation is not affected.

# SECURITY TIPS

- Obey absolutely valid regulations on the electrical security.
- Never run pump dry Pumping inflammable.
- As well as all other aggressive liquids is prohibited.
- Any altering of the product itself or changing of the components is forbidden, any warranty cannot be granted.
- For longer storage periods, the pump clean, rinse with clear water and dry at room temperature.

## **Living and Home**

### **A Home is for Living in**

For comfort and style update your living space.

Browse contemporary and classic designs and find the perfect home to your look and the perfect spot to lounge.

Put your feet up and sink into our stylish home decor.

We are mainly engaged in home, outdoor, home appliances, office, bathroom, provided high quality and affordable products for you. We value every one of our customers and our professional service team is always available to help you.

[livingandhome.co.uk](http://livingandhome.co.uk)