



SHOWER FAUCET SET

CONSTANT TEMPERATURE MAIN ITEM INSTRUCTION FOR USE

- Recommended pressure: 0.1-0.5Mpa.
- Cold water supply temperature: 8-29°C.
- Hot water supply temperature: 55-85°C.
- Outlet water temperature range: 20-50°C.
- Security stop: 38°C.
- Cold water supply failure test: within 5 seconds of cold water supply failure. Outflow rate $\leq 200\text{ml}$ (if the outflow rate $\geq 200\text{ml}$, outlet temperature $\leq 42^\circ\text{C}$) the outflow rate $\leq 300\text{ml}$, within 30 seconds.
- Outflow temperature Auto-aligning sensitivity:

When inlet water temperature is constant and pressure varies by 20%, outlet water temperature variation will be $\pm 2^\circ\text{C}$;

When inlet water pressure is constant and hot water temperature varies from 55°C to 85°C or cold water from 8°C to 29°C outlet water temperature variation will be $\pm 2^\circ\text{C}$.
- The influence of water supply pressure on outflow temperature (see Fig.1) Flow rate (see Fig.1).
- Applicable standard: CSA B125-98, ASSE 1016, EN1111, AS4032.1. AS4032.2.

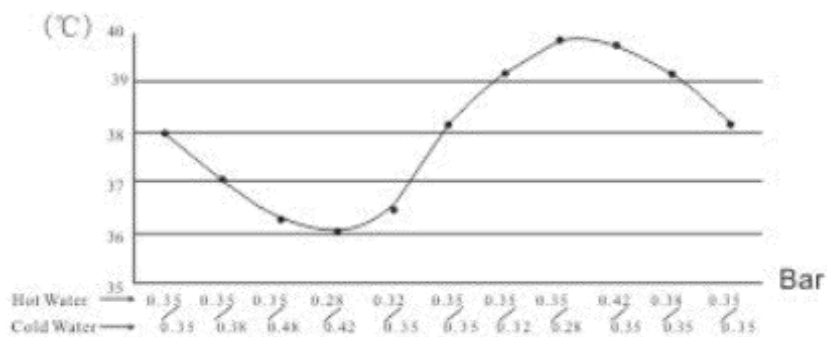


Fig. 1

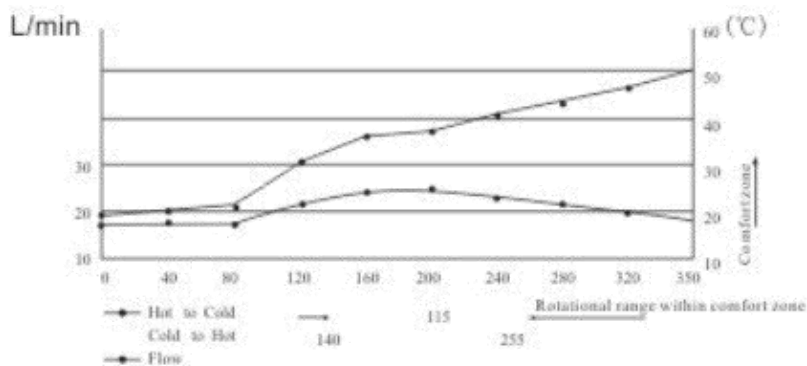
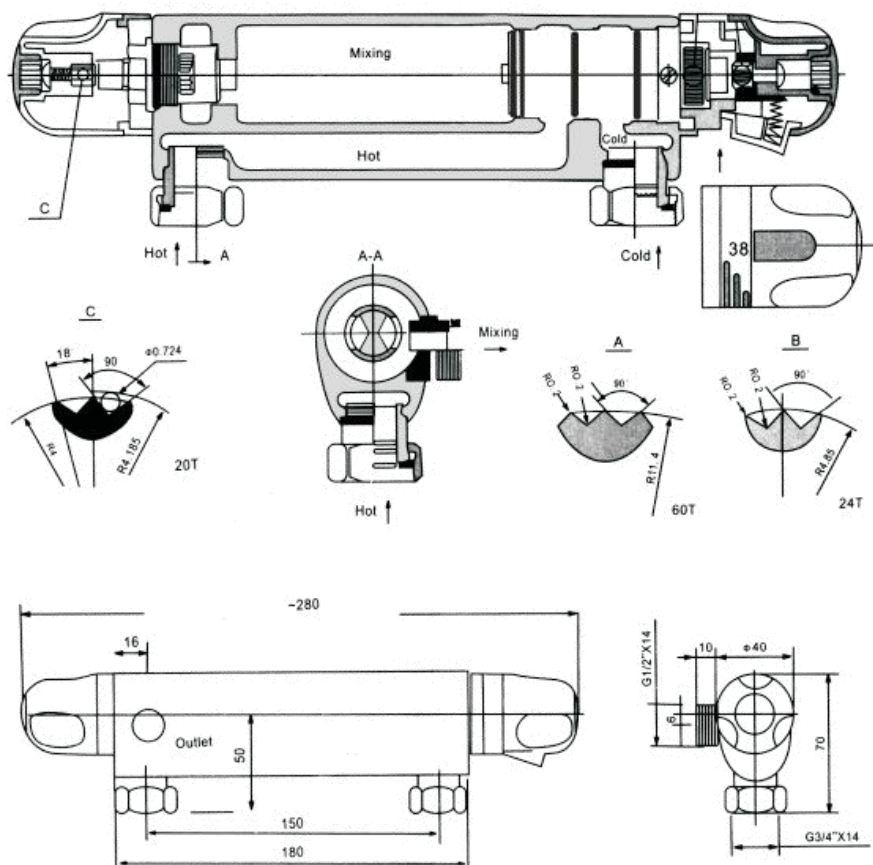
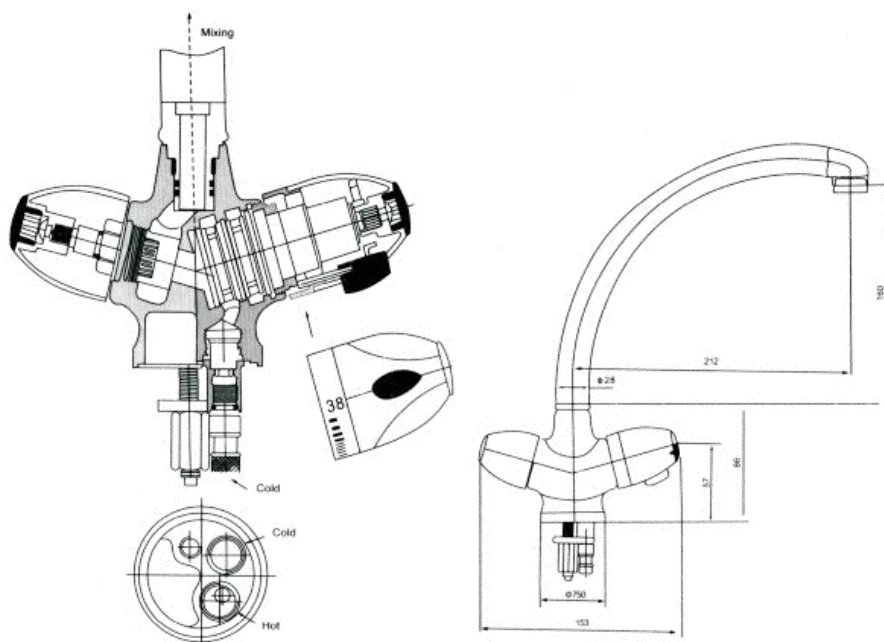
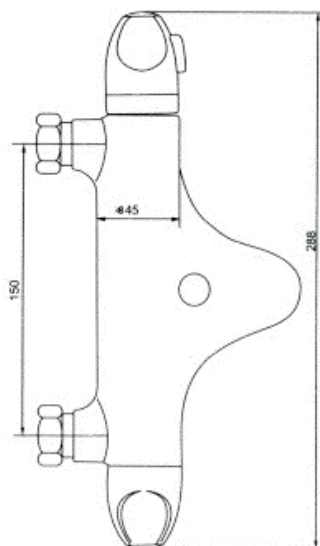
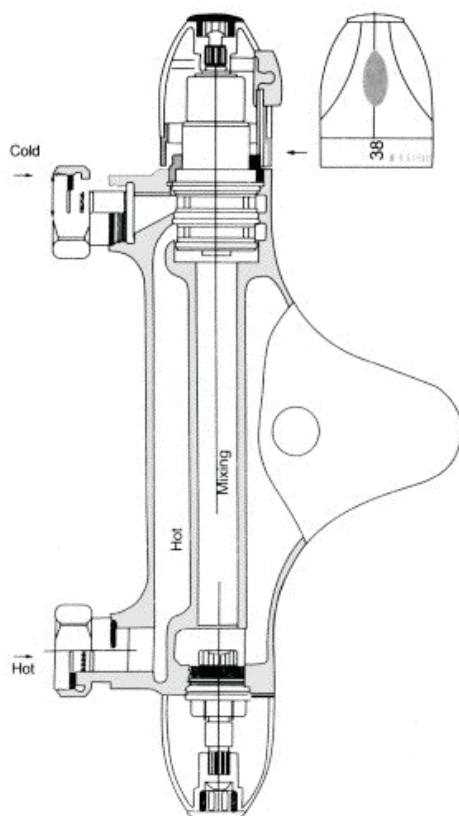
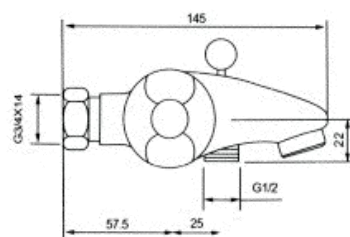
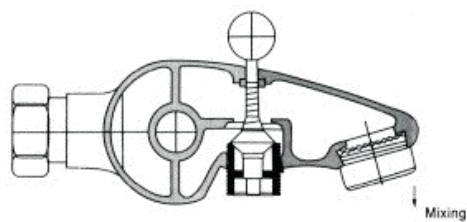


Fig. 2

INSTALLATION DIAGRAM







Living and Home

A Home is for Living in

For comfort and style update your living space.

Browse contemporary and classic designs and find the perfect home to your look and the perfect spot to lounge.

Put your feet up and sink into our stylish home decor.

We are mainly engaged in home, outdoor, home appliances, office, bathroom, provided high quality and affordable products for you. We value every one of our customers and our professional service team is always available to help you.

livingandhome.co.uk