



# **WOODEN FOLDING PLANT STAND**

# SAFETY & WARNINGS

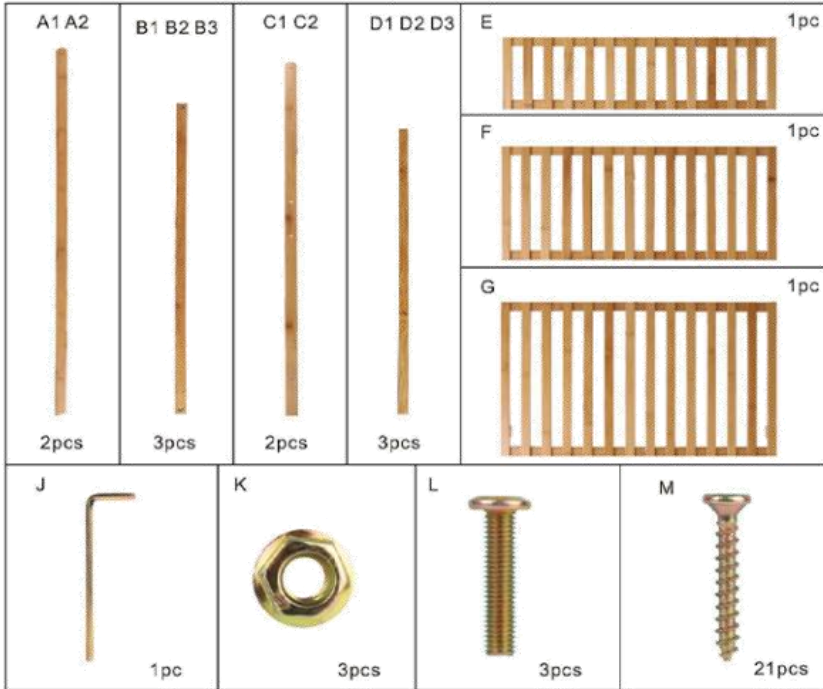
## Warning

- Please read all instructions carefully.
- Retain instructions for future reference.
- Separate and count all parts and hardware.
- Read through each step carefully and follow the proper order.
- We recommend that, where possible, all items are assembled near to the area in which they will be placed in use, to avoid moving the product unnecessarily once assembled.
- Always place the product on a flat, steady and stable surface.
- Keep all small parts and packaging materials for this product away from babies and children as they potentially pose a serious choking hazard.
- Parts of the assembly will be easier with 2 people.
- Do not use this item if any components are missing or damaged.
- Dispose of all packaging carefully and responsibly.

## Assembly Tips

- Please read the instruction manual carefully to understand the matters needing attention in the process of installation and maintenance.
- Strictly follow the assembly instructions.
- Carefully check whether the parts in the box are intact.
- Assemble on the box so as not to damage the product and room floor.
- The use of mismatched parts may cause damage to the product. Please confirm the model of various parts before assembly.

# COMPONENTS



A. Front Wooden Pole

B. Front Horizontal Wooden Pole

C. Back Wooden Pole

D. Back Horizontal Wooden Pole

E. Top Shelf

F. Middle Shelf

G. Bottom Shelf

J. Hexagon Wrench

K. Nut

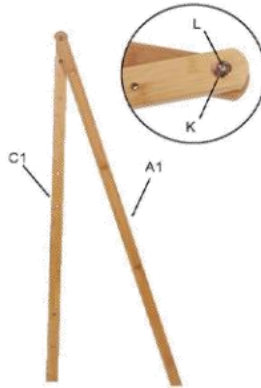
L. Hexagon Socket Screw

M. Self-tapping Screw

# INSTALLATION

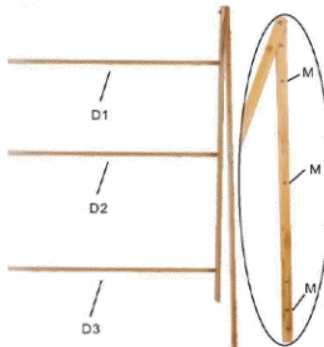
## Step 1

Install front wooden pole (A1) and back wooden pole (C1) together with hexagon socket screw (L).



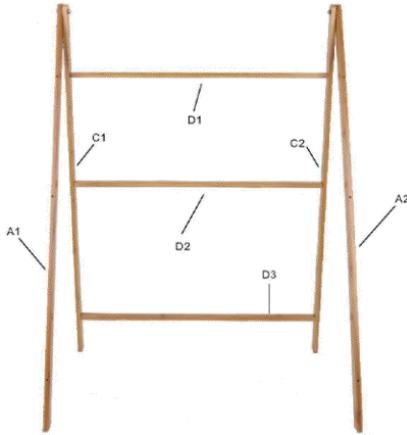
## Step 2

Install back horizontal wooden poles (D1, D2 and D3) respectively on the first, third and fifth holes of back wooden pole (C1), fix them with self-tapping screws (M).



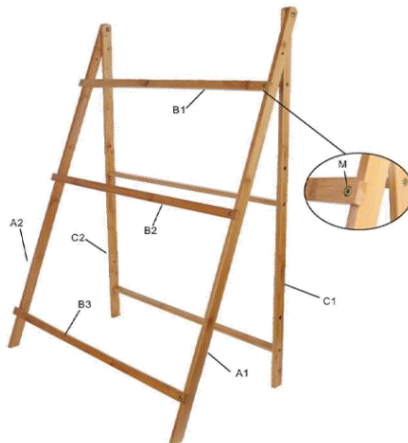
### Step 3

Install back wooden pole (C2), front wooden pole (A2), and connect them to the previous installation steps.



### Step 4

Install front horizontal wooden poles (B1, B2 and B3) on the front wooden poles (A1, A2) vertically.



## Step 5

Place the plant shelf in order top shelf (E) / middle shelf (F) / bottom shelf (G).



# CLEANING & CARE

- Only clean using a damp cloth and mild detergent, do not use bleach or abrasive cleaners.
- Regularly check all fastenings to ensure that they properly tightened.
- This product should not be discarded with household waste. Take to your local authority waste disposal centre.

## **Living and Home**

### **A Home is for Living in**

For comfort and style update your living space.

Browse contemporary and classic designs and find the perfect home to your look and the perfect spot to lounge.

Put your feet up and sink into our stylish home decor.

We are mainly engaged in home, outdoor, home appliances, office, bathroom, provided high quality and affordable products for you. We value every one of our customers and our professional service team is always available to help you.

[livingandhome.co.uk](http://livingandhome.co.uk)