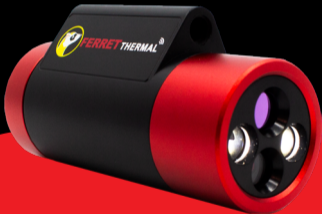




# **FERRET THERMAL**

Thermal Wireless Inspection Camera

## **USER GUIDE AND FAQs**



**ENHANCE YOUR REACH. EXTEND YOUR VISION.**

Model: T1-0919D  
Version 2.0 © 2025

   @FerretTools  
[www.ferrettools.com](http://www.ferrettools.com)

**Welcome to the Ferret Community!**  
**Thank you for choosing the Ferret Thermal camera**



**Share on social**   

The Ferret community would love to see how the Ferret is being used on the job or at home and how the Ferret has come to your rescue!

Please share and tag us on social.

Follow us on **@FerretTools**  
Official hashtag **#FerretTools**



**Designed and Engineered  
in New Zealand by:**

Ferret Tools Limited

**US Patent D909449**  
[ferrettools.com/ip](http://ferrettools.com/ip)

**Ferret Thermal**  
Model T1-0919D  
Version 2.0 © 2025

**2 yr Manufacturer's Warranty**  
[www.ferrettools.com](http://www.ferrettools.com)

Engineered and Assembled  
in New Zealand

## FERRET THERMAL FEATURES:



### Beyond Handheld

Able to view thermal imaging without being restricted to handheld use.

Easily attachable to rods or poles for extended reach, making it ideal for hard-to-reach locations, while also offering handheld usability for maximum flexibility.



### Superior Image Modes

The Ferret app provides a greater range of thermal colour palettes and image modes, including thermal only, visible only, and thermal overlay, enhancing functionality.



### Free iOS and Android App

Wirelessly link to your smartphone to easily save and share photos and videos.



### Ferret Versatility

Perfect for an extensive range of applications, including electrical, home inspections, HVAC, building inspections, plumbing, chimney inspections, pest inspections, and more.



### Wireless and Rechargeable

Designed for convenience and ease of use, the Ferret Thermal camera is fully wireless and rechargeable.

The new **Ferret Thermal** wireless inspection camera gives you extended reach for thermal vision that is not limited by handheld and can be attached to a Ferret Stick or glow rod to see more and do more. Identify problems quickly and easily. Ferret Tools offers the latest innovation in inspection camera solutions.

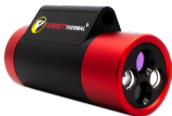
**Discover the full Ferret Tools product range at [www.ferrettools.com](http://www.ferrettools.com)**

## FERRET THERMAL SPECIFICATIONS:

*\*Subject to change without notice*

<b>Built-in WiFi Hotspot</b>	<input checked="" type="checkbox"/>
<b>Dual Infrared &amp; Visible Lens</b>	<input checked="" type="checkbox"/>
<b>Thermal Resolution</b>	160 x 120
<b>Free App</b>	iOS and Android
<b>Thermal Pixels</b>	19,200
<b>Visible Resolutions</b>	720p
<b>White LEDs</b>	Two
<b>Temperature Range</b>	-10°C to +400°C (14°F to 752°F)
<b>Thermal Sensitivity</b>	<50 mK
<b>Thermal Spectral Range</b>	Longwave Infrared, 8 $\mu$ m to 14 $\mu$ m
<b>Frames per Second</b>	9Hz
<b>Sensor</b>	FLIR Lepton Sensor
<b>Lens Type</b>	K9 Glass and Germanium Lenses
<b>Emissivity</b>	Variable via App
<b>Battery Life</b>	2 hours
<b>Recharge Time</b>	95% charge in 1.5 hours
<b>Camera Size</b>	75mm x 40mm (2.95" x 1.58")
<b>Camera Weight</b>	57g (1.98 oz)

## FERRET THERMAL KIT INCLUDES:



Ferret Thermal IP67-rated camera  
with back cap screwed on



Padded EVA Case



USB cable



Flexible gooseneck



Thread adaptors



Spare O-rings

## FERRET THERMAL FEATURES:

### Front View

Screw in Ferret accessories

Flir Lepton 3.5 thermal sensor



Camera lens

Adjustable bright white LEDs

### Rear View

Connect to a rod or pole or gooseneck

Power switch



Power Indication LED

USB-C Charging socket

Camera is waterproof only when the back cap is screwed on



Charging Indication Led

# FERRET THERMAL FEATURES:



## 1 Download the Free Ferret App



Scan the QR Code or search for “Ferret Thermal”



Requires iOS  
V9.0 or later



Requires Android  
V6.0 or later



**NOTE:** During installation or first use of the app you must give access to the phone or tablet's photo gallery to allow you to save photos and video footage.

## 2 Connect to your Ferret Camera

Turn on your Ferret camera. The camera power switch is at the back of the camera under the back cap. The camera will take about 2 seconds to boot and power on.



**NOTE:** The camera is IP67 rated only when the back cap is in place.



On your phone or tablet, turn on WiFi and search for the **Ferret-Thermal-XXXX SSID** in the WiFi list. The Ferret camera has a built in WiFi hotspot, so no other WiFi network is needed.

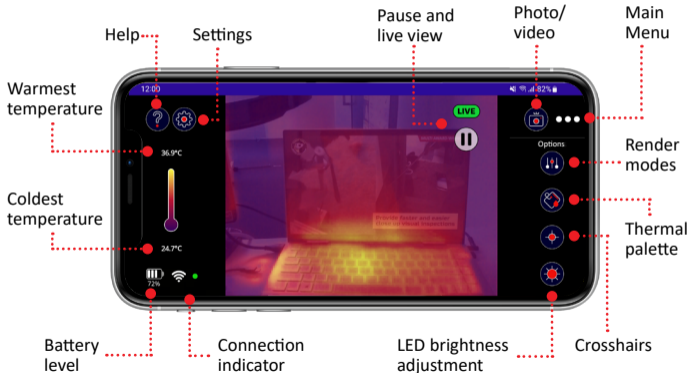
**NOTE:** The camera will not link via Bluetooth – it is WiFi only.

## 3 Enjoy using your Ferret Camera and start saving time & money, working safer & smarter.

# MAIN MENU



Click on the three dots to go to the main menu.



## PAUSE AND LIVE VIEW

LIVE



PAUSED



The view is paused while the camera is still connected

OFFLINE



The camera is not connected to your device

LIVE

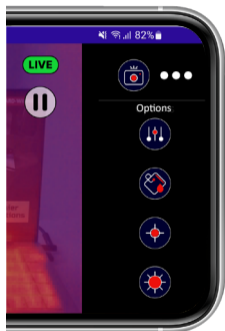
Good connection

LIVE

Fair connection

LIVE

Poor connection



The Ferret app allows you to pause the image to adjust it and take a photo if need be.

## PHOTO AND VIDEO

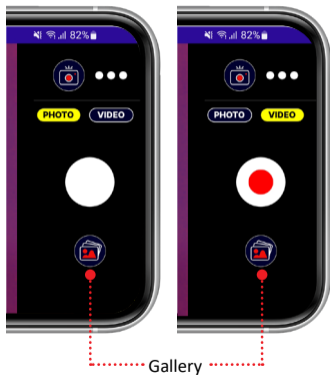


Take photos and videos direct to your smart device.

Photos and videos are saved on your gallery.

All photos are saved with thermography data.

You can view the photos via the Ferret Thermal app gallery. To view the videos recorded, go to your device gallery and look for the Ferret Thermal folder.



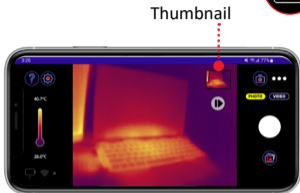
## PHOTO AND VIDEO



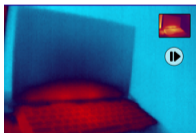
Click on the Gallery and select the photo to review.

The Ferret Thermal app allows you to apply different color palettes on the photo or change the render mode.

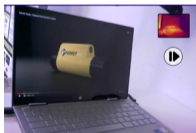
To revert to the original photo, click on the thumbnail above the Play/Live button.



*Original photo*



*Photo on Blue and Red thermal palette*

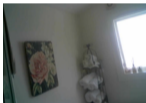
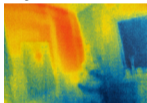


*Photo on Visible Render mode*

## RENDER MODES



The Ferret Thermal allows you to select from three different modes: **Visible**, **Thermal**, and **Combined** view modes. Use the slider to make further adjustments.



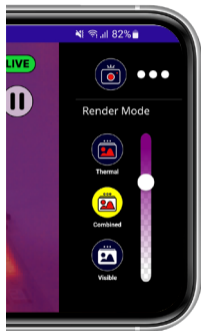
Thermal  
Mode



Combined  
Mode



Visible  
Mode

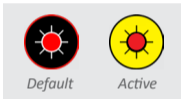


## LED BRIGHTNESS ADJUSTMENT

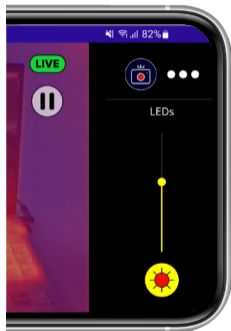


The Ferret App allows you to easily adjust the LED brightness on your camera.

1. Tap the LED Brightness button and adjust the slider to make the LED brighter.



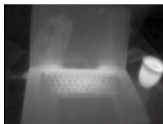
2. Press the LED Brightness Adjustment button. A slider appears below the button which you can slide up or down to adjust LED brightness.




# THERMAL PALETTE SELECTION



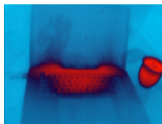
A variety of color palettes to choose from to suit your preference.



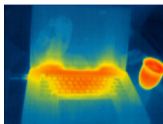
 White Hot



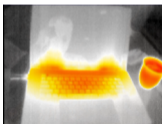
 Violet Yellow




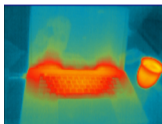
 Blue Red




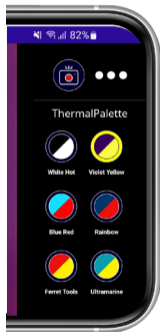
 Rainbow



 Ferret Tools



 Ultramarine



## IMAGE ALIGNMENT

Click on Settings button  
to go to Image Alignment



Adjust the alignment  
using the arrows

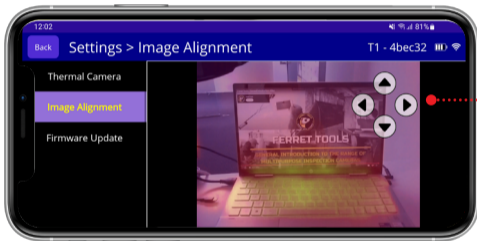


Image alignment allows for more accurate thermal inspections. You'll need to adjust the image alignment for the distance you're viewing as this will change due to parallax.

 **FAQs****I can't connect or see the camera when I search on Bluetooth?**

The Ferret camera has a built in WiFi hotspot. No other network is needed, and the camera does not connect via Bluetooth.

**Can I use the camera underground, underwater or inside a conduit?**

The Ferret Thermal camera will not work underground, underwater or inside a metallic conduit as these scenarios will block the WiFi signal.

**How long can I use my Ferret before recharging the battery?**

Your Ferret will give you up to 2 hours of use, with the LEDs on normal brightness, before it needs recharging.

**iPhone pop up shing "You don't appear to be connected to the internet"**

Your smart device incorrectly thinks that all WiFi devices are connected to the internet. Tap on Use Cellular Data.

If your question isn't covered by the FAQs, please refer to [ferrettools.com/support](https://ferrettools.com/support) or email us at [support@ferrettools.com](mailto:support@ferrettools.com)



# FERRET WARRANTY



**Your FERRET comes with a 2-year replacement warranty.**

In the unlikely event that your FERRET develops a fault within 2 years of purchase, please email [support@ferrettools.com](mailto:support@ferrettools.com), or simply return it to your place of purchase with proof of purchase.

Failure due to physical damage, misuse, neglect, improper use or moisture is not covered. The camera has no user serviceable parts inside. Disassembly will void the warranty.

## **Important Information – Li-Ion Batteries**

The Ferret camera contains a Li-Ion battery. For optimal battery life, do not store the camera while the battery is flat, do not store the camera in temperatures of over 35°C (95°F) and if the camera is not being used, top up the charge every 6 months.

**CAUTION:** Risk of explosion if the battery is replaced by an incorrect type. Disposal of a battery into fire or a hot oven, or mechanically crushing or cutting of a battery, that can result in an explosion; leaving a battery in an extremely high temperature surrounding environment that can result in an explosion or the leakage of a flammable liquid or gas; a battery subjected to extremely low air pressure that may result in an explosion or the leakage of flammable liquid or gas.

 **CAUTION**

This equipment has been tested and found to comply with the limits for a Class B digital device, pursuant to part 15 of the FCC rules. These limits are designed to provide reasonable protection against harmful interference in a residential installation. This equipment generates uses and can radiate radio frequency energy and, if not installed and used in accordance with the instructions, may cause harmful interference to radio communications. However, there is no guarantee that interference will not occur in a particular installation. If this equipment does cause harmful interference to radio or television reception, which can be determined by turning the equipment off and on, the user is encouraged to try to correct the interference by one or more of the following measures:

- Reorient or relocate the receiving antenna.
- Increase the separation between the equipment and receiver.
- Connect the equipment into an outlet on a circuit different from that to which the receiver is connected.
- Consult the dealer or an experienced radio/TV technician for help.

This device complies with part 15 of the FCC rules. Operation is subject to the following two conditions: (1) This device may not cause harmful interference, and (2) this device must accept any interference received, including interference that may cause undesired operation.

Any Changes or modifications not expressly approved by the party responsible for compliance could void the user's authority to operate the equipment.

**RF Exposure**

The equipment complies with FCC radiation exposure limits set forth for an uncontrolled environment. This device should be installed and operated with minimum distance 0mm between the radiator & your body.