



THERMOTEC NEO INVERTER SWIMMING POOL HEAT PUMP UNIT

Installation & Instruction Manual



Version 3.0



CONTENTS

1. Preface	1
2. Specifications	4
2.1 Performance Data of Swimming Pool Heat Pump Unit	4
2.2 Dimensions for Swimming Pool Heat Pump Unit	8
3. Installation and Connection	10
3.1 Installation illustration	10
3.2 Swimming Pool Heat Pumps Location	11
3.3 How Close to Your Pool?	11
3.4 Swimming Pool Heat Pumps Plumbing	12
3.5 Swimming Pool Heat Pumps Electrical Wiring	13
3.6 Initial Start-up of the Unit	13
4. Use and Operation Instruction	14
4.1 Interface display	14
4.2 Key and icon function instruction	14
4.3 Startup & shutdown	16
4.4 Mode switch	16
4.5 Temperature setting	17
4.6 Clock setting	18
4.7 Mute setting	20
4.8 Keyboard lock	21
4.9 Fault interface	21
4.10 Parameter list and breakdown table	22
4.11 Interface drawing	24
5. Maintenance and Inspection	31
6. Appendix	36
6.1 Cable specification	36
6.2 Comparison table of refrigerant saturation temperature	37
6.3 Explosive view of the unit	38

1. PREFACE

- In order to provide our customers with quality, reliability and versatility, this product has been made to strict production standards. This manual includes all the necessary information about installation, debugging, discharging and maintenance. Please read this manual carefully before you open or maintain the unit. The manufacture of this product will not be held responsible if someone is injured or the unit is damaged, as a result of improper installation, debugging, or unnecessary maintenance. It is vital that the instructions within this manual are adhered to at all times. The unit must be installed by qualified personnel.
- The unit can only be repaired by qualified installer centre, personnel or an authorised dealer.
- Maintenance and operation must be carried out according to the recommended time and frequency, as stated in this manual.
- Use genuine standard spare parts only.
Failure to comply with these recommendations will invalidate the warranty.
- Swimming Pool Heat Pump Unit heats the swimming pool water and keeps the temperature constant. For split type unit, The indoor unit can be discretely hidden or semi-hidden to suit a luxury house.

Our heat pump has following characteristics:

1 Durable

The heat exchanger is made of PVC & Titanium tube which can withstand prolonged exposure to swimming pool water.

2 Installation flexibility

The unit can be installed outdoors.

3 Quiet operation

The unit comprises an efficient rotary/ scroll compressor and a low-noise fan motor, which guarantees its quiet operation.

4 Advanced controlling

The unit includes micro-computer controlling, allowing all operation parameters to be set. Operation status can be displayed on the LCD wire controller. Remote controller can be chosen as future option.

● WARNING

Do not use means to accelerate the defrosting process or to clean, Other than those recommended by the manufacturer.

The appliance shall be stored in a room without continuously operating ignition sources (for example: open flames, an Operating gas appliance or an operating electric heater.)

Do not pierce or burn.

Be aware that refrigerants may not contain an odour,

Appliance shall be installed, operated and stored in a room with a floor area larger than Xm^2 .

NOTE The manufacturer may provide other suitable examples or may provide additional information about the refrigerant odour.



1. PREFACE

- This appliance can be used by children aged from 8 years and above and persons with reduced physical, sensory or mental capabilities or lack of experience and knowledge if they have been given supervision or instruction concerning use of the appliance in a safe way and understand the hazards involved. Children shall not play with the appliance. Cleaning and user maintenance shall not be made by children without supervision.
- If the supply cord is damaged, it must be replaced by the manufacturer, its service agent or similarly qualified persons in order to avoid a hazard.
- The appliance shall be installed in accordance with national wiring regulations.
- Do not operate your air conditioner in a wet room such as a bathroom or laundry room.
- Before obtaining access to terminals, all supply circuits must be disconnected.
- An all-pole disconnection device which has at least 3mm clearances in all poles, and have a leakage current that may exceed 10mA, the residual current device (RCD) having a rated residual operating current not exceeding 30mA, and disconnection must be incorporated in the fixed wiring in accordance with the wiring rules.
- Do not use means to accelerate the defrosting process or to clean, other than those recommended by the manufacturer
- The appliance shall be stored in a room without continuously operating ignition sources (for example: open flames, an operating gas appliance or an operating electric heater.)
- Do not pierce or burn
- Appliance shall be installed, operated and stored in a room with a floor area larger than 30 m²
Be aware that refrigerants may not contain an odour.
The installation of pipe-work shall be kept to a minimum 30 m²
Spaces where refrigerant pipes shall be compliance with national gas regulations.
Servicing shall be performed only as recommended by the manufacturer.
The appliance shall be stored in a well-ventilated area where the room size corresponds to the room area as specified for operation.
All working procedure that affects safety means shall only be carried by competent persons.
- Transport of equipment containing flammable refrigerants
Compliance with the transport regulations
Marking of equipment using signs
Compliance with local regulations
Disposal of equipment using flammable refrigerants
Compliance with national regulations
Storage of equipment/appliances
The storage of equipment should be in accordance with the manufacturer's instructions.
Storage of packed (unsold) equipment
Storage package protection should be constructed such that mechanical damage to the equipment inside the package will not cause a leak of the refrigerant charge.
The maximum number of pieces of equipment permitted to be stored together will be determined by local regulations.

1. PREFACE

Caution & Warning

1. The unit can only be repaired by qualified installer centre personnel or an authorised dealer. (for Europe market)
2. This appliance is not intended for use by persons (including children) with reduced physical sensory or mental capabilities, or lack of experience and knowledge, unless they have been given supervision or instruction concerning use of the appliance by a person responsible for their safety. (for Europe market)
Children should be supervised to ensure that they do not play with the appliance.
3. Please make sure that the unit and power connection have good earthing, otherwise may cause electrical shock.
4. If the supply cord is damaged, it must be replaced by the manufacturer or our service agent or similarly qualified person in order to avoid a hazard.
5. Directive 2002/96/EC (WEEE):
The symbol depicting a crossed-out waste bin that is underneath the appliance indicates that this product, at the end of its useful life, must be handled separately from domestic waste, must be taken to a recycling centre for electric and electronic devices or handed back to the dealer when purchasing an equivalent appliance.
6. Directive 2002/95/EC (RoHs): This product is compliant with directive 2002/95/EC (RoHs) concerning restrictions for the use of harmful substances in electric and electronic devices.
7. The unit CANNOT be installed near the flammable gas. Once there is any leakage of the gas , fire can be occur.
8. Make sure that there is circuit breaker for the unit, lack of circuit breaker can lead to electrical shock or fire.
9. The heat pump located inside the unit is equipped with an over-load protection system. It does not allow for the unit to start for at least 3 minutes from a previous stoppage.
10. The unit can only be repaired by the qualified personnel of an installer center or an authorized dealer. (for North America market)
11. Installation must be performed in accordance with the NEC/CEC by authorized person only. (for North America market)
12. USE SUPPLY WIRES SUITABLE FOR 75°C.
13. Caution: Single wall heat exchanger, not suitable for potable water connection.

2.SPECIFICATION

2.1 Performance data of Swimming Pool Heat Pump Unit

*** REFRIGERANT : R32

UNIT		Thermotec Neo 5.4kW	Thermotec Neo 7kW
Heating capacity (27/24.3℃)	kW	2.00-5.40	2.00-7.00
	Btu/h	6820-18420	6820-23880
Heating Power Input	kW	0.20-0.87	0.20-1.21
COP		10.2-6.2	10.2-5.8
Heating capacity (15/12℃)	kW	1.10-3.80	1.10-5.00
	Btu/h	3750-12970	3750-17060
Heating Power Input	kW	0.18-0.88	0.18-1.25
COP		6.0-4.32	6.0-4.0
Heating capacity (10/6.8℃)	kW	1.30-3.50	1.30-4.60
	Btu/h	4440-11940	4440-15700
Heating Power Input	kW	0.26-0.91	0.26-1.28
COP		5.0-3.8	5.0-3.6
Power Supply		220-240V~/50Hz	
Compressor Quantity		1	
Compressor		rotary	
Fan Number		1	
Noise	dB(A)	38-46	38-47
Water Connection	mm	50	50
Water Flow Volume	m ³ /h	2.3	3.0
Water Pressure Drop(max)	kPa	1.8	1.8
Unit Net Dimensions(L/W/H)	mm	934*360*611	934*360*611
Unit Ship Dimensions(L/W/H)	mm	970*410*630	970*410*630
Net Weight	kg	39KG	39KG
Shipping Weight	kg	51KG	51KG

Heating: Outdoor air temp: 27℃/24.3℃, Inlet watertemp:26℃

Outdoor air temp: 15℃/12℃, Inlet water temp:26℃

Outdoor air temp: 10℃/6.8℃, Inlet water temp:26℃

Operating range:

Ambient temperature:-7—43℃

Water temperature:9-40℃

2.SPECIFICATION

2.1 Performance data of Swimming Pool Heat Pump Unit

*** REFRIGERANT : R32

UNIT		Thermotec Neo 9kW	Thermotec Neo 11.5kW
Heating capacity (27/24.3℃)	kW	2.40-9.00	2.56-11.50
	Btu/h	8190-30700	8730-39240
Heating Power Input	kW	0.24-1.55	0.246-1.920
COP		10.0-5.8	10.4-6.0
Heating capacity (15/12℃)	kW	1.20-6.50	1.50-8.50
	Btu/h	4090-22180	5120-29000
Heating Power Input	kW	0.20-1.57	0.24-1.97
COP		6.0-4.1	6.2-4.3
Heating capacity (10/6.8℃)	kW	1.56-5.90	1.66-7.50
	Btu/h	5320-20130	5660-25590
Heating Power Input	kW	0.31-1.64	0.33-1.97
COP		5.0-3.6	5.0-3.8
Power Supply		220-240V~/50Hz	
Compressor Quantity		1	
Compressor		rotary	
Fan Number		1	
Noise	dB(A)	38-48	38-48
Water Connection	mm	50	50
Water Flow Volume	m ³ /h	4.0	4.7
Water Pressure Drop(max)	kPa	2.8	2.7
Unit Net Dimensions(L/W/H)	mm	934*360*611	934*360*611
Unit Ship Dimensions(L/W/H)	mm	970*410*630	970*410*630
Net Weight	kg	41KG	41KG
Shipping Weight	kg	53KG	53KG

Heating: Outdoor air temp: 27℃/24.3℃, Inlet watertemp:26℃

Outdoor air temp: 15℃/12℃, Inlet watertemp:26℃

Outdoor air temp: 10℃/6.8℃, Inlet water temp:26℃

Operating range:

Ambient temperature:-7—43℃

Water temperature:9-40℃

2.SPECIFICATION

2.1 Performance data of Swimming Pool Heat Pump Unit

*** REFRIGERANT : R32

UNIT		Thermotec Neo 13.2kW	Thermotec Neo 15.5kW
Heating capacity (27/24.3℃)	kW	3.20-13.20	4.05~15.5
	Btu/h	10918-45038	13818-52886
Heating Power Input	kW	0.31-2.28	0.40-2.63
COP		10.3-5.8	10.1-5.6
Heating capacity (15/12℃)	kW	1.78-9.95	2.20-11.40
	Btu/h	6073-33949	7506-38896
Heating Power Input	kW	0.29-2.26	0.35-2.59
COP		6.2-4.4	6.2-4.4
Power Supply		220-240V~/50Hz	
Compressor Quantity		1	
Compressor		rotary	
Fan Number		1	
Noise	dB(A)	39-51	40-52
Water Connection	mm	50	50
Water Flow Volume	m ³ /h	5.2	6.3
Water Pressure Drop(max)	kPa	3.0	6.0
Unit Net Dimensions(L/W/H)	mm	934*360*611	1047.5*453*770.5
Unit Ship Dimensions(L/W/H)	mm	970*410*630	1130*480*780
Net Weight	kg	44KG	60KG
Shipping Weight	kg	56KG	73KG

Heating: Outdoor air temp: 27℃/24.3℃, Inlet water temp:26℃

Outdoor air temp: 15℃/12℃, Inlet water temp:26℃

Operating range:

Ambient temperature:-7—43℃

Water temperature:9-40℃

2.SPECIFICATION

2.1 Performance data of Swimming Pool Heat Pump Unit

*** REFRIGERANT : R32

UNIT		Thermotec Neo 18.4kW	Thermotec Neo 24kW
Heating capacity (27/24.3℃)	kW	4.38~18.40	4.70~24.00
	Btu/h	14944-62780	16036~81888
Heating Power Input	kW	0.44-3.17	0.36~4.00
COP		10.0-5.8	13.00~6.00
Heating capacity (15/12℃)	kW	2.40-13.80	4.40~18.50
	Btu/h	8188-47085	15012~63122
Heating Power Input	kW	0.39-3.07	0.611~4.021
COP		6.10-4.5	7.20~4.60
Power Supply		220-240V~/50Hz	
Compressor Quantity		1	
Compressor		rotary	
Fan Number		1	
Noise	dB(A)	42-53	45-56
Water Connection	mm	50	50
Water Flow Volume	m ³ /h	7.5	10.0
Water Pressure Drop(max)	kPa	6.0	14.0
Unit Net Dimensions(L/W/H)	mm	1047.5×453×770.5	1161×490×865
Unit Ship Dimensions(L/W/H)	mm	1130×480×780	1210×510×880
Net Weight	kg	60KG	90KG
Shipping Weight	kg	73KG	102KG

Heating: Outdoor air temp: 27℃/24.3℃, Inlet water temp:26℃

Outdoor air temp: 15℃/12℃, Inlet water temp:26℃

Operating range:

Ambient temperature:-7—43℃

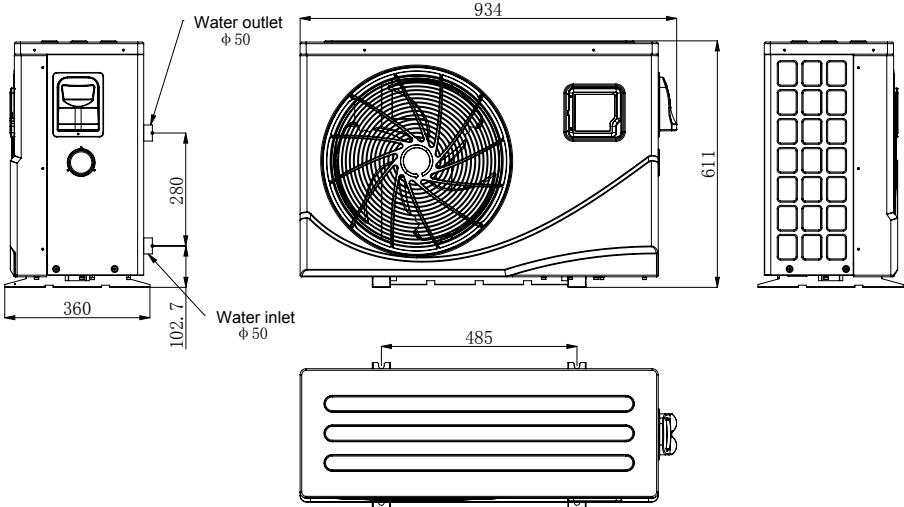
Water temperature:9-40℃

2.SPECIFICATION

2.2 The dimensions for Swimming Pool Heat Pump Unit

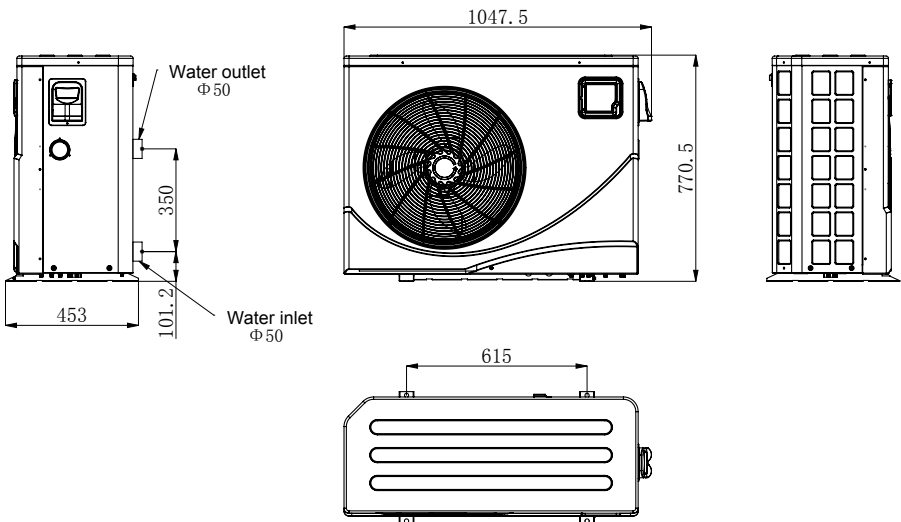
Model: Thermotec Neo 5.4kW/7kW/9kW/11.5kW/13.2kW

unit:mm



Model: Thermotec Neo 15.5kW/18.4kW

unit:mm

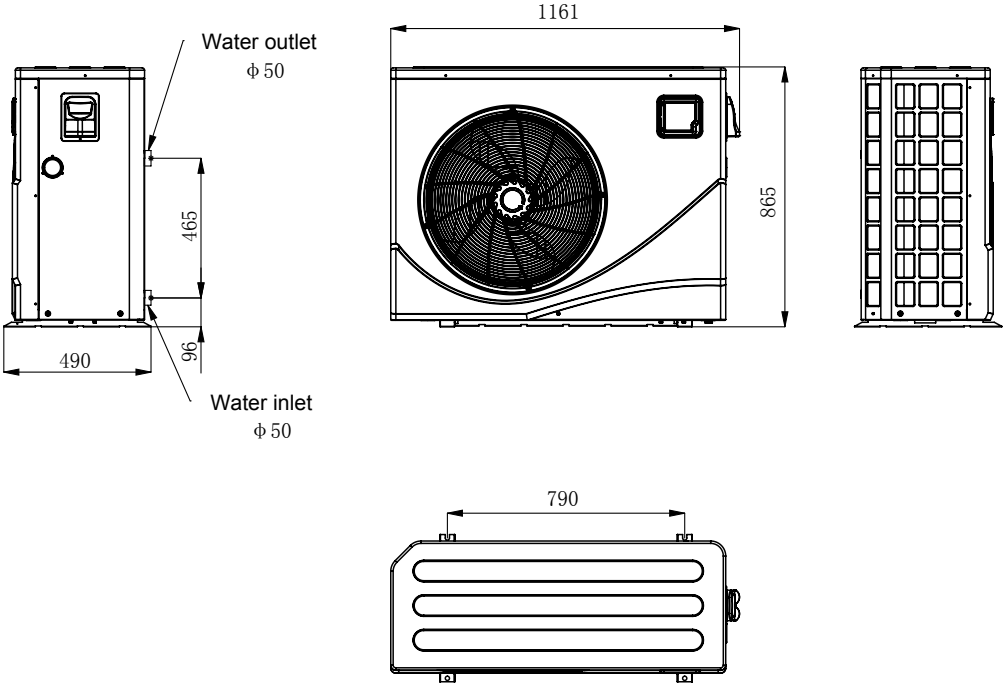


2. SPECIFICATION

2.2 The dimensions for Swimming Pool Heat Pump

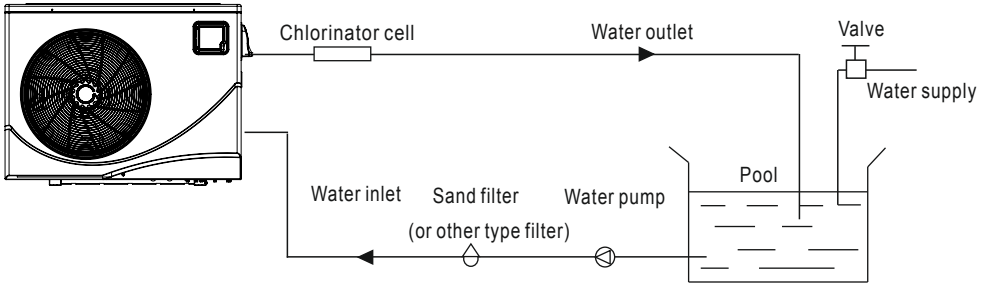
Unit Model: Thermotec Neo 24kW

unit:mm



3.INSTALLATION AND CONNECTION

3.1 Installation illustration



Installation items:

The factory only provides the heat pump and the water unit; the other items in the illustration are necessary parts for the water system, that provided by users or the installer.

Attention:

Please follow these steps when using for the first time

- 1.Fill the pool with water
- 2.Prime the circulation pump and turn it on to allow pool water to flow through the heat pump
- 3.Turn on the power to the heat pump
- 4.Turn on the heat pump and set the desired water temperature

The schematic diagram is for reference only. Please check the water inlet/outlet label on the heat pump while plumbing installation.

3. INSTALLATION AND CONNECTION

3.2 Swimming Pool Heat Pumps Location

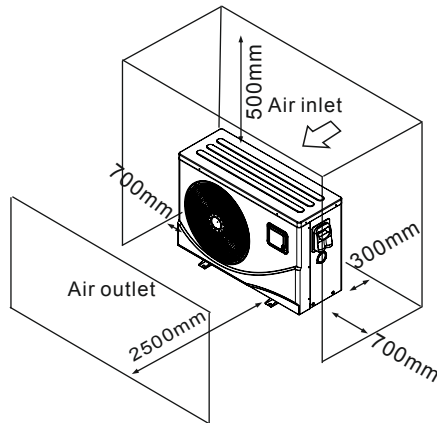
The unit will perform well in any outdoor location provided that the following three factors are presented:

1. Fresh Air
2. Electricity
3. Pool filter piping

The unit may be installed virtually anywhere outdoors. For indoor pools please consult the supplier. Unlike a gas heater, it has no draft or pilot light problem in a windy area.

DO NOT place the unit in an enclosed area with a limited air volume, where the units discharge air will be re-circulated.

DO NOT place the unit to shrubs which can block air inlet. These locations deny the unit of a continuous source of fresh air which reduces its efficiency and may prevent adequate heat delivery.



3.3 How Close To Your Pool?

Normally, the pool heat pump is installed within 7.5 metres of the pool. The longer the distance from the pool, the greater the heat loss from the piping. For the most part, the piping is buried. Therefore, the heat loss is minimal for runs of up to 15 meters (15 meters to and from the pump = 30 meters total), unless the ground is wet or the water table is high. A very rough estimate of heat loss per 30 meters is 0.6 kW-hour, (2000BTU) for every 5 °C difference in temperature between the pool water and the ground surrounding the pipe, which translates to about 3% to 5% increase in run time.

3.INSTALLATION AND CONNECTION

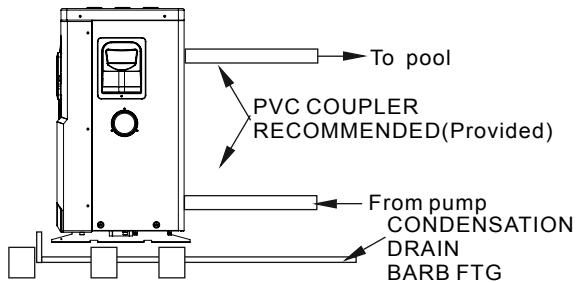
3.4 Swimming Pool Heat Pumps Plumbing

The Swimming Pool Heat Pumps exclusive rated flow titanium heat exchanger requires no special plumbing arrangements except bypass(please set the flow rate according to the nameplate). The water pressure drop is less than 10kPa at max. Flow rate. Since there is no residual heat or flame Temperatures, The unit does not need copper heat sink piping. PVC pipe can be run straight into the unit.

Location: Connect the unit in the pool pump discharge (return) line downstream of all filter and pool pumps, and upstream of any chlorinators, ozonators or chemical pumps.

Standard model have slip glue fittings which accept 32mm or 50 mm PVC pipe for connection to the pool or spa filtration piping. By using a 50 NB to 40NB you can plumb 40NB

Give serious consideration to adding a quick coupler fitting at the unit inlet and outlet to allow easy draining of unit for winterizing and to provide easier access should servicing be required.



Condensation: Since the Heat pump cools down the air about 4 -5_i, water may condense on the fins of the horseshoe shaped evaporator. If the relative humidity is very high, this could be as much as several litres an hour. The water will run down the fins into the basepan and drain out through the barbed plastic condensation drain fitting on the side of the basepan. This fitting is designed to accept 20mm clear vinyl tubing which can be pushed on by hand and run to a suitable drain. It is easy to mistake the condensation for a water leak inside the

NB: A quick way to verify that the water is condensation is to shut off the unit and keep the pool pump running. If the water stops running out of the basepan, it is condensation. AN EVEN QUICKER WAY IS to TEST THE DRAIN WATER FOR CHLORINE - if there is no chlorine present, then it's condensation.

3. INSTALLATION AND CONNECTION

3.5 Swimming Pool Heat Pumps Electrical Wiring

NOTE: Although the heat exchanger inside the heat pump is electrically isolated from the rest of the unit, earthing the unit is still required to protect you against short circuits.

The unit has a separate molded-in junction box with a standard electrical rubber grommet for cable access. Just remove the screw and the access panel and feed your power cable in through the grommet and secure the wires under screw connections for Live, Neutral and Earth. To complete the electrical hookup, connect heat pump using suitably sized cable. The unit should be wired back to a dedicated power breaker in the consumer unit equipped with the proper RCD circuit breaker

Disconnect - A disconnect means (circuit breaker , fused or un-fused switch) should be located within sight of and readily accessible from the unit, This is common practice on commercial and residential air conditioners and heat pumps. It prevents remotely-energizing unattended equipment and permits turning off power at the unit while the unit is being serviced.

3.6 Initial startup of the Unit

NOTE- In order for the unit to heat the pool or spa, the filter pump must be running to circulate water through the heat exchanger.

Start up Procedure - After installation is completed, you should follow these steps:

1. Turn on your filter pump. Check for water leaks and verify flow to and from the pool.
2. Turn on the electrical power supply to the unit, then press the key ON/OFF of wire controller, It should start in several seconds.
3. After running a few minutes make sure the air leaving the top(side) of the unit is cooler(Between 5-10 ;)
4. With the unit operating turn the filter pump off. The unit should also turn off automatically,
5. Allow the unit and pool pump to run 24 hours per day until desired pool water temperature is reached. When the water-in temperature reaches this setting, the unit will slow down for a period of time, if the temperature is maintained for 45 minutes the unit will turn off. The unit will now automatically restart (as long as your pool pump is running)when the pool temperature drops more than 0.2 below set temperature.

Time Delay- The unit is equipped with a 3 minute built-in solid state restart delay included to protect control circuit components and to eliminate restart cycling and contactor chatter. This time delay will automatically restart the unit approximately 3 minutes after each control circuit interruption. Even a brief power interruption will activate the solid state 3 minute restart delay and prevent the unit from starting until the 5 minute countdown is completed.







4. Use and Operation Instruction

1. Interface display



2. Key and icon function instruction

2.1 Key function instruction

Key symbols	Designation	Function
	Mute key	Under the heating mode or heating mode under the automatic mode, the mute key operation is effective and used to enter and exit the mute mode with one click.
	Mode key	It is used to switch the unit mode, temperature setting, and parameter setting.
	On-off key	It is used to carry out startup & shutdown, cancel current operation, and return to the last level of operation.
	Up key	It is used to page up, and increase variable value.
	Down key	It is used to page down, and decrease variable value.
	Clock key	It is used as user clock, and to carry out timing setting.

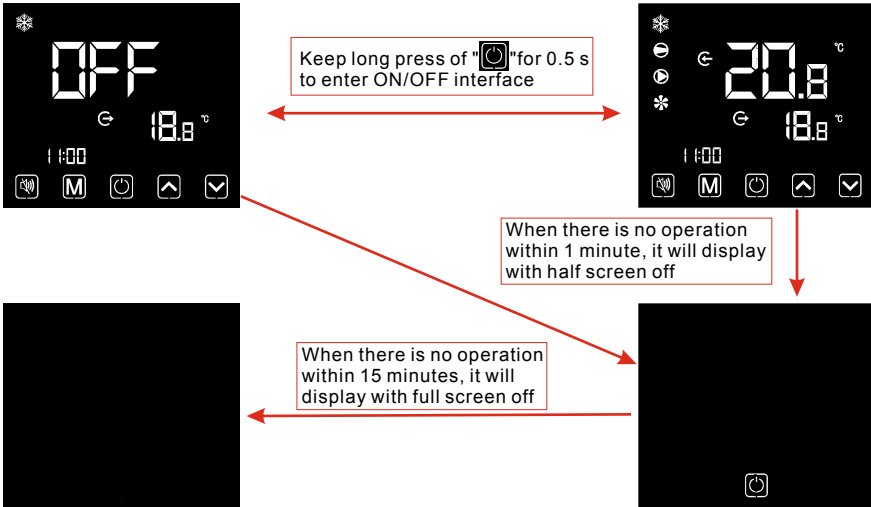
4. Use and Operation Instruction

2.2 Icon function instruction

Icon symbol	Designation	Function
	Cooling symbol	It will display during cooling (there is no limit to startup & shutdown, and it is optional when the unit is cooling-only unit or heating-and-cooling unit).
	Heating symbol	It will display during heating (there is no limit to startup & shutdown, and it is optional when the unit is heating-only unit or heating-and-cooling unit).
	Automatic symbol	It will display under the automatic mode (there is no limit to startup & shutdown, and it is optional when the unit is heating-and-cooling unit).
	Defrosting symbol	It will display in the defrosting process of the unit.
	Compressor symbol	It will display when compressor is started.
	Water pump symbol	It will display when water pump is started.
	Fan symbol	It will display when fan is started.
	Mute symbol	When the timing mute function is started, it keeps bright for a long time. When it is in mute state, it will flash. Or else, it is off.
	Timing symbol	It will display after the user sets the timing, and multiple timing intervals can be set.
	Water outlet symbol	Light up when the secondary display area shows effluent temperature
	Water inlet symbol	When the main display area displays the water inlet temperature, the light is on.
	Locking key symbol	When the keyboard is locked, it is on.
	Fault symbol	In case of unit fault, it is on.
	Wireless signal symbol	When the unit is connected to WIFI module, it will display according to the strength of WIFI signal.
	Degrees Celsius symbol	When main display area or auxiliary display area displays degrees Celsius, it is on.
	Degrees Fahrenheit symbol	When main display area or auxiliary display area displays degrees Fahrenheit, it is on.
	Setting symbol	When the parameter is adjustable, it is on
	Second symbol	When main display area displays second digit, it is on.
	Minute symbol	When main display area displays minute digit, it is on.
	Hour symbol	When main display area displays hour digit, it is on.
	Pressure symbol	When main display area displays pressure, it is on.
	Flow symbol	When main display area displays flow, it is on.

4. Use and Operation Instruction

3. Startup & shutdown



Notes:

Startup & shutdown operation can only be conducted in the main interface.

When it displays with half screen off or full screen off, click any key for returning to ON/OFF main interface.

When the unit is started under the control of wire controller, if using the emergency switch to shut down, the wire controller will display as follows:

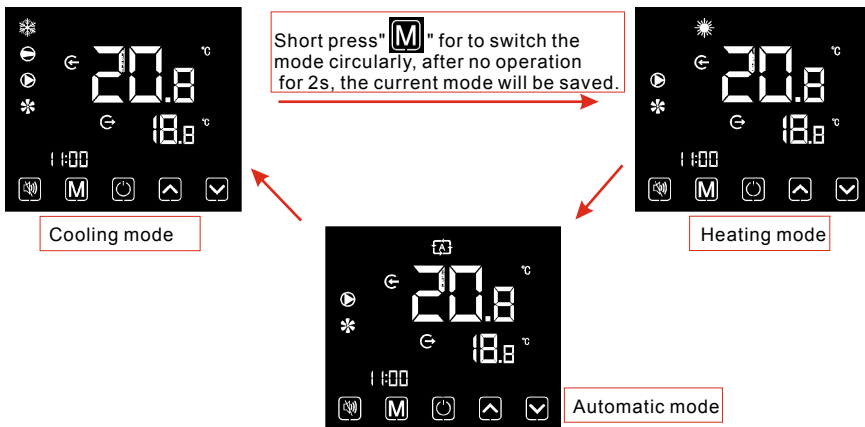
Operations are the same as under ON/OFF main interface.



4. Mode switch

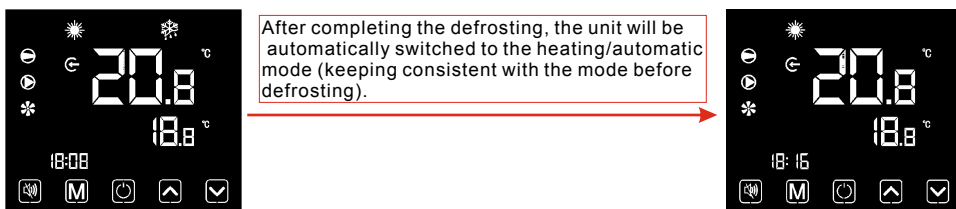
Under the main interface, short press "M" to switch the unit among heating, cooling and automatic mode.

4. Use and Operation Instruction



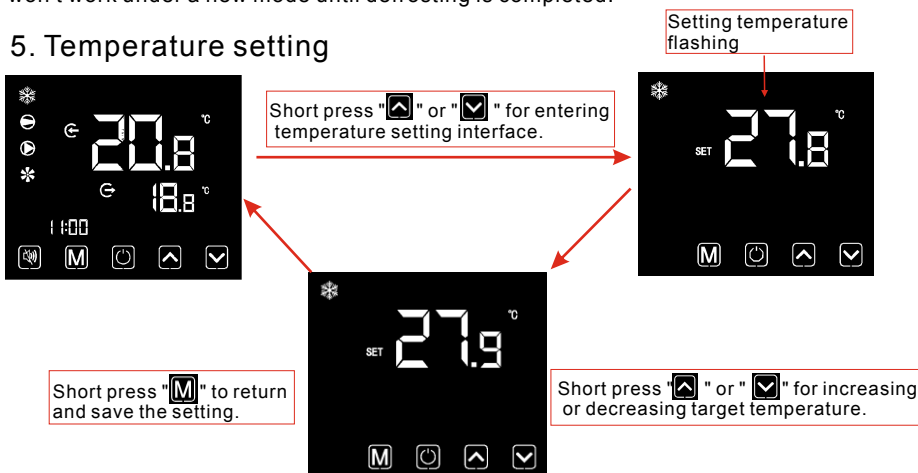
Operation descriptions:

- 1). Mode switch operation can only be conducted in the main interface.
- 2). When the unit is under the defrosting state, the defrosting symbol is on, with the display interface as follows:



Notes: During the defrosting, mode switch is available. And when switching the mode, the unit won't work under a new mode until defrosting is completed.

5. Temperature setting



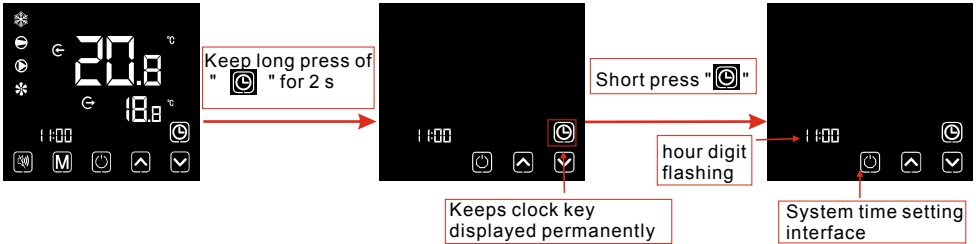
4. Use and Operation Instruction

Notes: Under the temperature setting interface, if short press "⏸", the system will return to the main interface without any changes saved; If there is no operation for 5 s, the system will automatically memorize users setting, and return to the main interface.

6. Clock setting

6.1 System time setting

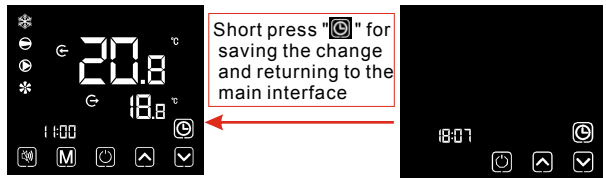
1. Permanent awakening clock key



2. Single awakening clock key



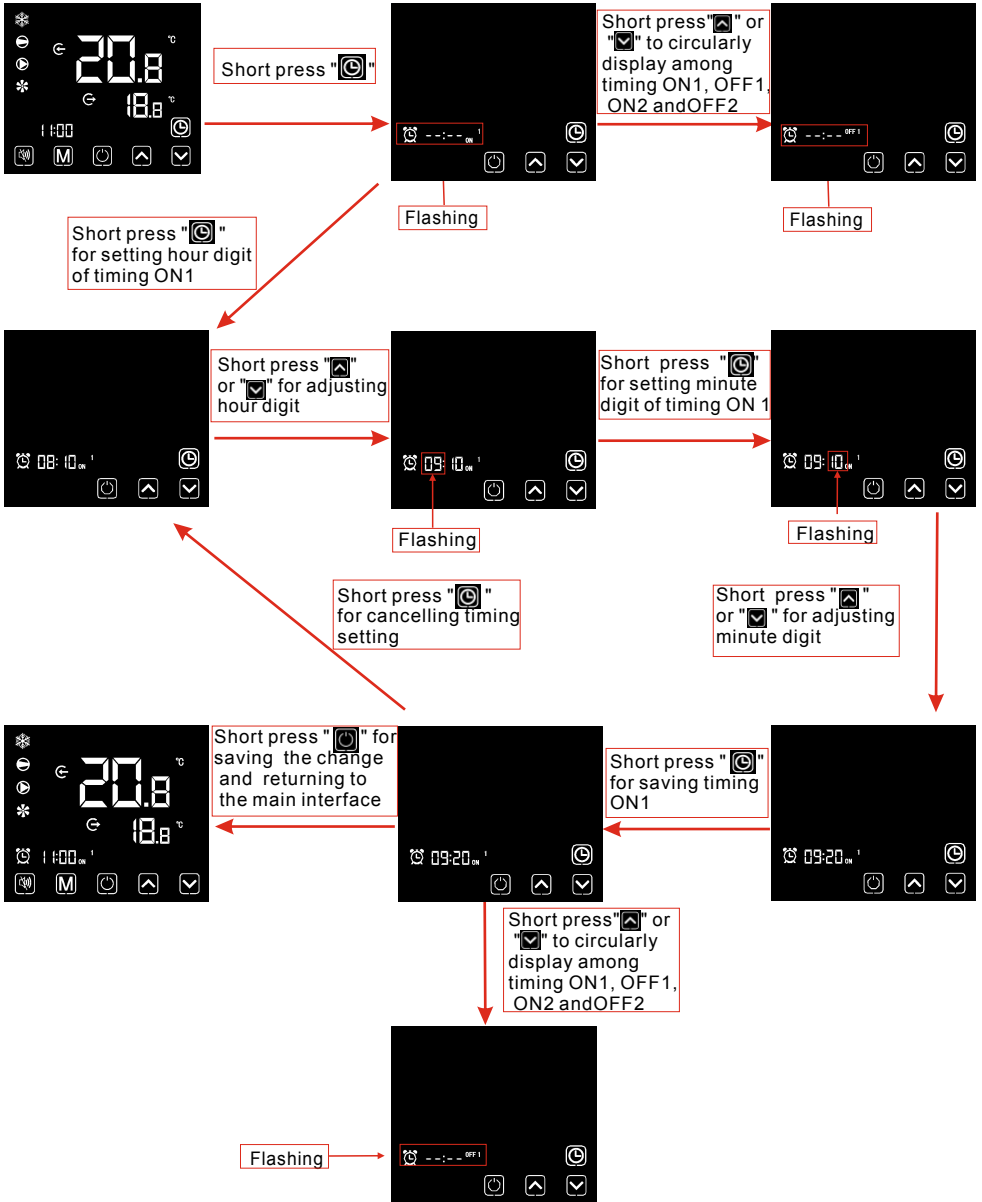
3. System time setting



Notes: After the permanent awakening of clock key, if it is not cancelled by user, the main interface will display the clock key permanently. Under the clock setting interface, if short press "⏸", the change will not be saved and return to the main interface; if there is no operation for 20s, the system will automatically memorize user's setting, and return to the main interface.

4. Use and Operation Instruction

6.2 Setting and cancellation of timing ON and OFF



Notes: If there is no operation for 20 s, the system will automatically memorize user's setting, and return to the main interface; If the timing symbol and entire time digits flash at the same time, click "C" for returning to the main interface.

4. Use and Operation Instruction

7. Mute setting

7.1 One-click mute



Notes:

- 1). If one-click mute and timing mute are started at the same time, short press " " for canceling one-click mute and quitting the timing mute for this time.
- 2). At night or the rest time, user can start one-click mute or timing mute function to reduce the noise.

7.2 Setting and cancellation of timing mute



4. Use and Operation Instruction

10 . Parameter list and breakdown table

10.1 Electronic control fault table

Can be judged according to the remote controller failure code and troubleshooting

Protect/fault	Fault display	Reason	Elimination methods
Inlet Temp. Sensor Fault	P01	The temp. sensor is broken or short circuit	Check or change the temp. sensor
Outlet Temp. Sensor Fault	P02	The temp. sensor is broken or short circuit	Check or change the temp. sensor
Ambient Temp. Sensor Fault	P04	The temp. sensor is broken or short circuit	Check or change the temp. sensor
Coil 1 Temp. Sensor Fault	P05	The temp. sensor is broken or short circuit	Check or change the temp. sensor
Coil 2 Temp. Sensor Fault	P15	The temp. sensor is broken or short circuit	Check or change the temp. sensor
Suction Temp. Sensor Fault	P07	The temp. sensor is broken or short circuit	Check or change the temp. sensor
Discharge Temp. Sensor Fault	P081	The temp. sensor is broken or short circuit	Check or change the temp. sensor
Exhaust Air Over Temp Prot.	P082	The compressor is overload	Check whether the compressor running normally
Antifreeze Temp. Sensor Fault	P09	The temp. sensor is broken or short circuit	Check or change the temp. sensor
Pressure Sensor Fault	PP	The pressure sensor is broken	Check or change the pressure sensor or pressure
High Pressure Prot.	E01	The high-pressure switch is broken	Check the pressure switch and cold circuit
Low Pressure Prot.	E02	The low-pressure switch is broken	Check the pressure switch and cold circuit
Flow Switch Prot.	E03	The temp. sensor is broken or short circuit	Check or change the temp. sensor
Waterway Anti-freezing Prot.	E05	No water/little water in water system	Check the pipe water flow and water pump
Inlet and outlet temp. too big	E06	Water flow is not enough and low differential pressure	Check the pipe water flow and whether water system is jammed or not
Anti-freezing Prot.	E07	Water flow is not enough	Check the pipe water flow and whether water system is jammed or not
Primary Anti-freezing Prot.	E19	The ambient temp. is low	Check whether the ambient temp. is low or not
Secondary Anti-freezing Prot.	E29	The ambient temp. is low	Check whether the ambient temp. is low or not
Comp. Overcurrent Prot.	E051	The compressor is overload	Check whether the system of the compressor running normally
Communication Fault	E08	Communication failure between wire controller and mainboard	Check the wire connection between remote wire controller and main board
Communication Fault(speed control module)	E081	Speed control module and main board communication fail	Check the communication connection
Low AT Protection	TP	The ambient temp. is low	Check whether the ambient temp. is low or not
EC fan feedback Fault	F051	There is something wrong with fan motor and fan motor stops running	Check whether fan motor is broken or locked or not
Fan Motor1 Fault	F031	1. Motor is in locked-rotor state 2. The wire connection between DC-fan motor module and fan motor is in bad contact	1. Change a new fan motor 2. Check the wire connection and make sure they are in good contact

4. Use and Operation Instruction

Fan Motor 2 Fault	F032	1. Motor is in locked-rotor state 2. The wire connection between DC-fan motor module and fan motor is in bad contact	1. Change a new fan motor 2. Check the wire connection and make sure they are in good contact
-------------------	------	---	--

Frequency conversion board fault table:

Protect/fault	Fault display	Reason	Elimination methods
Drv1 MOP alarm	F01	MOP drive alarm	Recovery after the 150s
Inverter offline	F02	Frequency conversion board and main board communication failure	Check the communication connection
IPM protection	F03	IPM modular protection	Recovery after the 150s
Comp. Driver Failure	F04	Lack of phase, step or drive hardware damage	Check the measuring voltage check frequency conversion board hardware
DC Fan Fault	F05	Motor current feedback open circuit or short circuit	Check the input voltage measurement
IPM Overcurrent	F06	IPM input current is too large	Check and adjust the current measurement
Inv. DC Overvoltage	F07	DC bus voltage > Dc bus Overload-voltage protection value	Check the input voltage measurement
Inv. DC Lessvoltage	F08	DC bus voltage < Dc bus Underload-voltage protection value	Check the input voltage measurement
Inv. Input Lessvolt.	F09	The input voltage is low, causing the input current is low	Check the input voltage measurement
Inv. Input Overvolt.	F10	The input voltage is too high, more than outage protection current RMS	Check the input voltage measurement
Inv. Sampling Volt.	F11	The input voltage sampling fault	Check and adjust the current measurement
Comm. Err DSP-PFC	F12	DSP and PFC connect fault	Check the communication connection
Input Over Cur.	F26	The equipment load is too large	Check the input current of the unit whether is bigger than the rate current
PFC fault	F27	The PFC circuit protection	Check the PFC switch tube short circuit or not
IPM Overheating	F15	The IPM module is overheat	Check and adjust the current measurement
Weak Magnetic Warn	F16	Compressor magnetic force is not enough	Restart the unit after multiple power failures, if the fault still exists, replace the compressor
Inv. Input Out Phase	F17	The input voltage lost phase	Check and measure the voltage adjustment
IPM Sampling Cur.	F18	IPM sampling electricity is fault	Check and adjust the current measurement
Inv. Temp. Probe Fault	F19	Sensor is short circuit or open circuit	Inspect and replace the sensor
Inverter Overheating	F20	The transducer is overheat	Check and adjust the current measurement
Inv. Overheating Warn	F22	Transducer temperature is too high	Check and adjust the current measurement
Comp. Over Cur. Warn	F23	Compressor is too large	Check and adjust the current measurement
Input Over Cur. Warn	F24	Input current is too large	Check and adjust the current measurement
EEPROM Error Warn	F25	MCU error	Check whether the chip is damaged Replace the chip
V15V over/undervoltage fault	F28	The V15V is overload or undervoltage	Check the V15V input voltage in range 13.5v~16.5v or not

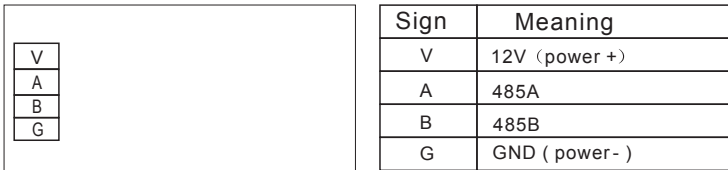
4. Use and Operation Instruction

10.2 Parameter list

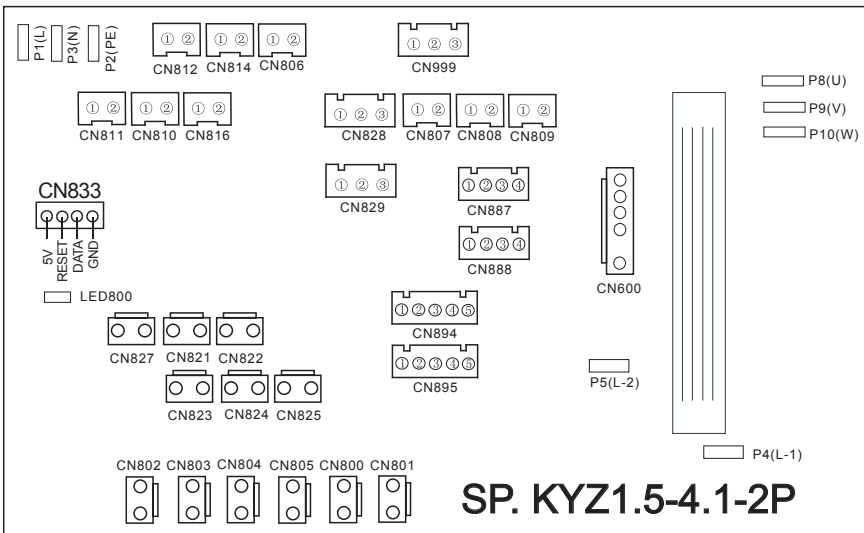
Meaning	Default	Remarks
Refrigeration target temperature set point	27°C	Adjustable
Heating the target temperature set point	27°C	Adjustable
Automatic target temperature set point	27°C	Adjustable

11. Interface drawing

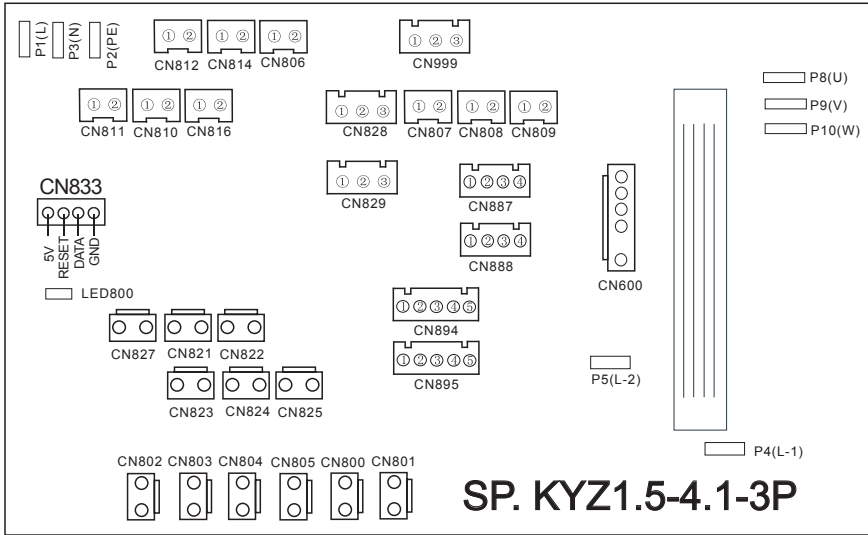
11.1 Wire control interface diagram and definition



11.2 Controller interface diagram and definition



4. Use and Operation Instruction

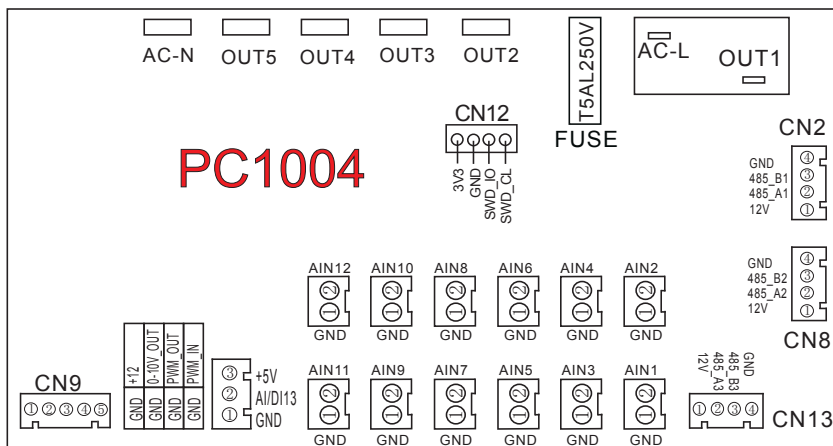


4. Use and Operation Instruction

Main board of the input and output interface instructions below

Number	Sign	Meaning
01	P8-9-10(U/V/W)	Compressor
02	CN803	Water pump
03	CN802	4-way valve
04	CN804	High speed of fan
05	CN805	Low speed of fan
06	CN800	Chassis heater
07	CN801	No use
08	P1(L)	Live wire(input 220-230VAC)
09	P3(N)	Neutral wire(input 220-230VAC)
10	CN894	Electronic expansion valve
11	CN827	System high pressure(input)
12	CN821	System low pressure(input)
13	CN822	Water flow switch(input)
14	CN823	Emergency switch(input)
15	CN824	No use
16	CN825	No use
17	CN806	System suction temperature(input)
18	CN814	Water input temperature(input)
19	CN810	Water output temperature(input)
20	CN812	Coil temperature(input)
21	CN811	Ambient temperature(input)
22	CN816	Exhaust temperature(input)
23	CN999	No use
24	CN828	No use
25	CN807	No use
26	CN808	No use
27	CN809	No use
28	CN895	No use
29	CN829	Low pressure sensor(input)
30	CN833	Program port
31	CN888	WiFi / Color line controller communication port
32	CN887	Centralized control communication port
33	CN600	DC motor speed control
34	P5/P4	Resistance

4. Use and Operation Instruction

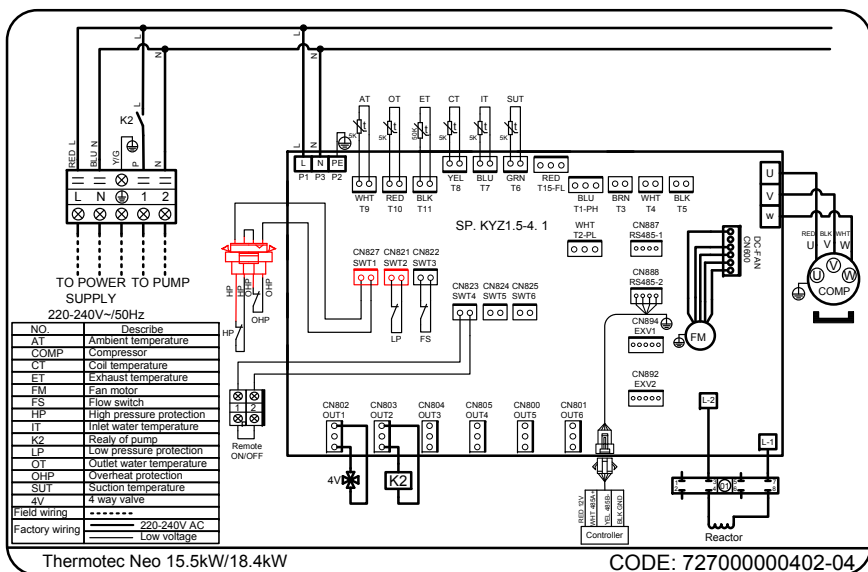
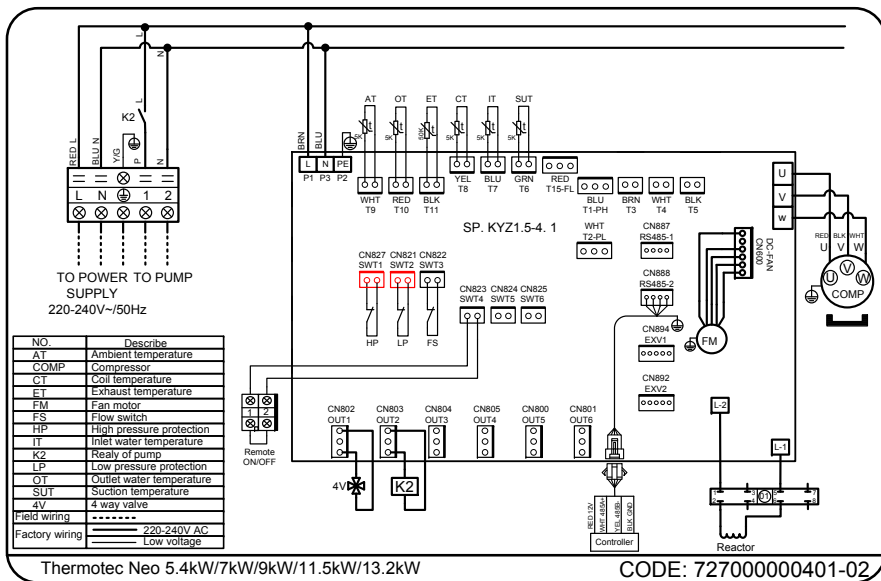


4. Use and Operation Instruction

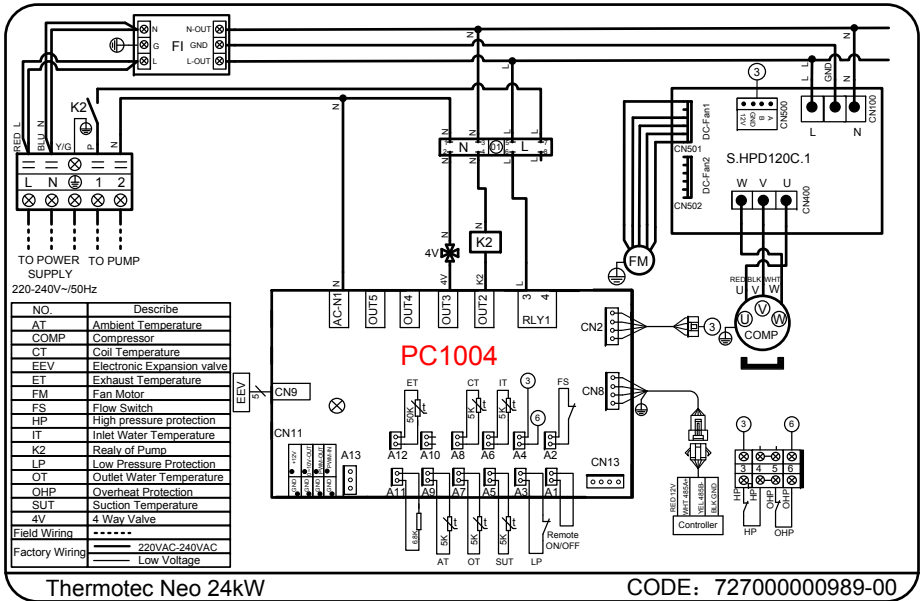
Connections explanation:

Number	Sign	Meaning
01	OUT1	Compressor (output 220-230VAC)
02	OUT2	Water pump (output 220-230VAC)
03	OUT3	4-way valve (output 220-230VAC)
04	OUT4	High speed of fan(output 220-230VAC)
05	OUT5	Low speed of fan/Chassis heating belt
06	AC-L	Live wire (input 220-230VAC)
07	AC-N	Neutral wire (input 220-230VAC)
08	AI/DI01	Emergency switch (input)
09	AI/DI02	Water flow switch (input)
10	AI/DI03	System low pressure (input)
11	AI/DI04	System high pressure (input)
12	AI/DI05	System suction temperature (input)
13	AI/DI06	Water input temperature (input)
14	AI/DI07	Water output temperature (input)
15	AI/DI08	System 1 coil temperature (input)
16	AI/DI09	Ambient temperature (input)
17	AI/DI10	Mode switch/System 2 coil temperature (input)
18	AI/DI11	Master-slave machine switch / Antifreeze temperature (input)
19	AI/DI12(50K)	System exhaust temperature (input)
20	0_5V_IN	Compressor current detection/Pressure sensor(input)
21	PWM_IN	Master-slave machine switch / Feedback signal of EC fan (input)
22	PWM_OUT	AC fan control (output)
23	0_10V_OUT	EC fan control (output)
24	+5V	+5V (output)
25	+12V	+12V (output)
26	CN2	Frequency conversion board communications
27	CN8	5 inch color display Wifi module Dc fan module
28	CN9	Electronic expansion valve
29	CN12	Program port
30	CN13	The port for centralized control

4. Use and Operation Instruction



4. Use and Operation Instruction



5. MAINTENANCE AND INSPECTION

- Check the water supply device and the release often. You should avoid the condition of no water or air entering into system, as this will influence unit's performance and reliability. You should clear the pool/spa filter regularly to avoid damage to the unit as a result of the dirty of clogged filter.
- The area around the unit should be dry, clean and well ventilated. Clean the side heating exchanger regularly to maintain good heat exchange as conserve energy .
- The operation pressure of the refrigerant system should only be serviced by a certified technician .
- Check the power supply and cable connection often, .Should the unit begin to operate abnormally, switch it off and contact the qualified technician.
- Discharge all water in the water pump and water system ,so that freezing of the water in the pump or water system does not occur. You should discharge the water at the bottom of water pump if the unit will not be used for an extended period of time. You should check the unit thoroughly and fill the system with water fully before using it for the first time after a
- Checks to the area
Prior to beginning work on systems containing flammable refrigerants, safety checks are necessary to ensure that the risk of ignition is minimised. For repair to the refrigerating system, the following precautions shall be complied with prior to conducting work on the system. prolonged period of no usage.
- Work procedure
Work shall be undertaken under a controlled procedure so as to minimise the risk of a flammable gas or vapour being present while the work is being performed.
- Work procedure
Work shall be undertaken under a controlled procedure so as to minimise the risk of a flammable gas or vapour being present while the work is being performed.
- General work area
All maintenance staff and others working in the local area shall be instructed on the nature of work being carried out. Work in confined spaces shall be avoided. The area around the workspace shall be sectioned off. Ensure that the conditions within the area have been made safe by control of flammable material.
- General work area
All maintenance staff and others working in the local area shall be instructed on the nature of work being carried out. Work in confined spaces shall be avoided. The area around the workspace shall be sectioned off. Ensure that the conditions within the area have been made safe by control of flammable material.
- Checking for presence of refrigerant
The area shall be checked with an appropriate refrigerant detector prior to and during work, to ensure the technician is aware of potentially flammable atmospheres. Ensure that the leak detection equipment being used is suitable for use with flammable refrigerants, i.e. non-sparking, adequately sealed or intrinsically safe.
- Presence of fire extinguisher
If any hot work is to be conducted on the refrigeration equipment or any associated parts, appropriate fire extinguishing equipment shall be available to hand. Have a dry powder or CO2 fire extinguisher adjacent

5. MAINTENANCE AND INSPECTION

● No ignition sources

No person carrying out work in relation to a refrigeration system which involves exposing any pipe work that contains or has contained flammable refrigerant shall use any sources of ignition in such a manner that it may lead to the risk of fire or explosion. All possible ignition sources, including cigarette smoking, should be kept sufficiently far away from the site of installation, repairing, removing and disposal, during which flammable refrigerant can possibly be released to the surrounding space. Prior to work taking place, the area around the equipment is to be surveyed to make sure that there are no flammable hazards

● Ventilated area

Ensure that the area is in the open or that it is adequately ventilated before breaking into the system or conducting any hot work. A degree of ventilation shall continue during the period that the work is carried out. The ventilation should safely disperse any released refrigerant and preferably expel it externally into the atmosphere. prolonged period of no usage.

● Checks to the area

Prior to beginning work on systems containing flammable refrigerants, safety checks are necessary to ensure that the risk of ignition is minimised. For repair to the refrigerating system, the following precautions shall be complied with prior to conducting work on the system. prolonged period of no usage.

● Checks to the refrigeration equipment

Where electrical components are being changed, they shall be fit for the purpose and to the correct specification. At all times the manufacturer's maintenance and service guidelines shall be followed. If in doubt consult the manufacturer's technical department for assistance.

The following checks shall be applied to installations using flammable refrigerants:

The charge size is in accordance with the room size within which the refrigerant containing parts are installed;

The ventilation machinery and outlets are operating adequately and are not obstructed;

If an indirect refrigerating circuit is being used, the secondary circuit shall be checked for the presence of refrigerant;

Marking to the equipment continues to be visible and legible. Markings and signs that are illegible shall be corrected;

Refrigeration pipe or components are installed in a position where they are unlikely to be exposed to any substance which may corrode refrigerant containing components, unless the components are constructed of materials which are inherently resistant to being corroded or are suitably protected against being so corroded.

● Checks to electrical devices

Repair and maintenance to electrical components shall include initial safety checks and component inspection procedures. If a fault exists that could compromise safety, then no electrical supply shall be connected to the circuit until it is satisfactorily dealt with. If the fault cannot be corrected immediately but it is necessary to continue operation, an adequate temporary solution shall be used. This shall be reported to the owner of the equipment so all parties are advised.

Initial safety checks shall include:

. That capacitors are discharged: this shall be done in a safe manner to avoid possibility of sparking;

. That there no live electrical components and wiring are exposed while charging, recovering or purging the system;

. That there is continuity of earth bonding.

5. MAINTENANCE AND INSPECTION

● Repairs to sealed components

1) During repairs to sealed components, all electrical supplies shall be disconnected from the equipment being worked upon prior to any removal of sealed covers, etc. If it is absolutely necessary to have an electrical supply to equipment during servicing, then a permanently operating form of leak detection shall be located at the most critical point to warn of a potentially hazardous situation.

2) Particular attention shall be paid to the following to ensure that by working on electrical components, the casing is not altered in such a way that the level of protection is affected. This shall include damage to cables, excessive number of connections, terminals not made to original specification, damage to seals, incorrect fitting of glands, etc.

● Ensure that apparatus is mounted securely.

● Ensure that seals or sealing materials have not degraded such that they no longer serve the purpose of preventing the ingress of flammable atmospheres. Replacement parts shall be in accordance with the manufacturer's specifications.

NOTE: The use of silicon sealant may inhibit the effectiveness of some types of leak

● Repair to intrinsically safe components

Do not apply any permanent inductive or capacitance loads to the circuit without ensuring that this will not exceed the permissible voltage and current permitted for the equipment in use.

Intrinsically safe components are the only types that can be worked on while live in the presence of a flammable atmosphere. The test apparatus shall be at the correct rating.

Replace components only with parts specified by the manufacturer. Other parts may result in the ignition of refrigerant in the atmosphere from a leak.

● Cabling

Check that cabling will not be subject to wear, corrosion, excessive pressure, vibration, sharp edges or any other adverse environmental effects. The check shall also take into account the effects of aging or continual vibration from sources such as compressors or fans.

● Detection of flammable refrigerants

Under no circumstances shall potential sources of ignition be used in the searching for or detection of refrigerant leaks. A halide torch (or any other detector using a naked flame) shall not be used.

Leak detection methods

The following leak detection methods are deemed acceptable for systems containing flammable refrigerants.

● Sensitivity of leak detectors

Electronic leak detectors shall be used to detect flammable refrigerants, but the sensitivity may not be adequate, or may need re-calibration. (Detection equipment shall be calibrated in a refrigerant-free area.) Ensure that the detector is not a potential source of ignition and is suitable for the refrigerant used. Leak detection equipment shall be set at a percentage of the LFL of the refrigerant and shall be calibrated to the refrigerant employed and the appropriate percentage of gas ($\gamma \circ$ % maximum) is confirmed.

Leak detection fluids are suitable for use with most refrigerants but the use of detergents containing chlorine shall be avoided as the chlorine may react with the refrigerant and corrode the copper pipe-work.

If a leak is suspected, all naked flames shall be removed/ extinguished.

If a leakage of refrigerant is found which requires brazing, all of the refrigerant shall be recovered from the system, or isolated (by means of shut off valves) in a part of the system remote from the leak. Oxygen free nitrogen (OFN) shall then be purged through the system both before and during the brazing process.

5. MAINTENANCE AND INSPECTION

- **Removal and evacuation**

When breaking into the refrigerant circuit to make repairs or for any other purpose conventional procedures shall be used. However, it is important that best practice is followed since flammability is a consideration. The following procedure shall be adhered to:

 - . Remove refrigerant;
 - . Purge the circuit with inert gas;
 - . Evacuate;
 - . Purge again with inert gas;
 - . Open the circuit by cutting or brazing.
- **The refrigerant charge shall be recovered into the correct recovery cylinders. The system shall be "flushed" with OFN to render the unit safe. This process may need to be repeated several times. Compressed air or oxygen shall not be used for this task.**

Flushing shall be achieved by breaking the vacuum in the system with OFN and continuing to fill until the working pressure is achieved, then venting to atmosphere, and finally pulling down to a vacuum. This process shall be repeated until no refrigerant is within the system. When the final OFN charge is used, the system shall be vented down to atmospheric pressure to enable work to take place. This operation is absolutely vital if brazing operations on the pipe-work are to take place.

Ensure that the outlet for the vacuum pump is not close to any ignition sources and there
- **Labelling**

Equipment shall be labelled stating that it has been de-commissioned and emptied of refrigerant. The label shall be dated and signed. Ensure that there are labels on the equipment stating the equipment contains flammable refrigerant.
- **Recovery**

When removing refrigerant from a system, either for servicing or decommissioning, it is recommended good practice that all refrigerants are removed safely.

When transferring refrigerant into cylinders, ensure that only appropriate refrigerant recovery cylinders are employed. Ensure that the correct number of cylinders for holding the total system charge is available. All cylinders to be used are designated for the recovered refrigerant and labelled for that refrigerant (i.e. special cylinders for the recovery of refrigerant). Cylinders shall be complete with pressure relief valve and associated shut-off valves in good working order. Empty recovery cylinders are evacuated and, if possible, cooled before recovery occurs.

The recovery equipment shall be in good working order with a set of instructions concerning the equipment that is at hand and shall be suitable for the recovery of flammable refrigerants. In addition, a set of calibrated weighing scales shall be available and in good working order. Hoses shall be complete with leak-free disconnect couplings and in good condition. Before using the recovery machine, check that it is in satisfactory working order, has been properly maintained and that any associated electrical components are sealed to prevent ignition in the event of a refrigerant release. Consult manufacturer if in doubt.

The recovered refrigerant shall be returned to the refrigerant supplier in the correct recovery cylinder, and the relevant Waste Transfer Note arranged. Do not mix refrigerants in recovery units and especially not in cylinders.

If compressors or compressor oils are to be removed, ensure that they have been evacuated to an acceptable level to make certain that flammable refrigerant does not remain within the lubricant. The evacuation process shall be carried out prior to returning the compressor to the suppliers. Only electric heating to the compressor body shall be employed to accelerate this process. When oil is drained from a system, it shall be carried out safely.

5. MAINTENANCE AND INSPECTION

● Decommissioning

Before carrying out this procedure, it is essential that the technician is completely familiar with the equipment and all its detail. It is recommended good practice that all refrigerants are recovered safely. Prior to the task being carried out, an oil and refrigerant sample shall be taken in case analysis is required prior to re-use of reclaimed refrigerant. It is essential that electrical power is available before the task is commenced.

a) Become familiar with the equipment and its operation.

b) Isolate system electrically.

c) Before attempting the procedure ensure that:

. Mechanical handling equipment is available, if required, for handling refrigerant cylinders;

. All personal protective equipment is available and being used correctly;

. The recovery process is supervised at all times by a competent person;

. Recovery equipment and cylinders conform to the appropriate standards.

d) Pump down refrigerant system, if possible.

e) If a vacuum is not possible, make a manifold so that refrigerant can be removed from various parts of the system.

f) Make sure that cylinder is situated on the scales before recovery takes place.

g) Start the recovery machine and operate in accordance with manufacturer's instructions.

h) Do not overfill cylinders. (No more than 10 % volume liquid charge).

i) Do not exceed the maximum working pressure of the cylinder, even temporarily.

j) When the cylinders have been filled correctly and the process completed, make sure that the cylinders and the equipment are removed from site promptly and all isolation valves on the equipment are closed off.

● Charging procedures

In addition to conventional charging procedures, the following requirements shall be followed.

.. Ensure that contamination of different refrigerants does not occur when using charging equipment. Hoses or lines shall be as short as possible to minimise the amount of refrigerant contained in them.

.. Cylinders shall be kept upright.

.. Ensure that the refrigeration system is earthed prior to charging the system with refrigerant.

.. Label the system when charging is complete (if not already).

.. Extreme care shall be taken not to overfill the refrigeration system.

Prior to recharging the system it shall be pressure tested with OFN. The system shall be

● The safety wire model is 5*20_5A/250VAC, And must meet the explosion-proof requirements

6. APPENDIX

6.1 Cable specification

(1) Single phase unit

Nameplate maximum current	Phase line	Earth line	MCB	Creepage protector	Signal line
No more than 10A	2×1.5mm ²	1.5mm ²	20A	30mA less than 0.1 sec	n×0.5mm ²
10~16A	2×2.5mm ²	2.5mm ²	32A	30mA less than 0.1 sec	
16~25A	2×4mm ²	4mm ²	40A	30mA less than 0.1 sec	
25~32A	2×6mm ²	6mm ²	40A	30mA less than 0.1 sec	
32~40A	2×10mm ²	10mm ²	63A	30mA less than 0.1 sec	
40~63A	2×16mm ²	16mm ²	80A	30mA less than 0.1 sec	
63~75A	2×25mm ²	25mm ²	100A	30mA less than 0.1 sec	
75~101A	2×25mm ²	25mm ²	125A	30mA less than 0.1 sec	
101~123A	2×35mm ²	35mm ²	160A	30mA less than 0.1 sec	
123~148A	2×50mm ²	50mm ²	225A	30mA less than 0.1 sec	
148~186A	2×70mm ²	70mm ²	250A	30mA less than 0.1 sec	
186~224A	2×95mm ²	95mm ²	280A	30mA less than 0.1 sec	

(2) Three phase unit

Nameplate maximum current	Phase line	Earth line	MCB	Creepage protector	Signal line
No more than 10A	3×1.5mm ²	1.5mm ²	20A	30mA less than 0.1 sec	n×0.5mm ²
10~16A	3×2.5mm ²	2.5mm ²	32A	30mA less than 0.1 sec	
16~25A	3×4mm ²	4mm ²	40A	30mA less than 0.1 sec	
25~32A	3×6mm ²	6mm ²	40A	30mA less than 0.1 sec	
32~40A	3×10mm ²	10mm ²	63A	30mA less than 0.1 sec	
40~63A	3×16mm ²	16mm ²	80A	30mA less than 0.1 sec	
63~75A	3×25mm ²	25mm ²	100A	30mA less than 0.1 sec	
75~101A	3×25mm ²	25mm ²	125A	30mA less than 0.1 sec	
101~123A	3×35mm ²	35mm ²	160A	30mA less than 0.1 sec	
123~148A	3×50mm ²	50mm ²	225A	30mA less than 0.1 sec	
148~186A	3×70mm ²	70mm ²	250A	30mA less than 0.1 sec	
186~224A	3×95mm ²	95mm ²	280A	30mA less than 0.1 sec	

When the unit will be installed at outdoor, please use the cable which can against UV.

6.APPENDIX

6.2 Comparison table of refrigerant saturation temperature

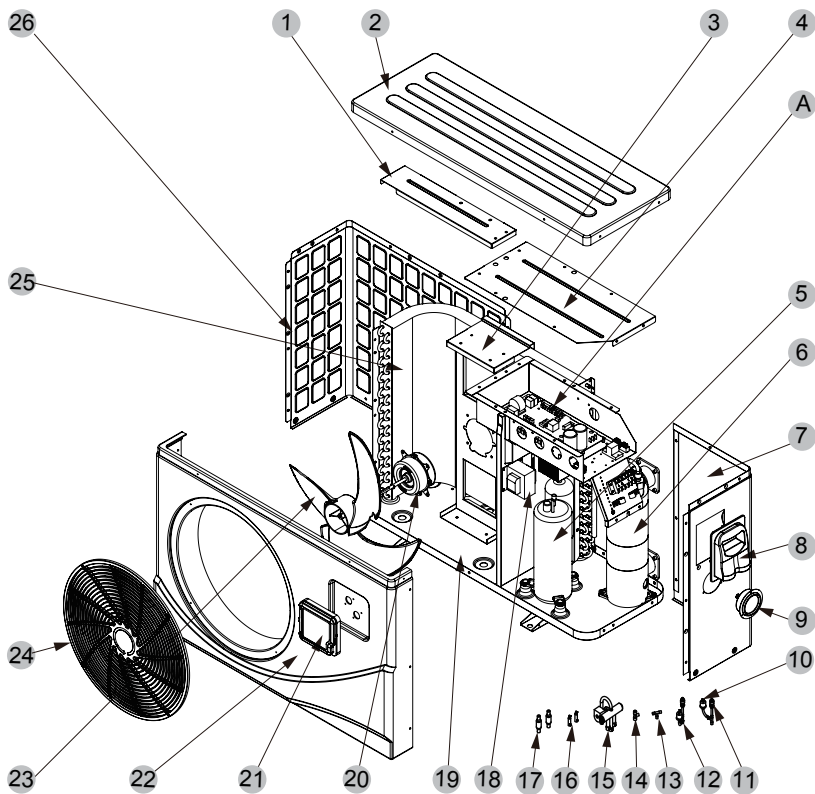
Pressure (MPa)	0	0.3	0.5	0.8	1	1.3	1.5	1.8	2	2.3
Temperature (R410A)(°C)	-51.3	-20	-9	4	11	19	24	31	35	39
Temperature (R32)(°C)	-52.5	-20	-9	3.5	10	18	23	29.5	33.3	38.7
Pressure (MPa)	2.5	2.8	3	3.3	3.5	3.8	4	4.5	5	5.5
Temperature (R410A)(°C)	43	47	51	55	57	61	64	70	74	80
Temperature (R32)(°C)	42	46.5	49.5	53.5	56	60	62	67.5	72.5	77.4

6.APPENDIX

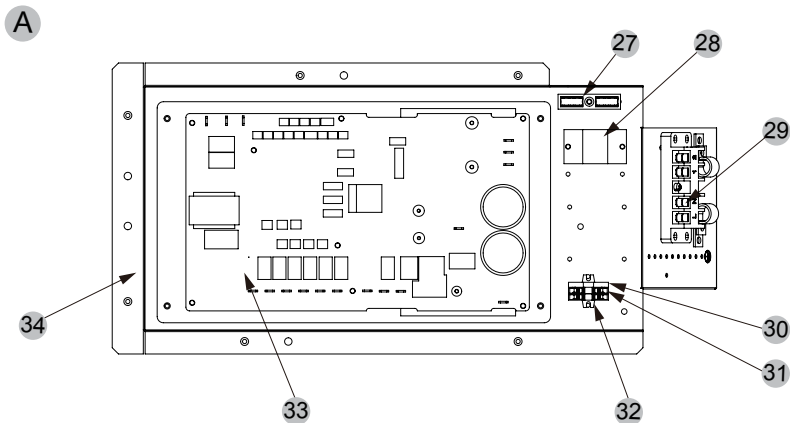
6.3 Explosive view of the unit

Model and code: (Thermotec Neo 5.4kW/7kW)

1 Complete machine structure explosion diagram



2 Electrical control structure explosion diagram



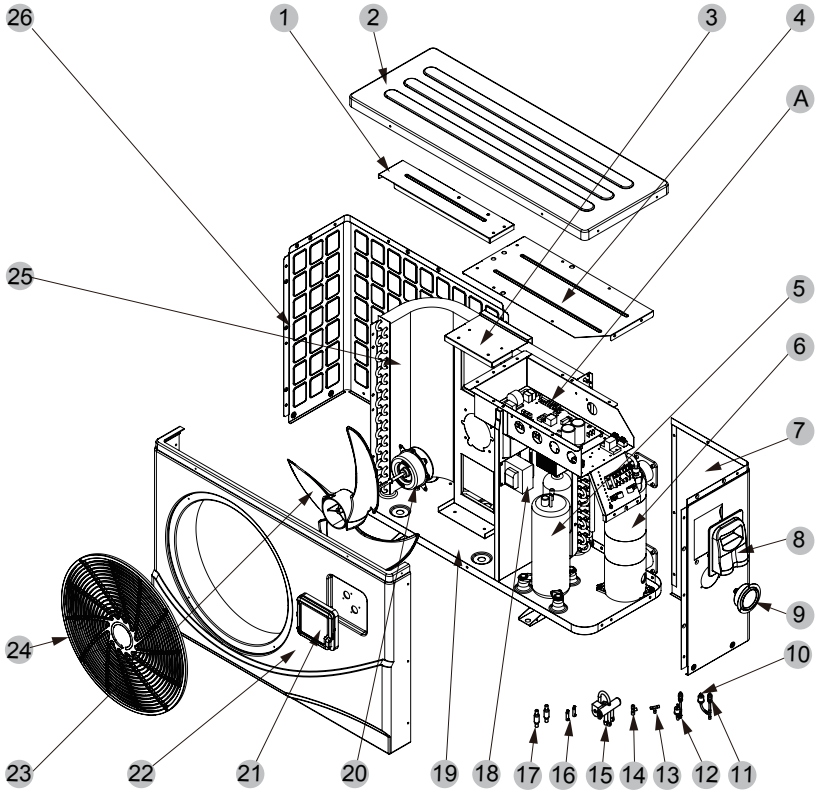
6.APPENDIX

No.	Code	Name	Specifications	Qty
1	80716042	Fan cavity roof	Galvanized sheet	1
2	80901463	Top cover	ABS	1
3	80716035	Fan motorbracket	Galvanized sheet	1
4	80716043	Electric box cover	Galvanized sheet	1
5	80100140	Compressor	FTz-SN150AXBA	1
6	72300106	Titanium heat exchanger	Φ9.52×4m Φ110	1
7	80719465	Right side panel	Galvanized sheet	1
8	32009-220029	Junction box	ABS	1
9	81900044	Pressure gauge	0-55Kg/cm2	1
10	20000-360157	Low Pressure switch	0.30MPa/0.15MPa ±0.05	1
11	20000-140150	Needle valve	40 mm 1/2 interface	1
12	2001-3605	High Pressure switch	3.2MPa/4.4MPa ±0.15	1
13	304030-00000002	Tee-joints	Φ9.52-2×Φ6.35(T)×1.0	1
14	2000-1460	Tee-joints	Φ6.5-2×Φ6.5(T)×0.75 T2M	2
15	20000-140484	4-way-valve	DSF-9-R410A	1
16	20000-140066	Change direct connection	Φ9.52(o)-Φ2.9(i)×0.75 T2M	2
17	20000-140178	Filter	Φ9.7-Φ9.7(Φ19) T2M	2
18	82500020	Reactor	EL165FN	1
19	80720690	Chassis	Galvanized sheet	1
20	80200018	Fan motor	ZWS40-E51	1
21	72200452	Wire controller	82300318+82400426	1
22	809000000081	Front panel	ABS	1
23	301030-00000006	Fan blade	Φ405×134-Φ8(7)×3	1
24	80900375	Fan protection net	Φ460 ABS+30%GF black	1
25	80601560	Fin heat exchanger	580×200×550×Φ7×1.1.5	1
26	80719466	Back side panel	Galvanized sheet	1
27	2000-3909	2-position terminal block	RS9211(450V~4MM2)	1
28	20000-360297	Relay	HATF903AS30AC220 AC220V 30A	1
29	4000-3901	5-position Terminal	RS9101C-5(450V~ 4mm2)	1
30	20000-390047	Terminal block	D-MSB 1.5-F	1
31	20000-390046	Terminals	MSB 2.5-M	1
32	20000-390049	Terminals	MSB 2.5-F	1
33	72200484	Inverter drive board	82300379+82400470	1
34	80716038	Electrical box	Galvanized sheet	1

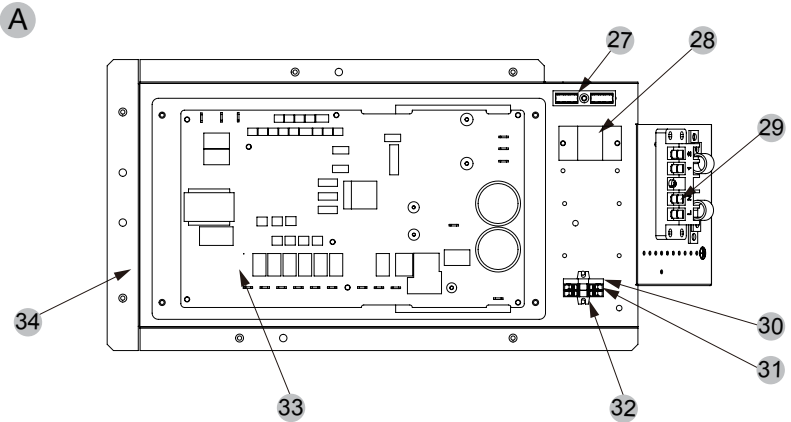
6.APPENDIX

Model and code: (Thermotec Neo 9kW)

1 Complete machine structure explosion diagram



2 Electrical control structure explosion diagram



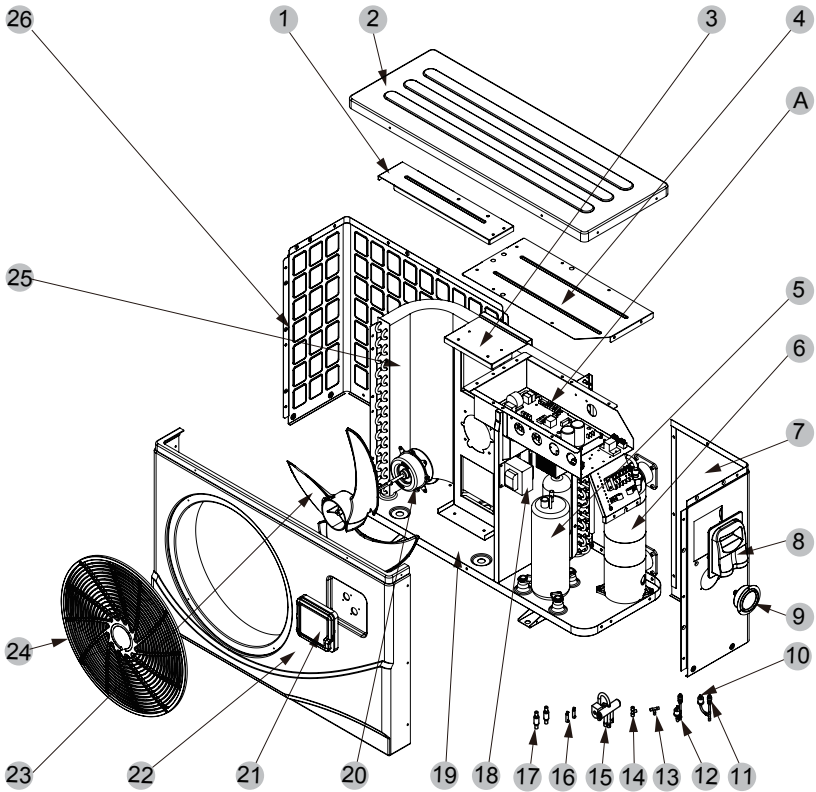
6.APPENDIX

No.	Code	Name	Specifications	Qty
1	80716042	Fan cavity roof	Galvanized sheet	1
2	80901463	Top cover	ABS	1
3	80716035	Fan motorbracket	Galvanized sheet	1
4	80716043	Electric box cover	Galvanized sheet	1
5	80100140	Compressor	FTz-SN150AXBA	1
6	72300093	Titanium heat exchanger	Φ9.52×5m Φ110	1
7	80719465	Right side panel	Galvanized sheet	1
8	32009-220029	Junction box	ABS	1
9	81900044	Pressure gauge	0-55Kg/cm2	1
10	20000-360157	Low Pressure switch	0.30MPa/0.15MPa ±0.05	1
11	20000-140150	Needle valve	40 mm 1/2 interface	1
12	2001-3605	High Pressure switch	3.2MPa/4.4MPa ±0.15	1
13	304030-00000002	Tee-joints	Φ9.52-2×Φ6.35(T)×1.0	1
14	2000-1460	Tee-joints	Φ6.5-2×Φ6.5(T)×0.75 T2M	2
15	20000-140484	4-way-valve	DSF-9-R410A	1
16	20000-140058	Change direct connection	Φ9.52(o)-Φ3.4(i)×0.75 T2M	2
17	20000-140178	Filter	Φ9.7-Φ9.7(Φ19) T2M	2
18	82500020	Reactor	EL165FN	1
19	80720690	Chassis	Galvanized sheet	1
20	80200018	Fan motor	ZWS40-E51	1
21	72200452	Wire controller	82300318+82400426	1
22	809000000081	Front panel	ABS	1
23	301030-00000006	Fan blade	Φ405×134-Φ8(7)×3	1
24	80900375	Fan protection net	Φ460 ABS+30%GF black	1
25	80601563	Fin heat exchanger	580×200×550×Φ7×1.5 1.8	1
26	80719466	Back side panel	Galvanized sheet	1
27	2000-3909	2-position terminal block	RS9211(450V~4MM2)	1
28	20000-360297	Relay	HATF903AS30AC220 AC220V 30A	1
29	4000-3901	5-position Terminal	RS9101C-5(450V~ 4mm2)	1
30	20000-390047	Terminal block	D-MSB 1.5-F	1
31	20000-390046	Terminals	MSB 2.5-M	1
32	20000-390049	Terminals	MSB 2.5-F	1
33	72200484	Inverter drive board	82300379+82400470	1
34	80716038	Electrical box	Galvanized sheet	1

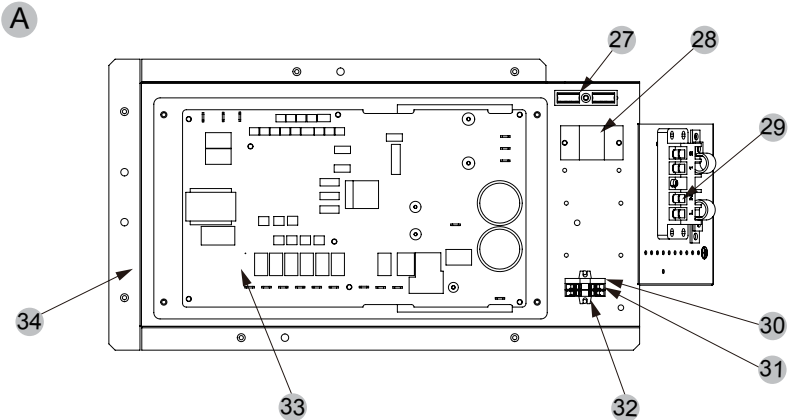
6.APPENDIX

Model and code: (Thermotec Neo 11.5kW)

1 Complete machine structure explosion diagram



2 Electrical control structure explosion diagram



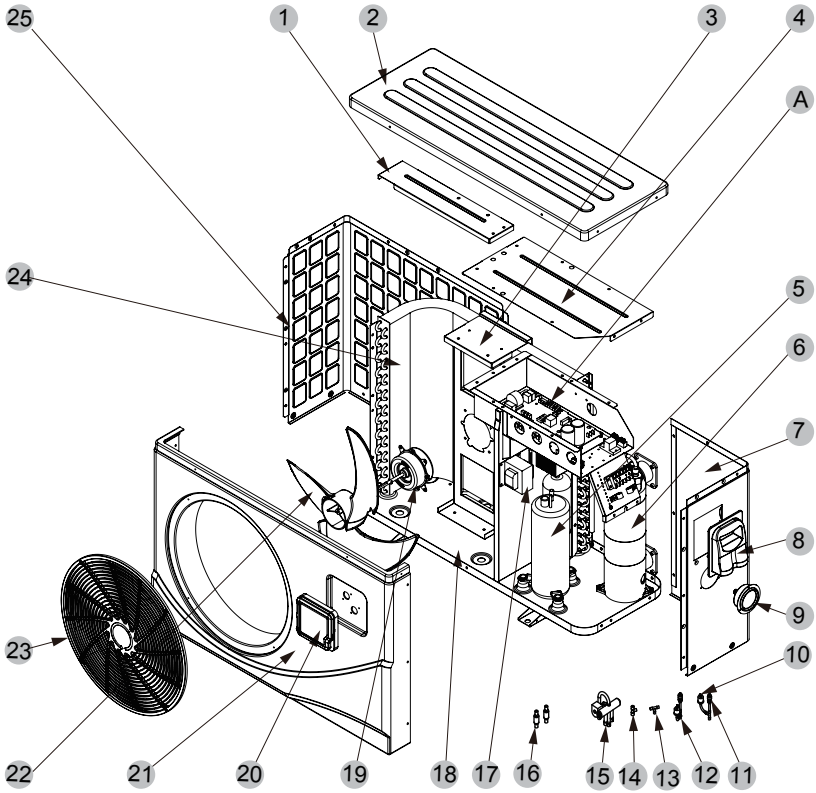
6.APPENDIX

No.	Code	Name	Specifications	Qty
1	80721878	Fan cavity roof	Galvanized sheet	1
2	80901816	Top cover	ABS	1
3	80718437	Fan motor bracket	Galvanized sheet	1
4	80721879	Electric box cover	Galvanized sheet	1
5	80100140	Compressor	FTz-SN150AXBA	1
6	72300103	Titanium heat exchanger	Φ9.52×6m Φ110	1
7	80719465	Right side panel	Galvanized sheet	1
8	32009-220029	Junction box	ABS	1
9	81900044	Pressure gauge	0-55Kg/cm ²	1
10	20000-360157	Low Pressure switch	0.30MPa/0.15MPa ±0.05	1
11	20000-140150	Needle valve	40 mm 1/2 interface	1
12	2001-3605	High Pressure switch	3.2MPa/4.4MPa ±0.15	1
13	304030-00000002	Tee-joints	Φ9.52-2×Φ6.35(T)×1.0	1
14	2000-1460	Tee-joints	Φ6.5-2×Φ6.5(T)×0.75 T2M	2
15	20000-140484	4-way-valve	DSF-9-R410A	1
16	20000-140058	Change direct connection	Φ9.52(o)-Φ3.4(i)×0.75 T2M	2
17	20000-140178	Filter	Φ9.7-Φ9.7(Φ19) T2M	2
18	82500020	Reactor	EL165FN	1
19	807000000736	Chassis	Galvanized sheet	1
20	80200018	Fan motor	ZWS40-E51	1
21	72200452	Wire controller	82300318+82400426	1
22	809000000081	Front panel	ABS	1
23	301030-00000006	Fan blade	Φ405×134-Φ8(7)×3	1
24	80900375	Fan protection net	Φ460 ABS+30%GF black	1
25	80601565	Fin heat exchanger	580×200×550×Φ7×2 2.0	1
26	807000000740	Back side panel	Galvanized sheet	1
27	2000-3909	2-position terminal block	RS9211(450V~4MM2)	1
28	20000-360297	Relay	HATF903AS30AC220 AC220V 30A	1
29	4000-3901	5-position Terminal	RS9101C-5(450V~ 4mm2)	1
30	20000-390047	Terminal block	D-MSB 1.5-F	1
31	20000-390046	Terminals	MSB 2.5-M	1
32	20000-390049	Terminals	MSB 2.5-F	1
33	72200484	Inverter drive board	82300379+82400470	1
34	80716038	Electrical box	Galvanized sheet	1

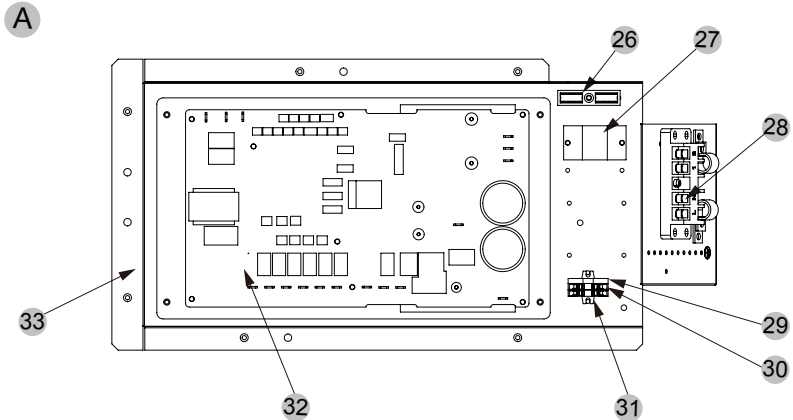
6.APPENDIX

Model and code: (Thermotec Neo 13.2kW)

1 Complete machine structure explosion diagram



2 Electrical control structure explosion diagram



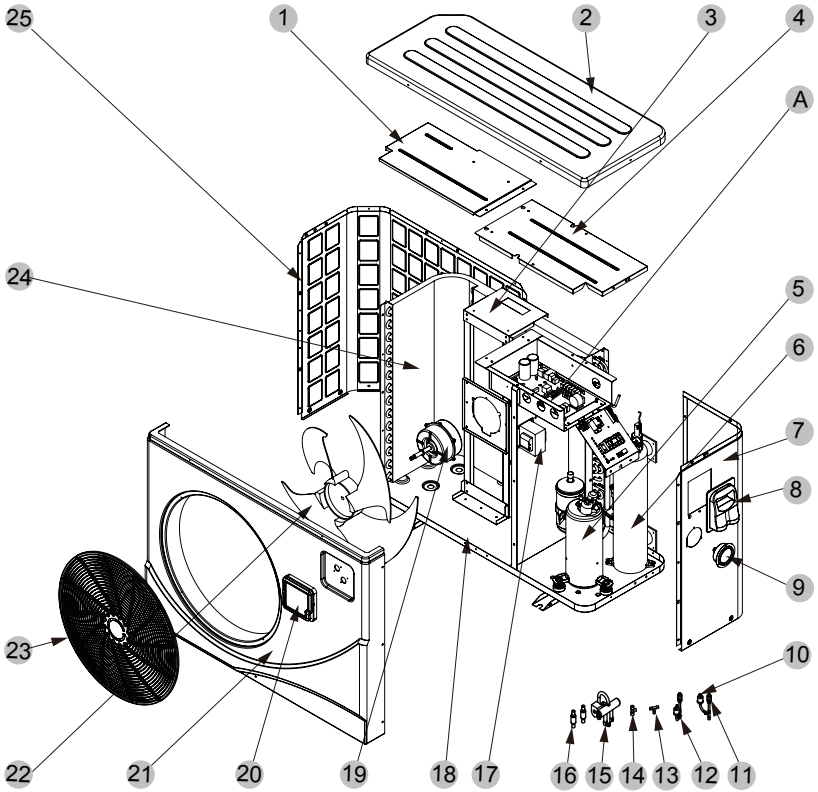
6.APPENDIX

No.	Code	Name	Specifications	Qty
1	80721878	Fan cavity roof	Galvanized sheet	1
2	80901463	Top cover	ABS	1
3	80718437	Fan motor bracket	Galvanized sheet	1
4	80719069	Electric box cover	Galvanized sheet	1
5	80100140	Compressor	FTz-SN150AXBA	1
6	72300197	Titanium heat exchanger	Φ9.52×6m Φ110	1
7	80719427	Right side panel	Galvanized sheet	1
8	32009-220029	Junction box	ABS	1
9	81900044	Pressure gauge	0-55Kg/cm ²	1
10	20000-360157	Low Pressure switch	0.30MPa/0.15MPa ±0.05	1
11	20000-140150	Needle valve	40 mm 1/2 interface	1
12	2001-3605	High Pressure switch	3.2MPa/4.4MPa ±0.15	1
13	304030-00000002	Tee-joints	Φ9.52-2×Φ6.35(T)×1.0	1
14	2000-1460	Tee-joints	Φ6.5-2×Φ6.5(T)×0.75 T2M	2
15	20000-140484	4-way-valve	DSF-9-R410A	1
16	2000-1494	Filter	Φ9.7-Φ9.7(Φ19) T2M	2
17	82500020	Reactor	EL165FN	1
18	80719423	Chassis	Galvanized sheet	1
19	80200018	Fan motor	ZWS40-E51	1
20	72200452	Wire controller	82300318+82400426	1
21	809000000214	Front panel	ABS	1
22	301030-00000006	Fan blade	Φ405×134-Φ8(7)×3	1
23	80900375	Fan protection net	Φ460 ABS+30%GF black	1
24	80601798	Fin heat exchanger	580×200×550×Φ7×2 2.0	1
25	80719426	Back side panel	Galvanized sheet	1
26	2000-3909	2-position terminal block	RS9211(450V~4MM2)	1
27	20000-360297	Relay	HATF903AS30AC220 AC220V 30A	1
28	4000-3901	5-position Terminal	RS9101C-5(450V~ 4mm ²)	1
29	20000-390047	Terminal block	D-MSB 1.5-F	1
30	20000-390046	Terminals	MSB 2.5-M	1
31	20000-390049	Terminals	MSB 2.5-F	1
32	72200484	Inverter drive board	82300379+82400470	1
33	80719067	Electrical box	Galvanized sheet	1

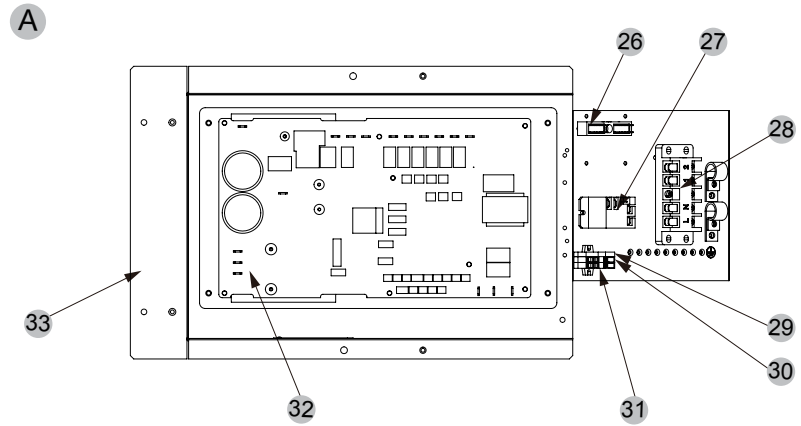
6.APPENDIX

Model and code: (Thermotec Neo 15.5kW/18.4kW)

1 Complete machine structure explosion diagram



2 Electrical control structure explosion diagram



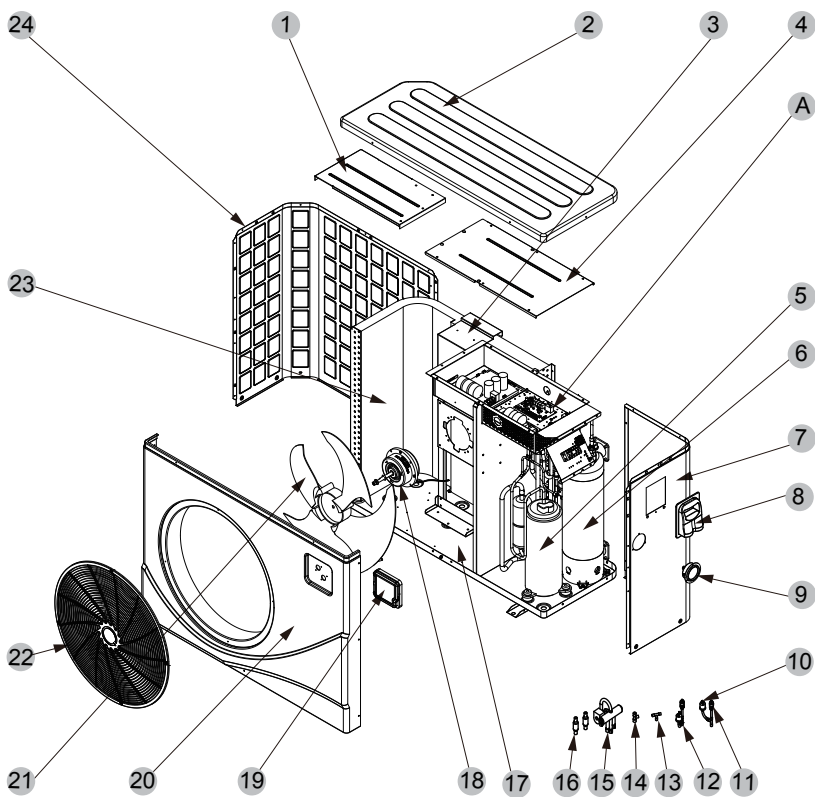
6.APPENDIX

No.	Code	Name	Specifications	Qty
1	80715865	Fan cavity roof	Galvanized sheet	1
2	301090-20080006	Top cover	ABS	1
3	80700248	Fan motor bracket	Galvanized sheet	1
4	80715864	Electric box cover	Galvanized sheet	1
5	80100139	Compressor	FTz-SB238ANAA	1
6	72300034	Titanium heat exchanger	Φ9.52×9m Φ110	1
7	80721805	Right side panel	Galvanized sheet	1
8	32009-220029	Junction box	ABS	1
9	81900044	Pressure gauge	0-55Kg/cm2	1
10	20000-360157	Low Pressure switch	0.30MPa/0.15MPa ±0.05	1
11	20000-140150	Needle valve	40 mm 1/2 interface	1
12	2001-3605	High Pressure switch	3.2MPa/4.4MPa ±0.15	1
13	304030-00000002	Tee-joints	Φ9.52-2×Φ6.35(T)×1.0	1
14	2000-1460	Tee-joints	Φ6.5-2×Φ6.5(T)×0.75 T2M	2
15	2004-1437	4-way-valve	DSF-11E-1030	1
16	2000-1499	Filter	Φ9.7-Φ3.8(Φ19) T2Y2	2
17	82500021	Reactor	EL205FN	1
18	80701851	Chassis	Galvanized sheet	1
19	20000-330132	Fan motor	ZWS75-A	1
20	72200452	Wire controller	82300318+82400426	1
21	809000000082	Front panel	ABS	1
22	20000-270004	Fan blade	Z500-145	1
23	20000-220369	Fan protection net	ABS black Φ500	1
24	80601564	Fin heat exchanger	680×290×700×Φ7×1.5 2	1
25	80701853	Back side panel	Galvanized sheet	1
26	2000-3909	2-position terminal block	RS9211(450V~4MM2)	1
27	20000-360297	Relay	HATF903AS30AC220 AC220V 30A	1
28	4000-3901	5-position Terminal	RS9101C-5(450V~ 4mm2)	1
29	20000-390047	Terminal block	D-MSB 1.5-F	1
30	20000-390046	Terminals	MSB 2.5-M	1
31	20000-390049	Terminals	MSB 2.5-F	1
32	72200485	Inverter drive board	82300380+82400470	1
33	80715861	Electrical box	Galvanized sheet	1

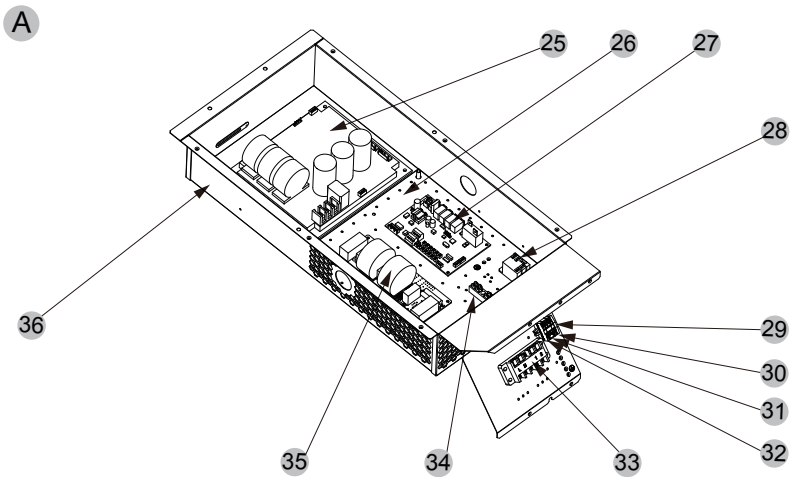
6.APPENDIX

Model and code: (Thermotec Neo 24kW)

1 Complete machine structure explosion diagram



2 Electrical control structure explosion diagram



6.APPENDIX

No.	Code	Name	Specifications	Qty
1	80713855	Fan cavity roof	Black gloss 9005	1
2	80900076	Top cover	ABS	1
3	80712877	Fan motor bracket	Black gloss 9005	1
4	80713852	Electric box cover	Black gloss 9005	1
5	80100069	Compressor	9VD330XAB21	1
6	72300134	Titanium heat exchanger	$\Phi 16 \times 7.3m + \Phi 12.7 \times 4.7m$ $\Phi 160$	1
7	80702051	Right side panel	Light gray 7012	1
8	32009-220029	Junction box	ABS	1
9	81900044	Pressure gauge	0-55Kg/cm ²	1
10	20000-360157	Low Pressure switch	0.30MPa/0.15MPa ± 0.05	1
11	20000-140150	Needle valve	40 mm 1/2 interface	2
12	2001-3605	High Pressure switch	3.2MPa/4.4MPa ± 0.15	1
13	304030-00000002	Tee-joints	$\Phi 9.52-2 \times \Phi 6.35(T) \times 1.0$	1
14	2000-1460	Tee-joints	$\Phi 6.5-2 \times \Phi 6.5(T) \times 0.75$ T2M	3
15	2004-1437	4-way-valve	DSF-11E-1030	1
16	2004-1444	Filter	$\Phi 9.7-\Phi 9.7$ ($\Phi 28$) T2Y2	2
17	80716981	Chassis	Light gray 7012	1
18	20000-330309	Fan motor	ZWS150-F2	1
19	72200452	Wire controller	82300318+82400426	1
20	809000000215	Front panel	ABS	1
21	80300078	Fan blade	$\Phi 551 \times 160-\Phi 12(10) \times 4$	1
22	20000-220338	Fan protection net	ABS black $\Phi 560$	1
23	80601367	Fin heat exchanger	$714 \times 353 \times 800 \times \Phi 7 \times 2.5$ 2.0	1
24	80701856	Back side panel	Light gray 7012	1
25	82300341	Inverter drive board	S.HPD120C.1	1
26	80713856	Lining plate	Galvanized sheet	1
27	72200463	PC1004-G board	82300317+82400442	1
28	20000-360297	Relay	HATF903AS30AC220 AC220V 30A	1
29	20000-390047	Terminal block	D-MSB 1.5-F	1
30	20000-390046	Terminals	MSB 2.5-M	1
31	20000-390048	Terminals	MSDB 2.5-M	1
32	20000-390049	Terminals	MSB 2.5-F	1
33	4000-3901	5-position Terminal	RS9101C-5(450V~4mm ²)	1
34	2000-3909	2-position terminal block	RS9211(450V~4MM ²)	1
35	82300342	EMC Filter	S.EMC.HPD120C.1	1
36	80712873	Electrical box	Black gloss 9005	1

Contact details

HeatPumps4Pools Ltd
Unit 3 Sovereign Business Park
Cranes Farm Road
Basildon
Essex
SS14 3JD
United Kingdom
Tel +44 1268 206560
www.HeatPumps4Pools.com
enquiries@heatpumps4pools.com

