

ITEM : 09525 Electronic Sport Fishing
Instruction Manual
11/31/2020

Revised for
- Update legal line
- Add UKCA info

The Basic Fun, Inc.

ARTWORK APPROVAL

10 APR 2025

Approved & dated by: _____

ENG _____

QA/QC _____

the bridge direct inc. Product Line: Electronic Studio: HK in-house - RAY

Customer: _____ Vendor: _____

Item No.: 09525 Version: US Revision: _____

Description: Fishing Game

Color(s): **KA** PMS (if any): _____ Coating: UV

Dimension (Width x Height x Depth): _____

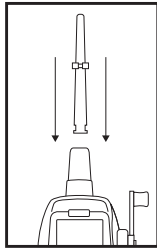
Primary Display Panel (PDP) Size: _____

Printing Instructions (if any):
 Instructions
 100gsm art paper



INSTRUCTION MANUAL

ATTACHING EXTENSION

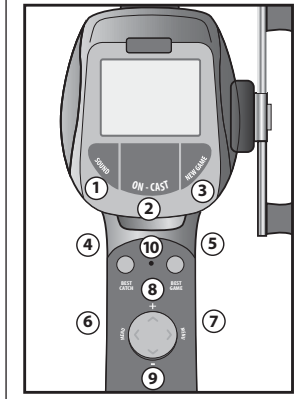


STARTING THE GAME:

To get started, press the ON/CAST button to turn on the screen. You are now ready to cast your line!

Before you cast, you can also change your LEVEL, AREA, and LURE type. This is done by pressing the LEFT or RIGHT buttons on the D-PAD.

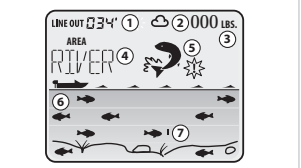
To scroll through the different options in each menu, press the + and - buttons.



BUTTON FUNCTIONS

- SOUND** – Press this button to select between OFF, LOW volume, and HIGH volume.
- ON/CAST** – this is a multi-function button that is used to turn on the game, and cast the fishing line when held down.
- NEW GAME** – Press this button to start a new game.
- BEST CATCH** – Press this button to display the best individual catch.
- BEST GAME** – Press this button to show the highest number of fish caught (and total weight) in a single game.
- MENU LEFT** – D-pad controller button used to move the menu setting to the left.
- MENU RIGHT** – D-pad controller button used to move the menu setting to the right.
- + (PLUS)** – D-pad controller button used to toggle the sub-menu options.
- (MINUS)** – D-pad controller button used to toggle the sub-menu options.
- RESET**

SCREEN FUNCTIONS



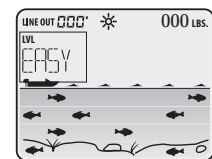
- LINE OUT** – Indicates how far your line is currently cast.
- WEATHER** – Indicates the current weather conditions in your fishing area. (CLOUDY, PARTLY CLOUDY, SUNNY)
- WEIGHT STATS** – Indicates the weight of your current catch.
- TEXT AREA** – Displays all the settings for the menu: LEVEL, AREA, and LURE. Also displays your best game: including the total amount of fish and total weight.
- FISH ICON** – Indicates that you have hooked a fish on the line.

- SONAR** – Displays the current area and the amount of fish.
- LURE** – Indicates where your line is immediately on the screen.

MENU OPTIONS

LEVEL/DIFFICULTY

There are three difficulty levels in Sport Fishing: EASY, MEDIUM, and CHALLENGING. In the more difficult levels, there will be fewer fish to catch, and you will need to act faster when you get a bite!



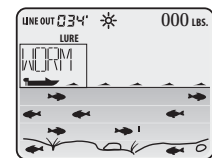
AREA

The game has five bodies of water you can play through: STREAM, RIVER, SMALL LAKE, LARGE LAKE, and DEEP SEA. Each body has different fish types you can catch. However, some fish are specific to only one body of water. For instance, Largemouth Bass won't show up in the STREAM area. Play through the levels and see what you catch!



LURE

Play with different lures when fishing in different areas and weather conditions, and see what works for you. There aren't any hard rules for what lures work to get more fish!



Lure Name	Weather
Trout Worm	All
Blue Fleck Firetail	Sunny
Red Shad	Sunny
Fuzz-E Grub	All
Jig & Pork	Sunny
Skirted Jig – Chartreuse	Sunny
Tandem Nickel – Fire Tiger	Cloudy
Single Copper	Cloudy
Shallow – Red Crawfish	Cloudy
Medium – Silver Shad	Cloudy
Goggle Eye	All
Squid	All
Blue Runner	All
Mackerel	All

GAMEPLAY

When you've selected all your preferred menu options, it's time to start fishing! To cast, hold down the ON/CAST button, and flick the unit forward. Note that the longer you hold down the ON/CAST button, the further the line will go.

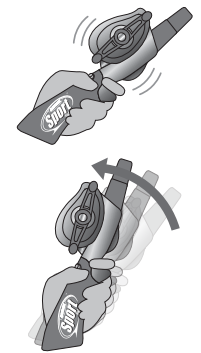


There will be a splash sound effect to show that the line has hit the water. The lure will sink to the bottom if there is no movement.

How slow or fast you reel your line will determine how it moves across the water. If you crank the reel quickly, the lure will rise and move across the water, closer to the top. By doing a slow crank, the lure will drag across the bottom, until it gets under the boat where it will then pull up. Use this information when planning your catch!

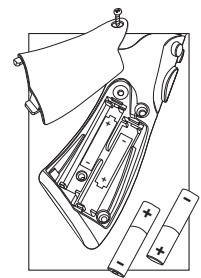
When a fish bites your lure, the game vibrates and the FISH ICON displays on the screen. When this happens, quickly jerk the unit back toward you to try to set the hook.

If you are able to set the hook, you will hear a reeling sound effect play. You will be able to crank and reel your catch in.



BATTERY INSTALLATION

- Using a Phillips/cross head screwdriver (not included), loosen screws in battery compartment cover (screws stay attached to cover.) Remove cover.
- Insert 2 x 1.5V "AAA" size batteries. Alkaline batteries recommended. Replace cover and tighten screws.



FCC STATEMENT

This device complies with Part 15 of the FCC Rules. Operation is subject to the following two conditions: (1) this device may not cause harmful interference and (2) this device must accept any interference received, including interference that may cause undesired operation.

WARNING: Changes or modifications to this unit not expressly approved by the party responsible for compliance could void the user's authority to operate the equipment.

NOTE: This equipment has been tested and found to comply with the limits for a Class B digital device, pursuant to Part 15 of the FCC Rules.

These limits are designed to provide reasonable protection against harmful interference in a residential installation. This equipment generates, uses, and can radiate radio frequency energy and if not installed and used in accordance with the instructions, may cause harmful interference to radio communications. However, there is no guarantee that interference will not occur in a particular installation. If this equipment does cause harmful interference to radio or television reception, which can be determined by turning the equipment off and on, the user is encouraged to try and correct the interference by one or more of the following measures:

- Reorient or relocate the receiving antenna.
- Increase the separation between the equipment and receiver.
- Connect the equipment into an outlet on a circuit different from that to which the receiver is connected.
- Consult the dealer or an experienced radio TV technician for help.

Please keep these instructions for future reference as they contain important information pertaining to this item.

BATTERY INFORMATION

- Do not mix alkaline, standard (carbon-zinc), and/or rechargeable batteries.
- Do not mix old and new batteries.
- Non-rechargeable batteries are not to be charged.
- Rechargeable batteries are only to be charged under adult supervision.
- Rechargeable batteries are to be removed from the toy before being charged.
- The supply terminals are not to be short-circuited.
- Different types of batteries or new and used batteries are not to be mixed.
- Batteries are to be inserted with the correct polarity.
- Exhausted batteries are to be removed from the toy.
- Dispose of batteries safely.
- Do not dispose of batteries in fire. Batteries may explode or leak.
- Dispose of used batteries properly.
- Do not incinerate used batteries.
- Dispose of battery in accordance with your local battery recycling or disposal laws.
- You can return an old product to your retailer when you buy a similar new one. For other options, please contact your local council.
- Do not dispose or discard batteries as unsorted municipal waste, otherwise, it can leach toxic components, contaminate groundwater and spread through the food chain, impacting the environment and human health.

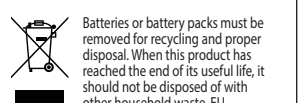
- Please check with your local or state solid waste authority to know how to handle the waste batteries safely.
- Do not dispose of used batteries with other household waste. Please send the used batteries to battery recyclers or local collection points. For more information, please consult your municipal collection point or national collection scheme.

CARE AND MAINTENANCE:

- Always remove batteries from the product when it is not being used for a long period of time.
- Keep the product away from direct heat. Do not submerge the product in water. This can damage the electronic assemblies.



The Basic Fun logo, product and package design © 2025 BASIC FUN, INC. BOCA RATON, FLORIDA 33431, USA.
 www.basicfun.com. TEL: 1-561-997-8901.
 All rights reserved. Basic Fun products are safety tested and comply with ASTM F963. Manufactured under license. MADE IN CHINA. Patent pending. Each sold separately, subject to availability. Colors and styles may vary from photos as we continue to modify and improve our products. **ADULTS NOTE:** Remove all tags and plastic fasteners before giving toy to child. Please keep this instruction sheet for future reference. **WARNING!** Not suitable for children under 36 months. Small Parts. Choking hazard.



Batteries or battery packs must be removed for recycling and proper disposal. When this product has reached the end of its useful life, it should not be disposed of with other household waste. EU legislation for Electrical and Electronic Equipment and Batteries, required these to be sent to local collection points or recycling centre so that they can be treated using the best available recovery and recycling techniques. This will minimize the impact on the environment and human health from soil and water contamination by any hazardous substances, decrease the resources required to make new products and avoid using up landfill space. Please do your part by keeping this product out of the municipal waste stream! The "wheeled bin" symbol means that it should be collected as "waste electrical and electronic equipment" You can return an old product to your retailer when you buy a similar new one. For other options, please contact your local council.



Item# 09525
 K'NEX UK LTD., 200 BROOK DRIVE, GREEN PARK, READING, RG6 2UB, ENGLAND.
 K'NEX/Basic Fun C/O Regional Express GmbH Darmstadter Landstr. 116 60598 Frankfurt, Germany.

PAPER SIZE: 11" W x 6.5" H (279 mm x 165 mm)