



RECO  
SURFACES



# Installation Guide

# Installation Guide

Please read the full Installation Instructions before starting work. A fitting video is also available online.

Please use the fitting materials and fixing method as specified below and supplied by Reco Surfaces to validate the 10 year Guarantee.

NB: Panels supplied rolled must be removed from their packaging within 4 hours of receipt. Then carefully counter rolled before placing flat and weighted down to ensure a flat panel.

## Materials Required

---

**Adhesive** (290 ml tube or 600 ml barrel gun sausages) - MS High grab, gap fill adhesive. To ensure good adhesion.

**Silicone** (300 ml) - Anti-fungal Colour matched, or Clear, for joints, corners and finishing seal.

**Reco-Seal Tape\*** (20m or 50m) - Double-sided, high strength joint sealing tape.

A) To assist positioning of panels.

B) To create flat and level joints between panels

C) To create a waterproof 'backing seal' to the joint

## Dependant on wall surface these may also be required

---

**Backing Strips.** (50 mm wide x 2500mm long) to be used:

A) Flat – adhered at panel joints on un-level walls, such as brick or block work, before fitting panels to ensure a level waterproof join between the panels.

B) Folded into a 90 degree angle – then adhered to either internal or external corners which are out of line, before fitting panels and to avoid scribing (cutting the panel to fit the wall). Or for extra joint waterproofing.

**Edging Strips.** Used at external corners around windows or boxing in of pipework (where you might have an exposed cut edge of the panel).

These are available from our website in chrome or PVC. Other standard 3-5mm or 'L' shape trims will also work.

## Tools Required

---

### D.I.Y

- Fine tooth hand saw
- Stanley knife or Jigsaw cutter (for PVC)
- Hand adhesive and sealant gun 300ml
- Spirit or laser level
- Long straight edge & surface marker
- Small block plane or wood scraper
- Sand paper
- Extending paint roller
- Gloves for handling sharp panel edges

**Additional:** For plug sockets, etc. – a drill and jigsaw

### Professional

- Hand or powered track saw
- Hand or powered 600ml sausage gun
- Vertical and horizontal laser
- Extending paint roller
- Thermo-former or grooving tool, if required

**Additional:** For holes/plumbing - a power drill & hole saw

## Pattern

---

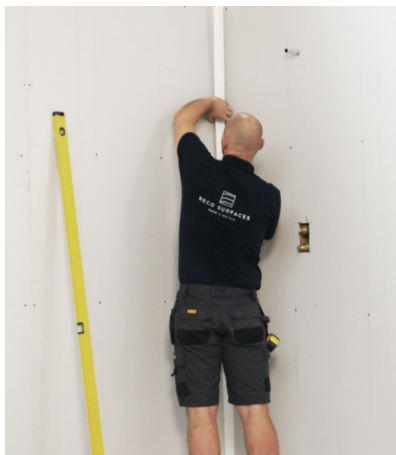
Panels may be fixed vertically or horizontally. However in the case of Reco Tile, because the tile design height and width may be different, we recommend fitting adjoining panels in the same orientation. NB: Check website for Reco design panels as not all designs are repeatable.

## Panel Conditioning

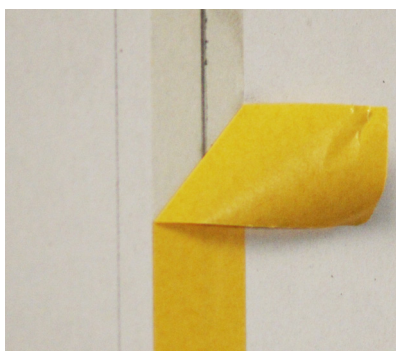
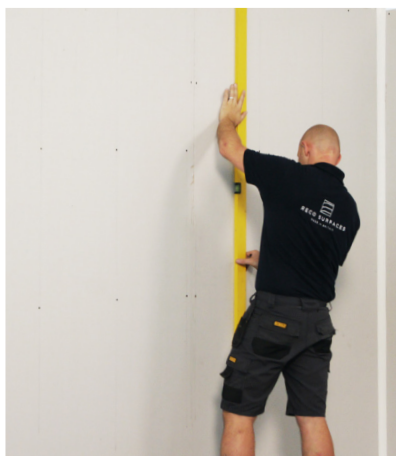
---

Panels must be stored flat for a minimum 12 hours and fitted at their approximate service temperature or a minimum ambient temperature of 18°C. At no time during storage, installation and after fitting should the panels be subjected to extreme temperatures.

## Step One: Wall Preparation



## Step Two: Setting Out Multiple Panels On One Wall



**Please Note:** Tanking compound or waterproof backing panels are not required.

The panels can be fitted to any reasonably level surface including existing tiles. New plaster or block-work must be dry and coated with PVA. See page 6 for further info.

### Corners

---

To keep both Tile and Patterned panels perfectly in line, External and Internal corners should be **plumb vertical**.

#### If not:

Reco Backing Strips (50 x 2500mm) should be fitted to avoid the need for extra care in trimming and scribing the panels to fit the walls.

For an Internal corner, Before folding to the required angle apply Reco-Seal tape to the front face of the backing strip, but do not remove the front gold cover strip until step 4 –Final Fixing. For both Internal and External corners, apply Reco gap fill adhesive to the back of the strip and to both walls to fill any gap. Use a level and also packing strips if required. Allow the adhesive to set while you continue to the next step.

### Vertical Alignment

---

Panels must be fitted plumb vertical to maintain the tile and pattern lines.

### Marking Out Your Datum Panel

---

To ensure your tiles or design panels are evenly balanced across the wall, establish the centre point of your main wall. **Mark this centre line plumb vertical on the wall and take all measurements from this.** Then mark the position of both vertical edges of this central datum panel. Always fit this panel first ensuring that it is fixed plumb vertical and Horizontal.

Then working left and right from the outside edges of your Datum Panel, draw on the wall surface the position of the outside edge of your next panel. Assume end panels will be reduced in width to fit into internal corners.

Alternatively if you are not concerned about the final cut tile or end of the panel / design balancing across the wall, then you can start in the corner with a plumb level panel and work around the room.

### Backing Strips

---

For corner showers and installations where backing strips have been fitted the corner panel can act as a datum panel as it will be plumb.

### Reco Seal Tape

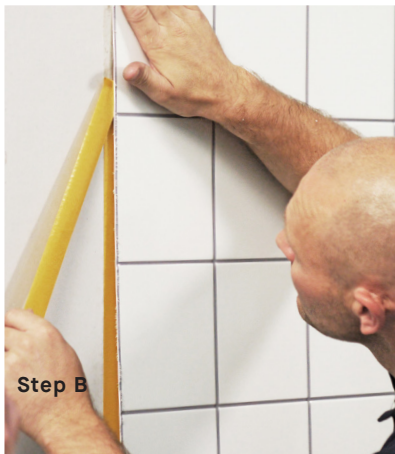
---

Apply the seal tape 50/50 over the centre of each of the vertical lines you have marked on the wall. Peel back a short length of the gold covering on the face of the tape at the top and bottom to see the marked line when fixing and allow removal later.

## Step Three: Trimming/ Scribing All Panels



## Step Four: Fixing Panels



**Important:** Panels must not be fitted too tight between each wall. A small gap must be left between panels of 2mm and 3-4mm in the corners and at the top and bottom (unless in a shower or bath area where they can rest on the lip). This is to allow for a small amount of expansion. For Reco Design panels with a continuous design you can butt the panels up along the wall but allow extra room in the corners and between the panel and ceiling. These gaps will later be filled with sealant (see Step 5).

### Cutting

---

**Important:** Panels must be cut face up.

**Acrylic Panels** (Standard Reco Tile, Reco Gloss plain colour panels)

Mark the line on the face of the panel. Use a straight edge and sharp Stanley knife and scribe along the line using light then medium pressure for a total two or three passes. Then, supporting the panel close to the line, exert downward pressure to snap off the excess material.

**P.V.C Panels**

(Reco Tile PVC, Reco Design, Reco Clad Marble designs, Reco Protect)

Should be cut with a fine tooth hand, jig or circular saw. A track mounted saw is ideal. Edges can be further trimmed with a small block plane, wood scraper or sand paper.

### Shower or Bath

---

The panel should rest on the top of the flat edge or at the bottom of the rounded edge of the Shower Tray or Bath. It is advisable to put a large bead of silicone on the edge of the bath or shower tray to bed the panels down in.

**Before fixing a Tile panel peel back a small amount of the clear removable protection film from all four edges so sealant can be applied later. Then peel back the top of the reco seal tape and fold to the side to allow easy removal later. Important:** Reco Design, and Reco Protect panels do not always have this removable protection film. Please check for labels or with Reco technical help line; do not try to peel back the coating as it will not be replaceable under the guarantee.

#### Step A) Adhesive

Apply the adhesive in vertical lines approximately 60mm apart from the top to the bottom of the panel. **DO NOT DOT AND DAB** or pool the adhesive in one place. Adhesive is best applied to the panel. Where space does not allow, it can be applied to the wall.

#### Step B) Apply the panel

Push the panel onto the wall and ensure you have good contact all over. Once you are happy with the position of the panel then pull the tape cover away from behind the panel and then push the panel onto the tape around its perimeter. If you can't reach the top of the panel use an extendible paint roller to ensure good contact all-over. **NB: If you do not ensure full contact across the whole panel it might cause a flexible gap that will affect the quality of the finish.**

#### Step C) Sealant bead

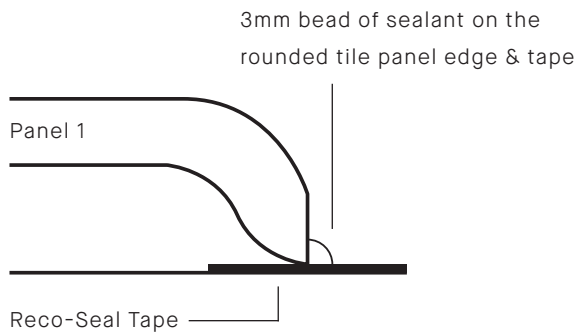
Before fitting the next panel run a small 3mm bead of sealant down the joint of the Reco Seal tape and the outer edge of the panel. (See Fig below).



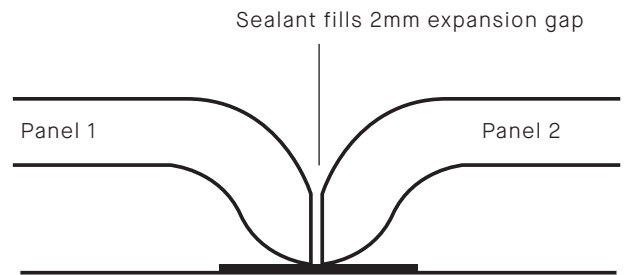
#### Step D) Next Panel

Fit the next panel to the wall in the same way as the first working from the base and aligning the edge with the first panel and onto the sealant. Remove any excess sealant from the face of the panel using a sealant tool or a wipe.

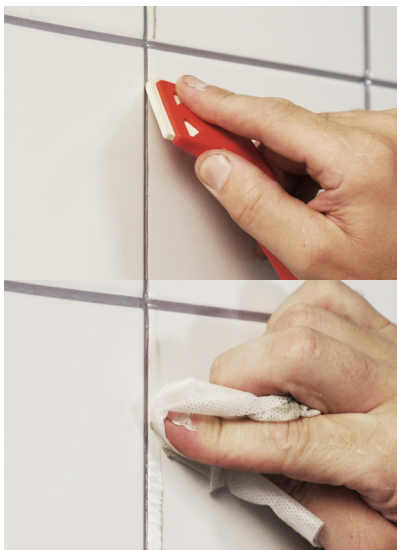
When installing Reco Design or Reco Protect you may want to have a butt joint to ensure continuous design. In wet areas it is still important to have clear silicone in the joint. Apply the bead as above and then butt the panels together and remove any excess from the face of the panel.



NB: Illustration of Reco Tile panel. Reco Design and Reco Protect are flat backed with no rounded edge.



Push Panel 2 up to Panel 1 to create a 'double seal' with the tape behind and silicone in front of the joint.



On tile panels, for best appearance use a clean finger and water in a spray bottle to remove sealant to the base of the tile groove (radius) but ensure no gaps appear in the seal. Remove all excess sealant when first applied before it starts to set.

**Tip For Reco Tile:** To ensure you have an even gap from the top to the bottom insert a 2mm nail, screw or tile spacer between the panels in a few places after the silicone has been applied. Once the adjoining panel has been pushed onto the wall remove the spacers and smooth / remove the silicone.

**Important:** Do not forget that a 3mm gap must be left around the panels at the top, bottom and in the corners to allow for expansion and contraction during seasonal changes in temperature. Do not fit the panels tightly across the room or they will expand and come free from the wall. You must also allow the panels to cure fully on the wall before engaging air conditioning or heating changes.



#### External Corners

Reco Edging Strips (30 x 3000mm) are available in white, sand or chrome from our website and can be used to cover the cut edge of the panels when fitting around a window or where boxing in has been used to conceal pipe-work etc. Alternatively, right angle aluminium edge strips or 6mm tile trims can be used.

For tile panels you can also use the moulded rounded outer edge of the panel instead of an edge strip. The rounded edges fit perfectly together (one behind the other) making a neat finish. Backing strips (see above) can be used to ensure the corner is plumb first.

## Step Five: Final Seal

Silicone along the full length of internal corners and at the base and top of the panel. Take care to ensure any gaps have been filled between the panels. Shower controls and pipework should be sealed by silicone before face plates are fixed over the panel.

Remove all excess sealant when first applied before it starts to set.

Finally, remove the remaining clear protective film from the body of the panel.



## Other Install Notes & Tips

### Wet Floor Installation

---

The thickness of Reco Panels are ideal for Wet-room walls. Fit the wet floor first and the Reco Panel over the face of the flooring up-stand using MS adhesive. Ensure at least a 30 mm overlap. Further instructions available on request

### Kitchen splash-backs

---

Reco panels can be fixed behind electric or kinetic hobs as long as the distance from the back of the hob and the panel is at least 80mm. For gas hobs or panels closer than 80mm then a piece of toughened glass should be fixed over the panel.

### Wall Preparation

---

#### Surfaces

Loose paintwork should be removed and the surface well abraded and then washed to remove dust. To maximise Reco-seal tape and panel adhesion. Plywood, chipboard, M.D.F and plasterboard should be treated with diluted PVA. Recently applied plaster must be dry and PVA treated.

#### Existing Tiles

At only 2 to 3mm thick Reco panels are ideal to fit over existing tiles. Tiles should be cleaned to remove grease etc., be reasonably level and any large areas of loose tiles re-fixed. (This saves time, cost, mess and avoids resultant landfill of tile waste).

#### Flat Walls

Care should be taken to create a reasonably flat wall surface. Particularly along the length or width where panels will join. If fitting over existing tiles and replacing a bath with a shower make up the wall level where the bath was with plywood of required thickness.

#### Caravans, Mobile Homes, Boats, Modular units, Pods

If fitting in these and other situations where panels may be exposed to movement jolts and extremes of temperature, apply adhesive at 30 mm rather than 60 mm spacing and regularly check sealant for fractures. Remove sealant and replace if needed.

## Adhesive

---

In cold conditions the adhesive will flow easier if previously heated by placing the unopened tube in hot water for 5 minutes. When applying the outer beads of adhesive they should be no closer than 30mm from the panel edges to avoid adhesive getting on the Reco-Seal tape and fingers while positioning and then onto the panel face.

## Line Bending Internal & External Corners

---

For professional installation we recommend use of a heated line bender as an alternative to profiles. Note that Reco Protect can be line bent without heat if stored and fitted at over 18°C and lightly grooved on the back at point of bend.

## Cleaning

---

Simply wipe the surface using a mild detergent and damp cloth, then rinse well with warm water. Ensure bathroom is well ventilated to avoid the potential of the growth of mould. Exceptional marks may be removed with stronger cleaners and a damp Scotch pad. Do not use scouring pads which may damage the scratch resistant surface. Light scratches on gloss and satin panels can be removed with multi surface spray polish.

## Replacement & Recycling

---

At only 2-3 mm thick replacement Reco Panels can be easily fitted over the previous surface or Reco panel. They are also designed to be recycled at the end of their life with minimal damage to the surface behind and a new panel fitted.

Reco Tile panels (in acrylic) off-cuts can be placed in the recycling bin. PVC Panels (Reco Design, Reco Gloss Marble designs & Reco Protect) can be returned to Reco Surfaces for recycling or PVC recycling centres across the U.K.

## Fire Resistant Panels

---

All PVC Reco panels (Reco Tile PVC, Reco Design, Reco Gloss Marble designs) are manufactured from BS476 PART 7 CLASS 1 and DIN 4102 CLASS B1 OR B2 materials. They must be attached to plasterboard or equivalent FR rated material to meet the BS476 Class 1 standard.

## Care Instructions & Guarantee

---

The panel is guaranteed against faulty materials or manufacture for a period of 10 years, providing it has been installed and maintained in accordance with the manufacturer's instructions and subject to normal wear and tear.

**It is the responsibility of the installer to ensure that he has adhered to the above instructions and taken all possible steps to achieve a fully satisfactory installation.** Claims under guarantee will be investigated fully and breaches in installation technique or cleaning will void the guarantee. The user must also read and retain the Care Instructions and Guarantee.



Head Office:  
Enterprise House  
Priory Road, Frieston  
Boston, Lincolnshire  
PE22 0JZ

+44 (0) 330 088 2087  
info@recosurfaces.com  
www.recosurfaces.com

See [recosurfaces.com](http://recosurfaces.com) for full terms and conditions of purchase and guarantee.  
Patents granted and pending on Reco Panels and fitting system.