

Processing instructions – 3D Wallpaper

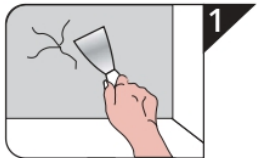
Preparation

Measure your wall to determine how much material is needed. Add on 10 % for excess.

Temperature: room temperature from 20–22°C

Tools required: Utility knife, ruler, pencil, measuring tape, wall or wallpaper adhesive; optional: smoothing blade, paint roller

Surface preparation



1 The surface must be clean, even, free of dust, oil, grease, holes and tears, and permanently dry. Any unevenness must be evened out using a suitable filler. Fill any unevenness (> 0.5 mm), holes, cracks, joints (> 3 mm)

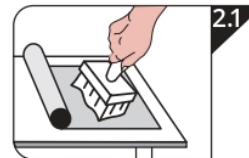
Do not apply: outdoors, behind ovens, radiators, gas stoves with open flames or in rooms with constant sunlight (e. g. conservatories).

Cleaning and care

Cleaning can be carried out using gentle, standard liquid cleaners, soapy water or similar. Then rinse the wall covering thoroughly with clean water.

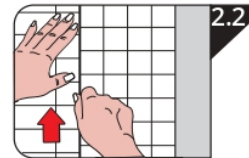
Caution: Avoid acetone, mineral spirits and direct heat at all times.

Processing

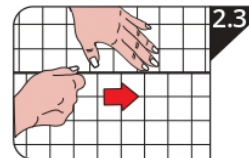


2.1 Cut the first sheet to size. Apply 3D Wallpaper adhesive evenly to the back of the 3D Wallpaper.

Position and align the first sheet. Position the next sheets end-to-end repeatedly and press them down. Avoid protruding edges in room corners.



2.2 **Caution:** Remove any spots of adhesive immediately with clean water.



2.3 Especially in wet rooms, it is essential to ensure that all edges and seams are sealed with silicone (for PVC wallpaper). This prevents moisture from penetrating. Air the room well afterwards!

