

Processing instructions – Wall Tiles (15,25 cm × 15,25 cm)

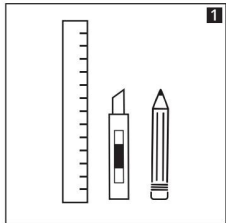
Preparation

Measure your wall to determine how much material is needed. Add on 10 % for excess.
For each design, the batch numbers on the back of the carton should be compared when purchasing.

Acclimatization: store for 24 hours in the room in which the Self-adhesive Wall Tiles are being installed

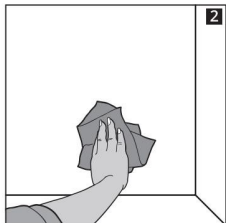
Temperature: room temperature from 20–22 °C

Tools required



Utility knife, ruler, pencil, measuring tape;
optional: smoothing blade, paint roller

Surface preparation

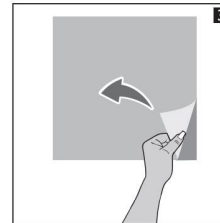


The surface must be clean, even, free of dust, oil, grease, holes and tears, and permanently dry. Any unevenness must be evened out using a suitable filler.
Smooth surfaces such as wall tiles are suitable for application.

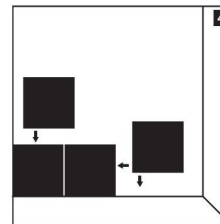
Do not apply: outdoors, behind ovens, radiators, gas stoves with open flames or in rooms with constant sunlight (e.g. conservatories).

Optional: Use primer for greater adhesive strength

Application



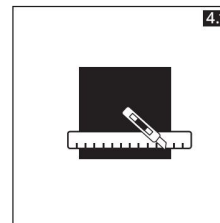
Peel off the backing paper



Position the first tile in the lower left-hand corner and press it onto the wall, applying even pressure over the entire surface.

Tools: Smoothing blade or clean paint roller
Apply the next tile edge to edge, leaving no gaps.

Cut the tiles at the edge using a utility knife.
If necessary, cut the wall tiles to size by using a ruler and running a utility knife along them two or three times.
Full adhesion is achieved after 24 hours.



Cleaning and care

Wait five days before cleaning the Self-adhesive Wall Tiles for the first time.

Clean the wall tiles with a gentle, standard liquid cleaner or soapy water and rinse thoroughly with clean water.

Caution: Avoid acetone, benzene and abrasive cleaning agents and sponges.