

KRAUS®

WALL DÉCOR - REFINED LIVING COLLECTION

ACOUSTIC PANELS

ALDER GREY

WDPLUX003



600 x 2400mm Acoustic Panel

01283 245430

KRAUSFLOORING.CO.UK

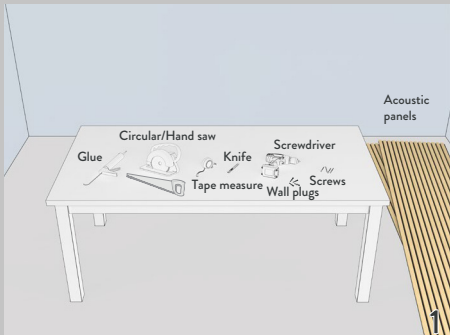
For indoor use only, not suitable for high moisture areas. Fixings not included



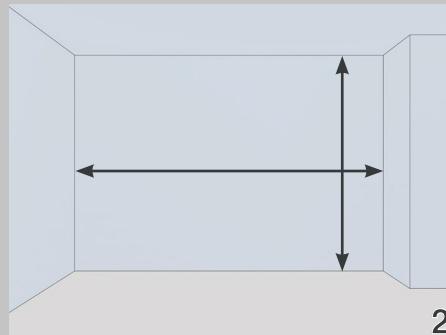
QEP Co. UK Ltd., The Maltsters, Wetmore Road, Burton upon Trent, DE14 1LS
PRCI SAS - Groupe QEP, Avenue du Moulin De La Jasse, BP 30, 34750 Villeneuve Les Maguelone, France

KRAUS®

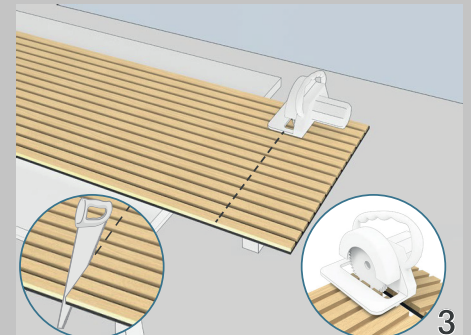
INSTALLATION INSTRUCTIONS



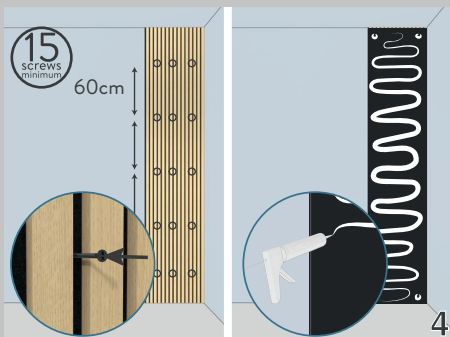
Step 1: Prepare all the tools and materials you need.



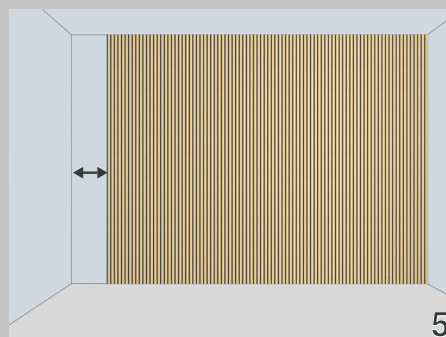
Step 2: Measure the height and width of the wall. The wall intended to have the panels should be straight, smooth, dry and free from dust and fixings.



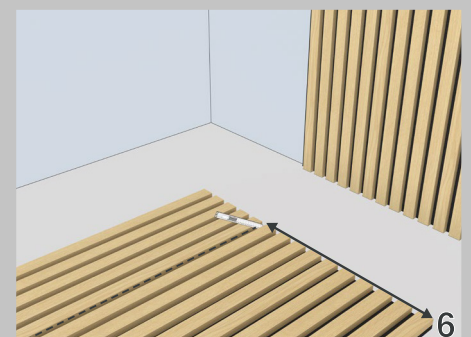
Step 3: Cut the acoustic panel according to the height of the wall. Also cut slots for light switches and other installations at this stage.



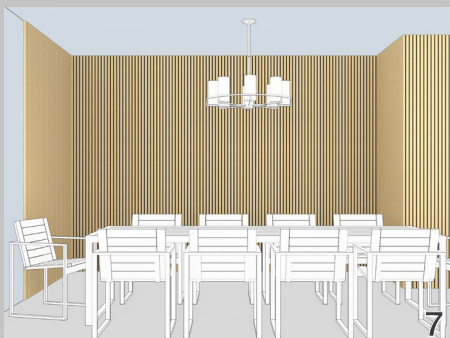
Step 4: Place the acoustic panel on the wall and affix to the wall using one of the below methods.



Step 5: Install in turn. Once a full panel will not fit, measure the remaining space to the corner.



Step 6: Cut the acoustic panel to fit the remaining width and install as normal.



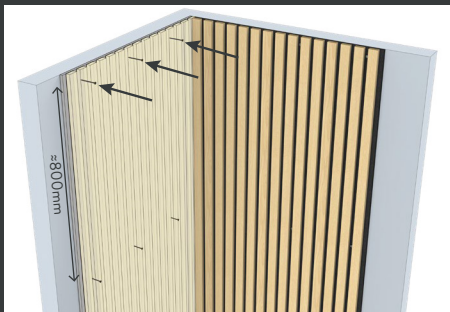
Step 7: Complete the installation.

If televisions, shelving or decorative items are going to be mounted in front of the acoustic panels, the fastenings/fixings supplied with the brackets must be long enough to go through the entire panel and far enough into the wall behind it to provide support. If the fastenings/fixings are not long enough to ensure the wall is supporting the weight, cut a hole the size of the bracket in the panel, at the desired position, prior to mounting the panel to the wall. It is recommended to mount particularly heavy items; such as a large television, mirrors or cabinets; directly to the wall even if the fixings are long enough to mount through the panel. Mounting objects to the panel is likely to damage the panel and cause the mounted objects to fall.

If using method B, wait 24 hours after installing the panels to allow to the adhesive to fully set.

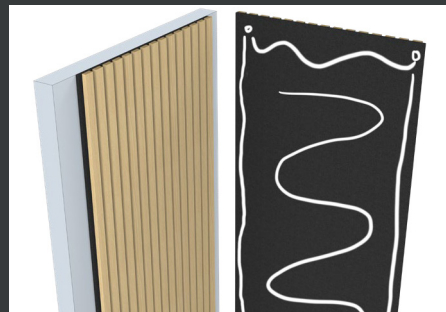
DO NOT MOUNT OBJECTS TO THE PANEL ITSELF.

INSTALLATION METHODS:



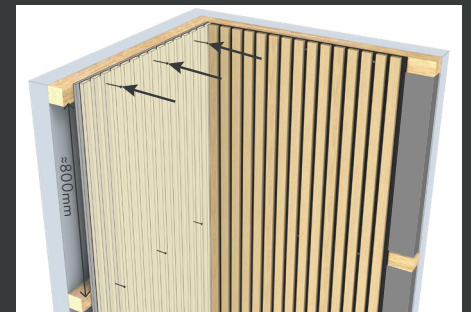
Method A: For easy installation, drill small guide holes into the wall through the felt. Remove the panel from the wall and drill holes to the right width/depth for the fixings. Insert an appropriate anchor system into the wall, screw the acoustic panel in place using the guide holes. Leave a 800mm gap between each row.

Sound absorption: **25%**



Method B: Attach acoustic panels to the wall with nail-free glue. Make sure the wall is clean, dry and dust free as these may prevent adhesive setting properly. It is recommended to remove wall paper prior to using this method so the panel is glued directly to the wall itself.

Sound absorption: **25%**



Method C: Mount horizontal battens placed 800mm apart to the wall using the appropriate anchor system. Stuff the gap with an appropriate insulation material (e.g. mineral wool) and screw the panel to the batten. Either finish with a cut down panel, another material or continue to an internal corner to hide the insulation material.

Sound absorption: **60%**

FOR INDOOR USE ONLY, NOT FOR WET OR HIGH MOISTURE ENVIRONMENTS

Screws available at krausflooring.co.uk