

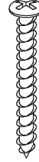
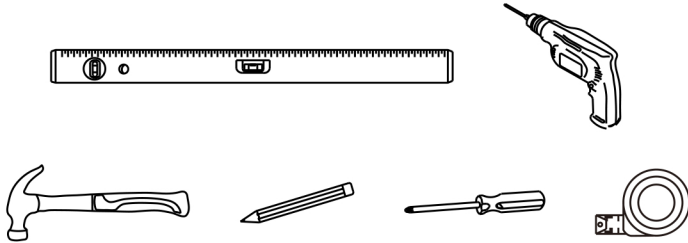


# showerdrape

## Bathroom Accessories of Distinction

Thank you for buying the Bathroom Mirror. Please read all literature carefully before attempting to install.

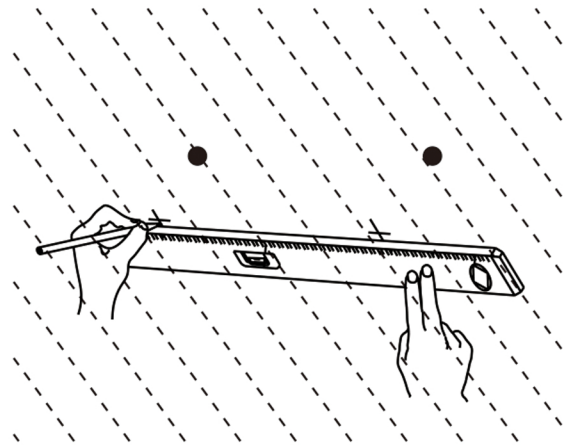
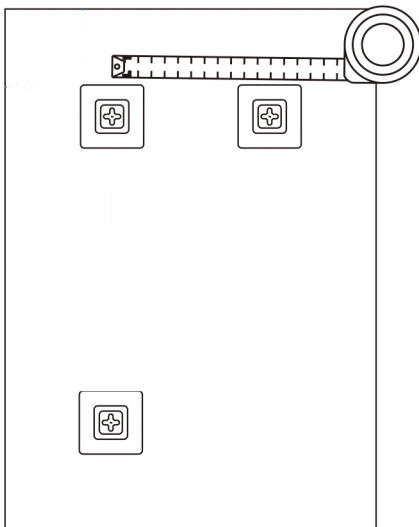
### You will need



Wall Plug x2

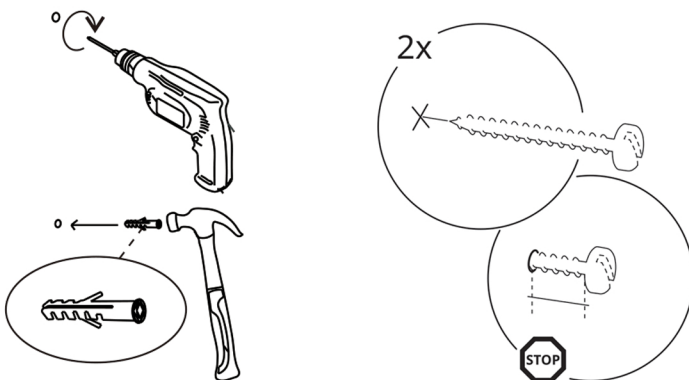
Wall Screw x2

1.



Measure the distance between the centre of the fixing brackets (depending on the orientation)  
Using a spirit level, mark with a pencil on the wall/surface where holes are to be drilled.

2.

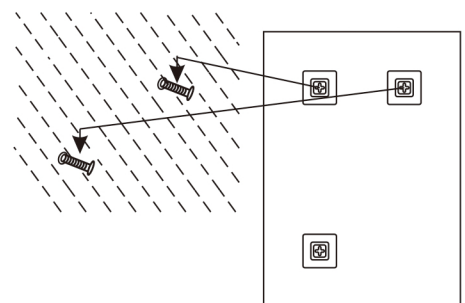


Drill into the wall slightly deeper than the length of the wall plug.  
Tap in wall plugs using a hammer. Using a screwdriver, screw in the wall screw leaving **no more than 3mm**.

**NB. If the screw protrudes more than 3mm it may scratch or damage the back surface of the mirror when trying to mount it.**

3.

Carefully hang mirror onto wall screws



### ⚠ Please Note:

The wall plugs and screws supplied with this cabinet are not suitable for all wall types. Please check before installation, as it may be necessary to purchase alternatives.