



STAINLESS STEEL 4 SLICE TOASTER

with high lift lever

User Manual



*Please refer to the warranty section for terms of your extended guarantee

READING AND STORING THE USER MANUAL



Before using this product, please read through this manual carefully paying particular attention to the safety instructions. Failure to do so may result in personal injury or damage to the product.

Carefully save this instruction manual for future reference. Ensure the user manual is included when passing the product on to any third parties.

IMPORTANT SAFETY INSTRUCTIONS FOR PROPER USE

When using electrical appliances, basic safety precautions should always be followed.

Only use the product as described in this user manual. Any other use is considered improper and may result in damage to property or persons. The manufacturer or vendor cannot be held liable for damages or injury incurred through improper or incorrect use.

- **Read and familiarise yourself with all operating instructions before using this Toaster.**
- Before plugging your unit into the mains, visually check that the unit is intact and has not suffered any transit damage.
- The bread may burn, therefore do not use the toaster near or below combustible material such as curtains or cupboards.
- **DO NOT** use this toaster with an external timer or separate remote-control system or any other device that switches the toaster on automatically.
- The Crumb tray must be removed and emptied regularly.
- The outer surface may get hot when the appliance is operating.
- **DO NOT** use this toaster with an extension cable.
- Check that the voltage indicated on the data plate corresponds with that of the local network before connecting the appliance to the mains power supply.
- This appliance can be used by children aged from 8 years and above and persons with reduced physical, sensory or mental capabilities or lack of experience and knowledge if they have been given supervision or instruction concerning use of the appliance in a safe way and understand the hazards involved. Children shall not play with the appliance. Cleaning and user maintenance shall not be made by children unless they are older than 8 and supervised.



- Keep the appliance and its cord out of reach of children less than 8 years.
- **DO NOT** immerse the appliance or its cord in water or any other liquids.
- **DO NOT** leave the appliance unattended during use.
- **DO NOT** leave the appliance unattended whilst connected to the mains supply.
- Always use this appliance on a solid, level, non-flammable surface.
- **DO NOT** use this appliance outdoors.
- It is imperative to unplug the power cord after the appliance has been used, before it is cleaned and whilst being repaired.
- Repairs to electrical appliances should only be performed by qualified personnel. Improper repairs may place user at serious risk.
- **DO NOT** operate this appliance with a damaged plug or cord, after a malfunction or after being dropped or damaged in any way.
- Regular, periodic checks should be carried out on the mains cable to ensure no damage is evident. Should there be any signs of damage the appliance should not be used.
- If the power cable is damaged, it should only be replaced by the manufacturer or a suitable qualified after-sales-service in order to avoid a hazard
- **DO NOT** allow the mains cable to hang over sharp edges or come in contact with hot surfaces.
- **DO NOT** run the mains cable under carpets, rugs, etc.
- Allow the unit to cool before storage.
- Before cleaning, disconnect the appliance from the mains supply and allow to cool.
- This appliance is intended for household use only and should not be used for industrial purposes.
- **DO NOT** use any accessories or attachments with this appliance other than those supplied or recommended by supplier.
- **DO NOT** use this appliance for anything other than its intended use.
- **DO NOT** push objects into any openings as damage to the appliance and/or electric shock may occur.
- Unplug after each use. Grasp the plug, not the cord.

THIS APPLIANCE MUST BE EARTHED

NB During the first few minutes of initial use, you may notice a slight odour and a little smoke. This is normal and will quickly disappear, It is the coating applied to the heating elements to prevent any corrosion during transit.

- **PLEASE NOTE:** Before use, ensure that the Toaster is used in an open, well ventilated area well away from other appliances and other obstructions.
- **DO NOT** use the Toaster in front of, near or below combustible materials such as plastics, curtains or cupboards, etc.
- **DO NOT** place the appliance against a wall or against other appliances. Leave at least 10cm minimum free space on the back and sides and 10cm minimum free space above the appliance.
- **DO NOT** place anything on top of the appliance.
- **DO NOT** operate the Toaster with the Crumb Tray removed.

Explanation of Symbols

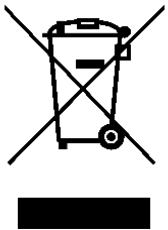
The following warning symbols or words are used in this instruction manual:



Products labelled with this symbol conform to applicable provisions of the European Economic Area.



Products labelled with UK Conformity Assessment identifies products conforming to UK statutory requirements.



You should now recycle your waste electrical goods and in doing so help the environment. This symbol means waste electrical products at the end of their useful life should not be disposed of with normal household waste and sent to landfill. Please ensure it is taken to a suitable facility for disposal. Check with your Local Authority or retailer for recycling advice or visit www.recycle-more.co.uk, enter your postcode to find out your nearest recycling site.



This symbol provides useful additional information on the use of this product.

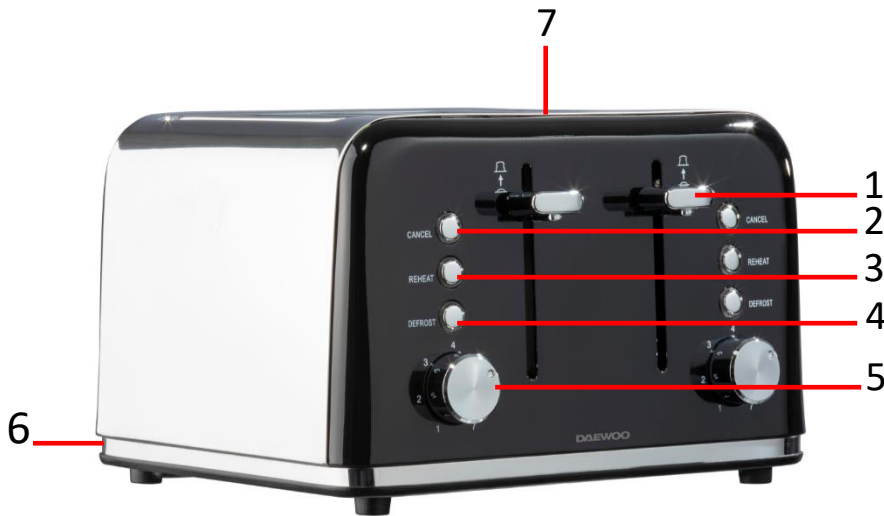


This symbol indicates that the supply uses an alternating current mains supply.



This symbol indicates that the surface is gets hot and care must be taken.

Description of Parts



1. Bread Carriage Lever
2. Cancel Button
3. Re-Heat Button
4. Defrost Button
5. Browning Control
6. Crumb Tray (rear)
7. Bread Slots

Before the first time you use your Toaster

Remove all packing materials and discard responsibly.

Operating Instructions

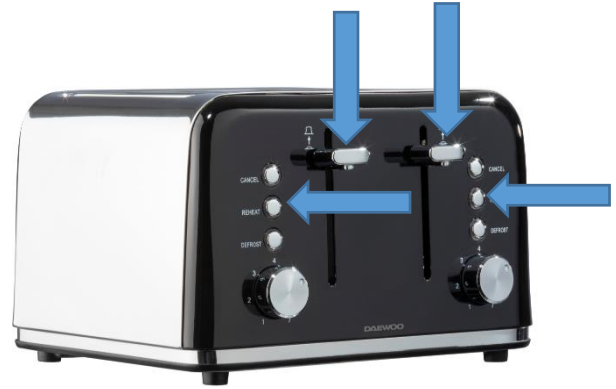
Toasting

- Place the toaster on a solid, level non-flammable surface.
 - Insert the mains plug (with dry hands) into the mains socket and switch on (if applicable).
 - Place the slices of bread into the **Bread Slots** (7).
 - Select the desired browning level using the **Browning Control** (5). Rotate the control clockwise to increase browning and anticlockwise to decrease browning.
 - Push the **Bread Carriage Lever** (1) down to begin toasting, the lever will lock down and then pop up once the toasting is complete.
 - If you wish to cancel the toasting at any time, simply press the **Cancel Button** (2).
- i DO NOT** insert bread slices that are too thick for the Bread Slots, always ensure that the Carriage Lever is free to move up and down.
- i DO NOT** operate the Toaster with the **Crumb Tray** (6) removed.



Reheat Feature

- This feature is used for reheating toast that has previously been made but has gone cold.
- Place the slices of toast into the **Bread Slots (7)**, push the **Bread Carriage Lever (1)** down then immediately press the **Reheat Button (3)** – arrowed right). The **Bread Carriage Lever (1)** will pop up once the reheat cycle has completed.
- If you wish to cancel the reheating mode at any time, simply press the **Cancel Button (2)**.



Defrost Feature

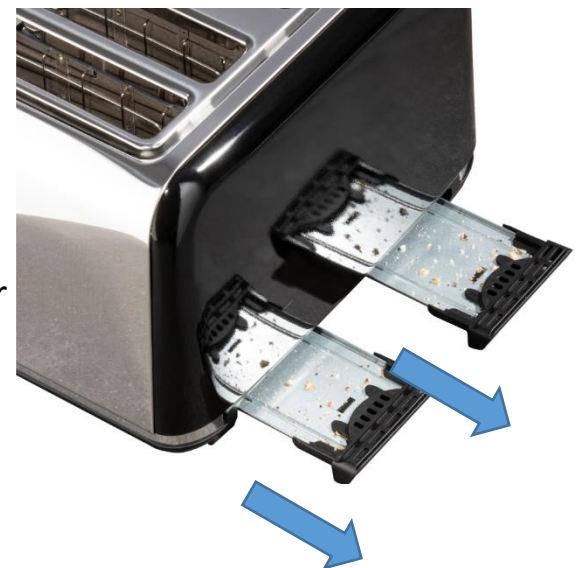
- This feature is used for toasting bread from frozen.
- Place the slices of frozen bread into the **Bread Slots (7)**.
- Select the desired browning level using the **Browning Control (5)**. Slide the control right to increase browning and left to decrease browning.
- Push the **Bread Carriage Lever (1)** down then immediately press the **Defrost Button (4)**. The **Bread Carriage Lever (1)** will pop up once the defrost and toasting cycle has completed.
- If you wish to cancel the defrosting mode at any time, simply press the **Cancel Button (2)**.



i DO NOT insert bread slices that are too thick for the Bread Slots, always ensure that the **Bread Carriage Lever (1)** is free to move up and down.

Care and Use of your Toaster

- Always disconnect the toaster from the mains power supply and allow to cool before cleaning.
- After each use remove the **Crumb Tray (6)** from the toaster and empty out any crumbs.
- Clean outside of the toaster with a clean damp cloth. Never clean with harsh or abrasive cleaners.
- Do not submerge any part of the toaster in water or any other liquids.
- Do not use metal implements (i.e., Knife, fork, etc.) to remove trapped debris.



Troubleshooting Guide

<i>Problem</i>	<i>Possible Cause</i>	<i>Possible Fix</i>
<i>Toast is too pale and underdone</i>	The Browning Control (5) is on a too lower setting.	Rotate the Browning Control (5) clockwise to a higher browning number.
	The Cancel Button (2) has been pressed.	Leave the Toaster to complete its toasting cycle and the carriage to pop up.
	The Reheat button (3) has been pressed and therefore the toasting time is shortened.	Ensure the Reheat Button (3) is not pressed.
	Bread is frozen	Press the Defrost button (4) after pushing the Bread Carriage (1) down.
<i>Toast is dark and overcooked.</i>	The Browning Control (5) is on a too higher setting.	Rotate the Browning Control (5) anticlockwise to a lower browning number.
	The Defrost button (4) has been pressed and therefore the toasting time is too long.	Ensure the Defrost Button (4) is not pressed.

Non-Rewireable Mains Plug

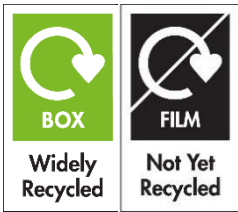
If your appliance is supplied with a non-rewireable plug fitted to the mains lead and should the fuse need replacing, you must use an ASTA approved one (conforming to BS 1362 of the same rating). Never use a plug with the fuse cover missing. If in doubt, consult a qualified electrician.

If you need to remove the plug – **DISCONNECT FROM THE MAINS** – and then cut it off the mains lead and immediately dispose of it safely. Never attempt to reuse the plug or insert it into a socket outlet as there is a danger of electric shock.

Technical Data

Model Number	SDA1586
Rated Voltage	220-240V~ 50-60Hz
Rated Power	1550-1850W
Protection Class	I (This appliance must be earthed)

Disposal of the packaging

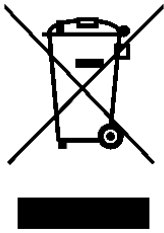


Dispose of paper and cardboard in appropriate paper re-cycling facilities.

Dispose of recyclable plastics in appropriate plastic re-cycling facilities.

Dispose of non-recyclable plastics in the appropriate plastics collection service.

Disposal of the product

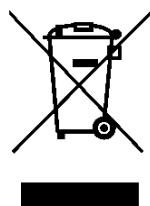


You should now recycle your waste electrical goods and in doing so help the environment. This symbol means waste electrical products at the end of their useful life should not be disposed of with normal household waste and not sent to landfill. Please ensure it is taken to a suitable facility for disposal. Check with your Local Authority or retailer for recycling advice or visit www.recycle-more.co.uk, enter your postcode to find out your nearest recycling site.

Customer Support

Should you require any product information, replacement parts or accessories, please contact our customer care team at help@daewooelectricals.com or call 0161 831 7879.

- *Replacement parts and accessories are guaranteed for 1 year from the date of purchase.*
- *It is important to note that your warranty becomes invalid should non Daewoo parts or accessories be used with this appliance*





DAEWOO®

WARRANTY

Thank you for purchasing your Daewoo product.

As part of our commitment to quality, we are offering you an extra 2 years warranty in addition to your 1 year guarantee

Your Daewoo product is guaranteed for 1 year from the date of original purchase, with proof of purchase or receipt. If any defect should occur due to faulty workmanship or material, your faulty product should be returned to the place of purchase, replacement or refund is at the discretion of the retailer.

The guarantee is subject to the following provisions:

- The product must be correctly installed and operated in accordance with the requirements contained in the instruction manual.
- The product must be used solely for domestic purposes.
- It does not cover general wear and tear, damage, misuse or any consumable parts.
- The guarantee will be rendered invalid if the product is re-sold or has been damaged through inexpert repair.
- The guarantee is only valid within the UK and Eire.

Your standard 1 year guarantee will only be extended to the maximum available for your individual product upon registration. (Note: products must be registered individually and covers the main body and housing). If you do not register your product within 28 days of the original purchase date, your product will only be guaranteed for 1 year.

To validate your extended 2 year warranty* please register your purchase online within 28 days of the original purchase date by registering at <https://help.daewooelectricals.com> or [Contact Us \(daewooelectricals.com\)](https://www.daewooelectricals.com)

*Your extended warranty is only valid with proof of purchase receipt and subject to the conditions outlined above.

Daewoo is a registered trademark.
Produced and imported under licence by
Eurosonic Group Limited
Brightgate House
1 Brightgate Way
Manchester M32 0TB UK
EU Rep: EuroSonic Magppie (ESM) Ltd. Ireland D05 X006
www.esgltd.com