



36" SLIMLINE TOWER FAN

USER MANUAL



*Please refer to the warranty section for terms of your extended guarantee

READING AND STORING THE USER MANUAL



Before using this product, please read through this manual carefully paying particular attention to the safety instructions. Failure to do so may result in personal injury or damage to the product.

Carefully save this instruction manual for future reference. Ensure the user manual is included when passing the product on to any third parties.

Only use the product as described in this user manual. Any other use is considered improper and may result in damage to property or persons.

The manufacturer or vendor cannot be held liable for damages or injury incurred through improper or incorrect use.

- **Read and familiarise yourself with all operating instructions before using this 36 Inch Tower Fan.**
- This appliance can be used by children aged from 8 years and above and persons with reduced physical sensory or mental capabilities or lack of experience and knowledge if they have been given supervision or instruction concerning use of the appliance in a safe way and understand the hazards involved. Children shall not play with the appliance. Cleaning and user maintenance shall not be made by children without supervision.
- Close supervision is required when using this appliance near children.
- Never leave this appliance within reach of children
- Children of less than 3 years should be kept away unless continuously supervised.
- **DO NOT** immerse the appliance or its cord in water or any other liquids.
- Always use this appliance on solid, level, surface.
- **DO NOT** use this appliance outdoors.
- Repairs to electrical appliances should be performed by a qualified electrician. Improper repairs may place user at serious risk

- **DO NOT** operate this appliance with a damaged plug or cord, after a malfunction or after being dropped or damaged in any way.
- Regular, periodic checks should be carried out on the mains cable to ensure no damage is evident. Should there be any signs of damage the appliance should not be used.
- If the power cable is damaged, it should only be replaced by the manufacturer or a suitable qualified after-sales-service in order to avoid a hazard.
- **DO NOT** allow the mains cable to hang over sharp edges or come in contact with hot surfaces.
- **DO NOT** run the mains cable under carpets, rugs, etc.
- This appliance is intended for household use only and should not be used for industrial purposes.
- **DO NOT** use any accessories or attachments with this appliance other than those supplied or recommended by the supplier.
- **DO NOT** use this appliance for anything other than its intended use.
- **DO NOT** push objects (including fingers) into the fan grill or any openings as this could risk injury, damage to the appliance and/or electric shock.
- Unplug after each use. Grasp the plug, not the cord.

Explanation of Symbols

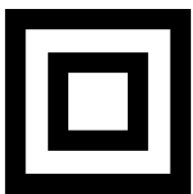
The following warning symbols or words are used in this instruction manual:

**UK
CA**

Products labelled with UK Conformity Assessment identifies products conforming to UK statutory requirements.

CE

Products labelled with this symbol conform to applicable provisions of the European Economic Area.



This Class 2 symbol indicates that the product is electrically double insulated and does not require an earth connection.



You should now recycle your waste electrical goods and in doing so help the environment. This symbol means waste electrical products at the end of their useful life should not be disposed of with normal household waste and not sent to landfill. Please ensure it is taken to a suitable facility for disposal. Check with your Local Authority or retailer for recycling advice or visit www.recycle-more.co.uk enter your postcode to find out your nearest recycling site.

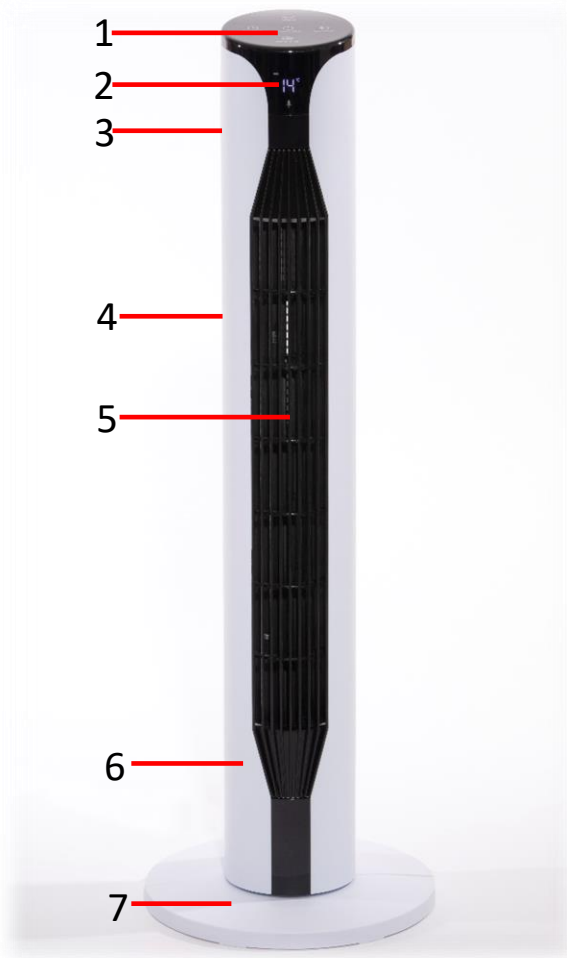


This symbol provides useful additional information on the use of this product.



This symbol means batteries and rechargeable batteries may not be disposed of with household waste!
As the end user you are required by law to bring all batteries and rechargeable batteries to a collection point run by the Local Authority or to a retailer or visit www.recycle-more.co.uk, so that they can be disposed of in an environmentally friendly manner.

Description of Parts



- 1. Control Panel
- 2. Display
- 3. Handle/Remote Storage (Rear)
- 4. Air Intake (Rear)
- 5. Air Outlet
- 6. Body
- 7. Stand

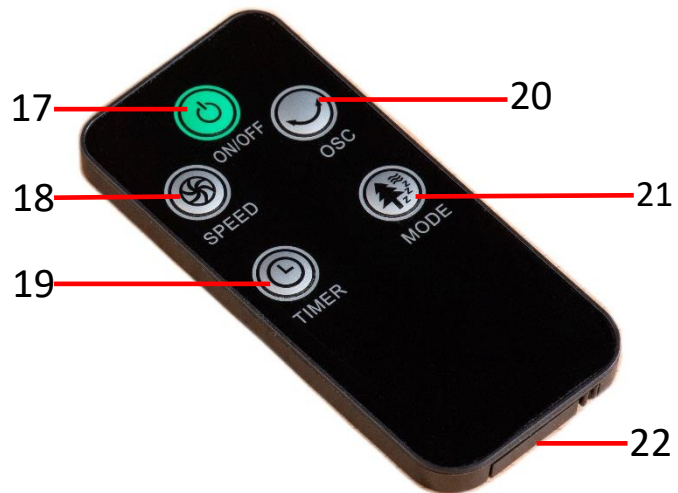
Description of Parts – Display & Control Panel



- 8. Oscillation Button
- 9. Mode button
- 10. On/Off Button
- 11. Fan Speed Button
- 12. Fan Speed Display
- 13. Temperature/Timer Display
- 14. Mode Display
- 15. Remote Control Receiver
- 16. Timer Button

Description of Parts- Remote Control

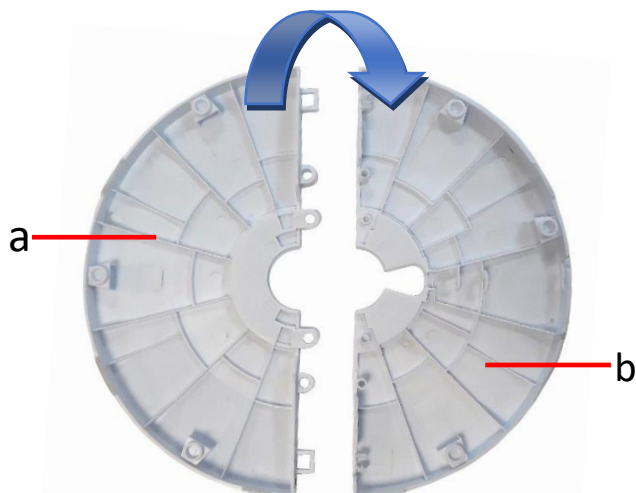
- 17. Power On/Off Button
- 18. Fan Speed Button
- 19. Timer Button
- 20. Oscillate Button
- 21. Mode Button
- 22. Battery Compartment



Assembling Your 36 Inch Tower Fan

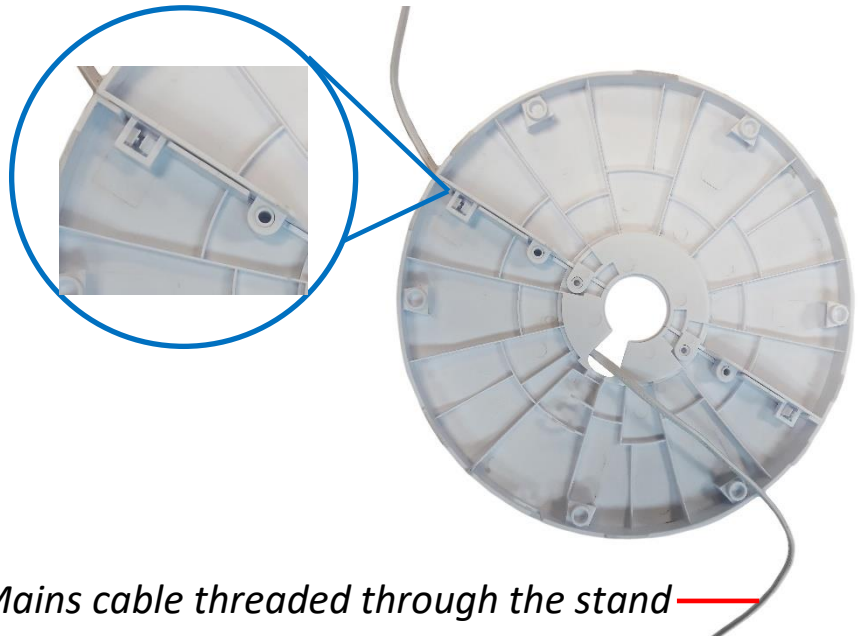
The stand of the tower fan comes in two parts, which fit around the base of the fan with the power cord exiting through the hole in the centre of the stand. Before assembly, place a cloth or similar underneath it to prevent damage to the outer casing.

1. Remove the large stand retaining nut from the base of the fan by unscrewing anti-clockwise as shown right:

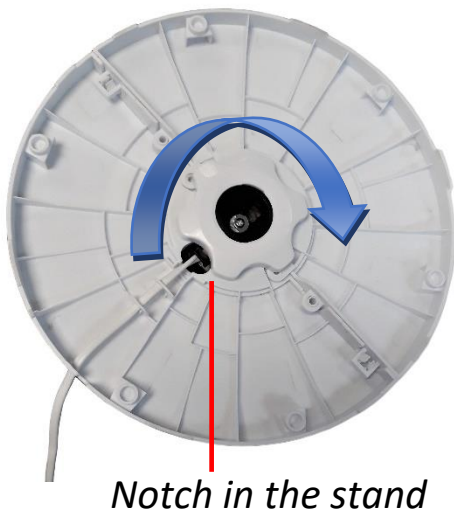


2. Left: Ensure that the mains cable is threaded through the centre of the stand then lay the left hand section (a) of the stand on top of the right hand section (b) and clip the two halves together until the stand is complete as below:

Ensure the two locking clips have fully latched as in the close up right:



Mains cable threaded through the stand —



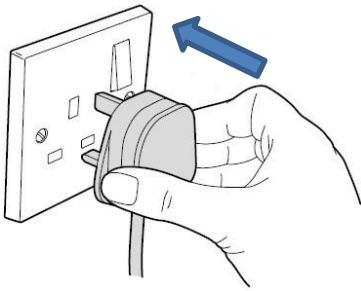
Notch in the stand

3. Place the **Stand (7)** onto the base of the Tower Fan and rotate the stand until it drops into position and the cord grip on the fan base aligns with the notch in the stand as shown left.
4. Secure the **Stand (7)** by rotating the large retaining nut clockwise as shown arrowed left:

5. Finally, thread the mains cable through the cord guide on the underside of the **Stand (7)** as below:



Operating Instructions



1. Once you have assembled your Tower Fan as described above, Place the fan into the desired position ensuring that it is level and stable. Insert the mains plug into the nearest socket.
2. The fan will emit a beep sound and the **Temperature/Timer Display (13)** will show the current room temperature to confirm it is in standby.

3. Press the **Power Button (10)** on the **Control Panel (1)** to power up the unit. The unit will emit two beeps to confirm.
(The fan will go into sleep mode i.e. the display(s) will go dim if the unit is left in standby for 1 minute or longer – the unit can be ‘woken up’ by pressing the **Power Button (10)**).



2. The **Fan Speed Display (12)** will show one light showing that the fan it is running at Speed 1.





3. Press the **Fan Speed Button (11)** on the **Control Panel (1)** to select the desired fan speeds (1, 2 or 3). The **Fan Speed Display (12)** will show the appropriate number of lights for the fan speed chosen.



Selecting the Fan Mode

1. Press the **Mode Button (9)** on the **Control Panel (1)** to select one of the three following fan modes:



Fan Mode	Mode Description	Mode Display (14) will show:
<u>Normal</u>	Normal fan with constant running according to the fan speed selected.	Blank – this shows the fan is running normally with no mode selected.
<u>Natural</u>	Forest wind imitation mode, the airflow randomly changes from a gentle breeze to gusts of wind.	A Tree symbol (right) will be shown to show the fan is in Natural Mode. 
<u>Sleep</u>	The airflow changes in cycles also the Display (2) will extinguish after 30 seconds	Two 'Z's will be shown (right) to show the fan is in Sleep Mode. 

i The **Temperature/Timer Display** (13), the **Fan Speed Display** (12) and the **Mode Display** (14) will automatically dim after 30 seconds on both *Normal* and *Natural* modes, this is normal operation and the unit is not faulty.

i The **Temperature/Timer Display** (13), the **Fan Speed Display** (12) and the **Mode Display** (14) will automatically go out after 30 seconds on *Sleep* mode, this is normal operation and the unit is not faulty.

Oscillation Mode

1. Press the **Oscillate Button** (8) on the **Control Panel** (1) to enable the fan to oscillate from side to side to blow air over a larger area. Press the oscillate button again to stop the oscillation.



i Oscillate Symbol will illuminate on the **Mode Display** (14) when the oscillate mode is selected.

Using the Timer

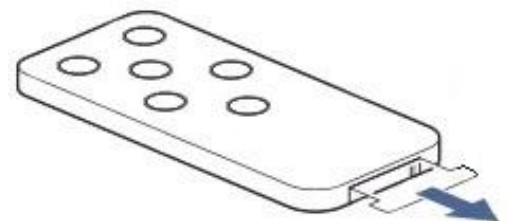
1. Press the **Timer Button** (16) once on the **Control Panel** (1).
2. The **Temperature/Timer Display** (13) will show '01H'. Each further press of the **Timer Button** (16) will advance the 'on' time in 1 hour steps to a maximum time of 12 hours. The fan will now run for the length of time shown on the **Temperature/Timer Display** (13) and then switch off.



Operating Instructions - Using the Remote Control

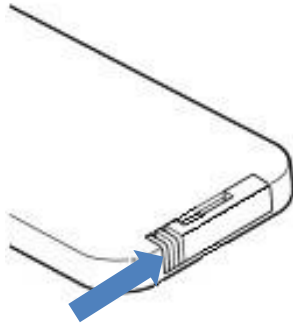
The Remote Control duplicates the controls on the **Control Panel** (1) allowing you to control your Tower Fan remotely.

i If using the Remote Control for the first time, pull the tab from the battery compartment as shown right:

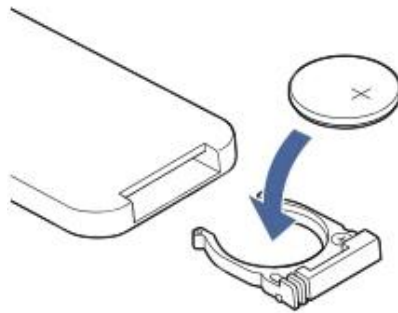


Replacing the Battery in the Remote Control

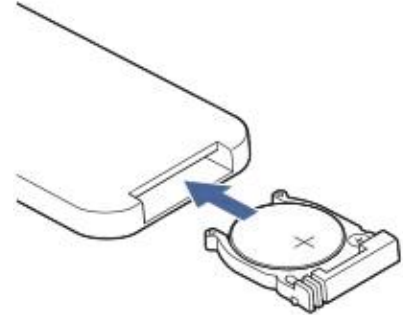
If the Remote-Control range has become reduced or it has stopped working altogether the battery will need replacing as shown below:



A Push the tab on the battery compartment in the direction of the arrow as shown above.



B Slide out the battery compartment and insert a new CR2025 battery ensuring the positive polarity marking is uppermost.



C Slide the battery compartment back into the Remote Control.

- **CAUTION:** There is a danger of explosion if the battery is incorrectly fitted.
- Ensure that the battery is installed with the correct polarity.
- It is recommended that battery is removed if the remote if it is not to be used for a long period of time or if the remote is to be disposed of.
- Replace only with the same or equivalent battery type.
- Store batteries in a cool dry place.
- Do not expose the battery to sunshine, fire, heat or similar, never dispose of batteries in a fire.
- Do not charge non-rechargeable batteries.
- Do not short-circuit batteries.
- Exhausted batteries are to be removed from the product and safely disposed of.

WARNING!

- **Do not ingest the battery, Chemical Burn Hazard.**
- **The remote control supplied with this product contains a coin/button cell battery.**
- **If the coin/button cell battery is swallowed, it can cause severe internal burns in just 2 hours and can lead to death.**
- **Keep new and used batteries away from children and animals.**
- **If the battery compartment does not close securely, stop using the product and keep it away from children.**
- **If you think batteries might have been swallowed or placed inside any part of the body, seek immediate medical attention.**
- **If the batteries leak, remove them immediately to avoid damaging the product. Do not remove the batteries with your bare hands or allow the battery fluid to come into contact with your skin, eyes or mucous membranes. Wear normal household gloves to do so. If, however, your skin has come into contact with the battery fluid, wash your skin immediately, if necessary, seek medical attention.**

Remote Control Storage

The Remote Control can be stored in the **Handle/Remote Storage (3)** slot at the rear of the fan as shown right:



Care and Use of your Tower Fan

- Ensure that the fan is not connected to the mains supply before cleaning.
- Wipe the fan body clean with a clean, soft damp cloth.
- Do not immerse the fan or its cord in water or any other liquid.

Technical Data

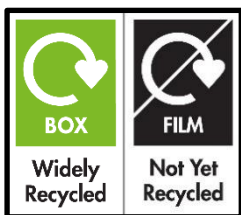
Model No.	COL1571
Voltage	220-240V AC 50/60Hz
Rated Power	55W
Protection Class	II

Non-Rewireable Mains Plug

If your appliance is supplied with a non-rewireable plug fitted to the mains lead and should the fuse need replacing, you must use an ASTA approved one (conforming to BS 1362 of the same rating). Never use a mains plug with the fuse cover missing. If in doubt, consult a qualified electrician.

If you need to remove the plug – DISCONNECT FROM THE MAINS – and then cut it off the mains lead and immediately dispose of it safely. Never attempt to reuse the plug or insert it into a socket outlet as there is a danger of electric shock.

Disposal of the Packaging

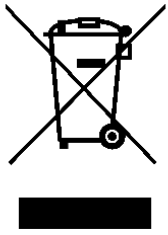


Dispose of paper and cardboard in appropriate paper re-cycling facilities.

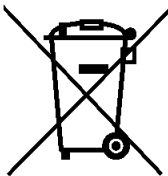
Dispose of recyclable plastics in appropriate plastic re-cycling facilities.

Dispose of non-recyclable plastics in the appropriate plastics collection service.

Disposal of the Product



You should now recycle your waste electrical goods and in doing so help the environment. This symbol means waste electrical products at the end of their useful life should not be disposed of with normal household waste and not sent to landfill. Please ensure it is taken to a suitable facility for disposal. Check with your Local Authority or retailer for recycling advice or visit www.recycle-more.co.uk enter your postcode to find out your nearest recycling site.



This symbol means batteries and rechargeable batteries may not be disposed of with household waste! As the end user you are required by law to bring all batteries and rechargeable batteries to a collection point run by the Local Authority or to a retailer or visit www.recycle-more.co.uk, so that they can be disposed of in an environmentally friendly manner.

Customer Support

Should you require any product information, replacement parts or accessories, please contact our customer care team at help@daewooelectricals.com or call 0161 831 7879.

- *Replacement parts and accessories are guaranteed for 1 year from the date of purchase.*
- *It is important to note that your warranty becomes invalid should non Daewoo parts or accessories be used with this appliance*





DAEWOO®

WARRANTY

Thank you for purchasing your Daewoo product.

As part of our commitment to quality, we are offering you an extra 2 years warranty in addition to your 1 year guarantee

Your Daewoo product is guaranteed for 1 year from the date of original purchase, with proof of purchase or receipt. If any defect should occur due to faulty workmanship or material, your faulty product should be returned to the place of purchase, replacement or refund is at the discretion of the retailer.

The guarantee is subject to the following provisions:

- The product must be correctly installed and operated in accordance with the requirements contained in the instruction manual.
- The product must be used solely for domestic purposes.
- It does not cover general wear and tear, damage, misuse or any consumable parts.
- The guarantee will be rendered invalid if the product is re-sold or has been damaged through inexpert repair.
- The guarantee is only valid within the UK and Eire.

Your standard 1 year guarantee will only be extended to the maximum available for your individual product upon registration. (Note: products must be registered individually and covers the main body and housing). If you do not register your product within 28 days of the original purchase date, your product will only be guaranteed for 1 year.

To validate your extended 2 year warranty* please register your purchase online within 28 days of the original purchase date by registering at:

<https://help.daewooelectricals.com>

or

[Contact Us \(daewooelectricals.com\)](https://www.daewooelectricals.com)

****Your extended warranty is only valid with proof of purchase receipt and subject to the conditions outlined above.***

Daewoo is a registered trademark.
Produced and imported under licence by
Eurosonic Group Limited
Brightgate House
1 Brightgate Way
Manchester M32 0TB UK
EU Rep: EuroSonic Magppie (ESM) Ltd. Ireland D05 X006
www.esgltd.com