



**WITH
REMOTE CONTROL**



16" WHITE WALL FAN

USER MANUAL



*Please refer to the warranty section for terms of your extended guarantee

READING AND STORING THE USER MANUAL



Before using this product, please read through this manual carefully paying particular attention to the safety instructions. Failure to do so may result in personal injury or damage to the product.

Carefully save this instruction manual for future reference. Ensure the user manual is included when passing the product on to any third parties.

Only use the product as described in this user manual. Any other use is considered improper and may result in damage to property or persons.

The manufacturer or vendor cannot be held liable for damages or injury incurred through improper or incorrect use.

- Read and familiarise yourself with all operating instructions before using this 16" Wall Fan.
- Before plugging your unit into the mains, visually check that the unit is intact and has not suffered any transit damage.
- **DO NOT** use this product with a programmer, timer, separate remote-control system or any other device.
- Check that the voltage indicated on the data plate corresponds with that of the local network before connecting the appliance to the mains power supply.
- This appliance can be used by children aged from 8 years and above and persons with reduced physical sensory or mental capabilities or lack of experience and knowledge if they have been given supervision or instruction concerning use of the appliance in a safe way and understand the hazards involved. Children shall not play with the appliance. Cleaning and user maintenance shall not be made by children without supervision.
- Close supervision is required when using this appliance near children.
- Never leave this appliance within reach of children
- Children of less than 3 years should be kept away unless continuously supervised.

-
- **DO NOT** immerse the appliance or its cord in water or any other liquids.
 - **DO NOT** leave the appliance unattended during use.
 - **DO NOT** leave the appliance unattended whilst connected to the mains supply
 - Always use this appliance on solid, level, surface.
 - **DO NOT** use this appliance outdoors.
 - It is imperative to unplug the power cord after the appliance has been used, before it is cleaned and whilst being repaired.
 - Repairs to electrical appliances should be performed by a qualified electrician. Improper repairs may place user at serious risk.
 - **DO NOT** operate this appliance with a damaged plug or cord, after a malfunction or after being dropped or damaged in any way.
 - Regular, periodic checks should be carried out on the mains cable to ensure no damage is evident. Should there be any signs of damage the appliance should not be used.
 - If the power cable is damaged, it should only be replaced by the manufacturer or a suitable qualified-after-sales service in order to avoid a hazard.
 - **DO NOT** allow the mains cable to hang over sharp edges or come in contact with hot surfaces.
 - **DO NOT** run the mains cable under carpets, rugs, etc.
 - This appliance is intended for household use only and should not be used for industrial purposes.
 - **DO NOT** use any accessories or attachments with this appliances other than those supplied or recommended by the supplier.
 - **DO NOT** use this appliance for anything other than intended use.
 - **DO NOT** push objects (including fingers) into the fan grill or any openings as this could risk injury or damage to the appliance.

- Unplug after each use. Grasp the plug not the cord.

Explanation of Symbols

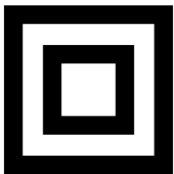
The following warning symbols or words are used in this instruction manual:

**UK
CA**

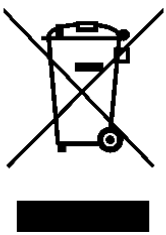
Products labelled with UK Conformity Assessment identifies products conforming to UK statutory requirements.

CE

Products labelled with this symbol conform to applicable provisions of the European Economic Area.



This Class 2 symbol indicates that the product is electrically double insulated and does not require an earth connection.



You should now recycle your waste electrical goods and in doing so help the environment. This symbol means waste electrical products at the end of their useful life should not be disposed of with normal household waste and not sent to landfill. Please ensure it is taken to a suitable facility for disposal. Check with your Local Authority or retailer for recycling advice or visit www.recycle-more.co.uk enter your postcode to find out your nearest recycling site.



Waste batteries should not be disposed of with household waste. Please recycle where facilities exist. Check with your Local Authority or retailer for recycling advice or visit www.recycle-more.co.uk enter your postcode to find out your nearest recycling site.



This symbol provides useful additional information on the use of this product.

Before first use of Your 16 Inch Wall Fan

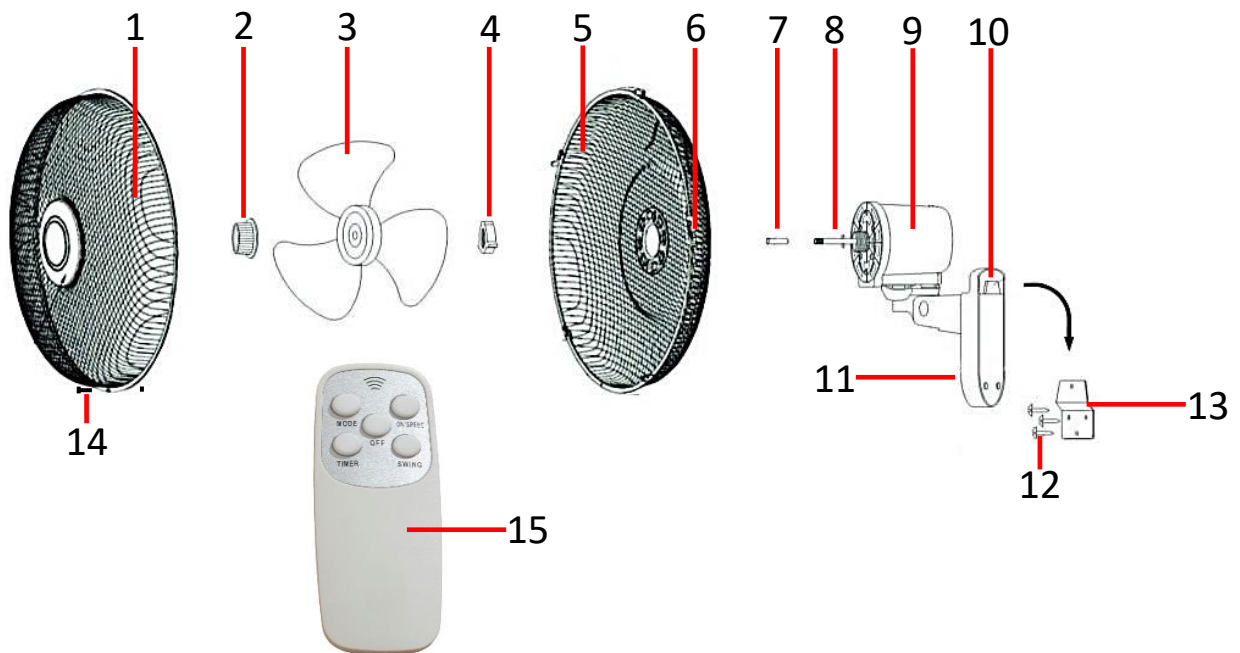
Remove all packing materials and discard responsibly.

Ensure all parts are present – see **Description of Parts** below.

Check that there is no damage to the mains cable or product.

Description of Parts

- | | |
|--------------------------|-----------------------|
| 1. Front Guard | 9. Motor Housing |
| 2. Blade Retaining Nut | 10. Fan Wall Mount |
| 3. Fan Blade | 11. Control Panel |
| 4. Rear Guard Fixing Nut | 12. Fixing Screws |
| 5. Rear Guard | 13. Wall Bracket |
| 6. Guard Clips | 14. Guard Screw & Nut |
| 7. Protective Sleeving | 15. Remote Control |
| 8. Motor Spindle | |



Positioning of Your 16 Inch Wall Fan

The Wall Fan should be mounted on a solid wall at a height that puts it out of reach of young children and pets.

It should be mounted on brick or concrete walls using the wall plug fixings supplied or on a wooden wall using the screws supplied.

If the fan is to be mounted on a plasterboard stud wall it must be fixed to the wooden studs behind the plaster board and not to the board as the movement of the fan may cause the fixings to fail.

When siting the Wall Fan care should be taken to avoid curtains and other loose furnishings that may become entangled in the mechanism.

Fitting the Wall Bracket

Fit the **Wall Bracket** (8) to the wall using supplied Wall Plugs and Screws (or alternative appropriate fixings for the wall) as follows:

⚠ WARNING! *Be careful whilst drilling the holes, care must be taken not to damage concealed cables and pipes in the wall. If in doubt obtain the services of a qualified tradesman to fit the wall bracket.*

Assembling Your 16 Inch Wall Fan



1. Remove the **Rear Guard Fixing Nut (4)** from the **Motor Housing (9)** by unscrewing anticlockwise (arrowed left).

2. Place the **Rear Guard (5)** over the three pins on the front of the **Motor Housing (9)** and replace the **Rear Guard Fixing Nut (4)** by screwing it back on clockwise as arrowed right.

i Ensure that the guard is fitted such that the Carry Handle is at the top.



3. Remove the **Protective Sleeving (7)** from the **Motor Spindle (8)**.
4. Take the **Fan Blade (3)** and slide it onto the **Motor Spindle (8)** ensuring that notches on the rear of the fan blade line up with the splines on the spindle – arrowed left.

i **Rear Guard (5)** removed for clarity.

5. Secure the **Fan Blade (3)** to the **Motor Spindle (8)** by screwing on the **Blade Retaining Nut (2)** in an anticlockwise direction as shown right.

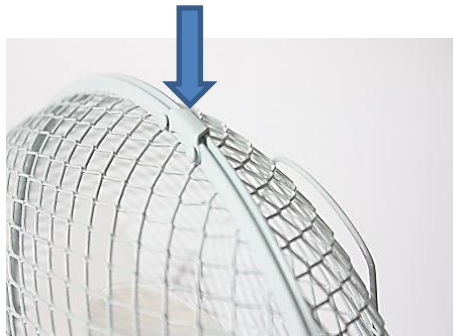
i The **Blade Retaining Nut (2)** is reverse threaded.





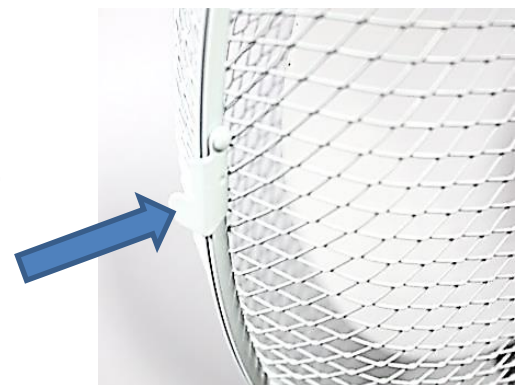
6. Remove the small **Guard Screw & Nut** (14) from the **Front Guard** (1) using a suitable screwdriver (not supplied).

7. Move the **Guard Clips** (6) around the outside edge of the **Front Guard** (1) outwards.



8. Hang the **Front Guard** (1) over the top of the **Rear Guard** (5).

9. Bring the **Front Guard** (1) down to meet the **Rear Guard** (5) and push the **Guard Clips** (6) inwards until the **Front Guard** (1) is fastened to the **Rear Guard** (5).



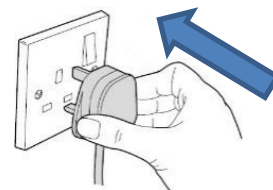
10. Finally, fit the small **Guard Screw & Nut** (14) through the holes in the bottom edge of both the guards and tighten with a suitable screwdriver (not supplied).

i This **Guard Screw & Nut** (14) must be fitted so that the guards cannot be removed accidentally.

Operating Your Wall Fan

Once the Wall Fan has been correctly positioned and mounted on its **Wall Bracket** (13) as described above, operate the fan as follows:

1. Plug the fan into a suitable wall socket, taking care to keep the power cable away from moving parts.
2. The fan can be tilted forwards and backwards to the desired angle of airflow, this should not be carried out while the fan is running to avoid injury.
3. To operate the fan, press the 'ON/SPEED' button on the **Control Panel** (11), repeated pressing of the button will select from Low (L), Medium (M) or High (H) fan speeds which will be shown by the indicator lights.
4. The fan can be made to oscillate from side to side by pressing the 'SWING' button on the **Control Panel** (11), press the button again to cancel oscillating.



Using the Remote Control (15)

Fitting the Batteries

- Slide open the cover on the Battery Compartment in the direction of the arrow on the **Remote Control** (19).
- Insert 2x AAA 1.5V Batteries (not supplied) into the Battery Compartment being careful to observe the polarity markings

Battery Warnings

- Do not mix old and new batteries together.
- It is recommended that batteries are removed from the remote control if it is not to be used for a long period of time.
- CAUTION: There is a danger of explosion if the batteries are incorrectly fitted.
- Replace only with the same or equivalent battery type.
- Do not expose the batteries to sunshine, fire, heat or similar.
- Do not dispose of batteries in a fire.

WARNING

- Do not ingest the batteries.
- Keep new and used batteries away from children and animals.
- If the battery compartment does not latch securely, stop using the product and keep it away from children.
- If you think batteries might have been swallowed or placed inside any part of the body, seek immediate medical attention.
- If the batteries leak, remove them immediately to avoid damaging the product. Do not remove the batteries with your bare hands or allow the battery fluid to come into contact with your skin, eyes or mucous membranes. Wear normal household gloves to do so. If, however, your skin has come into contact with the battery fluid, wash your skin immediately, if necessary, seek medical attention.

The Remote Control (15) duplicates the buttons on the **Control Panel** (11) allowing full remote control of your wall fan.

The Remote Control also has two more features not found on the **Control Panel** (11) – Fan Mode and Fan Timer as described below:



1. Selecting the Fan Mode

Press the Mode Button on the **Remote Control** (15) to enter **Normal**, **Nature**, or **Sleep** modes as described below:

Normal – The fan will run continuously at the fan speed set by the **On/Speed** Button and the Normal (NOR) Indicator will illuminate on the **Control Panel** (11).

Nature – in Nature mode, the Nature Mode Indicator (NAT) will illuminate on the **Control Panel** (11). In this mode the fan will automatically run at varying speeds simulating natural wind, the strength of the wind depends on which speed high, medium or low, has been selected by the **On/Speed** Button.

Sleep – in Sleep mode, the Sleep Mode Indicator (SLP) will illuminate. In this mode the fan will automatically run at varying speeds from off to high, medium or low speed, depending on which speed has been selected by the **On/Speed** Button.

2. Using the Fan Timer

The Timer function allows the fan to stay on for a preset time of up to 7.5 hours before switching off, the Timer is set as follows:

- Switch the Fan on as described in 'Operating Your Wall Fan' above.
- Press the Timer Button on the **Remote Control** (15) to enter the Timer mode, each press of the button will select an on time of up to 7.5 hours in 0.5-hour increments. The on time selected will be shown by the Timer Indicators on the **Control Panel** (15).
- The fan will automatically switch off after the set time has elapsed.

Care and Maintenance

- Ensure that the fan is not connected to the mains supply before cleaning.
- Wipe the fan body clean with a clean, soft damp cloth.
- Do not immerse the fan or its cord in water or any other liquid.

Non-Rewireable Mains Plug

If your appliance is supplied with a non-rewireable plug fitted to the mains lead and should the fuse needed replacing, you must use an ASTA approved one (conforming to BS 1362 of the same rating). Never use a plug with fuse cover missing. If in doubt, consult a qualified electrician.

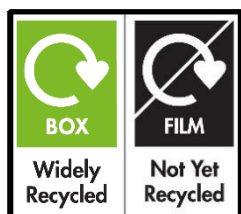
If you need to remove the plug-**DISCONNECT FROM THE MAINS**- and then cut it off the mains lead an immediately dispose of it safely. Never attempt to reuse the plug or insert it into a socket outlet as there is a danger of electric shock.

Technical Data

Model No.	COL1577
Voltage	220-240V AC 50/60Hz
Rated Power	45W
Protection Class	II

Recycling Information

Disposal of the Packaging

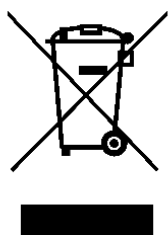


Dispose of paper and cardboard in appropriate paper re-cycling facilities.

Dispose of recyclable plastics in appropriate plastic re-cycling facilities.

Dispose of non-recyclable plastics in the appropriate plastics collection service.

Disposal of the Product



You should now recycle your waste electrical goods and in doing so help the environment. This symbol means waste electrical products at the end of their useful life should not be disposed of with normal household waste and not sent to landfill. Please ensure it is taken to a suitable facility for disposal. Check with your Local Authority or retailer for recycling advice or visit www.recycle-more.co.uk, enter your postcode to find out your nearest recycling site.



Waste batteries should not be disposed of with household waste. Please recycle where facilities exist. Check with your Local Authority or retailer for recycling advice or visit www.recycle-more.co.uk enter your postcode to find out your nearest recycling site.

Customer Support

Should you require any product information, replacement parts or accessories, please contact our customer care team at help@daewooelectricals.com or call 0161 831 7879.

- *Replacement parts and accessories are guaranteed for 1 year from the date of purchase.*
- *It is important to note that your warranty becomes invalid should non Daewoo parts or accessories be used with this appliance*





DAEWOO®

WARRANTY

Thank you for purchasing your Daewoo product.

As part of our commitment to quality, we are offering you an extra 2 years warranty in addition to your 1 year guarantee

Your Daewoo product is guaranteed for 1 year from the date of original purchase, with proof of purchase or receipt. If any defect should occur due to faulty workmanship or material, your faulty product should be returned to the place of purchase, replacement or refund is at the discretion of the retailer.

The guarantee is subject to the following provisions:

- The product must be correctly installed and operated in accordance with the requirements contained in the instruction manual.
- The product must be used solely for domestic purposes.
- It does not cover general wear and tear, damage, misuse or any consumable parts.
- The guarantee will be rendered invalid if the product is re-sold or has been damaged through inexpert repair.
- The guarantee is only valid within the UK and Eire.

Your standard 1 year guarantee will only be extended to the maximum available for your individual product upon registration. (Note: products must be registered individually and covers the main body and housing). If you do not register your product within 28 days of the original purchase date, your product will only be guaranteed for 1 year.

To validate your extended 2 year warranty* please register your purchase online within 28 days of the original purchase date by registering at:

<https://help.daewooelectricals.com>

or

[Contact Us \(daewooelectricals.com\)](https://www.daewooelectricals.com)

****Your extended warranty is only valid with proof of purchase receipt and subject to the conditions outlined above.***

Daewoo is a registered trademark.
Produced and imported under licence by
Eurosonic Group Limited
Brightgate House
1 Brightgate Way
Manchester M32 0TB UK
EU Rep: EuroSonic Magppie (ESM) Ltd. Ireland D05 X006
www.esgltd.com