

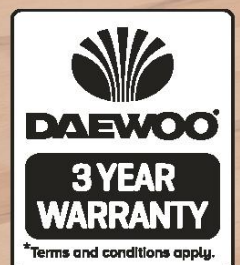


# 4 IN 1 PORTABLE AIR CONDITIONER

Air Conditioning / Heating / Fan Only / Dehumidifier



\*Please refer to the warranty section for terms of your extended guarantee



## READING AND STORING THE USER MANUAL



Before using this product, please read through this manual carefully paying particular attention to the safety instructions. Failure to do so may result in personal injury or damage to the product.

Carefully save this instruction manual for future reference. Ensure the user manual is included when passing the product on to any third parties.

## IMPORTANT SAFETY INSTRUCTIONS FOR PROPER USE

**When using electrical appliances, basic safety precautions should always be followed.**

Only use the product as described in this user manual. Any other use is considered improper and may result in damage to property or persons.

The manufacturer or vendor cannot be held liable for damages or injury incurred through improper or incorrect use.

- **Read and familiarise yourself with all operating instructions before using this Air Conditioner with Heating.**
- Before plugging your unit into the mains, visually check that the unit is intact and has not suffered any transit damage.
- Check that the voltage indicated on the data plate corresponds with that of the local network before connecting the appliance to the mains power supply.
- Disconnect the power plug from the socket before dismantling, assembling or cleaning.
- Avoid touching any moving parts within the appliance.
- **DO NOT** insert fingers, pencils or any other objects through the guard.
- This appliance can be used by children from 8 years and above and persons with reduced physical, sensory or mental capabilities or lack of experience or knowledge if they have been given supervision or instruction concerning use of the appliance in a safe way and understands the hazards involved. Children shall not play with the

appliance. Cleaning and user maintenance shall not be made by children without supervision.

- Children of less than 3 years should be kept away unless continuously supervised.
- Children aged from 3 years and less than 8 years shall only switch on/off the appliance provided that it has been placed or installed in its intended normal operating position and they have been given supervision or instruction concerning use of the appliance in a safe way and understand the hazards involved. Children aged from 3 years and less than 8 years shall not plug in, regulate and clean the appliance or perform user maintenance.
- **DO NOT** leave children unsupervised with this appliance.
- **DO NOT** clean the unit by spraying it or immersing it in water.
- **DO NOT** connect the appliance to an electrical outlet using an extension lead. If an outlet is not available, one should be installed by a qualified electrician.
- **DO NOT** use this air conditioner with an extension cable.
- **DO NOT** operate this appliance if the cord or plug are damaged, after a malfunction or after being dropped or damaged in any way. Ensure the power cord is not stretched or exposed to sharp objects or edges.
- If the supply cord is damaged it must be replaced by the manufacturer or service agent.
- A damaged supply cord should be replaced by qualified personnel in order to avoid a hazard.
- Any service other than regular cleaning or filter replacement should be performed by an authorised service representative.
- **DO NOT** use this appliance for any other purpose than its intended use.
- **The air conditioner must always be stored and transported upright, otherwise irreparable damage may be caused to the compressor; if in doubt, wait at least 24**

---

**hours before restarting the unit.**

- Avoid restarting the air conditioner unless 3 minutes have passed since being turned off. This prevents damage to the compressor.
- **DO NOT** use the mains plug or external timer as a means of switching the air conditioner on or off. Use the ON/OFF button located on the control panel.
- **DO NOT** use this air conditioner with a programmer, timer, separate remote-control system or any other device that switches the air conditioner on automatically, since a fire risk exists if the air conditioner is covered or positioned incorrectly.
- Always place the unit on a dry and stable surface.
- The appliance should not be placed in a laundry or wet room.
- The appliance must be placed in a room without sources of ignition (for example: open flames, an operating gas appliance or an operating electric heater)
- The appliance must be installed and used in a room with a floor area larger than 15m<sup>2</sup>
- This appliance contains R290 refrigerant gas. For quantity see the rating label on the rear of the unit.
- R290 refrigerant gas complies with EU environmental directives.
- Refrigerant gas may be odourless, if the appliance is used or stored in an unventilated room, the room must be such as to prevent stagnation of possible leaks of refrigerant gas as there could be a danger of fire or explosion hazard should the refrigerant come into contact with electric heaters, stoves or other sources of ignition.
- The refrigerant system should not be perforated.
- The appliance must be stored in such a way as to prevent mechanical failure.
- Individuals who operate or work on the refrigerant circuit must have the appropriate certification issued by an

accredited organisation that ensures competence in handling refrigerants according to a specific evaluation recognized by associations in the industry.

- Repairs must be performed based on the recommendation from the manufacturing company. Maintenance and repairs that require the assistance of other qualified persons must be performed under the supervision of an individual specified in the use of flammable refrigerants.



- The air conditioner will defrost on occasions, do not use any tools or heaters to speed up this process as this may cause damage to the appliance.

**⚠ WARNING!** In order to avoid overheating, **DO NOT cover the air conditioner.**

- Ensure appliance is situated in an open area, **DO NOT** allow it to come in contact with Cupboards, Curtains, wall coverings, clothing or other flammable materials.
- **DO NOT** install the appliance directly below an electrical socket.
- Close supervision is required when using this appliance near children.
- **DO NOT** leave this appliance within reach of children.

**⚠ WARNING!** Some parts of this product can become very hot and cause burns. Particular attention has to be given where children and vulnerable people are present.

- **DO NOT** use the air conditioner in the immediate surroundings of a bath, shower or a swimming pool.
- **DO NOT** use this air conditioner in small rooms when they are occupied by persons not capable of leaving the room on their own, unless constant supervision is provided.
- **DO NOT** immerse the appliance or its cord in water or

- any other liquids.
- **DO NOT** leave the appliance unattended during use.
  - **DO NOT** leave the appliance unattended whilst connected to the mains supply.
  - **DO NOT** use this appliance outdoors.
  - It is imperative to unplug the power cord after the appliance has been used, before it is cleaned and whilst being repaired.
  - Repairs to electrical appliances should only be performed by a qualified electrician. Improper repairs may place user at serious risk.
  - Regular, periodic checks should be carried out on the mains cable to ensure no damage is evident. Should there be any signs of damage the appliance should not be used.
  - **DO NOT** allow the mains cable to hang over sharp edges or come in contact with hot surfaces.
  - **DO NOT** run the mains cable under carpets, rugs, etc.
  - Allow the unit to cool before storage.
  - Before cleaning, disconnect the appliance from the mains supply and allow to cool.
  - **DO NOT** place the appliance near to flammable material or high pressure containers. (E.g. Paper, wood, petrol, solvents, spray canisters etc.)
  - This appliance is intended for household use only and should not be used for industrial purposes.
  - **DO NOT** use any accessories or attachments with this appliance other than those supplied or recommended by supplier.
  - **DO NOT** push objects into any openings as damage to the appliance and/or electric shock may occur.
  - The appliance should not be installed in areas which have a fire-risk, such as garages, stables or wooden sheds; this is applicable also for rooms in which highly inflammable gasses or dust can develop. Danger of fire!!
  - Unplug after each use. Grasp the plug, not the cord.

This appliance has been ERP classified as a portable space heater and should only be used for supplementary, secondary or temporary heating. It should not be considered for primary permanent heating in a room or dwelling.

**i** During the first few minutes of initial use, you may notice a slight odour and a little smoke. This is normal and will quickly disappear, it is the coating applied to the heating elements to prevent any corrosion during transit.

### Explanation of Symbols

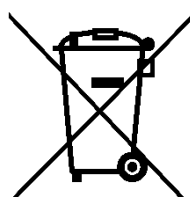
The following warning symbols or words are used in this instruction manual:



Products labelled with UK Conformity Assessment identifies products conforming to UK statutory requirements.

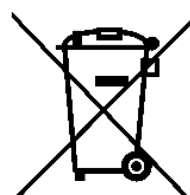


Products labelled with this symbol conform to applicable provisions of the European Economic Area.



This symbol means batteries and rechargeable batteries may not be disposed of with household waste!

As the end user you are required to bring all batteries and rechargeable batteries to a collection point run by the Local Authority or visit [www.recycle-more.co.uk](http://www.recycle-more.co.uk) or to a retailer, so that they can be disposed of in an environmentally friendly manner.



You should now recycle your waste electrical goods and in doing so help the environment. This symbol means waste electrical products at the end of their useful life should not be disposed of with normal household waste and not sent to landfill. Please ensure it is taken to a suitable facility for disposal. Check with your Local Authority or retailer for recycling advice or visit [www.recycle-more.co.uk](http://www.recycle-more.co.uk) enter your postcode to find out your nearest recycling site.



This symbol provides useful additional information on the use of this product.



This symbol indicates that the supply uses an alternating current mains supply.

**Description of Parts – Main Unit**

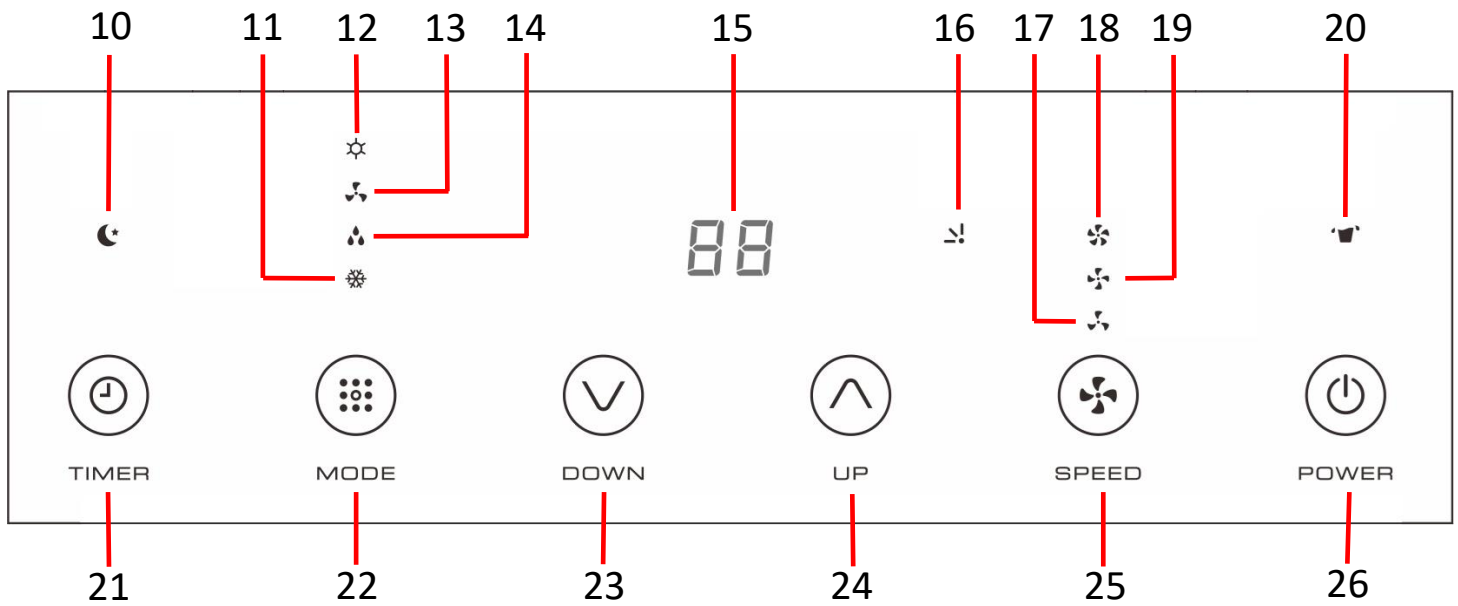


1. Control Panel  
2. Cool Air Louvre  
3. Castors

4. Exhaust  
5. Air Filter Cover  
(removed for clarity)

6. Upper Tank Drain Cover  
7. Air Inlet  
8. Remote Control  
9. Lower Tank Drain Cover

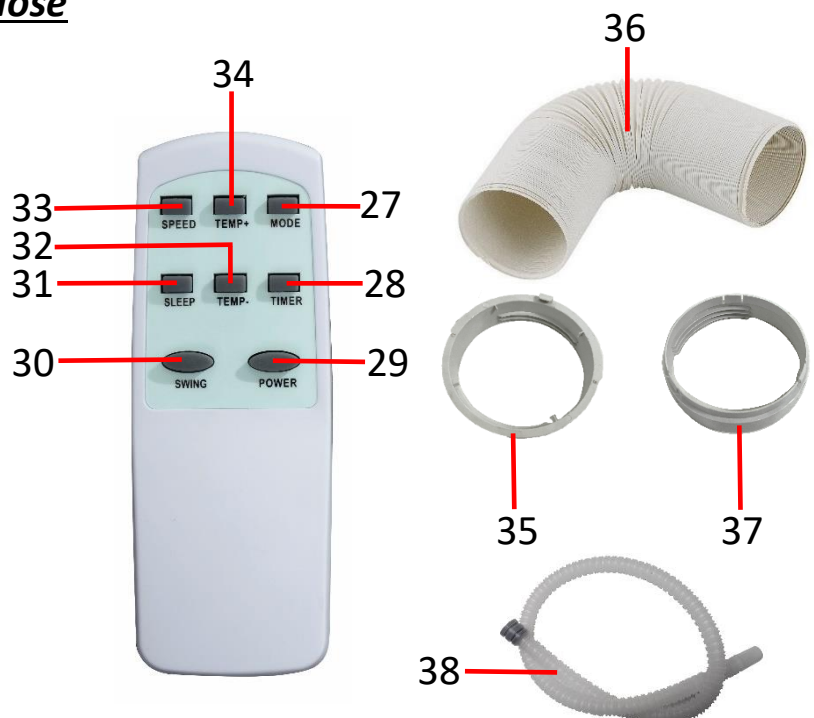
### Description of Parts – Control Panel (1)



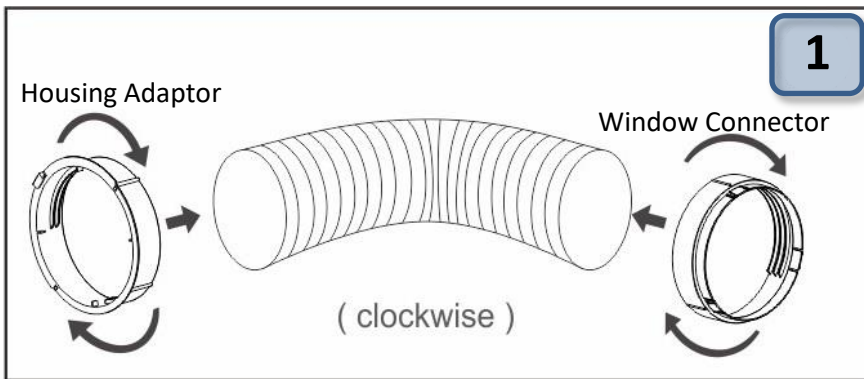
- |                              |                                  |
|------------------------------|----------------------------------|
| 10. Sleep Indicator          | 19. Medium Fan Speed Indicator   |
| 11. Cool Indicator           | 20. Water Full Indicator         |
| 12. Heat Indicator           | 21. Timer Button                 |
| 13. Fan Indicator            | 22. Mode Button                  |
| 14. Dehumidify Indicator     | 23. Temperature/Time Down Button |
| 15. LED Display              | 24. Temperature/Time Up Button   |
| 16. Oscillation Indicator    | 25. Fan Speed Button             |
| 17. Low Fan Speed Indicator  | 26. Power On/Off Button          |
| 18. High Fan Speed Indicator |                                  |

### Description of Parts – Remote and Hose

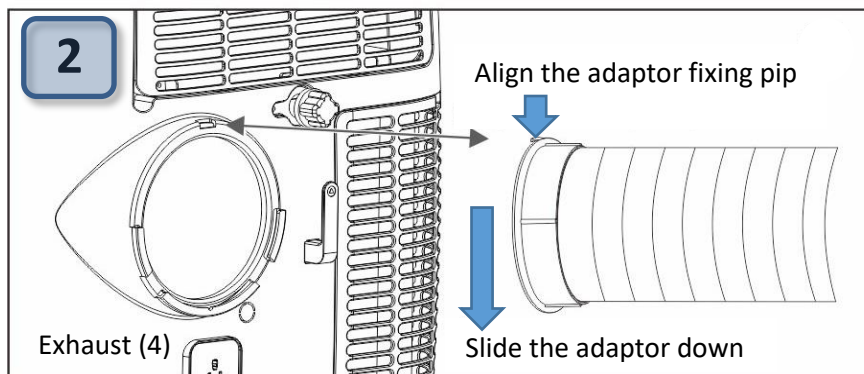
- 27. Mode button
- 28. Timer button
- 29. Power On/Off
- 30. Oscillation (swing) button
- 31. Sleep mode
- 32. Temperature/Time – Down
- 33. Fan Speed control
- 34. Temperature/Time + Up
- 35. Housing Adaptor
- 36. Exhaust hose
- 37. Window Connector
- 38. Drain Hose



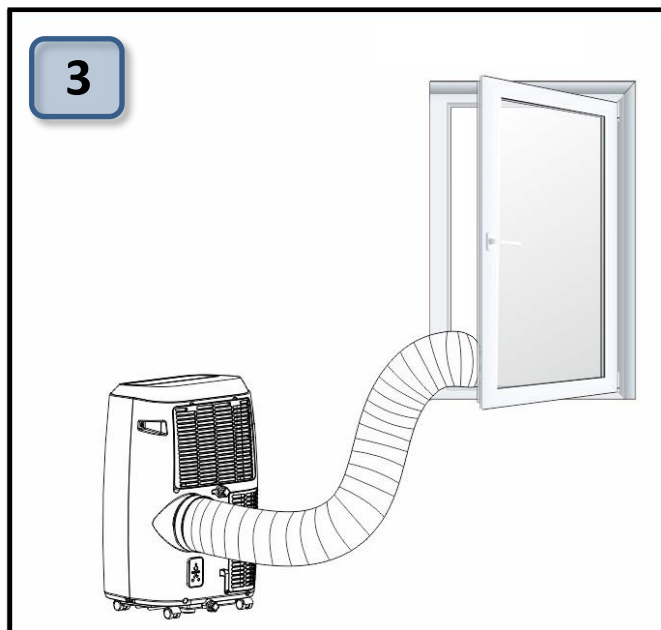
***Fitting the Flexible Exhaust Hose – this must be fitted before use:***



1. Twist the **Housing Adaptor** (35) and the **Window Connector** (37) clockwise onto the ends of the flexible **Exhaust Hose** (36).



2. Align the fixing pip on the **Housing Adaptor** (35) with the notch in the **Exhaust** (4) at back of the air conditioner. Once aligned, slide the **Housing Adaptor** (35) down into place.



3. Place the Window end of the flexible **Exhaust Hose** (36) through a suitable outlet such as an open window, door, etc.

**i** The unit must be positioned a minimum of 1 Metre away from any wall or obstruction on all sides.

- Before use, check the flexible **Exhaust Hose** (36) is properly fitted as above.
- Ensure the unit is on a solid, level, dry surface.
- Ensure the unit is plugged directly into the mains socket and does not share sockets with other appliances via a mains adaptor or an extension lead, etc.

## Using Your Air Conditioning Unit

### Cooling Mode

1. Power the unit up by pressing the **Power ON/OFF Button** (26).
2. Press the **Mode Button** (22) until the **Cool Indicator** (11) illuminates.
3. Press the **Temperature/Time Up** (24) and **Temperature/Time Down** (23) Buttons to select the desired room temperature (16°C - 31°C) on the **LED Display** (15).
4. Press the **Fan Speed Button** (25) to choose either low, medium or high fan speeds, the selected speed will be shown by the **Fan Speed Indicators** (17, 18 & 19).

**i** To create a circulatory effect, the cooled air leaves the unit at an angle and slightly to one side. This is to make space cooling more efficient and is quite normal.

### Dehumidifying Mode

1. Power the unit up by pressing the **Power ON/OFF Button** (26).
2. Press the **Mode Button** (22) until the **Dehumidify Indicator** (14) illuminates.

**i** The unit will automatically set the temperature to 2°C below the room temperature and the fan speed to low and begin dehumidifying.

**i** The amount of water extracted from the atmosphere is approximately 1.2 litres an hour (28 litres a day).

### Fan Only Mode

1. Power the unit up by pressing the **Power ON/OFF Button** (26).
2. Press the **Mode Button** (22) until the **Fan Indicator** (13) illuminates.
3. Press the **Fan Speed Button** (25) to choose either low, medium or high fan speeds, the selected speed will be shown by the **Fan Speed Indicators** (17, 18 & 19).

### Heating Mode

5. Power the unit up by pressing the **Power ON/OFF Button** (26).
6. Press the **Mode Button** (22) until the **Heat Indicator** (12) illuminates.
7. Press the **Temperature/Time Up** (24) and **Temperature/Time Down** (23) Buttons to select the desired room temperature (16°C - 31°C) on the **LED Display** (15).
8. Press the **Fan Speed Button** (25) to choose either low, medium or high fan speeds, the selected speed will be shown by the **Fan Speed Indicators** (17, 18 & 19).

### Using the Timer – Timer ON Setting

1. When the unit is **OFF** i.e., not powered up but plugged into the mains, press the **Timer Button** (21), the Timer button will illuminate to show the unit is in **TIMER** mode.

2. Next select how many hours you need until the unit switches **ON** using the **Temperature/Time Up** (24) and **Temperature/Time Down** (23) buttons.
3. The **ON** time is displayed on the **LED Display** (15) which is the number of hours until the unit switches **ON** up to a maximum of 24Hrs.
4. The **LED Display** (15) will flash whilst the time is being set. Once set, press the **Timer Button** (21) again and the **LED Display** (15) will stop flashing and go dim.
5. The timer will count down until the unit switches **ON** after the set number of hours have elapsed.

**i** To deactivate the timer function, press **Timer Button** (21) until Timer button does not illuminate.

### Using the Timer – Timer OFF Setting

1. When the unit is **ON**, press the **Timer Button** (21), the Timer button will illuminate to show the unit is in **TIMER** mode.
2. Next select how many hours you need until the unit switches OFF using the **Temperature/Time Up** (24) and **Temperature/Time Down** (23) Buttons.
3. The OFF time is displayed on the **LED Display** (15) which is the number of hours until the unit switches **OFF** up to a maximum of 24Hrs.
4. The **LED Display** (15) will flash whilst the time is being set. Once set, press the **Timer Button** (21) again and the **LED Display** (15) will stop flashing and go dim.
5. The timer will count down until the unit switches off after the set number of hours have elapsed.

### Changing °C to °F

Whilst the unit is running, press and hold the **Temperature/Time Up** (24) and **Temperature/Time Down** (23) buttons together until the **LED Display** (15) changes from showing degrees Centigrade to Fahrenheit. Repeat the process to return the display back to Centigrade.

### Inserting the Batteries in the Remote Control (8)

- Slide the battery compartment cover on the rear of the **Remote Control** (8) back, following the direction of the arrow on the battery compartment and carefully remove.
- Insert 2 x 1.5V AAA batteries (not supplied) into the battery compartment observing the polarity markings on the inside.
- Slide the battery cover back on until it clicks back in place.

### Using the Remote Control (8)

The controls on the control panel are duplicated on the remote control to allow full functional use of the Air Conditioner.

The remote control also allows access to two other functions:



### **1. Oscillation (Swing) mode**

- a. Pressing the **Oscillation (swing)** button (30) on the **Remote Control** (8) allows the **Cool Air Louvre** (2) on the top of the unit to move air over a larger area.
- b. Press the **Oscillation (swing)** button (30) again to stop oscillation.

### **2. Sleep**

- a. Whilst in cooling mode, press the **Sleep mode** (31) to set the temperature. It increases 1°C after an hour and at most increases 2°C after 2 hours.
- b. Whilst in heating mode, press the **Sleep mode** (31) to set the temperature. It decreases 1°C after an hour and at most decreases 2°C after 2 hours.
- c. Press the **Sleep mode** (31) button again to cancel the Sleep mode.

### **Battery Safety**

- CAUTION: There is a danger of explosion if the batteries are incorrectly fitted.
- Ensure that the batteries are installed with the correct polarity.
- It is recommended that batteries are removed if the remote if it is not to be used for a long period of time or if the remote is to be disposed of.
- Replace only with the same or equivalent battery type.
- Store batteries in a cool dry place.
- Do not expose the battery to sunshine, fire, heat or similar, never dispose of batteries in a fire.
- Do not charge non-rechargeable batteries.
- Do not short-circuit batteries.
- Exhausted batteries are to be removed from the product and safely disposed of.

### **WARNING!**

- **DO NOT** ingest the battery, Chemical Burn Hazard.
- **Keep new and used batteries away from children.**
- **If the battery compartment does not close securely, stop using the product and keep away from children.**
- **If you think batteries may have been swallowed or placed inside any part of the body, seek immediate medical attention.**

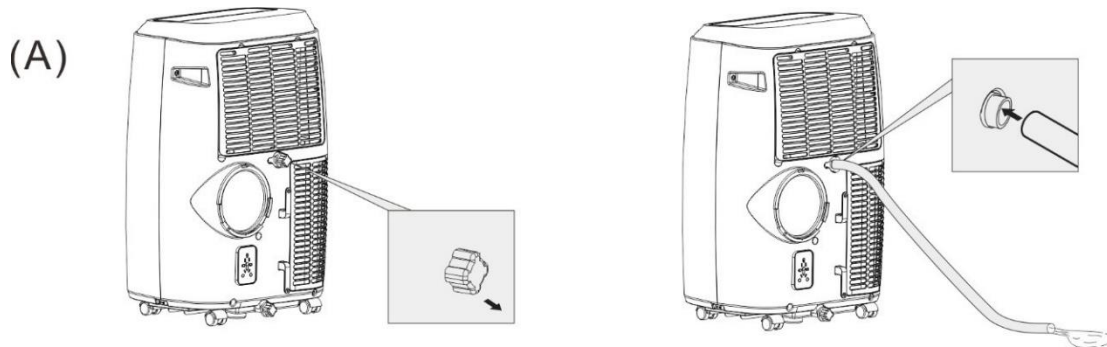
### The Internal Water Tank and Draining

During normal use, most of the moisture collected will be evaporated internally by the unit and expelled through the **Exhaust** (4).

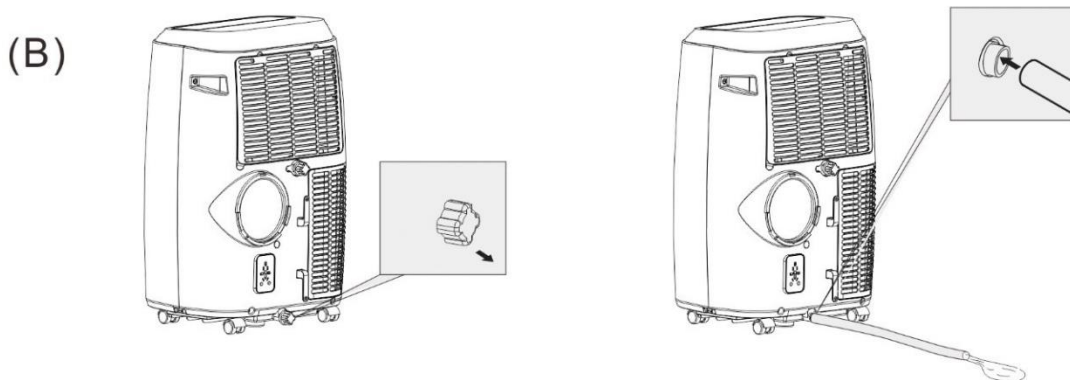
However, the internal water tank will eventually fill to its maximum capacity and the **Water Full Indicator** (20) will illuminate on the **Control Panel** (1) to show the tank is full.

Drain the tanks as follows:

A. To empty the upper water tank, take the unit outside, unscrew and remove the **Upper Tank Drain Cover** (6) at the rear of the unit and allow the tank to drain. If desired attach the **Drain Hose** (38) to the outlet to allow for easier draining.



B. To empty the lower water tank, take the unit outside, unscrew and remove the **Lower Tank Drain Cover** (9) and allow the tank to drain. If desired attach the **Drain Hose** (38) to the outlet to allow for easier draining.



Alternatively connect the **Drain Hose** (38) to the lower tank drain and lead it outside to drain the tank(s) continuously. (The upper tank will drain into the lower tank).

**i** Ensure that the **Upper Tank Drain Cover** (6) and **Lower Tank Drain Cover** (9) are replaced before using the unit again.

The amount of water collected by the tank and the frequency of draining is caused by the relative humidity levels which will vary and will depend on several factors:

1. Avoid placing the Air Conditioner near kitchens or bathrooms (though not in the bathroom!).
2. Avoid drying washing in the same room as the Air Conditioner.
3. Damp weather outside will affect the amount of water collected especially when it is raining.

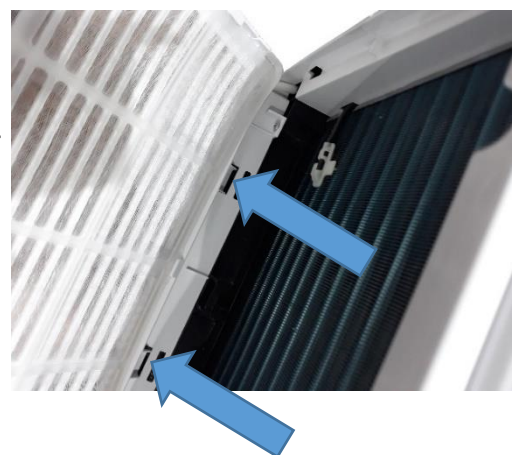
### **Cleaning the Air Filter**

1. Before cleaning the air filter, ensure that the unit is disconnected from the mains supply before removing.
2. To clean the filter, remove the **Air Filter Cover** (5) on the rear of the unit by pulling at the two cut outs (arrowed right) at the top of the cover. Remove the filter from the cover and clean in lukewarm (40°C) water with a mild detergent.
3. After washing allow the filter to dry naturally, laid flat to avoid stretching.



Above: The Air Filter is located behind the Air Filter Cover on the rear of the unit. To remove the cover, pull at the two cut outs arrowed above.

4. Once dry, refit the filter to the **Air Filter Cover** (5) and then replace the cover into the unit by inserting the two tabs (arrowed right) at the bottom of the cover into the slots at the bottom of the **Air Inlet** (7) and then push the cover until it clicks home.



- i** Ensure that the filter has thoroughly dried before refitting it to the unit.
- i** **DO NOT** use the unit without the filter fitted.

### **Safety Shut-Off**

The unit is fitted with an automatic high temperature shut off device, if the **Air Inlet** (7) or **Exhaust** (4) are blocked the unit will shut down safely. After clearing the blockage, allow 5 minutes before restarting the unit.

### **Cleaning and Maintenance**

Clean the surface of the unit with a damp cloth and mild detergent. Excess dust etc. can be removed from grilles and exhaust using the nozzle attachment of a vacuum cleaner.

## **Troubleshooting Guide**

<b><i>Problem</i></b>	<b><i>Possible Cause</i></b>	<b><i>Possible Solution</i></b>
The unit does not power up	No power supply	Power on and turn on the unit
	Water tank is full	Drain the water tank
	Timer function is active	Cancel timer function
	Room temperature is too high (Heating mode)	Reset temperature on unit
	Room temperature is too low (Cooling mode)	Reset temperature on unit
Unit not performing well	The doors or windows are not closed	Make sure all the windows and doors are closed
	Filter is dirty	Remove and clean the filter
	Air Inlet or Cool Air Louvre is blocked	Remove any blockage or debris from the inlet/outlet
Compressor not working	Overheat protection device has operated	Check venting then allow the unit to cool for 5 minutes before restarting
Remote control not working	Operating distance is too far	Move closer to the unit
	Batteries are flat	Replace batteries
Unit is noisy	The unit is located on an uneven surface	Position the unit on a flat level surface
E0 Code displayed	Room temperature sensor failed.	Call after sales service for advice.
E1 Code displayed	Condenser temperature sensor failed	Call after sales service for advice.
E2 Code displayed	Water tank full	Drain the water tank
E3 Code displayed	Evaporator temperature sensor failed	Call after sales service for advice.

## **Technical Specification**

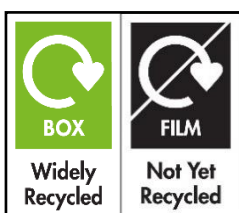
Model Number	COL1579
Supply Voltage	220-240V~ 50Hz
Rated Power	Cooling: 1346W Heating: 1391W
Rated Current	Cooling: 5.9A Heating: 6.3A
Protection Class	I (This Appliance Must Be Earthed)
Unpacked Weight	33 Kgs (approx.)
Capacity	Cooling: 12000 BTU/h (3500W) Heating: 9000BTU/h (2638W)
Refrigerant	R290 (226g)
Operating Pressure	Discharge 2.6MPa Suction 1.0MPa
Maximum Pressure	Discharge 3.2MPa Suction 1.2MPa
IP Rating	IPX0
Sound Power Level	65dB (A)

### **Non-Rewireable Mains Plug**

If your appliance is supplied with a non-rewireable plug fitted to the mains lead and should the fuse needed replacing, you must use an ASTA approved one (conforming to BS 1362 of the same rating). Never use a plug with the fuse cover missing. If in doubt, consult a qualified electrician.

If you need to remove the plug -**DISCONNECT FROM THE MAINS**- and then cut it off the mains lead and immediately dispose of it safely. Never attempt to reuse the plug or insert it into a socket outlet as there is a danger of electric shock.

### **Disposal of the Packaging**

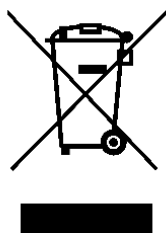


Dispose of paper and cardboard in appropriate paper re-cycling facilities.

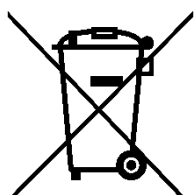
Dispose of recyclable plastics in appropriate plastic re-cycling facilities.

Dispose of non-recyclable plastics in the appropriate plastics collection service.

### **Disposal of the Product**



You should now recycle your waste electrical goods and in doing so help the environment. This symbol means waste electrical products at the end of their useful life should not be disposed of with normal household waste and not sent to landfill. Please ensure it is taken to a suitable facility for disposal. Check with your Local Authority or retailer for recycling advice or visit [www.recycle-more.co.uk](http://www.recycle-more.co.uk) enter your postcode to find out your nearest recycling site.

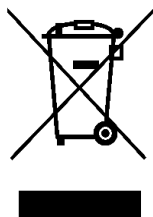


This symbol means batteries and rechargeable batteries may not be disposed of with household waste!  
As the end user you are required to bring all batteries and rechargeable batteries to a collection point run by the Local Authority or visit [www.recycle-more.co.uk](http://www.recycle-more.co.uk) or to a retailer, so that they can be disposed of in an environmentally friendly manner.

## ***Customer Support***

***Should you require any product information, replacement parts or accessories, please contact our customer care team at [help@daewooelectricals.com](mailto:help@daewooelectricals.com) or call 0161 831 7879.***

- ***Replacement parts and accessories are guaranteed for 1 year from the date of purchase.***
- ***It is important to note that your warranty becomes invalid should non Daewoo parts or accessories be used with this appliance***

**UK  
CA****C****€**



# DAEWOO®

## WARRANTY

*Thank you for purchasing your Daewoo product.*

*As part of our commitment to quality, we are offering you an extra years warranty in addition to your 1 year guarantee*

Your Daewoo product is guaranteed for 1 year from the date of original purchase, with proof of purchase or receipt. If any defect should occur due to faulty workmanship or material, your faulty product should be returned to the place of purchase, replacement or refund is at the discretion of the retailer.

The guarantee is subject to the following provisions:

- The product must be correctly installed and operated in accordance with the requirements contained in the instruction manual.
- The product must be used solely for domestic purposes.
- It does not cover general wear and tear, damage, misuse or any consumable parts.
- The guarantee will be rendered invalid if the product is re-sold or has been damaged through inexpert repair.
- The guarantee is only valid within the UK and Eire.

Your standard 1 year guarantee will only be extended to the maximum available for your individual product upon registration. (Note: products must be registered individually and covers the main body and housing). If you do not register your product within 28 days of the original purchase date, your product will only be guaranteed for 1 year.

***To validate your extended 1 year warranty\* please register your purchase online within 28 days of the original purchase date by registering at:***

**<https://help.daewooelectricals.com>**

***or***

**[Contact Us \(daewooelectricals.com\)](https://www.daewooelectricals.com)**

\*Your extended warranty is only valid with proof of purchase receipt and subject to the conditions outlined above.

Daewoo® is a registered trademark.  
Produced and imported under licence by  
ESG Ltd. Manchester M3 1JS UK  
EU Rep: EuroSonic Magpie (ESM) Ltd. Ireland D05 X006  
[www.esg ltd.com](http://www.esg ltd.com)