



HURRICANE STAIR MASTER

Carpet & Upholstery Cleaner

User Manual

*Please refer to the warranty section for terms of your extended guarantee.

Contents

Page No.

2	Contents
3	Reading and Storing the User Manual
3	Important Safety Instructions for Proper Use
6	Explanation of Symbols
7	Description of Parts
7	Before First use of Your Stair Master
7	About Your Stair Master
7	Filling the Clean Water Tank
8	Preparing the Carpet/Upholstery for Cleaning
9	Using Your Stair Master
10	Emptying the Dirty Water Tank
10	Cleaning and Maintenance of Your Stair Master
10	Storing Your Stair Master
11	Technical Specification
11	Troubleshooting Guide
11	Plug Wiring Information
12	Recycling Information
13	Customer Support
Back Page	Warranty Information

READING AND STORING THE USER MANUAL



Before using this product, please read through this manual carefully paying particular attention to the safety instructions. Failure to do so may result in personal injury or damage to the product.

Carefully save this instruction manual for future reference. Ensure the user manual is included when passing the product on to any third parties.

IMPORTANT SAFETY INSTRUCTIONS FOR PROPER USE

When using electrical appliances, basic safety precautions should always be followed.

Only use the product as described in this user manual. Any other use is considered improper and may result in damage to property or persons. The manufacturer or vendor cannot be held liable for damages or injury incurred through improper or incorrect use.

- **Read and familiarise yourself with all operating instructions before using this Stair Master.**
- Before plugging your unit into the mains, visually check that the unit is intact and has not suffered any transit damage.
- Check that the voltage indicated on the data plate corresponds with that of the local network before connecting the appliance to the mains power supply.
- This appliance can be used by persons with reduced physical, sensory or mental capabilities or lack of experience and knowledge if they have been given supervision or instruction concerning use of the appliance in a safe way and understand the hazards involved.
- Children shall not play with the appliance.
- Keep the appliance and its cord out of reach of children less than 8 years when it is energised or cooling down.
- **DO NOT** immerse the appliance or its cord in water or any other liquids.
- **DO NOT** leave the appliance unattended during use.
- **DO NOT** leave the appliance unattended whilst connected to the mains supply.

-
- **DO NOT** use this appliance outdoors.
 - It is imperative to unplug the power cord after the appliance has been used, before it is cleaned and whilst being repaired.
 - Repairs to electrical appliances should only be performed by qualified personnel. Improper repairs may place user at serious risk.
 - **DO NOT** operate this appliance with a damaged plug or cord, after a malfunction or after being dropped or damaged in any way.
 - Regular, periodic checks should be carried out on the mains cable to ensure no damage is evident. Should there be any signs of damage the appliance should not be used.
 - If the power cable is damaged, it should only be replaced by qualified personnel in order to avoid a hazard.
 - **DO NOT** allow the mains cable to hang over sharp edges or come in contact with hot surfaces.
 - **DO NOT** run the mains cable under carpets, rugs, etc.
 - The appliance is not to be used if it has been dropped, if there are visible signs of damage or it is leaking.
 - The plug must be removed from the socket outlet before the clean water tank is filled with water or the waste water tank emptied.
 - The filling aperture must not be opened during use.
 - Allow the unit to cool before storage.
 - Before cleaning, disconnect the appliance from the mains supply and allow to cool.
 - This appliance is intended for household use only and should not be used for industrial purposes.
 - **DO NOT** use any accessories or attachments with this appliance other than those supplied or recommended by supplier.
 - **DO NOT** use this appliance for anything other than its intended use.
 - **DO NOT** push objects into any openings as damage to the
-

-
- appliance and/or electric shock may occur.
- Unplug after each use. Grasp the plug, not the cord.
 - **DO NOT** pull or carry the appliance by the electrical cord.
 - **Caution:** Always wear suitable shoes when using the Stair Master and when changing accessories, do not wear slippers or open toed footwear.
 - Ensure fingers and other objects are never placed in any part of the Stair Master. Clothing or hair may become trapped if the Stair Master is used improperly.
 - Keep hair, loose clothing, jewellery, fingers and all parts of the body away from openings and moving parts.
 - Keep all air vents clear and free of dust, lint, hair and anything else that may reduce airflow.
 - Avoid directing the appliance towards naked flames as the air discharged may extinguish gas fires or pilot lights and may disturb ashes in open fires.
 - Never operate the appliance without water.
 - Never fill the water tanks past the maximum level mark.
 - **DO NOT** run the Stair Master over hot ashes or lit cigarettes, etc.
 - Do not use the Stair Master without the water tanks fitted.
 - **DO NOT** run the Stair Master over any large or broken objects such as glass.
 - **DO NOT** run the Stair Master over anything that is burning or smoking such as cigarettes, matches or hot ashes.

Explanation of Symbols

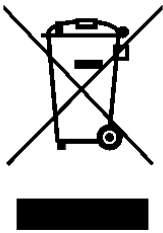
The following warning symbols or words are used in this instruction manual:



Products labelled with UK Conformity Assessment identifies products conforming to UK statutory requirements.



Products labelled with this symbol conform to applicable provisions of the European Economic Area.



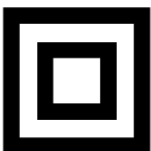
You should now recycle your waste electrical goods and in doing so help the environment. This symbol means waste electrical products at the end of their useful life should not be disposed of with normal household waste and not sent to landfill. Please ensure it is taken to a suitable facility for disposal. Check with your Local Authority or retailer for recycling advice or visit www.recycle-more.co.uk or www.weeeireland.ie enter your postcode to find out your nearest recycling site.



This symbol provides useful additional information on the use of this product.



This symbol indicates that the supply uses an alternating current mains supply.



This symbol indicates that the appliance is electrically double insulated and therefore does not require an earth connection.



This designates a hazard with moderate risk, which may result in severe injury or damage to the product if not adhered to.

Description of Parts



1. On/Off Switch
2. Handle
3. Clean Water Tank
4. Main Unit
5. Exhaust Outlet
6. Dirty Water Drain Plug
7. Suction Nozzle/Scrubbing Brush
8. Spray Jet.
9. Dirty Water Tank.
10. Dirty Water Tank Release Button
11. Solution Spray Button

Before First Use of Your Stair Master

- Remove all packing materials and discard responsibly.
- Take care whilst opening the carton as a sharp blade may damage the product.
- Ensure that all parts are present – see '**Description of Parts**' above:

About Your Stair Master

- This Stair Master is designed to clean small areas of household fabric surfaces, such as patches of carpets and upholstery, it is not suitable for use as a conventional vacuum cleaner.
- Do not use the Stair Master on other materials.
- Ensure the water does not enter electrical parts.

Filling the Clean Water Tank (3)

1. Hold the cleaner by the handle and release the clean water tank by holding the two upper indentations and pulling up until the tank comes off.

2. Turn the tank upside down and unscrew the filling cap (circled right).

2



**3**

3. Fill the tank with the chosen cleaning solution and warm water (maximum of 40°C).

Follow the cleaning solution manufactures guidelines for the ratio of water to cleaning solution. It is advised to mix this in a jug prior to filling the tank. Ensure that the water level is not above the 'MAX' mark (arrowed) on the side of the tank:

Do not use any high foaming cleaners as an excessive amount of foam impairs the function of the cleaner and may damage the unit.

i In hard water areas it is strongly recommended that distilled/purified water is used to avoid calcium build up which may damage the Stair Master.

4. Screw the filling cap back on, turn the tank the correct way up and replace the **Clean Water Tank (3)** into the Stair Master. Apply slight pressure and it will snap back into its location.

i **DO NOT** overfill the tank as this will cause a spillage/leakage.
DO NOT operate the Stair Master with an empty **Clean Water Tank (3)**.

Preparing the Carpet/Upholstery for Cleaning

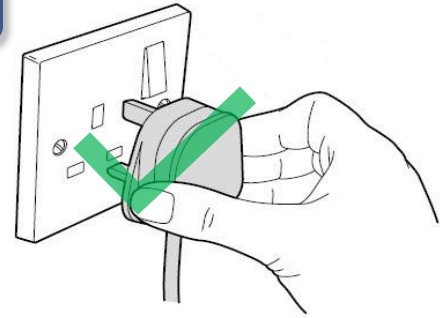
⚠ WARNING! **DO NOT** use this Stair Master as a dry vacuum cleaner as this will damage the appliance.

Vacuum the area to be cleaned with a conventional vacuum cleaner; if possible, remove all furniture from the carpet area to be cleaned. If large pieces of furniture can't be moved, place plastic sheeting around the base to protect it from any water damage to the legs.

Before cleaning, dampen a white cloth and rub the cloth gently over a small test area on the carpet or upholstery to be cleaned and check for any colour bleeding. If the cloth remains clean, it should be safe to continue.

Using Your Stair Master

1. Fully unravel the mains cable and insert the mains plug into the nearest mains socket and switch the socket on (if applicable).

1**2**

2. Press the **On/Off Switch** (1 – arrowed left) to the '1' position to power up the Stair Master.

3. Grip the Stair master by the **Handle** (2).

4. Push the cleaner forward in a straight line on the carpet/upholstery as shown right. Spray cleaning solution onto the area by pressing the **Solution Spray Button** (11) and make gentle forward and backward movements to work the solution into carpet/upholstery.

5. Release **Solution Spray Button** (11) and go back over the treated area and vacuum the dirty water up.

6. The dirty water will go into the **Dirty Water Tank** (9).

7. Repeat the above steps slightly overlapping the area you have treated.

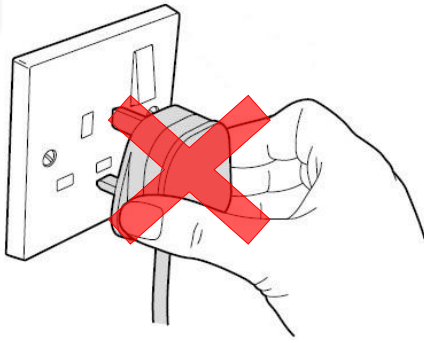
8. In the event of stubborn stains, go over the area several times, allowing the area to dry between each clean.

9. Repeat step 4 to 8 if necessary if the area to be cleaned requires further cleaning.

3

NOTE: Do not spray water continually in the same place, as the water will quickly be absorbed. If the water penetrates too deeply and is not sufficiently re-absorbed, mildew could start to form.

Emptying the Dirty Water Tank (9)

A


A. Ensure the mains plug is removed from the socket before emptying the **Dirty Water Tank (9)**.

B & C

B. Once the dirty water has reached the **'MAX'** mark, the **Dirty Water Tank (9)** must be emptied.

C. Press the **Dirty Water Tank Release Button (10)** and lift the **Dirty Water Tank (9)** up clear of the Stair Master. Hold the tank over a sink or drain, remove the **Dirty Water Drain Plug (6)** and drain the dirty water out of the tank as shown right:

D. Rinse the **Dirty Water Tank (9)** clean with warm water before refitting the tank back onto the Stair Master.



Cleaning & Maintenance of Your Stair Master

⚠ WARNING! Always disconnect the stair master from the mains power supply before cleaning.

- Empty both water tanks after use ensuring that the **Dirty Water Tank (9)** has been cleaned out as described above.
- Wipe the outside of the main body with a clean, soft cloth that has been soaked in warm water and gently wrung out.
- If there is any stubborn dirt or grime, apply a small amount of a gentle kitchen detergent to the cloth and wipe the area until it is clean. Thoroughly rinse the cloth and wipe the area again until no detergent residue remains.
- Do not submerge the appliance in water or any other liquids.

Storing Your Stair Master

- **DO NOT** wrap the mains cable around the unit.
- **DO NOT** store the Stair Master with water in either tank – rinse the tanks out and allow to thoroughly dry before storage.
- Store the Stair Master in a cool, dry place away from direct sunlight.

Technical Specification

Model Number	FLR00161
Rated Voltage	220-240V AC ~ 50Hz
Rated Power	500W
Protection Class	II
Clean Water Tank Capacity	480ml (max.)
Dirty Water Tank Capacity	900ml (max.)
Water Jet Flow	150ml/min. (approx.)
Water Temperature	40°C (max.)
IP Rating	IPX4
Weight (without accessories)	2.5kg
Dimensions	230mm (h) x 200mm (w) x 340mm (d)

Troubleshooting Guide

<i>Problem</i>	<i>Possible Cause</i>	<i>Solution</i>
Unit fails to turn on.	The unit may not be properly plugged in.	Ensure the plug is fully inserted into the socket and the socket is switched on.
	The fuse may have blown.	Check the fuse by substitution.
	The motor has overheated	Switch off and allow the unit to cool before reuse.
	The On/Off switch is not switched on.	Press the On/Off Switch to the 'I' position
The appliance is not producing any spray.	The water tank is empty.	Fill the water tank with up to the MAX mark with clean water.
	The spray jet (8) is blocked.	Clean the spray jet (8).
Low suction during cleaning.	The Dirty Water Tank is full.	Empty the Dirty Water Tank.
	The Dirty Water Tank is not installed properly.	Check the Dirty Water Tank is installed properly.

Non-Rewireable Mains Plug

If your appliance is supplied with a non-rewireable plug fitted to the mains lead and should the fuse need replacing, you must use an ASTA approved one (conforming to BS 1362 of the same rating). Never use a plug with the fuse cover missing. If in doubt, consult a qualified electrician.

If you need to remove the plug – DISCONNECT FROM THE MAINS – and then cut it off the mains lead and immediately dispose of it safely. Never attempt to reuse the plug or insert it into a socket outlet as there is a danger of electric shock.

Recycling Information

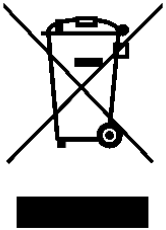
Disposal of the Packaging

Dispose of paper and cardboard in appropriate paper re-cycling facilities.

Dispose of recyclable plastics in appropriate plastic re-cycling facilities.

Dispose of non-recyclable plastics in the appropriate plastics collection service.

Disposal of the Product



You should now recycle your waste electrical goods and in doing so help the environment. This symbol means waste electrical products at the end of their useful life should not be disposed of with normal household waste and not sent to landfill. Please ensure it is taken to a suitable facility for disposal. Check with your Local Authority or retailer for recycling advice or visit www.recycle-more.co.uk or www.weeeireland.ie enter your postcode to find out your nearest recycling site.

Customer Support

Should you require any product information, replacement parts or accessories, please contact our customer care team on 0161 831 7879 (8.30am-4.30pm Monday to Thursday, 8.00am-4.00pm Friday) and select option 3 or by contacting us via email:

help@daewoelectricals.com.

- Replacement parts and accessories are guaranteed for 1 year from the date of purchase.
- It is important to note that your warranty becomes invalid should non Daewoo parts or accessories be used with this appliance.





DAEWOO®

WARRANTY

Thank you for purchasing your Daewoo Vacuum.

As part of our commitment to quality, we are offering you an extra 2 years warranty in addition to your 1 year guarantee

Your Daewoo vacuum product is guaranteed for 1 year from the date of original purchase, with proof of purchase or receipt. If any defect should occur due to faulty workmanship or material, your faulty vacuum should be returned to the place of purchase, replacement or refund is at the discretion of the retailer.

The guarantee is subject to the following provisions:

- The product must be correctly installed and operated in accordance with the requirements contained in the instruction manual.
- The product must be used solely for domestic purposes.
- It does not cover general wear and tear, damage, misuse or any consumable parts.
- The guarantee will be rendered invalid if the product is re-sold or has been damaged through inexpert repair.
- The guarantee is only valid within the UK and Eire.

Your standard 1 year guarantee will only be extended to the maximum available for your individual product upon registration. (Note: products must be registered individually and covers the main body and housing). If you do not register your product within 28 days of the original purchase date, your product will only be guaranteed for 1 year.

To validate your extended 2 year warranty please register your purchase online within 28 days of the original purchase date by registering at:*

<https://help.daewooelectricals.com>

or

[Contact Us \(daewooelectricals.com\)](https://www.daewooelectricals.com)

*Your extended warranty is only valid with proof of purchase receipt and subject to the conditions outlined above.

Daewoo is a registered trademark.
Produced and imported under licence by
Eurosonic Group Limited
Brightgate House
1 Brightgate Way
Manchester M32 0TB UK
EU Rep: EuroSonic Magppie (ESM) Ltd. Ireland D05 X006
www.esgltd.com