



12 IN 1 UPRIGHT OR HAND HELD STEAM MOP

WITH 1300W POWER

User Manual

*Please refer to the warranty section for terms of your extended guarantee.

Contents

Page No.	
2	Contents
3	Reading and Storing the User Manual
3	Important Safety Instructions for Proper Use
6	Explanation of Symbols
7	Description of Parts & Accessories
8	Before First Use of Your Steam Mop
8	Assembling Your Steam Mop
9	Attaching the Microfibre Pad to the Floor Attachment
9	Attaching the Carpet Glider to the Floor Attachment
10	Filling the Water Tank
10	Using Your Steam Mop
11	Using Your Steamer Handheld
12	Table of uses for the Steamer Attachments
13	Cleaning & Maintenance
13	Cleaning the Microfibre Pad
13	Replacement Microfibre Pads
14	Storing Your Steam Mop
14	Plug Wiring Information
14	Technical Specification
15	Recycling Information
15	Customer Support
Back Page	Warranty Information

READING AND STORING THE USER MANUAL



Before using this product, please read through this manual carefully paying particular attention to the safety instructions. Failure to do so may result in personal injury or damage to the product.

Carefully save this instruction manual for future reference. Ensure the user manual is included when passing the product on to any third parties.

IMPORTANT SAFETY INSTRUCTIONS FOR PROPER USE

When using electrical appliances, basic safety precautions should always be followed.

Only use the product as described in this user manual. Any other use is considered improper and may result in damage to property or persons. The manufacturer or vendor cannot be held liable for damages or injury incurred through improper or incorrect use.

- **Read and familiarise yourself with all operating instructions before using this Steam Mop.**
- Before plugging your unit into the mains, visually check that the unit is intact and has not suffered any transit damage.
- Check that the voltage indicated on the data plate corresponds with that of the local network before connecting the appliance to the mains power supply.
- This appliance can be used by persons with reduced physical, sensory or mental capabilities or lack of experience and knowledge if they have been given supervision or instruction concerning use of the appliance in a safe way and understand the hazards involved.
- Children shall not play with the appliance.
- Keep the appliance and its cord out of reach of children less than 8 years when it is energised or cooling down.
- **DO NOT** immerse the appliance or its cord in water or any other liquids.
- **DO NOT** leave the appliance unattended during use.
- **DO NOT** leave the appliance unattended whilst connected to the mains supply.
- **DO NOT** use this appliance outdoors.

- It is imperative to unplug the power cord after the appliance has been used, before it is cleaned and whilst being repaired.
- Repairs to electrical appliances should only be performed by a qualified electrician. Improper repairs may place user at serious risk.
- **DO NOT** operate this appliance with a damaged plug or cord, after a malfunction or after being dropped or damaged in any way.
- Regular, periodic checks should be carried out on the mains cable to ensure no damage is evident. Should there be any signs of damage the appliance should not be used.
- If the power cable is damaged, it should only be replaced by qualified personnel in order to avoid a hazard
- **DO NOT** allow the mains cable to hang over sharp edges or come in contact with hot surfaces.
- **DO NOT** run the mains cable under carpets, rugs, etc.
- The Steam Mop is not to be used if it has been dropped, if there are visible signs of damage or it is leaking.
- The plug must be removed from the socket outlet before the reservoir is filled with water.
- The filling aperture must not be opened during use.
- Allow the unit to cool before storage.
- Before cleaning, disconnect the appliance from the mains supply and allow to cool.
- This appliance is intended for household use only and should not be used for industrial purposes.
- **DO NOT** use any accessories or attachments with this appliance other than those supplied or recommended by supplier.
- **DO NOT** use this appliance for anything other than its intended use.
- **DO NOT** push objects into any openings as damage to the appliance and/or electric shock may occur.

-
- Unplug after each use. Grasp the plug, not the cord.
 - **DO NOT** direct steam at people, animals, electrical appliances or electrical socket outlets.
 - Steam must not be directed towards equipment containing electrical components such as the interior of ovens.
 - **DO NOT** pull or carry the Steam Mop by the electrical cord.
 - **DO NOT** use the steam mop in enclosed spaces or spaces that may contain vapours given off by paint thinners, oil-based explosive or toxic vapours or flammable dust.
 - Ensure that the micro fibre cleaning pad is fitted correctly before use.
 - **DO NOT** use on leather or wax polished furniture or floors, synthetic fabrics, velvet or other delicate or steam sensitive materials.
 - **DO NOT** use on unsealed hard floor surfaces. Additionally, on surfaces that have been treated with wax or polish, the sheen may be removed by the action of the steam. It is always recommended to test an isolated area of the surface to be cleaned before proceeding. It is also recommended to check the care instructions from the floor manufacturer.
 - **Caution:** Always wear suitable shoes when using the steam mop and when changing accessories, do not wear slippers or open toed footwear.
 - **Caution:** This Steam Mop emits hot steam to sanitize the area being cleaned, this means that the cleaning head and cleaning pad get very hot during use and remain hot for some time after use.

Explanation of Symbols

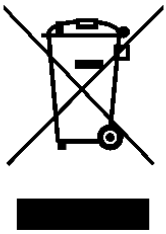
The following warning symbols or words are used in this instruction manual:



Products labelled with UK Conformity Assessment identifies products conforming to UK statutory requirements.



Products labelled with this symbol conform to applicable provisions of the European Economic Area.



You should now recycle your waste electrical goods and in doing so help the environment. This symbol means waste electrical products at the end of their useful life should not be disposed of with normal household waste and not sent to landfill. Please ensure it is taken to a suitable facility for disposal. Check with your Local Authority or retailer for recycling advice or visit www.recycle-more.co.uk, enter your postcode to find out your nearest recycling site.



This symbol provides useful additional information on the use of this product.



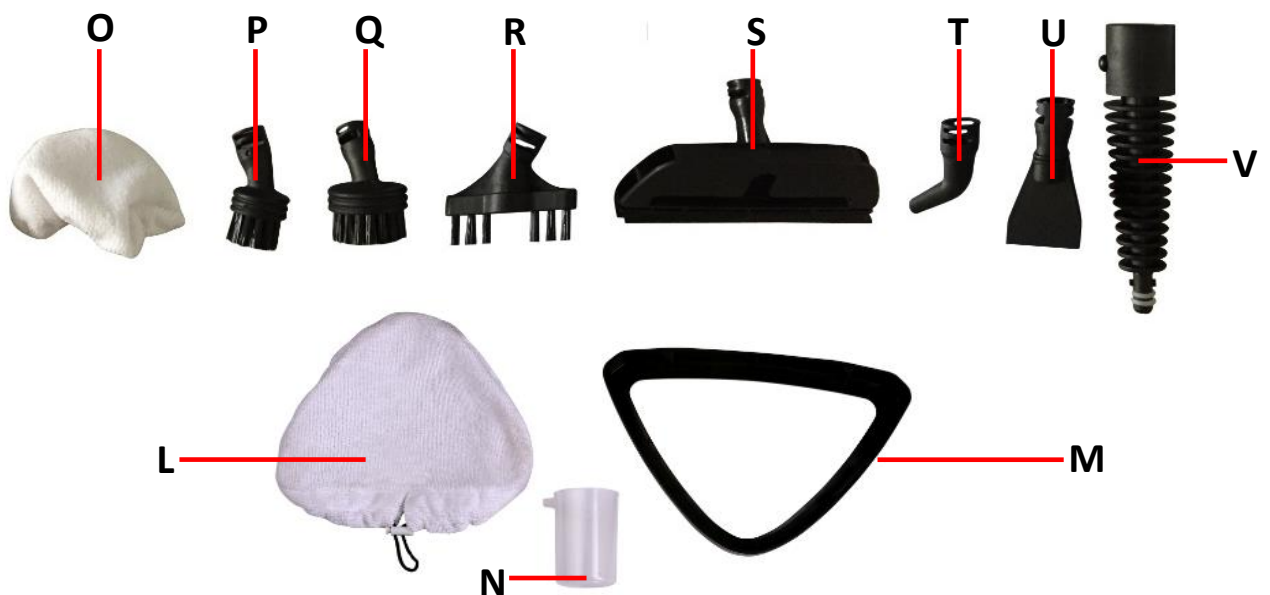
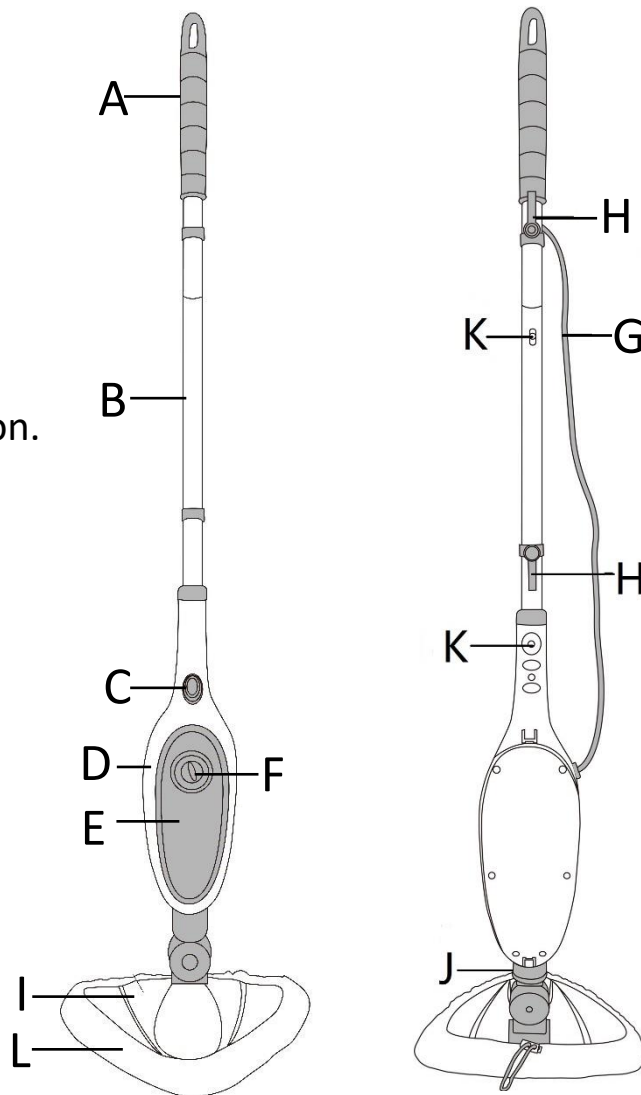
This symbol indicates that the supply uses an alternating current mains supply.



This designates a hazard with moderate risk, which may result in severe injury or damage to the product if not adhered to.

Description of Parts & Accessories

- A. Handle.
- B. Pole
- C. On/Off Switch.
- D. Main Body.
- E. Water Tank.
- F. Water Tank Filling Spout.
- G. Mains Cable.
- H. Upper Mains Cable Hooks.
- I. Floor Attachment.
- J. Floor Attachment Lock Button.
- K. Handle Lock Buttons.
- L. Microfibre Pad.
- M. Carpet Glider.
- N. Measuring Cup.
- O. Garment Steamer Cloth.
- P. Small Round Brush.
- Q. Large Round Brush.
- R. Grout Cleaning Brush.
- S. Window Squeegee/Fabric Steaming Tool.
- T. Angled Nozzle.
- U. Scraping Tool.
- V. Adaptor.



Before first use of Your Steam Mop

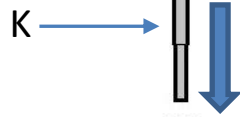
Remove all packing materials and discard responsibly.

Check that all items are present – see **Description of Parts** above.

Assembling Your Steam Mop

⚠ WARNING! Before assembling the Steam Mop Ensure that the mains plug is not inserted into the mains socket.

i The handle can be released by pressing the release button (K rear).



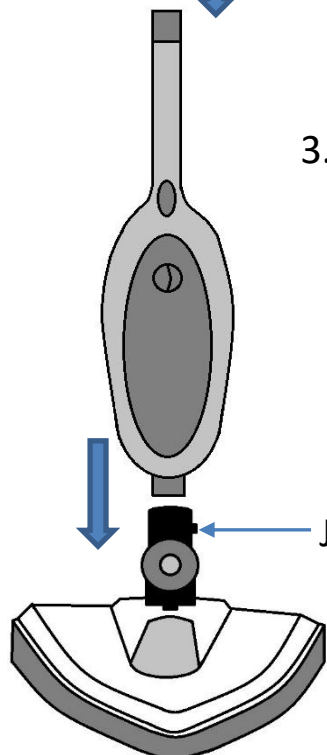
1. Push the handle (A) into the top of the Pole (B) until it clicks into place.

i The pole can be released by pressing the release button (K rear).



2. Slide the handle (A) and Pole (B) into the Main Body (D) until clicks into place.

3. To use as a floor mop, push the Main Body (D) into the Floor Attachment (I).



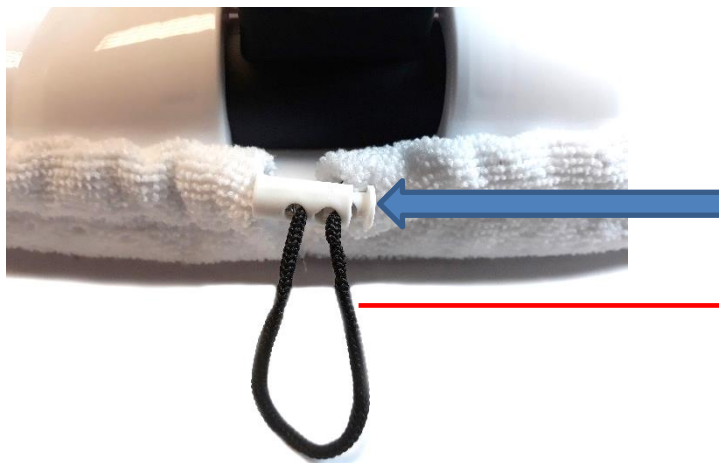
NB To remove the Floor Attachment (I) from the Main Body (D) press the release button (J) arrowed left.

Attaching the Micro Fibre Pad to the Floor Attachment (for cleaning hard floors)

1. Wrap the Microfibre Pad (L) around the Floor Attachment (I) as shown below:



2. Press the button on the cord clamp in and pull the cord until the pad is securely attached to the floor attachment then release the button on the cord clamp as below:



Press the cord clamp in in the direction of the arrow whilst adjusting the cord. Let the catch go once the pad is attached.

Pull the cord until the Micro Fibre Pad (L) is a snug fit onto the floor attachment (I).

Attaching the Carpet Glider to the Floor Attachment (for cleaning Carpets)

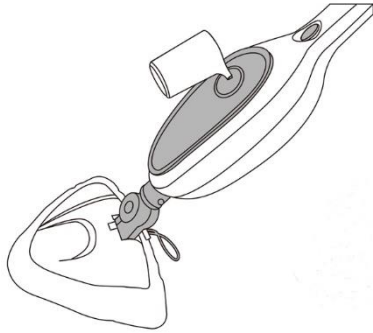
1. Attach the Microfibre Pad (L) as shown above.

2. The Carpet Glider (M) can now be clipped into place onto the Floor Attachment (I) as below:

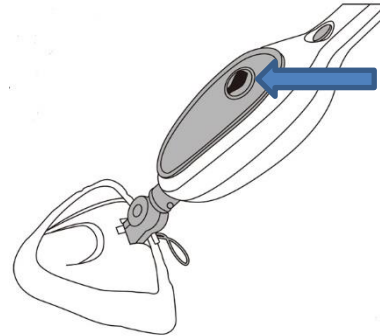


Filling the Water Tank

1. Unscrew the bung from the Water Tank Filling Spout (F) and tip the Steam Mop back at an angle of 45°
2. Fill the Water Tank (E) using the Measuring Cup (N) supplied. Fill the cup to the 175ml mark in order to completely fill the tank as below left:
3. Replace the bung in the Water Tank Filling Spout (F) as below right – note the correct full water level:



Left: Fill the water tank through the Water Tank Filling Spout (F) using the measuring cup (N) supplied.



Left: Replace the bung in the Water Tank Filling Spout (F) (arrowed).

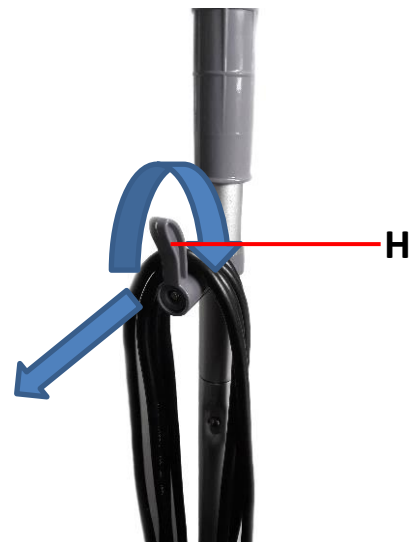
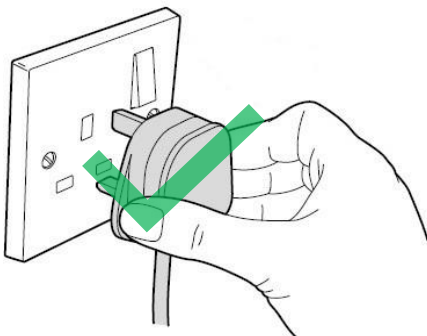
4. The steam mop is now ready for use.

i **DO NOT** overfill the water tank as this will cause a spillage/leakage. Do not operate the steam mop with an empty water tank.

Using Your Steam Mop

⚠ WARNING! **DO NOT** touch the Floor Attachment during or just after use as hot steam is emitted from this product and scalding may occur.

1. Remove the **Mains Cable** (G) from the **Mains Cable Storage** hooks (H) by pulling the hooks and rotating them downwards, the mains cable can now be removed. **NB** after removing the mains cable rotate the hooks back to the vertical position to enable the mains cable to be replaced later.



2. Plug the steam mop into a suitable socket outlet and switch on (if applicable).

- Press the On/Off switch (C) to the I position, the switch will illuminate RED and the internal pump will run, after a couple of minutes steam will exit from the base and the steam mop is ready for use:



i The Steam Mop is designed to clean many floor surfaces, such as ceramic, marble, carpet, stone, linoleum, vinyl, parquet and sealed hardwood floors.

Please be aware that some floor types are not suitable for steam cleaning and extra care is needed:

- The heat and steam action may remove the wax on floor surfaces treated with wax.
- Do not use on unsealed flooring (e.g., unvarnished, unwaxed, wood floors).
- Do not allow the steam mop to stand on wood or heat sensitive floors for excessive periods of time as this will cause the wood grain to warp/split and damage the surface.
- Whilst cleaning vinyl, linoleum or any other heat sensitive floors, use extra caution a too much heat can melt glue in the flooring.
- Use only on laminated flooring that has been well laid without any gaps or cracks that would permit the entry of moisture.
- Before cleaning the floor test the steam mop on a small isolated area of flooring prior to check for any damage.
- The carpet glider should **only** be used on carpets and rugs. Using the carpet glider on other floor surfaces may cause streaking and possibly scratches.
- Do not leave the steam mop to stand on carpets as it may cause water marks and discolouration.

Using Your Steamer Hand held

- Remove the Handle (A), Pole (B) and Floor Attachment (I) from the Main Body (D) in order to use the Main Body (D) as a hand-held steamer. Insert the Adaptor (V) into the outlet of the Main Body (D) of the steamer.



NB to release the Adaptor (V) press button 1 as above.

2. Next, attach one of the below attachments by twisting them onto the end of the Adaptor (V) above:



⚠ WARNING! This Steam cleaner emits hot steam during use, care must be taken not direct steam at people, animals, electrical appliances or electrical socket outlets. Do not steam clean equipment containing electrical components such as the interior of ovens.

Table of uses for the Steamer Attachments

Attachment	Uses
P. Small Round Brush Q. Large Round Brush	General purpose cleaning brushes for use in kitchens, bathrooms. etc.
R. Grout Cleaning Brush	For use on tile grouting or where detailed cleaning is required.
S. Window Squeegee	This attachment can be used to clean Windows, Tiles, etc.
T. Angled Nozzle	Cleaning in hard to reach areas such as around taps and corners.
U. Scraping Tool	Ideal for cleaning flat surfaces such as worktops.
S. & O. Window Squeegee & Cleaning Pad	Use this combination to clean and freshen up fabrics such as upholstery, curtains, etc.

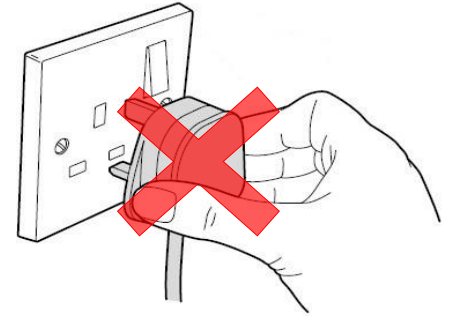


Left: Whilst cleaning fabrics, use the Window Squeegee (S) with the Cleaning Cloth (O) fitted.

Cleaning and Maintenance

Before cleaning ensure the steam mop is switched off, disconnected from the mains supply and fully cooled.

- Empty the water tank after every use and before cleaning.
- Do not immerse the appliance in water.
- If the steam output of your steam mop is reduced or stops all together, you may need to remove the lime scale which builds up over time and greatly affects the steam mop's performance.
- It is necessary to remove this lime scale; the frequency of removal will depend on the water hardness and how often the steam mop is used.
 1. Prepare a solution of 1/3 white vinegar and 2/3 water and add to the water tank.
 2. Plug the steam mop in, lift it clear of the floor and switch it on. Allow the mop to steam until the vinegar/water solution is used up.
 3. Repeat steps 1 and 2 until there is a normal steam flow.
 4. Fill the water tank with clean water and repeat step 2 to clean the tank and steam nozzles of the vinegar solution.



i Perform test cleaning on an isolated area after each lime scale cleaning before use to ensure no debris is left in the system.

i *It is recommended that lime scale removal is carried out 20 – 45 times you use a full tank of water. The harder the water in your area the more frequent lime scale removal should be done. In areas that have hard water, it is advised that distilled/demineralised water should be used for optimum performance.*

Cleaning the Microfibre Pad

The microfibre pads are machine washable up 60°C, for best results lay flat to dry naturally.

IMPORTANT: Never use bleach or fabric conditioner when washing the microfibre pad. Do not Iron or tumble dry.

Replacement Microfibre Pads

Replacement microfibre pads are available by telephoning 0161 831 7879 opt. 3 (9.00am-5.00pm Monday-Thursday, 8.00am – 4.00pm Friday) or contacting customerservices@esg ltd.com

Storing Your Steam Mop

- After use, switch the steam mop off, disconnect from the mains supply and allow to cool.
- Empty any residual water from the water tank and clean the external surface with a clean soft cloth, do not use harsh or abrasive cleaning products.
- Do not store the Steam Mop with a damp Microfibre floor pad attached.
- Place the Steam Mop in a cool, dry place away from direct sunlight.

Right: Wrap the mains cable around the Cable Storage hooks (H) whilst the appliance is not being used.



Non-Wireable Mains Plug

If your appliance is supplied with a non-wireable plug fitted to the mains lead and should the fuse need replacing, you must use an ASTA approved one (conforming to BS 1362 of the same rating). Never use a plug with the fuse cover missing. If in doubt, consult a qualified electrician.

If you need to remove the plug – DISCONNECT FROM THE MAINS – and then cut it off the mains lead and immediately dispose of it safely. Never attempt to reuse the plug or insert it into a socket outlet as there is a danger of electric shock.

Technical Specification

Rated Voltage	220-240V AC ~ 50Hz
Rated Power	1300W
Protection Class	I (The Appliance Must Be Earthed)
Model Number	FLR00170
IP Rating	IPX4
Heating Time	20-35 seconds
Steaming Time	12 minutes ±2m

Recycling Information

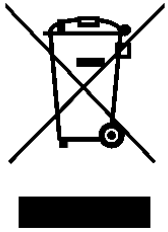
Disposal of the Packaging

Dispose of paper and cardboard in appropriate paper re-cycling facilities.

Dispose of recyclable plastics in appropriate plastic re-cycling facilities.

Dispose of non-recyclable plastics in the appropriate plastics collection service.

Disposal of the Product



You should now recycle your waste electrical goods and in doing so help the environment. This symbol means waste electrical products at the end of their useful life should not be disposed of with normal household waste and not sent to landfill. Please ensure it is taken to a suitable facility for disposal. Check with your Local Authority or retailer for recycling advice or visit www.recycle-more.co.uk, enter your postcode to find out your nearest recycling site.

Customer Support

Should you require any product information, replacement parts or accessories, please contact our customer care team at help@daewooelectricals.com or call 0161 831 7879.

- *Replacement parts and accessories are guaranteed for 1 year from the date of purchase.*
- *It is important to note that your warranty becomes invalid should non Daewoo parts or accessories be used with this appliance*





DAEWOO®

WARRANTY

Thank you for purchasing your Daewoo Steam Mop.

As part of our commitment to quality, we are offering you an extra 2 years warranty in addition to your 1 year guarantee

Your Daewoo product is guaranteed for 1 year from the date of original purchase, with proof of purchase or receipt. If any defect should occur due to faulty workmanship or material, your faulty vacuum should be returned to the place of purchase, replacement or refund is at the discretion of the retailer.

The guarantee is subject to the following provisions:

- The product must be correctly installed and operated in accordance with the requirements contained in the instruction manual.
- The product must be used solely for domestic purposes.
- It does not cover general wear and tear, damage, misuse or any consumable parts.
- The guarantee will be rendered invalid if the product is re-sold or has been damaged through inexpert repair.
- The guarantee is only valid within the UK and Eire.

Your standard 1 year guarantee will only be extended to the maximum available for your individual product upon registration. (Note: products must be registered individually and covers the main body and housing). If you do not register your product within 28 days of the original purchase date, your product will only be guaranteed for 1 year.

To validate your extended 2 year warranty please register your purchase online within 28 days of the original purchase date by registering at:*

<https://help.daewooelectricals.com>

or

[Contact Us \(daewooelectricals.com\)](https://www.daewooelectricals.com)

*Your extended warranty is only valid with proof of purchase receipt and subject to the conditions outlined above.

Daewoo is a registered trademark.
Produced and imported under licence by
Eurosonic Group Limited
Brightgate House
1 Brightgate Way
Manchester M32 0TB UK
EU Rep: EuroSonic Magppie (ESM) Ltd. Ireland D05 X006
www.esgltd.com