



\*Please refer to the warranty section for terms of your extended guarantee

# FOLDABLE HEATED AIRER WITH WINGS



---

## READING AND STORING THE USER MANUAL



Before using this product, please read through this manual carefully paying particular attention to the safety instructions. Failure to do so may result in personal injury or damage to the product.

Carefully save this instruction manual for future reference. Ensure the user manual is included when passing the product on to any third parties.

## IMPORTANT SAFETY INSTRUCTIONS FOR PROPER USE

**When using electrical appliances, basic safety precautions should always be followed.**

Only use the product as described in this user manual. Any other use is considered improper and may result in damage to property or persons.

The manufacturer or vendor cannot be held liable for damages or injury incurred through improper or incorrect use.

- **Read and familiarise yourself with all operating instructions before using this Heated Aired.**
- Before plugging your unit into the mains, visually check that the unit is intact and has not suffered any transit damage
- **DO NOT** install the appliance directly below an electrical socket.
- **DO NOT** use this Heated Aired with a programmer, timer, separate remote-control system or any other device that switches the heater on automatically, since a fire risk exists if the Heated Aired is positioned incorrectly.
- **DO NOT** use this Heated Aired with an extension cable.
- **WARNING!** This appliance is intended only for drying textiles washed in water.
- **CAUTION — Some parts of this product can become very hot and cause burns. Particular attention has to be given where children and vulnerable people are present.**
- Check that the voltage indicated on the data plate corresponds with that of the local network before connecting the appliance to the mains power supply.

- Close supervision is required when using this appliance near children.
- Never leave this appliance within reach of children.
- This appliance can be used by children aged from 8 years and above and persons with reduced physical, sensory or mental capabilities or lack of experience and knowledge if they have been given supervision or instruction concerning use of the appliance in a safe way and understand the hazards involved. Children shall not play with the appliance. Cleaning and user maintenance shall not be made by children without supervision.
- Children of less than 3 years should be kept away unless continuously supervised.
- Children aged from 3 years and less than 8 years shall only switch on/off the appliance provided that it has been placed or installed in its intended normal operating position and they have been given supervision or instruction concerning use of the appliance in a safe way and understand the hazards involved. Children aged from 3 years and less than 8 years shall not plug in, regulate and clean the appliance or perform user maintenance.
- **DO NOT** use this Heated Airing in the immediate surroundings of a bath, a shower or a swimming pool.
- **DO NOT** immerse the appliance or its cord in water or any other liquids.
- Always use this appliance on a solid, level, non-flammable surface.
- **DO NOT** use this appliance outdoors.
- It is imperative to unplug the power cord after the appliance has been used, before it is cleaned and whilst being repaired.
- Repairs to electrical appliances should only be performed by qualified personnel. Improper repairs may place user at serious risk.

- 
- **DO NOT** operate this appliance with a damaged plug or cord, after a malfunction or after being dropped or damaged in any way.
  - Regular, periodic checks should be carried out on the mains cable to ensure no damage is evident. Should there be any signs of damage the appliance should not be used.
  - If the power cable is damaged, it should only be replaced by suitably qualified personnel in order to avoid a hazard.
  - **DO NOT** allow the mains cable to hang over sharp edges or come in contact with hot surfaces.
  - **DO NOT** run the mains cable under carpets, rugs, etc.
  - Allow the unit to cool before storage.
  - Before cleaning, disconnect the appliance from the mains supply and allow to cool.
  - Never place the appliance near to flammable material or high pressure containers. (e.g., Paper, wood, petrol, solvents, spray canisters etc.)
  - This appliance is intended for household use only and should not be used for industrial purposes.
  - **DO NOT** use any accessories or attachments with this appliance other than those supplied or recommended by supplier.
  - **DO NOT** use this appliance for anything other than its intended use.
  - **DO NOT** push objects into any openings as damage to the appliance and/or electric shock may occur.
  - Ensure appliance is situated in an open area.
  - The appliance should not be installed in areas which have a fire-risk, such as garages, stables or wooden sheds; this is applicable also for rooms in which highly inflammable gasses or dust can develop. Danger of fire!!
  - Unplug after each use. Grasp the plug, not the cord.

**THIS APPLIANCE MUST BE EARTHED**

**i** During the first few minutes of initial use, you may notice a slight odour and a little smoke. This is normal and will quickly disappear, It is the coating applied to the heating elements to prevent any corrosion during transit.

### Explanation of Symbols

The following warning symbols or words are used in this instruction manual:

**UK  
CA**

Products labelled with this symbol conform to applicable provisions of the European Economic Area.

**CE**

Products labelled with this symbol conform to applicable provisions of the European Economic Area.



You should now recycle your waste electrical goods and in doing so help the environment. This symbol means waste electrical products at the end of their useful life should not be disposed of with normal household waste and not sent to landfill. Please ensure it is taken to a suitable facility for disposal. Check with your Local Authority or retailer for recycling advice or visit [www.recycle-more.co.uk](http://www.recycle-more.co.uk) enter your postcode to find out your nearest recycling site.



This symbol indicates that the supply uses an alternating current mains supply.

**Before the first time you use your Heated Airing**

Remove all packing materials and discard responsibly.

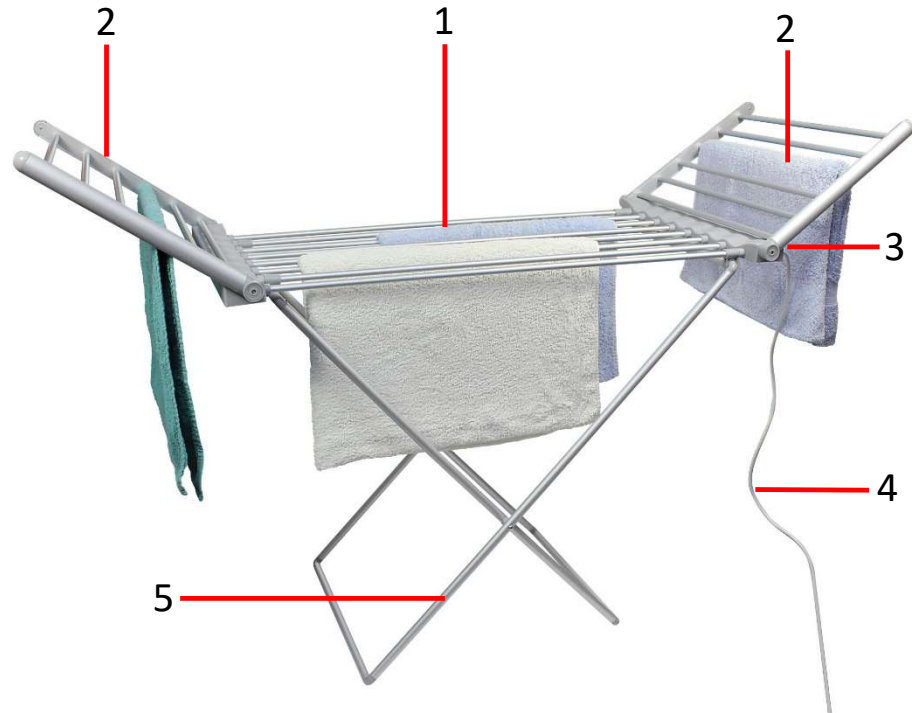
Ensure all parts are present - see **Description of Parts** below.

Check that there is no damage to the mains cable or product.

**WARNING!** Ensure that the **Mains Cable** (4) does not get trapped in the ailer whilst unfolding or folding it closed for storage.

**Description of Parts**

1. Ailer Main Body
2. Ailer Wings (x2)
3. On/Off Switch
4. Power Cable
5. X-Frame Stand

**Assembling your Heated Airing**

1. Slide the non-fixed end of the **X-Frame Stand** (5) to the opposite end of the **Ailer Main Body** (1) in the direction of the arrow as shown below:



2. Unfold the **Airer Wings** (2) as shown above.

### **Operating Instructions**

Place the airer on a solid, level surface before switching on.  
Plug the **Power Cable** (4) into a suitable socket outlet.



The **On/Off Switch** (3) is positioned on the end of the airer



To switch the airer on press **On/Off Switch** (3) to the **ON (I)** position, the switch will illuminate. Press the switch to the **OFF (O)** position to switch the airer off.

After a short time, the Heated Airer will reach its operating temperature.

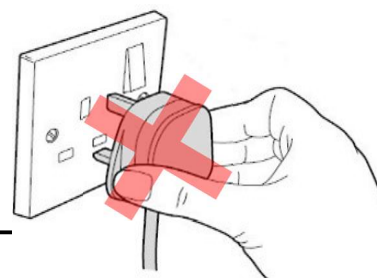
Hang the clothes evenly on the airer ensuring that it is not overloaded.



To increase the drying efficiency, hang the supplied Cover over the airer as shown left.

### **Care and Use of Your Heated Airer**

- Always disconnect the Airer from the mains power supply and allow to cool before cleaning.
- Clean outside of the Airer with a clean damp cloth. Never clean with harsh or abrasive cleaners.



- Do not submerge any part of Aired in water or any other liquids.

### **Technical Specification**

Model Number	HEA1905
Rated Voltage	220-240V~ 50/60Hz
Rated Power	230W
IP Rating	IPX1
Protection Class	I (This appliance must be earthed)
Maximum Load	15kg
Dimensions	94cm (H) x 146cm (W) x 54cm (D)
Power consumption of equipment in Off Mode shall not exceed 0,30W	0,00W

### **Non-Rewireable Mains Plug**

If your appliance is supplied with a non-rewireable plug fitted to the mains lead and should the fuse needed replacing, you must use an ASTA approved one (conforming to BS 1362 of the same rating). Never use a plug with the fuse cover missing. If in doubt, consult a qualified electrician.

If you need to remove the plug-**DISCONNECT FROM THE MAINS**- and then cut it off the mains lead and immediately dispose of it safely. Never attempt to reuse the plug or insert it into a socket outlet as there is a danger of electric shock.

### **Recycling Information**

#### **Disposal of the Packaging**

Dispose of paper and cardboard in appropriate paper re-cycling facilities.

Dispose of recyclable plastics in appropriate plastic re-cycling facilities.

Dispose of non-recyclable plastics in the appropriate plastics collection service.

#### **Disposal of the Product**



You should now recycle your waste electrical goods and in doing so help the environment. This symbol means waste electrical products at the end of their useful life should not be disposed of with normal household waste and not sent to landfill. Please ensure it is taken to a suitable facility for disposal. Check with your Local Authority or retailer for recycling advice or visit [www.recycle-more.co.uk](http://www.recycle-more.co.uk) enter your postcode to find out your nearest recycling site.

## ErP Data

Model identifier(s): HEA1905 (YW-230)				
Item	Symbol	Value	unit	
<b>Heat output</b>				<b>Type of heat input, for electric storage local space heaters only (select one)</b>
Nominal heat output	$P_{nom}$	0,23	kW	manual heat charge control, with integrated thermostat [no]
Minimum heat output (indicative)	$P_{min}$	0,23	kW	manual heat charge control with room and/or outdoor temperature feedback [no]
Maximum continuous heat output	$P_{max,c}$	0,23	kW	electronic heat charge control with room and/or outdoor temperature feedback [no]
<b>Power consumption</b>				fan assisted heat output [no]
In off mode	$P_o$	0	W	<b>Type of heat output/room temperature control (select one)</b>
In standby mode	$P_{sm}$	-	W	single stage heat output and no room temperature control [no]
In idle mode	$P_{idle}$	-	W	Two or more manual stages, no room temperature control [no]
In network standby	$P_{nom}$	-	W	with mechanic thermostat room temperature control [yes]
Standby mode with display of information or status			[no]	with electronic room temperature control [no]
				electronic room temperature control plus day timer [no]
				electronic room temperature control plus week timer [no]
				<b>Other control options (multiple selections possible)</b>
				room temperature control, with presence detection [no]
				room temperature control, with open window detection [no]
				with distance control option [no]
				with adaptive start control [no]
				with working time limitation [no]
				with black bulb sensor [no]
				Self-learning functionality [no]
				Control accuracy [no]

### ***Customer Support***

Should you require any product information, replacement parts or accessories, please contact our customer care team on 0161 831 7879 (8.30am-4.30pm Monday to Thursday, 8.00am-4.00pm Friday) and select option 3 or by contacting us via email:

[help@daewooelectricals.com](mailto:help@daewooelectricals.com).

- Replacement parts and accessories are guaranteed for 1 year from the date of purchase.
- It is important to note that your warranty becomes invalid should non Daewoo parts or accessories be used with this appliance.

Notes





# DAEWOO®

## WARRANTY

*Thank you for purchasing your Daewoo product.*

*As part of our commitment to quality, we are offering you an extra 2 years warranty in addition to your 1 year guarantee*

Your Daewoo product is guaranteed for 1 year from the date of original purchase, with proof of purchase or receipt. If any defect should occur due to faulty workmanship or material, your faulty product should be returned to the place of purchase, replacement or refund is at the discretion of the retailer.

The guarantee is subject to the following provisions:

- The product must be correctly installed and operated in accordance with the requirements contained in the instruction manual.
- The product must be used solely for domestic purposes.
- It does not cover general wear and tear, damage, misuse or any consumable parts.
- The guarantee will be rendered invalid if the product is re-sold or has been damaged through inexpert repair.
- The guarantee is only valid within the UK and Eire.

Your standard 1 year guarantee will only be extended to the maximum available for your individual product upon registration. (Note: products must be registered individually and covers the main body and housing). If you do not register your product within 28 days of the original purchase date, your product will only be guaranteed for 1 year.

*To validate your extended 2 year warranty\* please register your purchase online within 28 days of the original purchase date by registering at:*

<https://help.daewooelectricals.com>

or

[Contact Us \(daewooelectricals.com\)](mailto:Contact Us (daewooelectricals.com))

\*Your extended warranty is only valid with proof of purchase receipt and subject to the conditions outlined above.

Daewoo is a registered trademark.  
Produced and imported under licence by  
Eurosonic Group Limited  
Brightgate House  
1 Brightgate Way  
Manchester M32 0TB UK

EU Rep: EuroSonic Magppie (ESM) Ltd. Ireland D05 X006  
[www.esgltd.com](http://www.esgltd.com)