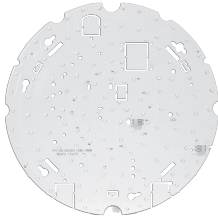


## Universal gear tray - Installation Instructions



### Universal gear tray - Standard/CCT/Variable wattage & CCT

FHBL260-GT-RND/  
FHBL260-CCT-GT-RND/  
FHBL260-VW-CCT-GT-RND

### Pre-Installation Notes

This product must be installed by a qualified electrician and wired in accordance with the latest edition of the IEE Electrical Regulations.

Make sure that the 'Incoming Mains Supply' is switched off before working on this luminaire.

Information regarding Part Number, Description, Voltage, Frequency, IP rating and Lumens is shown on the label affixed to the box containing the luminaire.

High voltage insulation test equipment "**Must Not**" be used on luminaires.

The product is suitable for use within ambient temperature ranges of -20°C to +40°C only.

It is the responsibility of the installer to ensure correct installation.

Fern-Howard do not accept any loss or damage to the product, private property and/or persons due to inadequate or incorrect installation.

Fern-Howard reserve the right to alter the specifications and/or improve products without prior notice.

### Technical Data

Specific data sheets can be downloaded from our website [www.fernhoward.com](http://www.fernhoward.com)

The light source contained in luminaire shall only be replaced by the manufacturer or his service agent or a similar qualified person.

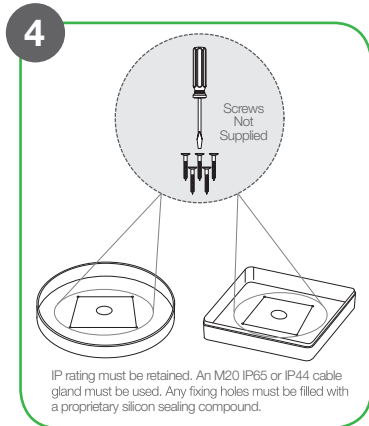
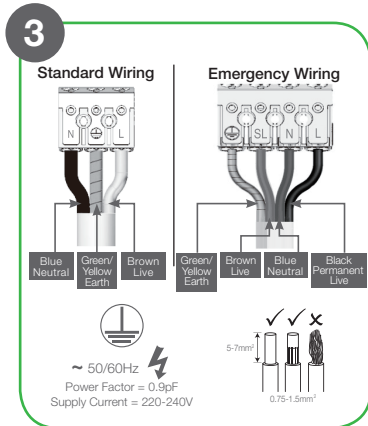
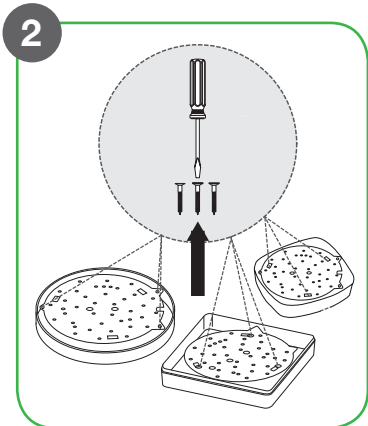
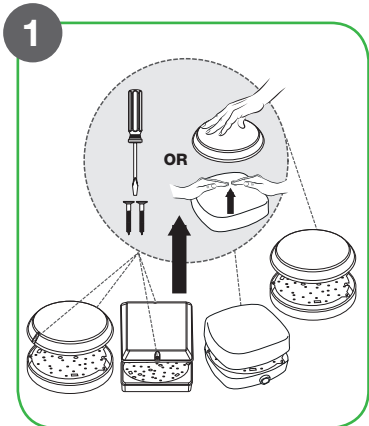
### Performance and Warranty

This product is warranted for 36 months from the date of installation, provided that the installation is carried out within two months of purchase, subject to the following conditions:

- This warranty will only be valid if the product have remained unmodified and used as per this instruction leaflet and our literature.
- Fern-Howard Ltd. shall not be liable for any consequential loss or damage caused directly or indirectly by any defective or otherwise.
- Battery packs are guaranteed for 36 months but are expected to have a life of at least four years if used within the specified temperature limits and tested in accordance with the standards in our literature.

Made in Vietnam

FHLP0022 | ISSUE 1 | APR2023



**5**

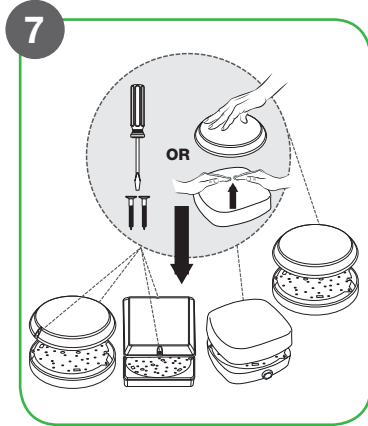
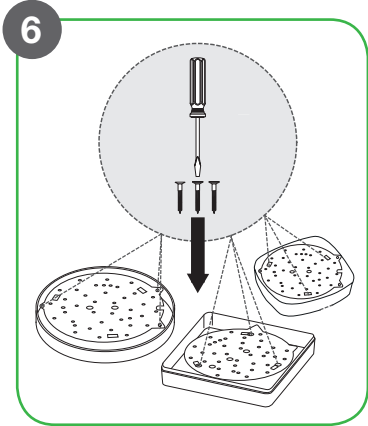
Colour temperature setting instructions			
Colour temp.(CCT)	2700K	4000K	6500K
DIP switch settings			

Wattage setting instructions(Standard/EM)				
Wattage	14W	15W	17W	19W
DIP switch settings				

Wattage setting instructions(MS/CF,EM+MS/CF)				
Wattage	14W	15W	17W	19W
DIP switch settings				

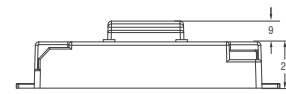
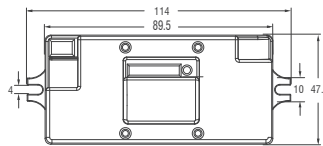
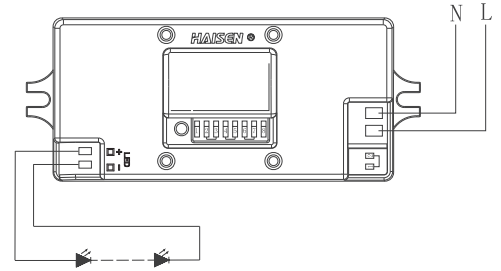


How to fit Fern Howard Universal gear tray in a non-FH branded bulkheads?

Sacr or click on the QR code to watch the video!

# FHC4293

Microwave Motion Sensor with Corridor Function & Photocell



Unit:mm

## Standards & Features



On/off control



Stand-by period



Detection area



Stand-by dimming level



Hold time



Current gear setting



Daylight sensor

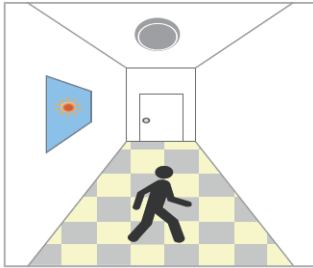


warranty  
**3**  
years

## Technical data

Input voltage	220-240 VAC 50/60Hz
Input current	0.08-0.14A Max
Input power	20W Max
Detection area	50%/100%
Hold time	5s /90s /5min /10min
Daylight threshold	2lux /10Lux /50Lux /Disable
Stand-by period	0s /10s /10min /+ ∞
Stand-by dimming level	10%/30%
Microwave frequency	5.8GHz±75MHz
Microwave power	<0.3mW
Detection angle	30°-150°
Mounting height	Max.6m(ceiling mounted) Max.3m(wall mounted)
Detection range	Max.ø14m(ceiling mounted) Max.10m(wall mounted)
Output LED current	0.3A/0.35A/0.45A/0.5A
Output LED voltage	24-42V/24-42V/24-42V/24-40V
Output LED power	8-15W/10-16W/12.5-18W/14-18W
Empty load voltage	< 55V
Power factor	>0.9
Efficiency	85% (Max.)
Operating temperature	-20°C~+50°C Tc: 80°C
Abnormal protection	SCP:Auto recovery,OVP,OCP,OTP
EMC standard	EN55015
Safety standard	EN61347-1 EN61347-2-13 EN60598-1
IP rating	IP20

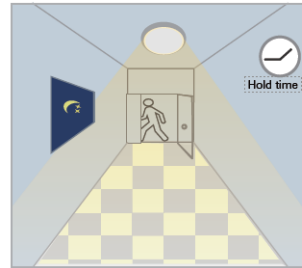
## Application Function Demo - Microwave motion sensor / Corridor function / Photocell



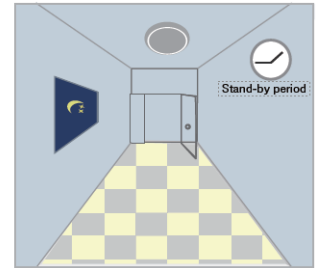
With sufficient daylight, even when motion detected, light remains OFF. **Please note for the daylight sensor to work the stand-by period must not be set to infinite!**



With insufficient daylight, when motion detected, light ON.

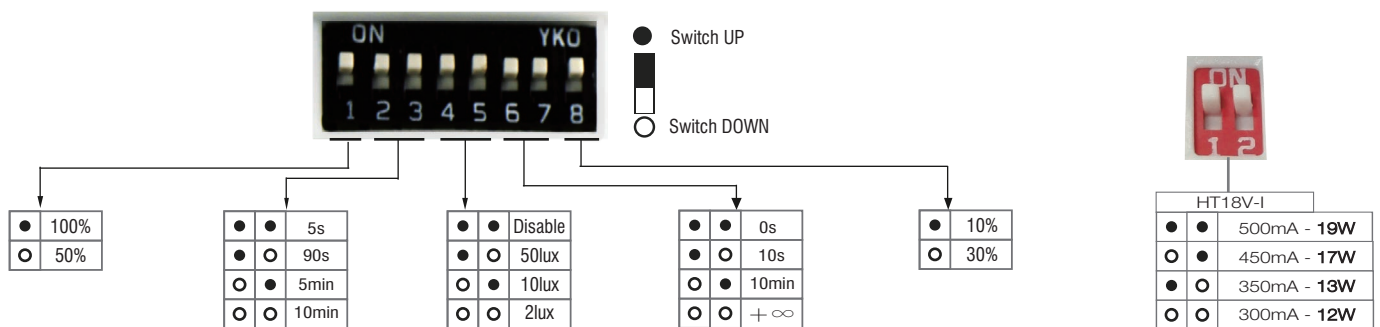


After last detection, the light will be dimmed down to the stand-by dimming level (10% or 30%) after hold-time.



After the stand-by period, light OFF.

## Settings



### Detection area

Detection area means detection coverage. It can be adjusted by combining DIP switches for specific application.

### Hold-time

Hold-time means the time period the light will be ON after the last detection.

### Daylight threshold

Daylight sensor prioritizes motion sensor. Set threshold for specific needs. If Disable, only motion sensor works.

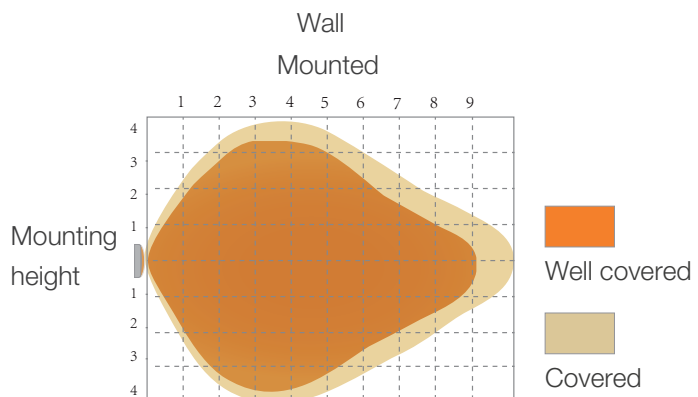
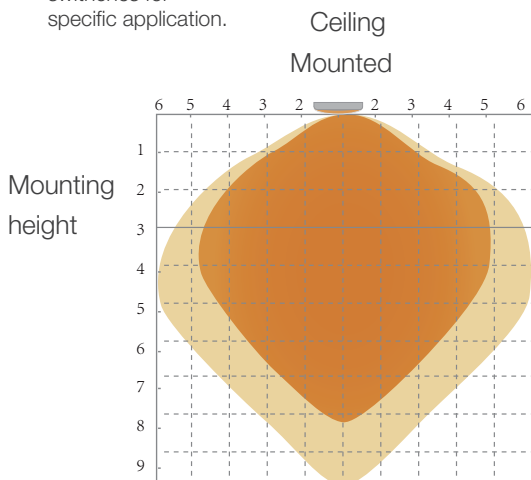
### Stand-by period

This is the time period the light keeps dimming down after the last detection. **IMPORTANT! Infinite mode will disable the daylight sensor!**

### Stand-by dimming level

This is the dimming level the light keeps during stand-by period.

### Current selection



Luminaires are manufactured and tested in accordance with BS EN60598. Incorporated control gear and components comply with BS/VDE standards. Luminaires are tested in accordance with IES LM-79-08.