




IL3532

LOLA 3LT SEMI FLUSH FITTING INSTALLATION INSTRUCTIONS


These instructions are provided for your safety.

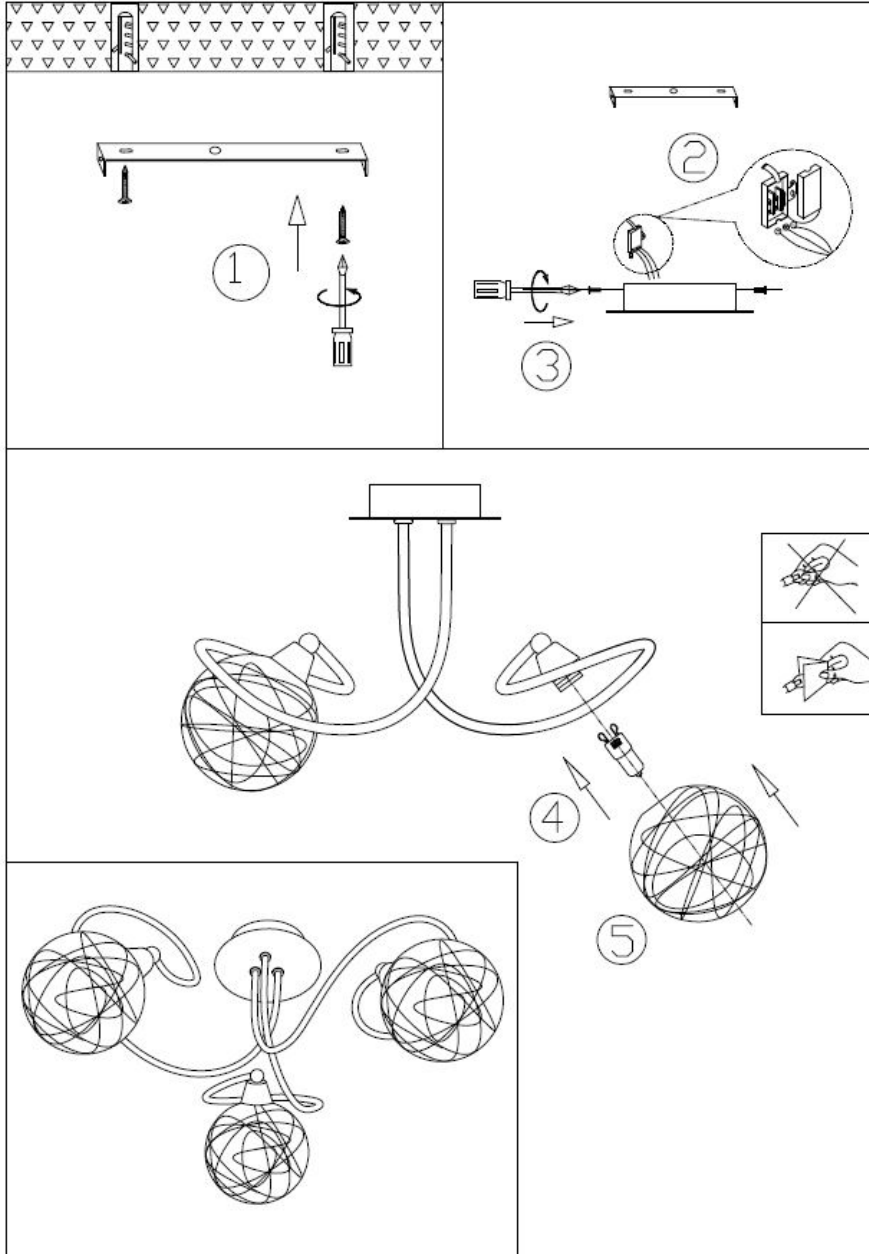
Please read carefully before commencing work and retain for future reference.

SAFETY INFORMATION

- * If you are in any doubt consult a person competent to give advice on the installation of electrical equipment.
- * This fitting should be fitted in accordance with IEE Wiring Regulations and relevant Building Regulations
- * To prevent electrocution switch off at the mains supply before installing or maintaining this fitting. Ensure other persons cannot restore the electricity supply without your knowledge.
- * To avoid damage to concealed wiring during installation, establish the direction of the supply cable before drilling fixing holes.
- * This fitting is Class I = $\frac{1}{\equiv}$ and should be fitted to a lighting supply (with earth) protected by a 5 amp fuse or equivalent circuit breaker.
- * Always be sure to use the correct type and wattage of bulbs as indicated on the fitting. Never exceed the wattage stated.
- * When changing the bulb, always switch off at the mains and allow the old bulb to cool down before handling. Dispose of used bulbs carefully.
- * This fitting is designed for use with self-shielded tungsten halogen lamps only = 

INSTALLATION

1. Ensure the house electricity supply is off at the fuse board.
2. Before removing the existing fitting, carefully note the position of each set of cables. If there are loop in cables that are not connected to the light these must be terminated in a separate terminal block not connected to the fitting.
3. Remove mounting bracket from ceiling cup by loosening the retaining screws and keep in a safe place for use later.
4. Using mounting bracket as a template, mark and then drill the fixing holes in the ceiling. (Ensure the holes are drilled into a joist or other suitable mounting.)
5. Attach the mounting bracket onto the ceiling with suitable fixings. **Take care not to damage wiring.**
6. Use a screwdriver to lever open the connector block housing and feed supply cable through the rubber sleeve. Whilst supporting the weight of the fitting, make electrical connections as follows:
 - Connect the supply live (normally brown or red) to fitting live (marked “L”) on the terminal block.
 - Connect the supply neutral (normally blue or black) to fitting neutral (marked “N”) on the terminal block.
 - Connect the earth (normally green/yellow or unsheathed) to terminal block marked ‘ $\frac{1}{\equiv}$ ’ on the fitting.
 - Ensure electrical connections are tight and no loose strands of wire are left out of the connector block.Ensure electrical connections are tight and no loose strands of wire are left out of the terminal block. Ensure terminals and rubber sleeve is correctly seated then close connector block housing by snapping together.
7. Fit any excess wires into ceiling void if required, offer the ceiling cup onto the mounting bracket until the fixing holes are aligned then secure ceiling cup into position with screws removed earlier. **Take care not to trap any wires in the process.**
8. **Fit the bulb:** type and wattage as indicated on the fitting. **The wattage indicated must not be exceeded.**
If using tungsten halogen lamps =  these must be self-shielding. Take care not to touch the capsule directly with fingers as this will leave a residue of grease on the glass surface. This will reduce the life of the capsule.
9. Fit the shades by attaching each one over the top of the lamp holder sections and screwing into place. Take care not to overtighten as this may cause damage to the fitting.
10. Switch on the electricity supply at the fuse board.



GENERAL INFORMATION

This fitting is designed for internal use only and must be fitted to a **DRY SURFACE** as any dampness in plaster or paint can damage the finish. **Do not use polish or abrasive cleaner - just a soft dry cloth.**