



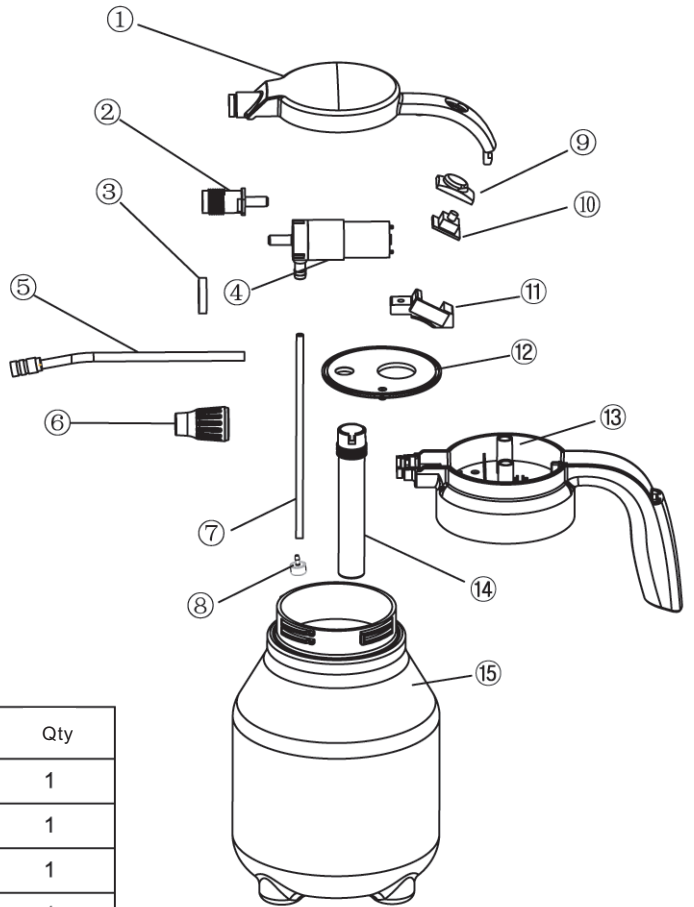
2.0L DRY BATTERY SPRAYER CT5390



Note: For Your Safety, please read and understand this manual before using it for future reference

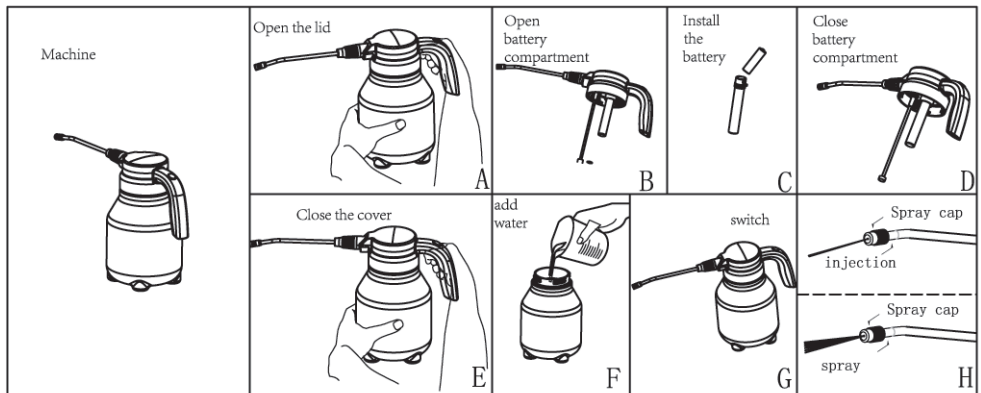
Cannon Tools Limited

Address: 20 Station Road, Rowley Regis, West Midlands, B65 0JU.U.K.



| No. | Description | Qty |
|-----|-------------------------|-----|
| 1 | Cover | 1 |
| 2 | Thread mouth | 1 |
| 3 | Circle | 1 |
| 4 | Water pump | 1 |
| 5 | Squirt rod | 1 |
| 6 | Boom nut | 1 |
| 7 | Straw | 1 |
| 8 | Filter element | 1 |
| 9 | Switch waterproof cover | 1 |
| 10 | Switch button | 1 |
| 11 | Support | 1 |
| 12 | Barrel seal | 1 |
| 13 | Smoking pipe | 1 |
| 14 | Battery compartment | 1 |
| 15 | Liquid barrel | 1 |

Assembly guidelines:



Assembly guidelines:

1. Open the cover counterclockwise according to Figure A;
2. Open the battery compartment cover according to Figure B;
3. Insert the battery according to Figure C;
4. Close the battery compartment according to Figure D;
5. Close the cover clockwise according to Figure E;
6. Add water according to Figure F;
7. Turn on the switch according to Figure G;
8. Turn the nozzle according to Figure H to spray water or mist.

Safety instructions and protective measures for batteries

1. In order to avoid accidents, when replacing batteries, replace all batteries with new batteries of the same brand and the same model to avoid mixing old and new batteries.
2. The battery should be correctly inserted according to the polarity sign marked on the battery and the device. Improperly installed equipment may be short-circuited or charged, causing the temperature of the battery to rise rapidly, resulting in danger.
3. Do not charge non-rechargeable batteries.
4. Remove the exhausted batteries from the equipment in time and dispose of them properly.
5. Do not heat the battery, do not disassemble the battery without permission.
6. Use the battery within the warranty period of the battery.

caveat:

It is forbidden to store the battery in water, please store it in a dry environment when not in use;

It is forbidden to put the battery close to heat sources, such as open flames,

heaters, etc .;

It is forbidden to throw batteries into fire or heated containers;

Prohibition of reverse connection of positive and negative poles

It is forbidden to use metal to connect the battery, which directly causes the battery to short circuit;

It is forbidden to knock, throw or step on the battery;

It is forbidden to use the battery near strong electrostatic field and magnetic field;

Product information / technical data:

Voltage: DC 3V

Current: 0.8A

Power supply: 2 x AA Battery(not included).

Max. flow: 0.3L/min

Max. Pressure: 1.8Bar

Product weight: 0.45kg

Product size: 40 x 14.5 x 24cm

EQUIPMENT MAINTENANCE:

1. If the battery is low, replace the battery or charge it.
2. Please clean the equipment with clean water for a few minutes after use.
3. Please place the equipment in a ventilated and dry environment

Common faults and troubleshooting :

| Questions | cause | solution |
|----------------------------|---|---|
| Unable to start | 1. The switch is damaged 2. The battery is dead 3. The battery is installed incorrectly | 1. Replace Switch 2. Replace the battery 3. Install the battery according to the label. |
| Can't get out of the water | Straw blocked | Open the watering can, take out the filter element and clean it. |

Safety Guidelines

1. Take appropriate safety measures to ensure that children cannot reach
2. If you need to use in the breeze, please spray downwind, the sprayed liquid should be away from you
3. Do not aim the spray at people or animals
4. Make sure all parts are intact before use, the liquid temperature should be below 40 degrees Celsius
5. Harmful if swallowed or exposed to chemical sprays, be sure to consult the chemical supplier's safety guidelines, or immediately contact the poison information center or doctor
6. Do not leave the (full or empty) watering can under the sun and leave it unattended
7. Do not spray solvents, chemicals or flammable liquids;
8. After use, please be sure to refill the water and spray for a few more minutes

to avoid the residues in the pump or other parts, causing blockage.



EC DECLARATION OF CONFORMITY

We CANNON TOOLS LTD

20 Station road, Rowley Regis, West Midlands, B65 0JU.U.K.

Declare that the following machine complies with the appropriate basic safety and health requirements of the EC Directive based on its design and type, as brought into circulation by us.

In case of alteration of the machine, not agreed upon by us, this declaration will lose its validity.

Product description: 2.0L DRY BATTERY SPRAYER

Model: CT5390

Applicable EC Directives:

EC Directive of Electromagnetic Compatibility 2014/30/EU

Harmonized standards

EN 55014-1 , EN 55014-2

20 Station Road, Rowley Regis, West Midlands, B65 0JU.U.K.

Mr. Gurcharan Tony Singh Sanghera

Managing Director



2020-06-15

CANNON TOOLS LTD
Add: 20 station road, Rowley Regis, west midlands, B65 0JU. U.K.
Made in China