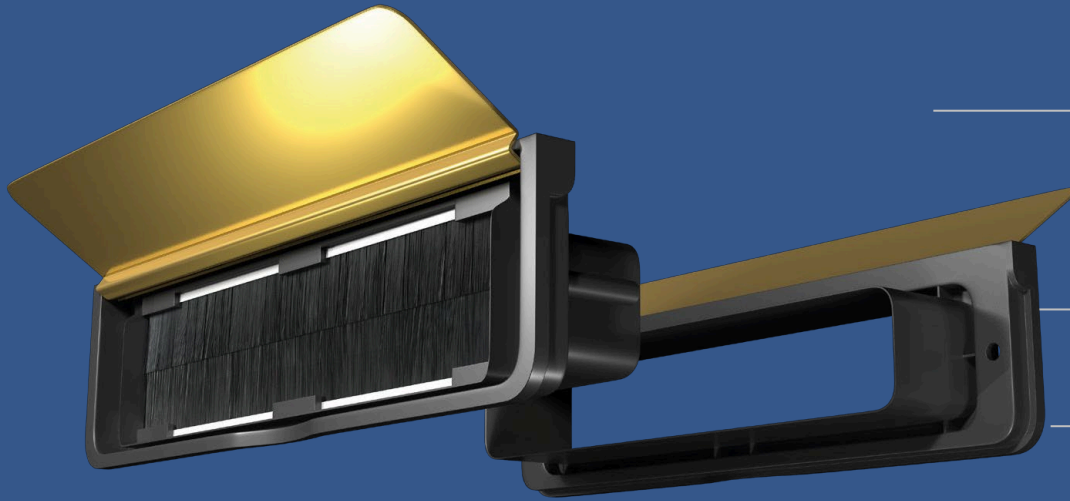


UAP Doormaster Luxe 12" Letterplate Letterbox Draught Excluder for uPVC, Composite and Wooden 20-40mm Doors



Comes in 2 sleeve thicknesses – 20-40mm for uPVC doors and 40-80mm for wooden and composite doors

Enclosed, round flap set against a shallower frame - gives a less intrusive but sleek feel to the door or frame

Modern and contemporary looking

Has a central sleeve meaning that it can fit in waste (mid) rails

- **Visual deterrent against vandals:** Outward-facing brushes make it harder to access the internal cavity, reducing the risk of fireworks or other vandalism.
- **Protects mail:** Brushes guide letters smoothly, preventing crinkled or damaged post.
- **Draught-proof:** Stops air entering through the letterplate, improving energy efficiency.
- **Durable flap design:** Each flap opens to 180°, preventing snapping and extending lifespan.
- **Ultra-flexible springs:** Can withstand thousands of openings without breaking.
- **Water-resistant:** Internal seal prevents water ingress, keeping letters dry and protecting flaps from rust or pitting.
- **Central sleeve design:** Fits into mid/waste rails without modifying CNC routing dimensions.
- **Easy installation:** Cavity hole required for the 12-inch letterplate: 258mm x 42mm.
- **Anti-vandal feature:** Trademarked outward-facing brushes prevent misuse and potential fire hazards from fireworks.

Matt finished plastic frame conceals any scratches that may be caused by screwdrivers during installation

Blind bolts to the exterior of the letterplate prevents the outer frame being unscrewed from the door externally

Ultra-flexible springs can withstand the letterbox flap opening thousands of times without breaking

Conforms to many standards and testing requirements including BS EN 13724

Distance Between Screw Holes	280mm
Letterplate Length	300mm
Letterplate Height	65mm
Frame Material	Plastic
Cavity Hole Size	258mm x 42mm