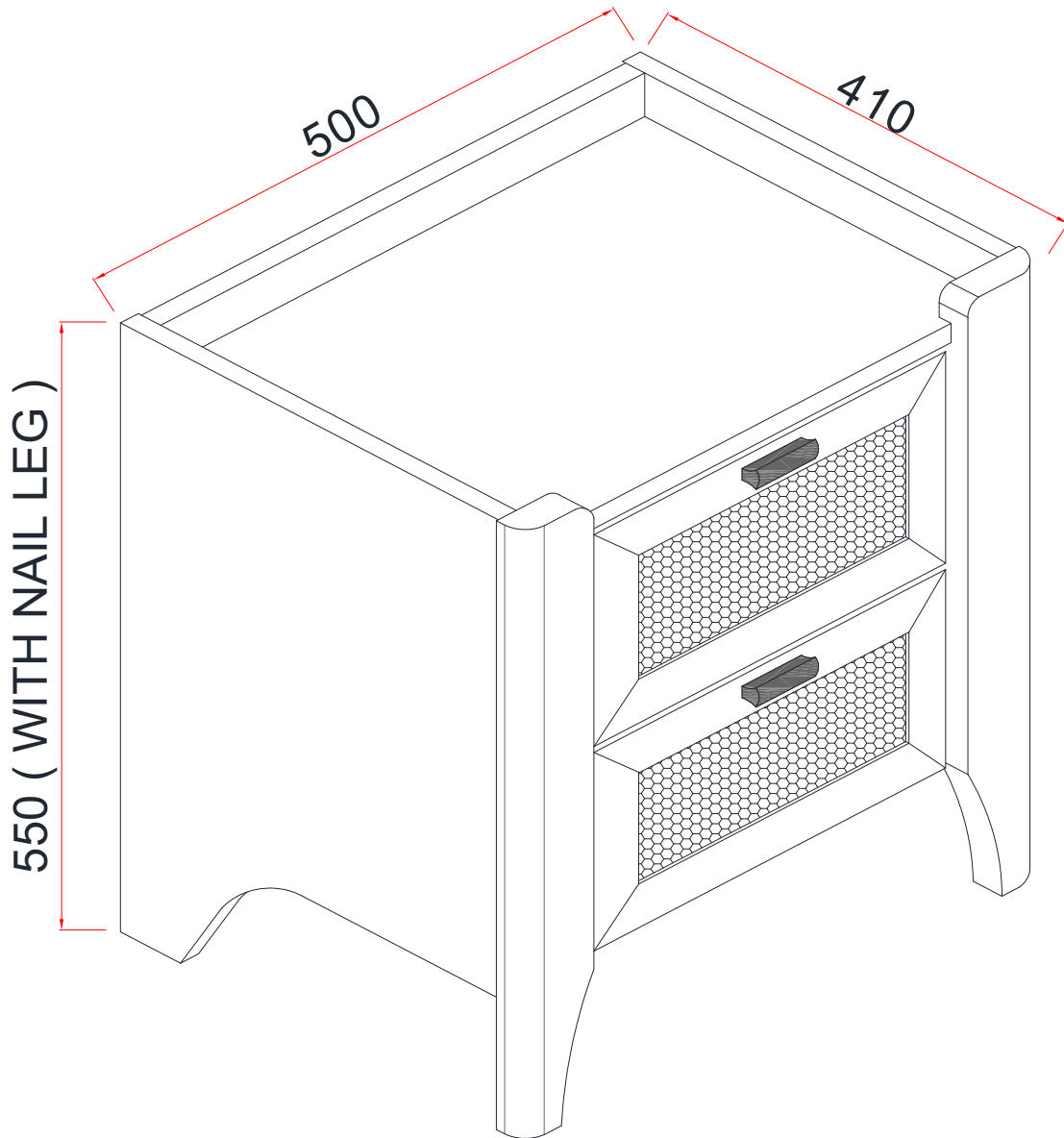



GOLBAL PROCUREMENT AND MARKETING LIMITED

ROCHESTER NIGHTSTAND

Assembly instruction- Please keep for future reference

BSDROC2DW



Dimensions	No. People	Assembly Time	OW#
Width: 55cm		35 mins (approx)	BSDROC2DW
Depth: 41cm			
Height: 50cm			

thank you

For purchasing this
GPM Limited
product

Important-Please read these instructions fully before starting assembly

If you need help or have damaged or missing parts, please email aftersales@gpmfurniture.co.uk

⚠ Safety and Care Advice

Important-Please read these instructions fully before starting assembly

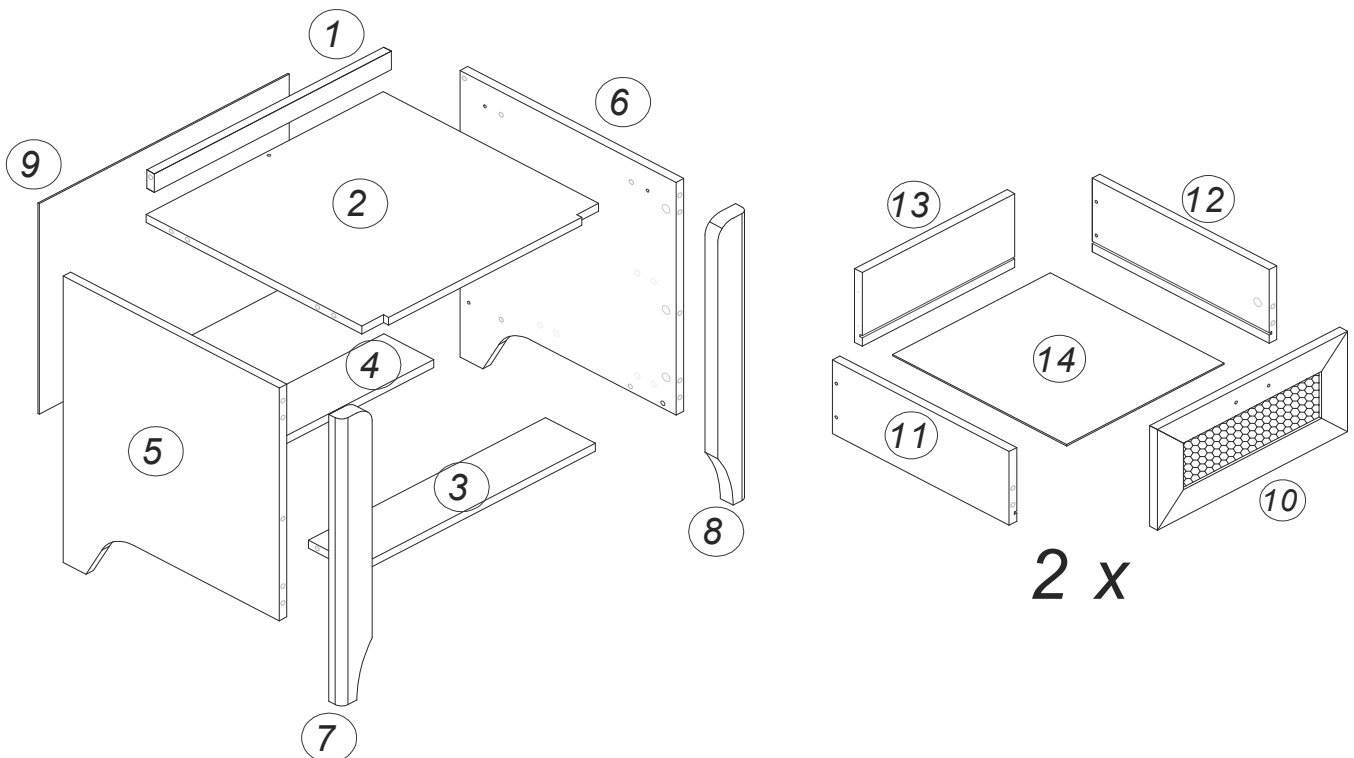
- Check you have all the components and tools listed on pages 2,3 and 4.
- Remove all fittings from the plastic bags and separate them into their groups.
- Keep children and animals away from the work area, small parts could choke if swallowed.
- Make sure you have enough space to lay out the parts before starting.
- Do not stand or put weight on the product, this could cause damage.
- Assemble the item as close to its final position (in the same room) as possible.
- Assemble on a soft, level surface to avoid damaging the unit or your floor.
- We do not recommend the use of power drill/drivers for inserting screw, as this could damage the unit. only use hand screwdrivers.
- Dispose of all packaging carefully and responsibly.



Care and Maintenance

- Only clean using a damp cloth and mild detergent, do not use bleach or abrasive cleaners.
- From time to time check that there are no loose screws on this unit.
- This product should not be discarded with household waste. Take to your local authority waste disposal centre.

If you are unhappy with the product and wish to return it, please following the retailer's return procedure






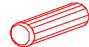
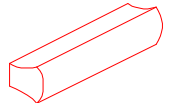





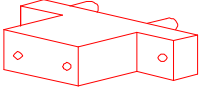




Components - Fixings

If you have damaged or missing components,
email aftersales@gpmfurniture.co.uk

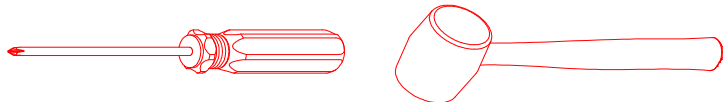
Please check that you have all the components listed below before constructing your item.

Note: The quantities below are the correct amount to complete the assembly. In some cases more fittings may be supplied than

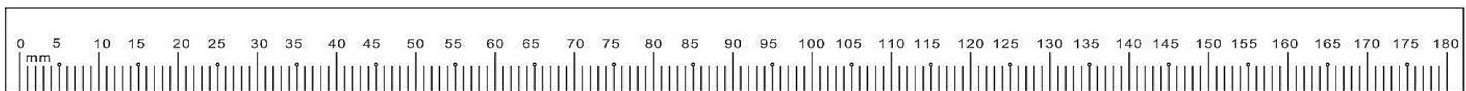
HARDWARE

(A)  MINIFIX 16MM X 18	(B)  MINICAM 16MM X 18	(C)  ALLEN KEY X 1	(D)  WOOD DOWEL 8 X 30 MM X 18	(E)  HANDLE WOOD 64mm X 2
(F)  HANDLE SCREW M4 X 25mm X 4	(G)  DRAWER SLIDE 1MM FGV-300MM X 2	(H)  CSK M4 X 38 MM X 9	(I)  CSK M3.5 X 12MM X 4	(J)  CSK M3 X 12MM X 8
(K)  PLASTIC STOPPER 55 MM X 8	(L)  CSK M3.5 X 25 MM X 8	(M)  PAN HEAD M4 X 20MM X 16	(N)  NAIL X 10	(O)  NAIL LEG 5/8 X 4

Tools Required (Not Provided)



Ruler - Use this to measure your screws (mm)



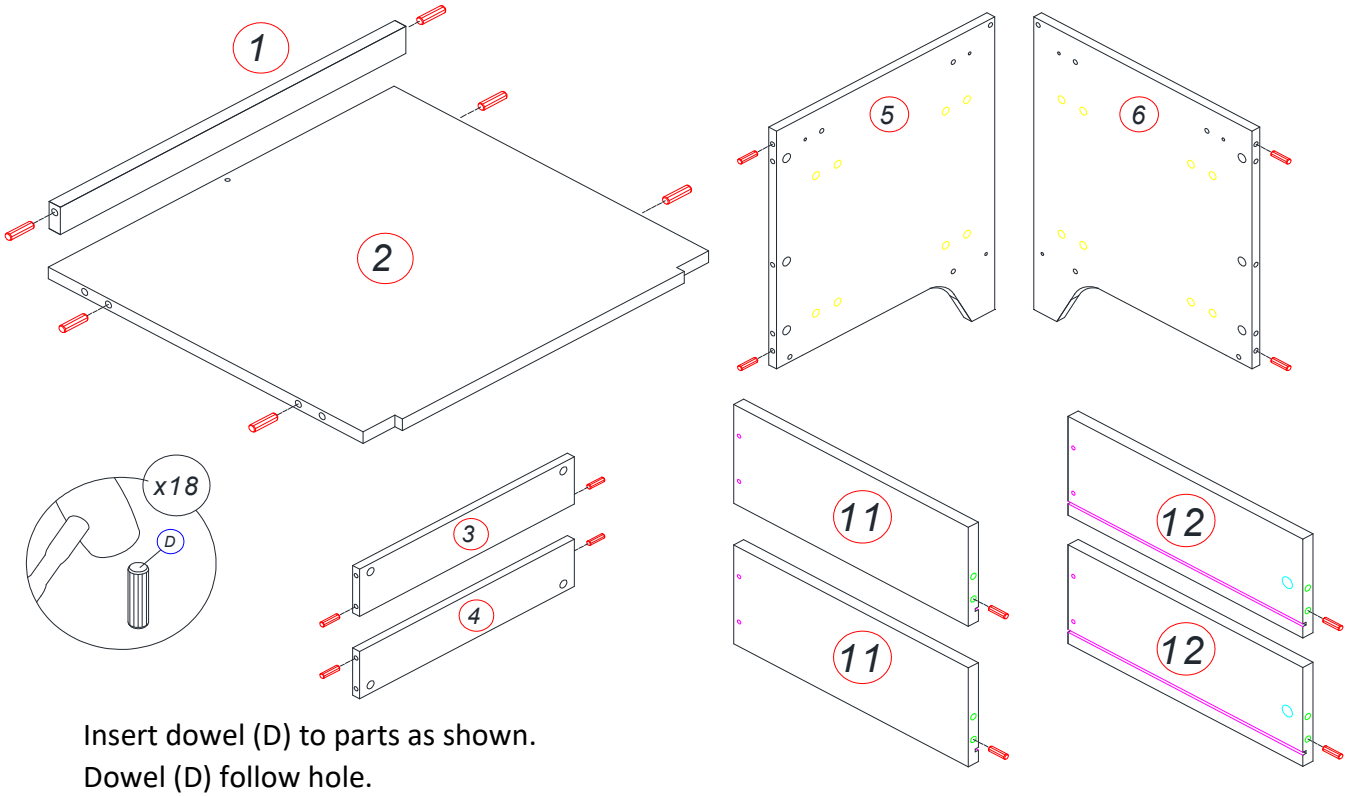
Important-Please read these instructions fully before starting assembly

If you need help or have damaged or missing parts, please email aftersales@gpmfurniture.co.uk

Assembly Instructions

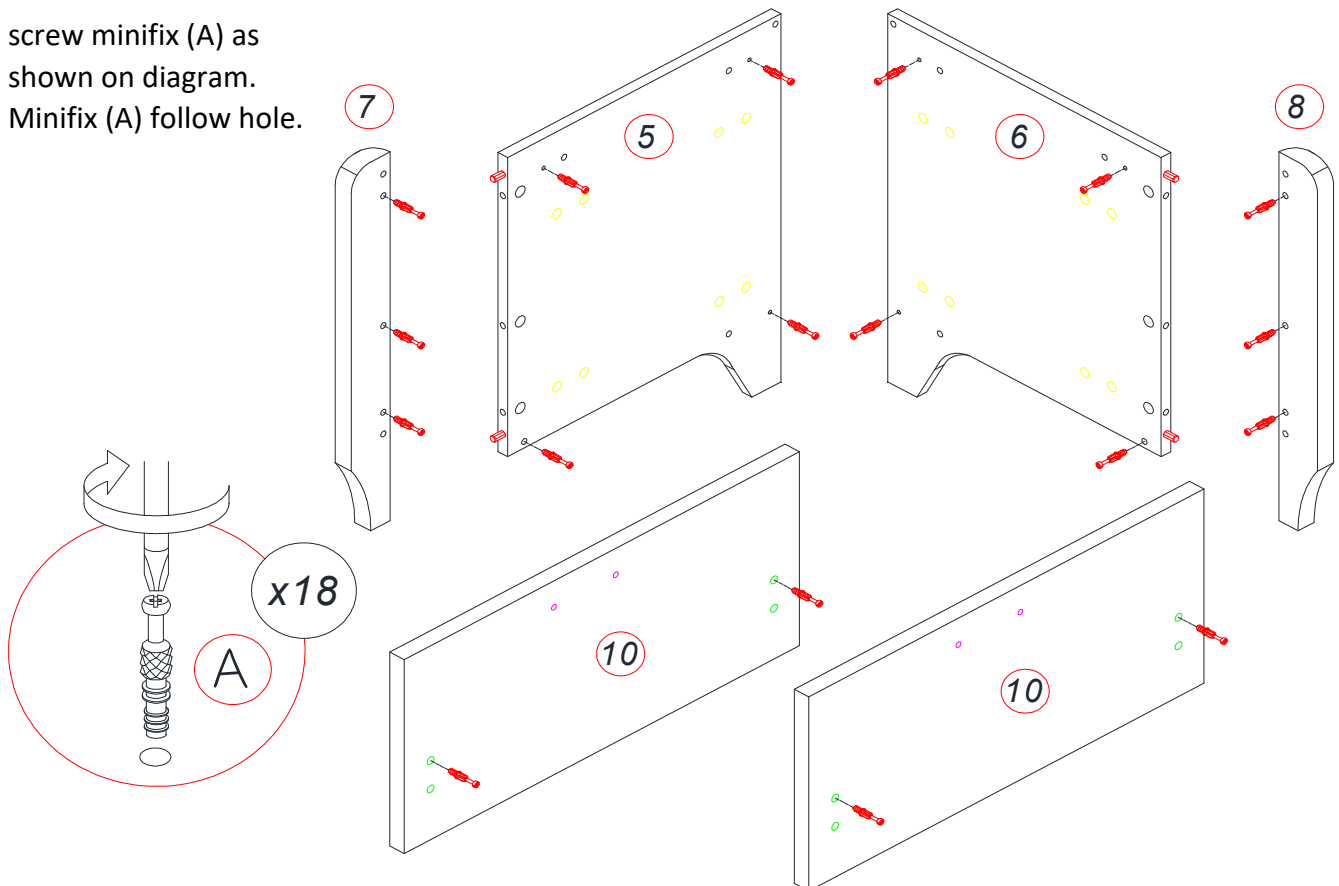
If you have damaged or missing components,
email aftersales@gpmfurniture.co.uk

Step 1

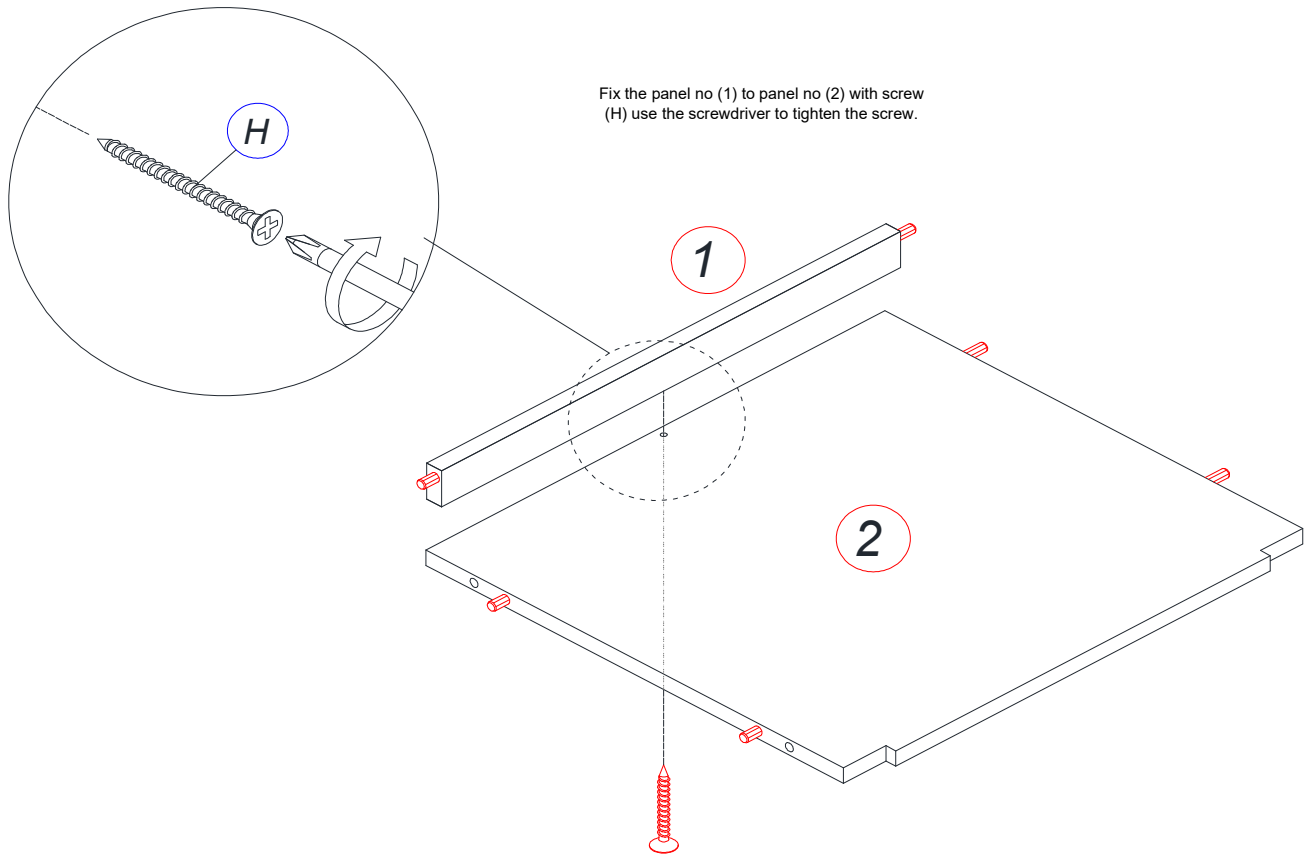


Step 2

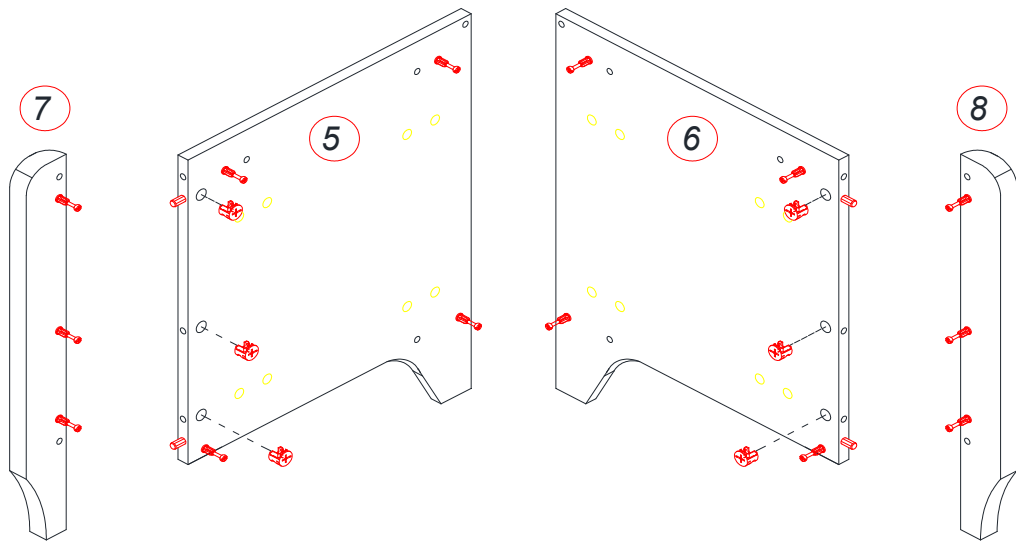
screw minifix (A) as
shown on diagram.
Minifix (A) follow hole.



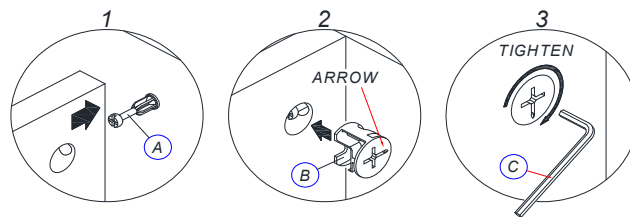
Step 3



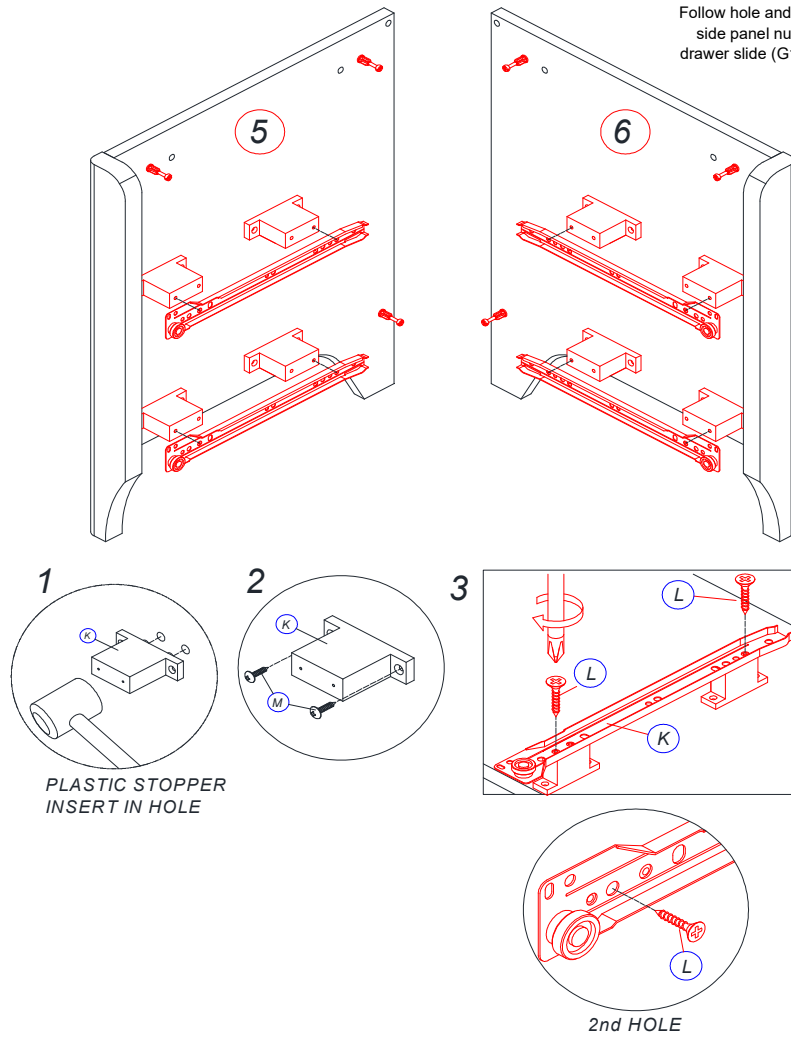
Step 4



Fix the panel no (7) to panel no (5). Tighten the Minifix with minicam (B) as shown on diagram. Repeat the previous instruction onto the panel (8&6).

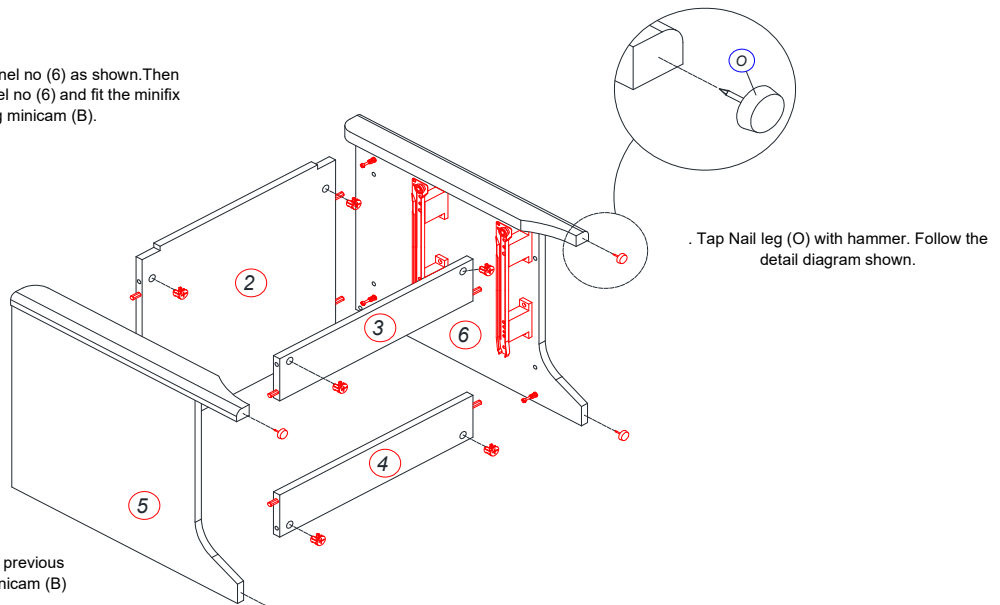


Step 5

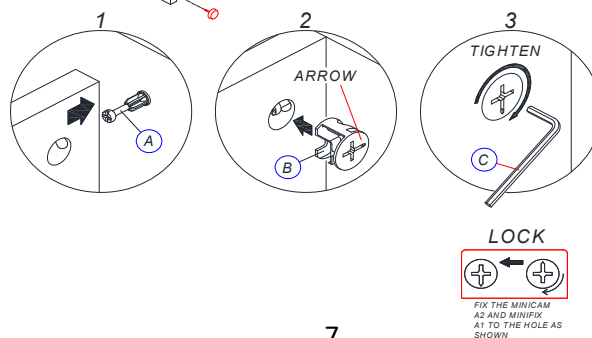


Step 6

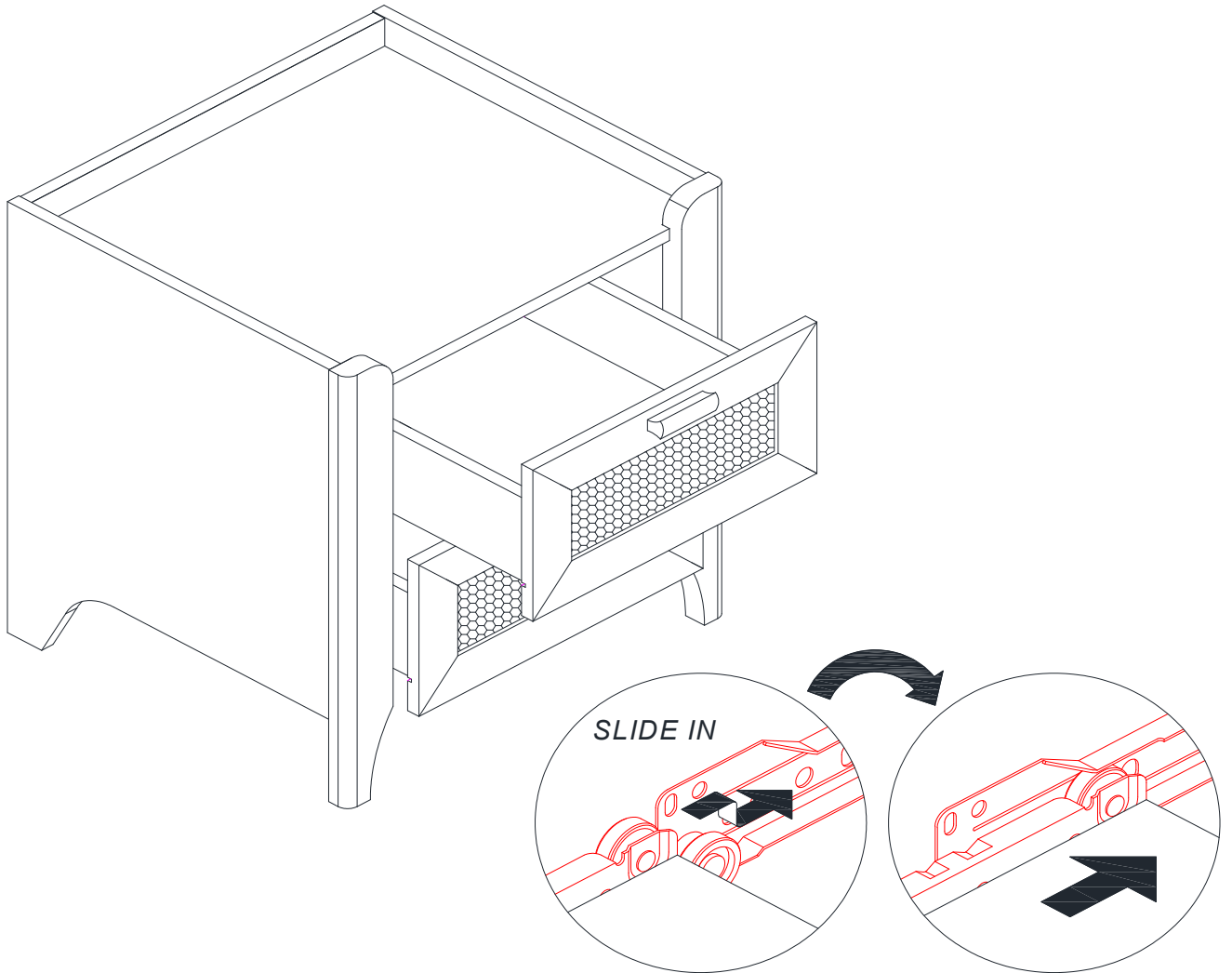
6a. Fix the panel no (3,4) to panel no (6) as shown. Then joint the panel no (2) to the panel no (6) and fit the minifix (A) then lock it using minicam (B).



6b. After that, combine the panel (5) with the previous part and fit the Minifix (A) and tighten with Minicam (B) using Allen key (C) as shown below.



Step 9



Assembly Complete