



• Indoor Wall Light H3 138 •

Long Life Lamp Company

Antique Brass Finish

Wall Light Sconce

This stylish indoors wall light comes in an antique brass finish complete with a opal globe glass shade. Due to the semi-visible light bulb, the fixture creates a fascinating display of light and glow once illuminated. Requires an E27 light bulb max 60w. Recommended bulb shape Candle, Golf Ball (G45) or T45.



Technical Specification
Please see below

- Bulb base : ES/E27
- Max Wattage : 60W
- 220-240V 50Hz AC
- LED Compatible : Yes
- Dimmer Compatible : Yes



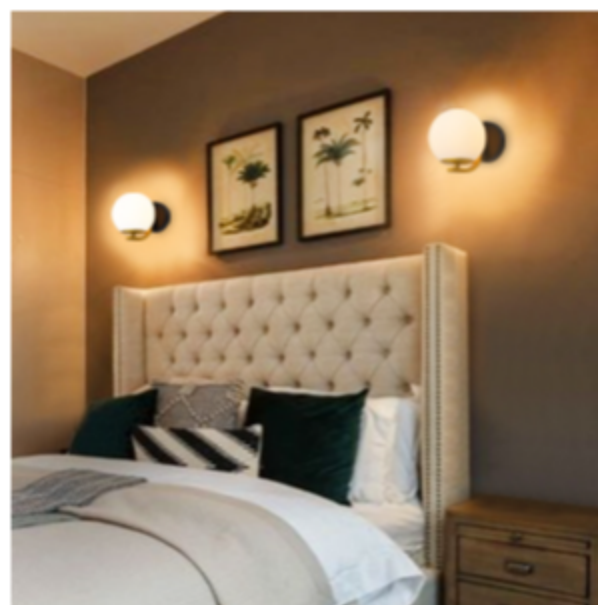
Model H3138-F

Globe Wall Lantern



Trend Fowards

Inspired by Modern lighting this 1 light wall sconce, is a very modern wall lantern. This stylish indoors wall light comes in an antique brass finish with a opal globe glass shade. The characteristics of this fitting are very trend forwards and unique. It boasts vintage and modern at the same time.



Unique

Inside the glass shade there is a E27/ES lamp holder. Due to the semi-visible light bulb, the fixture creates a fascinating display of light and glow once illuminated. We recommend using warm white light bulbs as they will truly fit well with this kind of light fitting, not cool white, but the choice is your own.



Modern Yet Vintage

The wall light blends seamlessly into a variety of different era interior styles, offering stylish lighting in the living room, dining room or hallway. The pictured light bulb is Not included. Requires an E27 light bulb max 60w. Recommended bulb shape Candle, Golf Ball (G45) or T45.