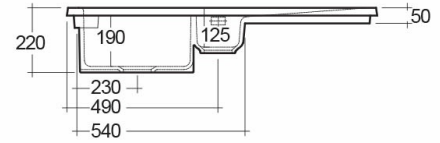
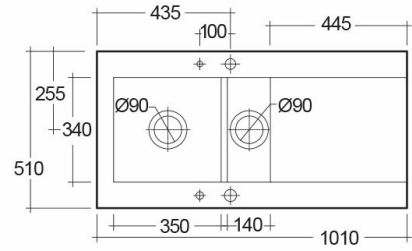


# RAK-DREAM 1 - MATT CAPPUCCINO - 514

## Drop In | Kitchen Sink

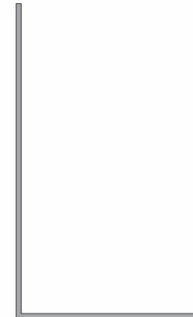
**RAK**  
CERAMICS



### Technical specifications

Dimensions:	1010 x 510 mm
Weight:	30 Kg
Color:	Beige
Vanity space:	yes
Suites:	<a href="#">Kitchen Sinks</a>

Code	Name
OC200LHSL514A	DREAM KITCHEN SINK 1 - MATT CAPPUCCINO - 514 - Left Hand Side
OC200NTSL514A	DREAM KITCHEN SINK 1 - MATT CAPPUCCINO - 514 - No Tap Hole
OC200RHSL514A	DREAM KITCHEN SINK 1 - MATT CAPPUCCINO - 514 - Right Hand Side



Dimensions: All dimensions in mm. Tolerance of vitreous china & fireclay items:  $\pm 5\%$  for below 200mm and  $\pm 3\%$  for above 200mm; for all other items tolerance  $\pm 1\%$ . Note: Due to a continuing development program to improve design and performance, the manufacturer reserves all rights to vary specifications without prior information. Please note accessories are for photographic use only.