



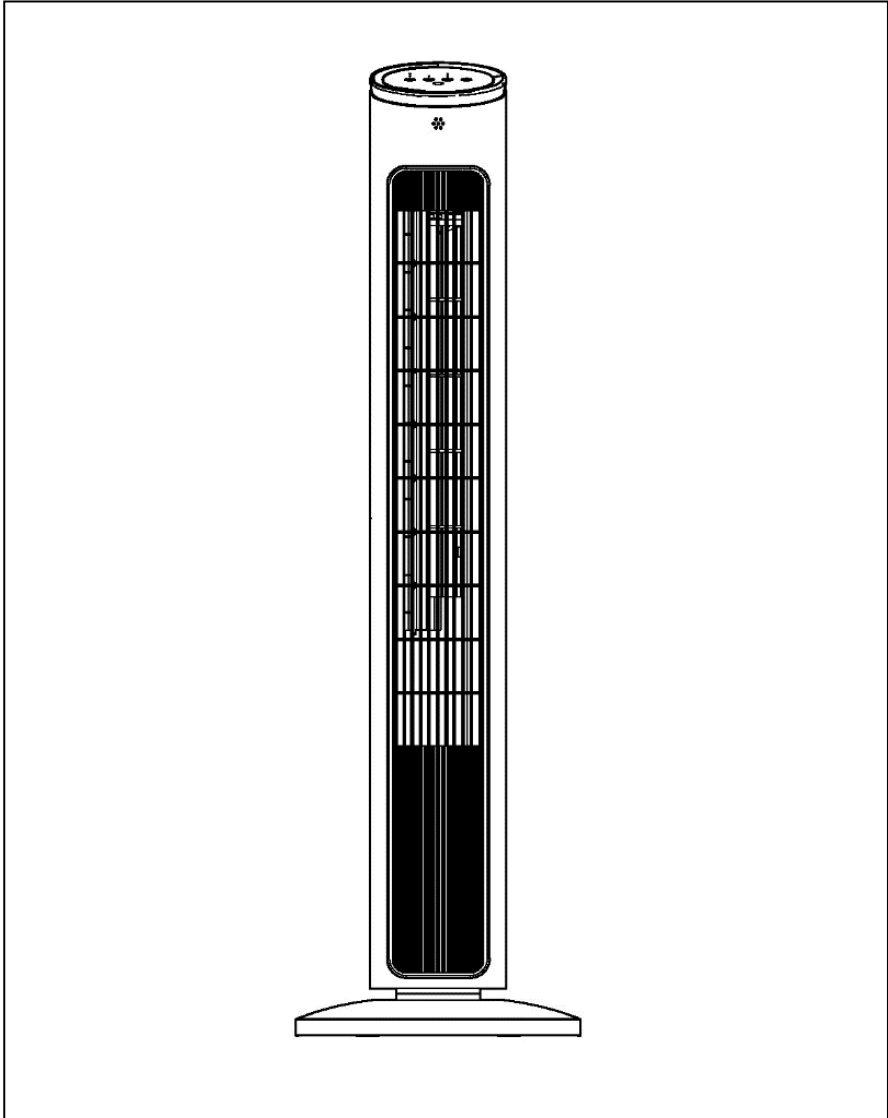
Russell Hobbs

43"

Operating Manual

TOWER FAN

RHTRW3S



GUARANTEE

At Russell Hobbs, we take all our customer feedback seriously.

Feel free to contact our Product Care Team, on **0345 209 7461** who will be more than happy to assist you.

This product is guaranteed for 12 months from the date of the original purchase. If any defect arises due to faulty materials or workmanship, the faulty product must be returned to the place of purchase.

Refund or replacement is at the discretion of the retailer.

The following conditions apply:

- The product must be returned to the retailer with the original proof of purchase.
- The product must be installed and used in accordance with the instructions contained in this instruction guide and any other instructions for use which are supplied.
- It must be used for domestic purposes only and for its intended use.
- This guarantee does not cover wear and tear, damage, misuse or consumable parts.
- This does not affect your statutory rights.

RUSSELL HOBBS CONTACT DETAILS

Website: mda.russellhobbs.com

Telephone: 0345 209 7461

Address: Product Care, Green Bank Business Park,
Hindley Green, Wigan, WN2 4AY

Note your serial number below for future reference

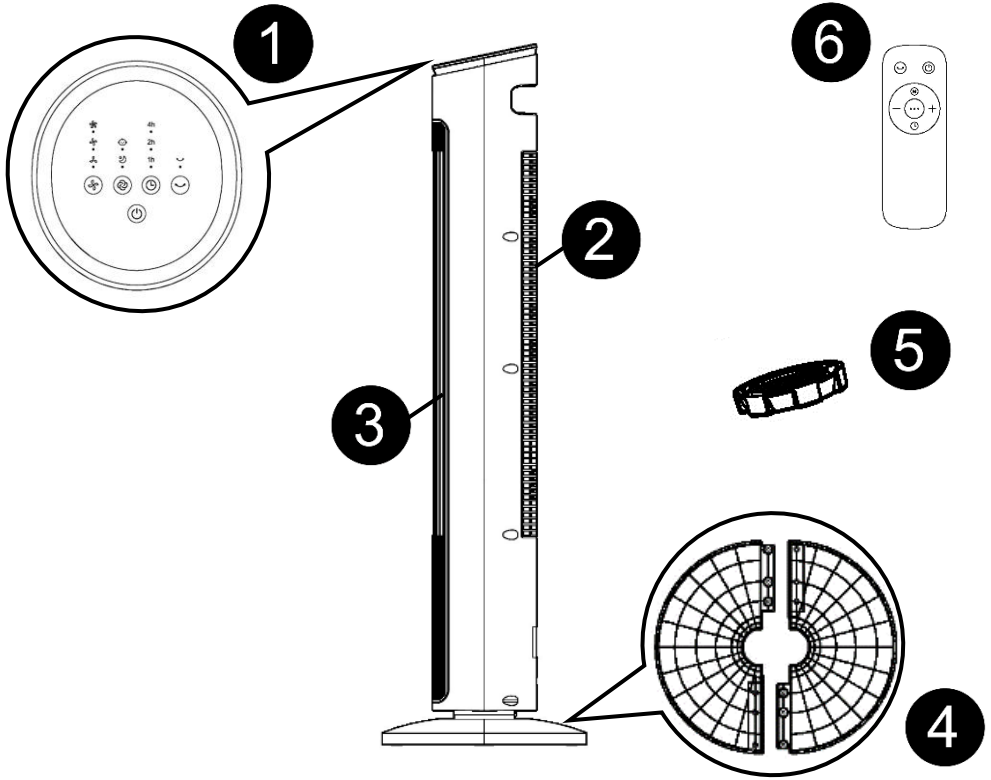


Image for illustration purposes only

IMPORTANT SAFETY INSTRUCTIONS

- It is hazardous for anyone other than a competent person to carry out any service or repair operation that involves the removal of a cover which gives protection against exposure to electrical parts.
- Do not use with a damaged cord or plug. If the supply cord is damaged, it must be replaced by the manufacturer, its service agent or similarly qualified persons in order to avoid a hazard.
- This product is intended for household use only.
- Do not use outdoors.
- This appliance can be used by children aged from 8 years and above and persons with reduced physical, sensory or mental capabilities or lack of experience and knowledge if they have been given supervision or instruction concerning use of the appliance in a safe way and understand the hazards involved. Children should not play with the appliance. Cleaning and user maintenance should not be made by children without supervision.
- Do not operate this appliance for anything other than its intended use.
- Do not immerse whole unit in water or other liquids for cleaning.
- Unplug from outlet when not in use. Do not leave unattended while plugged in.
- Do not use if it has been dropped, damaged, left outdoors or dropped into water.
- Keep the appliance away from water; do not allow it to get wet. If unit is wet, do not plug unit into wall socket or turn unit on.
- Do not handle the appliance with wet hands.
- Do not pull or carry by cord, use cord as a handle, close door on cord, pull cord around sharp corners or edges, or expose cord to heated surfaces. Do not unplug by pulling on cord.
- To protect against electrical shock do not immerse cord, plug, or appliance in water or other liquid.
- Unplug from the mains outlet when not in use, before putting on and taking off parts, and before cleaning.
- Only use the unit when fully assembled.
- Never place your fingers or other objects into any part of the appliance. Be aware that loose clothing or hair may become trapped in the appliance if improperly used.
- Before use, ensure that all of the air vents of the appliance are clear and there is no restriction of air flow.
- Caution: Appliance may disturb ashes in an open fire. Always avoid directing the appliance toward naked flames.

PARTS

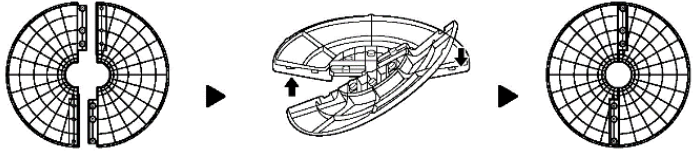


1. Control Panel
2. Air Inlet
3. Air Outlet
4. Base (Requires assembly)
5. Base Securing Nut
6. Remote

ASSEMBLY

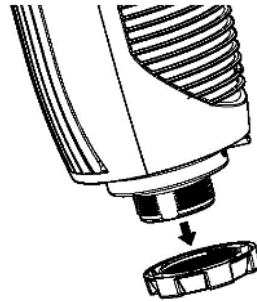
Step 1

Take the two parts which form the base and align the centres, then hold in a cross formation. Rotate one of the two pieces to align the hole and click into place.



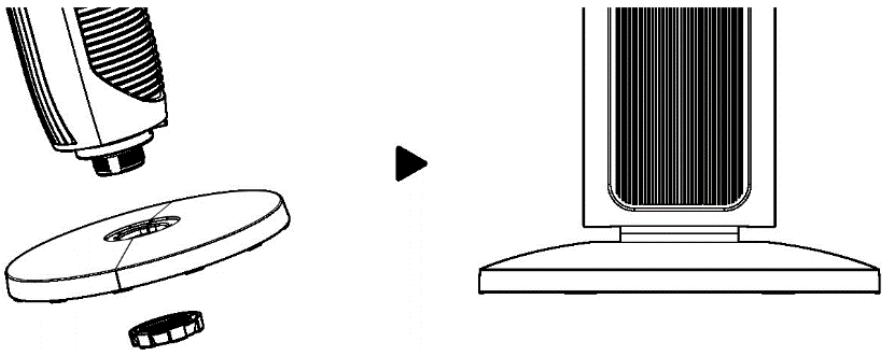
Step 2

If attached, remove the plastic securing nut from the screw fixing on the base of the fan.



Step 3

Push the base plate over the screw fixing on the base and reattach the securing nut. Tighten the nut, taking care not to over tighten.



FUNCTIONS



On/Off



Oscillation



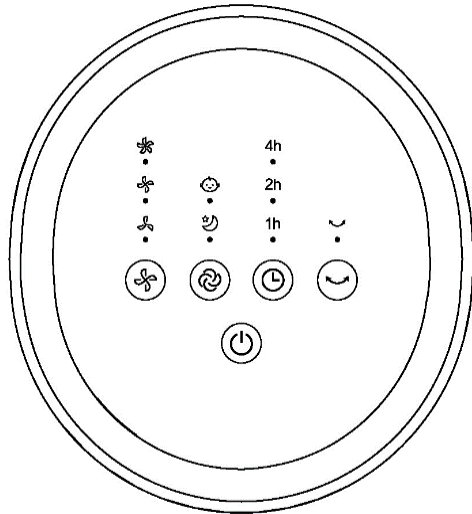
Timer



Speed Selection



Mode Selection



Oscillation

When the fan is on, press the oscillation button and the fan will begin oscillate 85° side to side

Timer (Auto Shut Off)

Your fan can be scheduled to switch off after reaching between 1-7 hours of operation.

When the fan is operating, press the timer button. Pressing the timer button again will increase the time up to 7 hours. The indicator lights will illuminate as below:

- 1 hours = 1hr indicator light
- 2 hours = 2hr indicator light
- 3 hours = 1hr + 2hr indicator lights
- 4 hours = 4hr indicator light
- 5 hours = 4hr + 1 hr indicator lights
- 6 hours = 4hr + 2hr indicator lights
- 7 hours = 4hr+ 2hr + 1hr indicator lights

FUNCTIONS

Timer (Auto Start)

Your fan can be scheduled to switch on after reaching between 1-7 hours of standby.

When the fan is in stand by mode, press the timer button. Pressing the timer button again will increase the time up to 7 hours. The indicator lights will illuminate as below:

- 1 hours = 1hr indicator light
- 2 hours = 2hr indicator light
- 3 hours = 1hr + 2hr indicator lights
- 4 hours = 4hr indicator light
- 5 hours = 4hr + 1 hr indicator lights
- 6 hours = 4hr + 2hr indicator lights
- 7 hours = 4hr+ 2hr + 1hr indicator lights

Speed Selection

When the fan is powered on, press to control the fan speed. The speed will circulate between Low (1), Medium (2), and High (3) power.

Mode Selection

When the fan is powered on, press this button to select the mode. The modes will circulate between Normal, Sleep Air and Gentle Air.

MODES

Normal Mode

This should be used for everyday operation when simple On/Off functionality is desired. All additional functions such as Speed Selection and Timer can be used.

Sleep Air

This mode gradually decreases the fan speed to the lowest setting over 30 minutes, helping you fall asleep naturally and reduces overall energy consumption. Speed selection and Auto On cannot be used.

Gentle Air

This mode imitates a natural outdoor breeze, increasing and reducing the wind power over a consistent period.

REMOTE CONTROL



On/Off



Oscillation



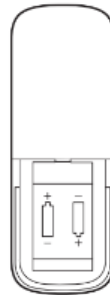
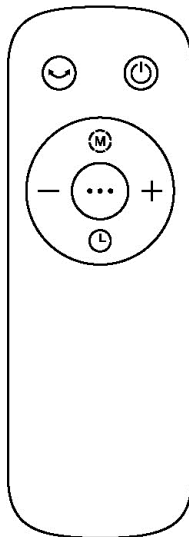
Timer



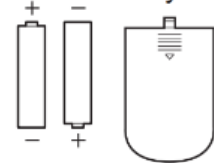
Speed Selection



Mode Selection



AAA Battery. 1.5V



Battery

NOTES

The fan doesn't switch on	<ul style="list-style-type: none">• Check the fan is plugged in• Check the socket is switched on• Check another appliance in the socket• Unplug and check for any obvious signs of damage to cord or plug• If recently used, allow to cool for 1 hour then try again
The fan is rattling	<ul style="list-style-type: none">• Check the grille is secured properly• Check all screws are securely fastened• Check there is nothing in contact with the fan
Fan will not oscillate	<ul style="list-style-type: none">• Check the oscillation switch is pressed down• Check that nothing is interfering with the fan preventing oscillation
Fan is making a grinding sound	<ul style="list-style-type: none">• Immediately switch off and contact Customer Services
The remote is not working	<ul style="list-style-type: none">• The batteries may need replacing• The remote is being used more than 5m away from the product
The air is dusty	<ul style="list-style-type: none">• Ensure fan is unplugged and set to OFF• Using a vacuum and crevice brush, gently vacuum the front grille

IMPORTANT!

KEEP BLADES CLEAN!

Wipe the blades with a damp cloth at least once every 3 months.

The blades may require more frequent cleaning if in a dusty environment.

Ensure that the fan is unplugged before cleaning.

3
MONTHS



Russell Hobbs

This product is guaranteed for 12 months from the date of the original purchase. If any defect arises due to faulty materials or workmanship, the faulty product must be returned to the place of purchase.

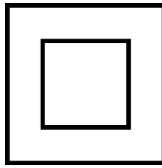
By registering your product you will get an additional year guarantee free of charge. Additional cover can be purchased through the website.

NOTES



Russell Hobbs

Russell Hobbs is a registered trademark used under license from Spectrum Brands (UK) Ltd. Made under license by Product Care Trading Limited, Wigan, WN2 4AY/PCT (NI) Ltd, Belfast, BT5 5AD
Russell Hobbs Support: call 0345 209 7461 or visit mda.russellhobbs.com



The 'wheelee bin' symbol is known as the 'Crossed-out wheelee bin Symbol'. When this symbol is marked on a product/batteries, it means that the product/batteries should not be disposed of with your general household waste. Only discard electrical/electronic/battery items in separate collection schemes, which cater for the recovery and recycling of materials contained within. Your co-operation is vital to ensure the success of these schemes and for the protection of the environment. For your nearest disposal facility, visit www.recycleyourelectricals.org.uk or ask in store for details.

SEDEX – Connecting businesses and their global suppliers to share ethical data and enabling improvement in ethical performance. Visit www.sedex.org.uk for further information.

We reserve the right, due to possible changes to design, to alter the instruction manual without prior notice.