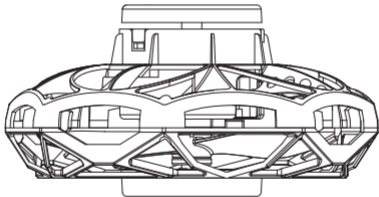


Ages **8+**

89842 / 89843

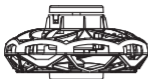
# VORTEX SPINNER

INSTRUCTION MANUAL



Please read this Instruction Manual carefully before use,  
and keep it for future reference.

## Accessories included in the package



VORTEX SPINNER



USB charging cable

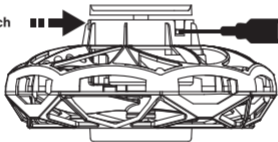


Instructions



We have the right to improve or modify the product, and the color may be different

Switch



USB charging cable



The Flyer must be upright

### Charging:

1. Make sure that the switch of the VORTEX SPINNER is off, and then plug the USB charging cable into the USB charging socket on a PC to charge.
2. The USB charging cable of the VORTEX SPINNER can be connected to the following USB charging device (5V 2A). Note: Please use the standard USB charging cable specific for this product. Do not use other USB charging cables not specifically for this product.
3. When charging, the LED light of the VORTEX SPINNER is red, and the light is off when fully charged. Note: When the red LED on the VORTEX SPINNER is all off, it means that it is fully charged, or the USB charging cable may not be connected.
4. VORTEX SPINNER's charging time is about 20 min.
5. Do not leave unattended whilst charging.
6. Adult supervision is required to charge the VORTEX SPINNER.



### Precautions:

Please do not fly the VORTEX SPINNER in a harsh environment.

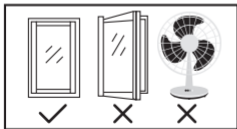
Please be sure not to fly in weather conditions such as rain, snow, strong wind, lightning and strong sunlight, so as not to damage the product or even cause physical injury.

### Flight Preparation:

- Check if the aircraft is fully charged
- Make sure there are no obstacles or rivers ahead

Follow these simple steps in the correct order and you will be able to successfully operate this product.

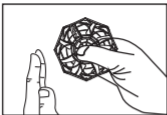
### Let's start!



Make sure all wind sources such as ceiling fans, floor fans and windows are closed. Central air-conditioning is good, be sure to stay away from strong wind areas.

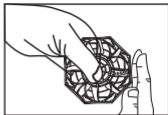
## How to operate:

1. Turn on



Grab the top and bottom of the VORTEX SPINNER with your index finger and thumb, slide the switch to the "ON" position; the LED light of the VORTEX SPINNER flashes, turn the VORTEX SPINNER with your wrist or the other hand, and the VORTEX SPINNER will start to work.

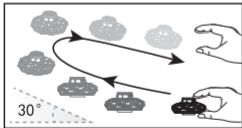
2. Shut down



Hold the VORTEX SPINNER shell for about 2s, and the VORTEX SPINNER stops rotating. Slide the switch to the "OFF" position and the VORTEX SPINNER will shut down.

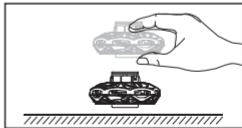
## Ways of playing:

1. Circle 30°



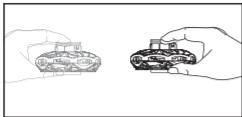
Push forward and release the aircraft tilting up 30°, it will fly in a loop and return. Note: The top of the VORTEX SPINNER must face upwards. The greater the tilt angle when the VORTEX SPINNER is thrown, the faster the VORTEX SPINNER will fly.

2. Suspension



About 10cm above the plane, keep the VORTEX SPINNER parallel and release the VORTEX SPINNER, it will bounce and suspend at 0-3cm above the plane. Note: The top of the VORTEX SPINNER must face upwards.

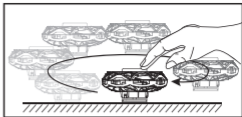
### 3. Multitplayer



Push forward and release the aircraft tilting up or parallel. It will fly forward for a distance and allow interactions.

Note: The top of the VORTEX SPINNER must face upwards. In interaction, you need to use your fingers to grab the upper and lower covers, and the VORTEX SPINNER will stop when the shell is grabbed.

### 4. Ground Gyro



Keep the VORTEX SPINNER parallel and 10cm above the plane. Release the VORTEX SPINNER, and the VORTEX SPINNER will rotate like a gyro on the plane at high speed. Hold the edge of the lower cover with your finger and pull it in any direction at will, the VORTEX SPINNER will circle round the plane until it is centered.

**Note: The top of the VORTEX SPINNER must face down.**

**This product is a skill-based toy with lots of fun. Please be patient and try the ways of playing!**

Please keep this manual for future reference.

**Adult instructions:** In order to confirm the safety and fun during use, please explain the operation method and precautions of the product carefully to your children.

Items included: 1 x VORTEX SPINNER 1 x USB charging cable

Note: safety information of the built-in battery The battery is not replaceable, please do not open, disassemble or replace the product in any way. The built-in USB charger is permanently connected to protect the VORTEX SPINNER, please only connect to the certificated USB port.

- Do not expose it to direct sunlight When the VORTEX SPINNER is hot, please do not continue to charge, and wait until it is cool before charging.
- Do not throw it or let it be subjected to strong impact
- Do not get the battery wet.
- Read the manual carefully and use the battery correctly
- The rechargeable battery shall be only charged under adult supervision
- Routinely inspect the damage of plugs, housings and other components. In any case of damage, the VORTEX SPINNER cannot be used with the USB interface until the damage is repaired
- Keep hands, hair and loose clothing away from the parts to avoid injury

## Cleaning instructions

You can wipe off the dirt on the VORTEX SPINNER with a dry cloth. Do not immerse the product in water, nor wipe it with any chemical cleaner.

## Waste disposal instructions

This product bears the selective sorting symbol for waste electrical and electronic equipment (WEEE). This means that this product must be handled pursuant to European Directive 2012/19/EU in order to be recycled or dismantled to minimize its impact on the environment. For further information, please contact your local or regional authorities. Electronic products not

included in the selective sorting process are potentially dangerous for the environment and human health due to the presence of hazardous substances.

## Hint

When the VORTEX SPINNER's LED light flashes slowly or it cannot fly, please turn off the VORTEX SPINNER and charge again before flying.

**Precautions:** 1. Please keep the VORTEX SPINNER away from your face and eyes. 2. Please stay away from light bulbs, fluorescent tubes and other fragile objects.

Manufactured & Imported by

### The Source Wholesale

The Atrium, Curtis Road,  
Dorking, Surrey RH4 1XA

### The Source Wholesale BV

Joop Geesinkweg 701,  
1114 AB Amsterdam-Duivendrecht

### The Source Wholesale Inc

2055 Limestone RD STE 200-c  
Wilmington, DE 19808 USA

Supplier item reference: FX39  
customer.services@giftuniverse.com

89842/89843 09/24

Made in Shantou, China

Please retain the important information on this packaging for future reference.



FR

Cet appareil et ses accessoires se recyclent

À DÉPOSER EN MAGASIN



OU

À DÉPOSER EN DÉCHÈTERIE



Points de collecte sur [www.quefairedemesdechets.fr](http://www.quefairedemesdechets.fr)

UK  
CA



FR



**WARNING:**

CHOKING HAZARD-Small parts.  
Not for children under 3 years.



**NOTE:** This equipment has been tested and found to comply with the limits for a Class B digital device, pursuant to part 15 of the FCC Rules. These limits are designed to provide reasonable protection against harmful interference in a residential installation. This equipment generates, uses and can radiate radio frequency energy and, if not installed and used in accordance with the instructions, may cause harmful interference to radio communications. However, there is no guarantee that interference will not occur in a particular installation. If this equipment does cause harmful interference to radio or television reception, which can be determined by turning the equipment off and on, the user is encouraged to try to correct the interference by one or more of the following measures:

- Reorient or relocate the receiving antenna.
- Increase the separation between the equipment and receiver.
- Connect the equipment into an outlet on a circuit different from that to which the receiver is connected.
- Consult the dealer or an experienced radio/TV technician for help.

