

18-36
months

Mini Vespa Electric Ride- On

Inspired by Vespa GTS



Installation & operation Manual



CAUTION:

- This package contains small parts
- Adult assembly required
- Remove all plastic bags and tires prior to giving to children
- Protective equipment recommended
- Not to be used in traffic
- Keep this instructions for future reference

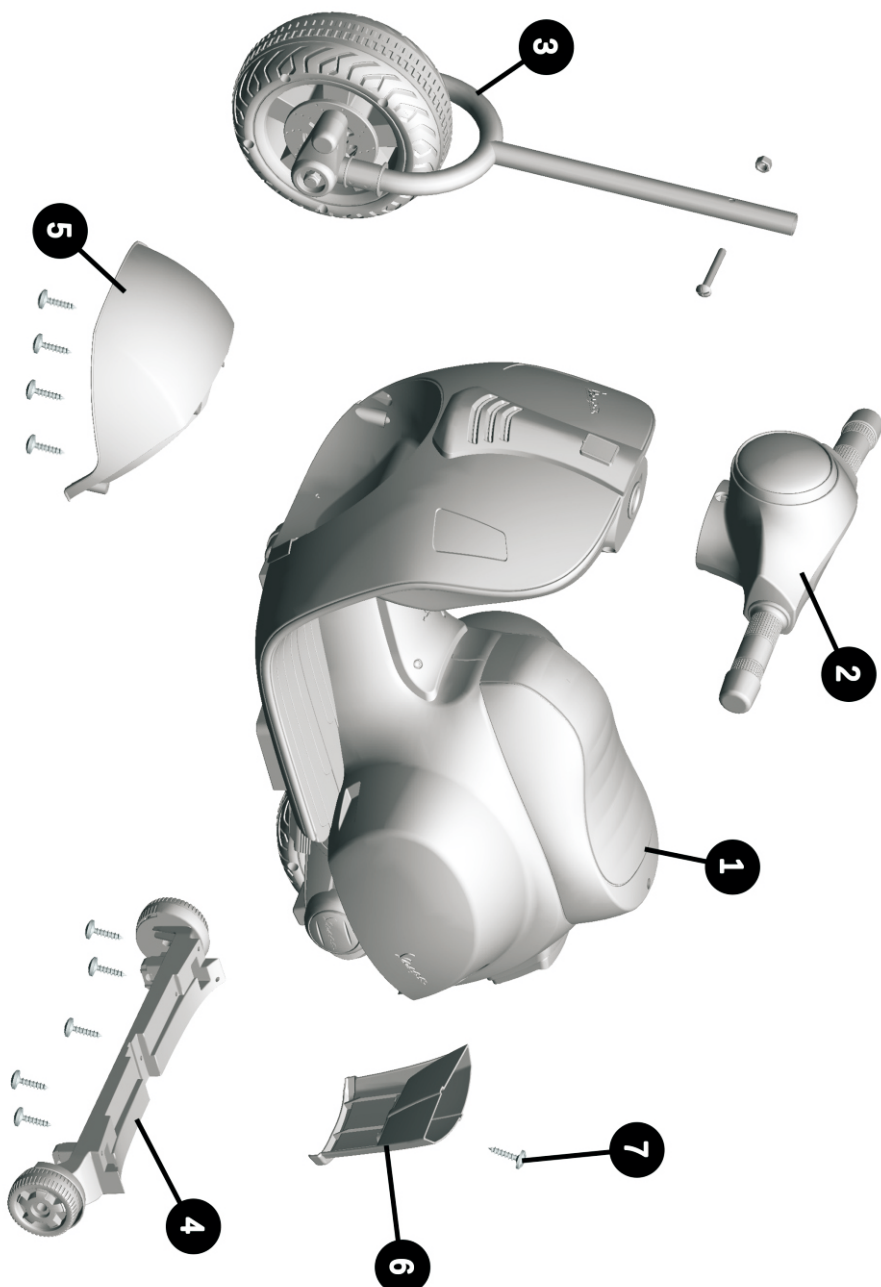


WARNING

**ADULT ASSEMBLY
REQUEST.**

IMPORTANT, RETAIN FOR FUTURE REFERENCE: READ CAREFULLY.









ASSEMBLY INSTRUCTION



I . SPECIFICATIONS.

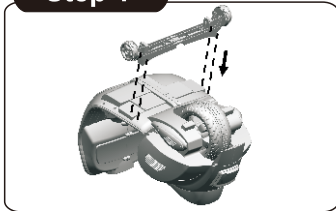
Suitable Age	18-36 months
Product Dimensions	66.5X38X52cm
Maximum Weight	25 kgs
Speed	2.5 km/h
Motor	30W
Charger	Input: AC 220V/110V
	Output:DC6V/500mA
Battery	6V4A/6V4.5A
Operating Ambient Temperature	0 - 40°C

II . Components List

1.Body 1pc 	2.Handle bar 1pc 	3.Front wheel 1pc 	4.Side wheel 1pc 
5.Front fender 1pc 	6.Rear fender 1pc 	7.Screw 11pcs (1 replacement piece) 	8.Charger 1pc 

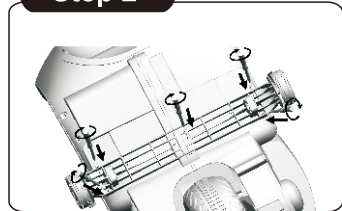
III . Assembly Instructions

<Step 1>



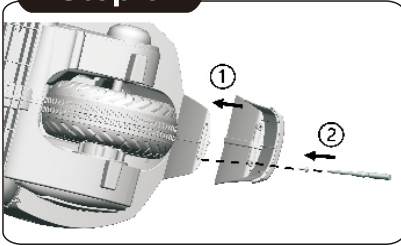
1.Place the side wheel over the location in the bottom of body.

<Step 2>



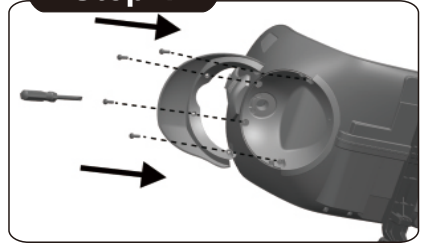
2.Tighten the side wheel by five screws with a screwdriver (not included).

<Step 3>



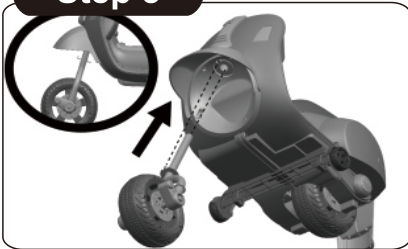
3. Place the rear fender over the location in the rear body, tighten by one screw with a screwdriver(not included).

<Step 4>



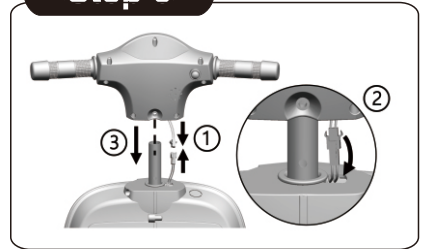
4. Place the front fender over the location in the front body, tighten by four screws with a screwdriver (not included).

<Step 5>



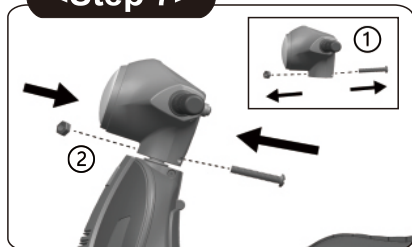
5. Insert the front wheel stick into the hole of the body, make sure the right position.

<Step 6>



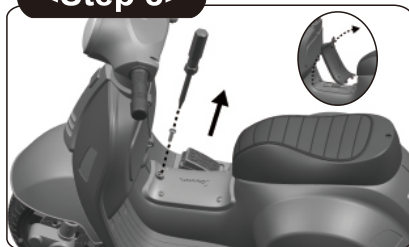
6. Connect the wire plug of the hole bar into the wire plug of the body, then insert the whole plug into the hole of the body.

<Step 7>



7. Loosen the bolt and nut by a screwdriver (not included) first. Then place the handlebar over the front wheel stick, insert the bolt into the hole and tighten by the nut.

<Step 8>



8. Loosen the screw in the battery cover with a screwdriver (not included), then open the battery cover.

<Step 9>



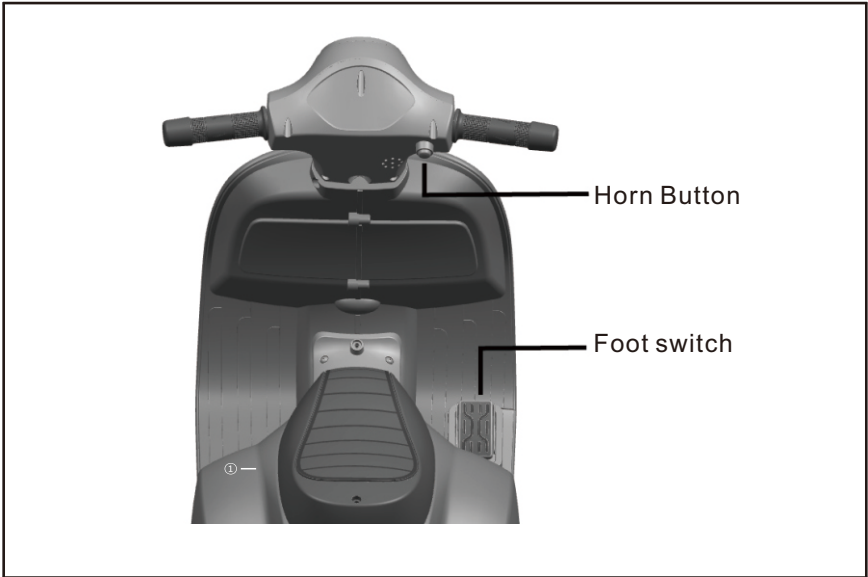
9. When the battery is installed, insert the red cable terminal into the battery positive pole.

<Step 10>



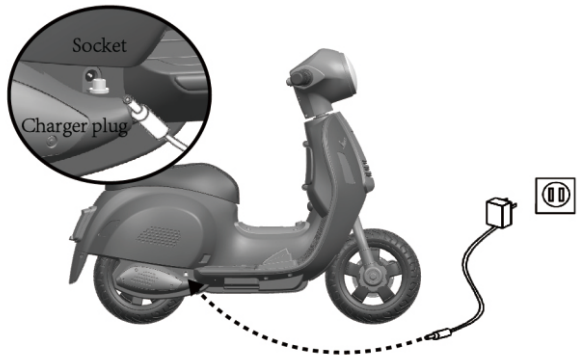
10. Close the battery cover and tighten by one screw with a screwdriver (not included).

IV. Function and Operation



V. Battery and Charger Operating Guide

1. The charging socket is located at the right side of the motorcycle.
2. The battery and charger which are provided or recommended can be used only.
3. Do not play with the charger and battery. They are not toys.
4. Battery charging must be carried out by adults only.
5. The battery shall be fully charged before first use. Charging will take between 9-10 hours.
6. Your battery will become warm whilst charging – this is normal.



VI. WARNING

1. Battery warning:

- 1) When storing the car for long periods, charge the battery until its complete, then turn off the power switch. The battery should be recharged once every two months, or it may shorten the life span and effectiveness when used.
- 2) When installing the battery, it is important that the positive and negative poles are correctly connected. Short circuiting of positive and negative poles may result in damaging the toy.

2. Product warning:

- 1) There might be sharp edges and points or small parts during assembly - this product must be assembled by an adult.
- 2) To avoid suffocation, keep any plastic bags away from children. Dispose of all bags immediately.
- 3) Children must use this car under adult guidance and supervision.
- 4) The car is suitable for use on flat ground and is prohibited being driven in dangerous places such as public roads, slopes and near swimming pools and water.
- 5) Ensure children are wearing shoes and protection equipment such as a helmet, gloves and knee pads, before use.
- 6) Regularly check whether the battery, charger, wire, plug, casing and other parts are not damaged: if any parts are found to be damaged, stop using this car immediately, until it is repaired.
- 7) This product is for use by children only, with a maximum load of 25kg. Keep away from fire.

The product instructions shall be kept as they contain important information.

3. WARNING

- Adult supervision required to reduce the risk of injury;
- Strictly forbidden to use on roadways, near motor vehicles, slopes or swimming pools and areas where there is water;
- Please wear shoes when operating vehicle;
- Can only be used by one person at a time;
- Keep away from children before assembled as there may be sharp edges points or small parts.
- Adult assembly required.



Do not mix together alkaline, carbon-zinc or rechargeable (nickel-cadmium) batteries.

VII . Care and Maintenance

- 1) Regularly wipe clean with cloth.
- 2) The rotating parts of the car should be checked regularly to check for any obstructions. This bike should be lubricated regularly to keep it working correctly.

If you have any questions, please contact our customer care center.
Our contact details are below:



0044-800-240-4004



enquiries@mhstar.co.uk

IMPORTER ADDRESS:
MH STAR UK LTD
Unit 27, Perivale Park,
Horsenden lane South
Perivale, UB6 7RH
MADE IN CHINA

