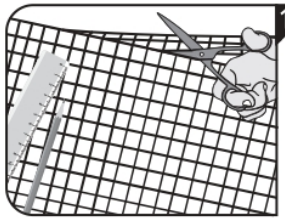


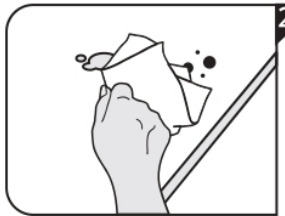


## Instructions for use – Self-adhesive design films

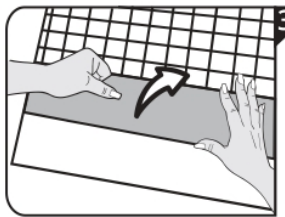
Surface characteristics: smooth and even surface, free of dust, grease, silicone, chalk



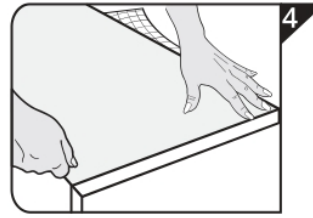
**1** Mark the desired overall dimensions of the film on the backing paper, including an additional allowance of 2 to 3 cm, and cut it to size with scissors.



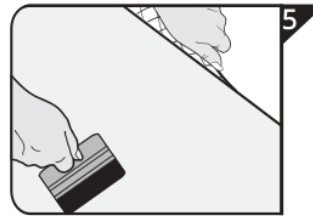
**2** Thoroughly clean the surface which the film is to be applied to. The surface must be free from dust and greasy substances.



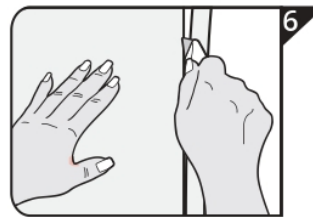
**3** Peel approx. 5 cm of the backing paper away from the film and fold it over, so that only a small area of the film's adhesive surface is revealed.



**4** Position the revealed section of the film's adhesive surface carefully onto the surface and smooth it into place, using a smoother.



**5** Now gradually peel further sections of the backing paper away from the film, each time smoothing the revealed adhesive section of the film firmly into place with the smoother.



**6** For straight edges, cut away any excess areas of film with a sharp cutting knife and, if necessary, use a ruler or straight edge to give a neat finish.

### Care instructions:

d-c-fix® Adhesive films can be cleaned using commercially available cleaning agents – warm water and a little washing-up liquid works best. Dry off damp areas using a soft cloth.