

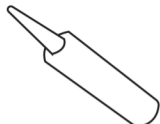
How To Install Your Glass Splashback

Warren Reed
DESIGNER

What you need



Tape Measure



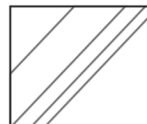
Silicone Sealant -
Low Modulus Type



Sealant Gun



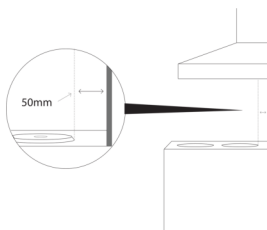
Clean Cloth



1 x Splashback

Before You Start

- 1 Ensure the Splashback fits the space.

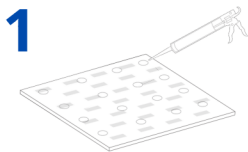


- 2 Keep the Splashback 50mm from heat sources.

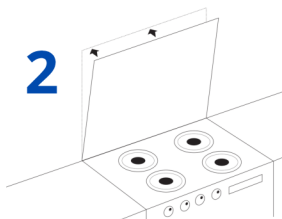
- 3 Ensure the surface is flat, dry, and dust-free.

Only use CLEAR
Natural Curing
Silicone

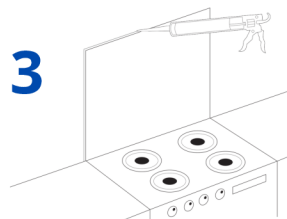
Easy To Apply



- 1 Lay the Splashback face down on a soft surface.
Apply silicone rings 50mm apart on the back.



- 2 Align the Splashback with the hob, press it to the wall, and apply firm pressure. Let it dry for 24 hours.



- 3 Seal edges with silicone, no thicker than 2.5mm.