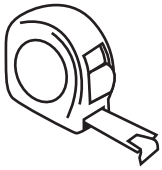
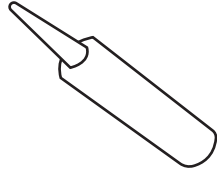


# How to install Glass Splashbacks

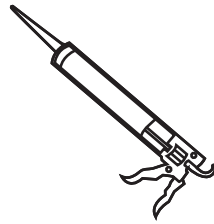
## What you need



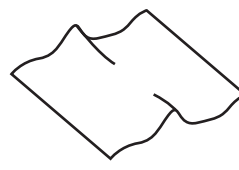
Tape Measure



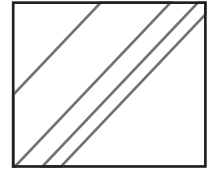
Silicone Sealant -  
Low Modulus Type



Sealant Gun



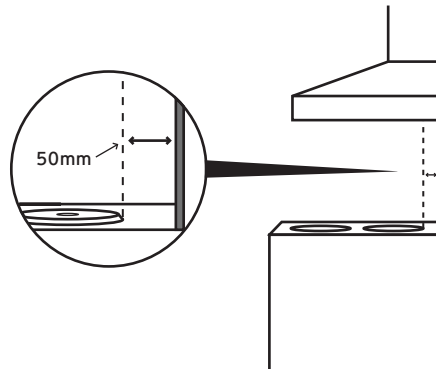
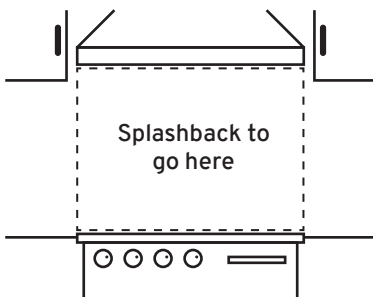
Clean Cloth



1 x Splashback

## Before you start

- 1** Check that your Splashback fits into the required space.



- 2** Your Splashback must be at least 50mm away from the nearest heat source.

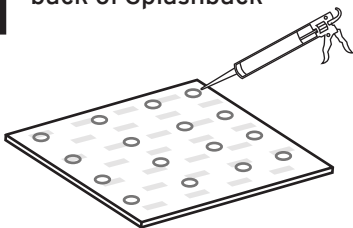
- 3** Check the surface is perfectly flat, non-porous, dry and dust free.

Our splashbacks are made from toughened safety glass so they cannot be cut.



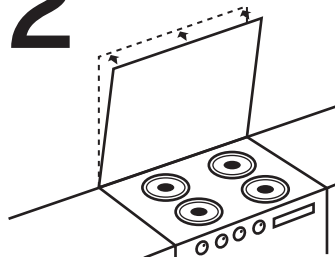
## Easy to Apply

- 1** Add silicone to the back of Splashback



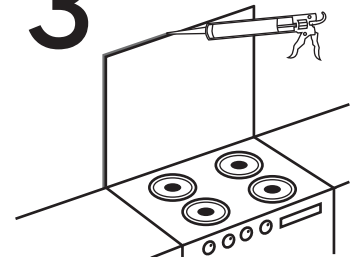
Place the Splashback on soft protective surface face down. Apply rings of silicone to the printed side of the Splashback roughly 50mm apart.

- 2** Stick on the wall



Place the bottom edge of the splashback to the rear of the hob. Push it to the wall and apply firm even pressure with the cloth. leave to dry for 24 hours

- 3** Seal the edges



Seal the edges using the silicone sealant (no more than 2.5mm in thickness).