

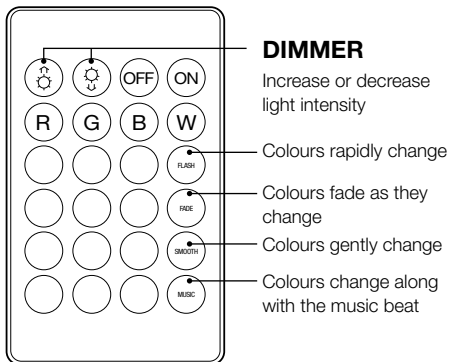


Thank you for purchasing Mood Magic Beat Led Lights from JML. To get the best results, please read these instructions in full and keep them safe for future reference.

Safety Warnings & Advice

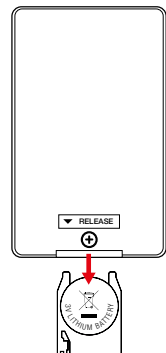
- This is not a toy • For indoor use only • Keep out of the reach of children
- Spotlights: 3x AAA 1.5V alkaline (not included); Remote: 1x CR2025 3V
- Do not mix alkaline and standard (carbon zinc) batteries, or rechargeable (nickel cadmium) batteries. Remove exhausted batteries • Ensure button cell batteries are locked away and disposed of safely. If swallowed by small children they can get stuck in the throat and cause severe burns. If your child does swallow a button cell battery seek medical advice immediately.

Your Mood Magic Colour Changing LED Lights



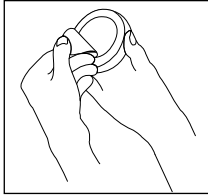
Remote control battery replacement

1. Unscrew the safety screw in the battery holder.
2. Locate the battery tab at the bottom of the remote and press the locking mechanism to release.
3. Once released remove the battery holder completely from the remote.
4. Replace the old battery with the new one and place the battery holder back into the remote.
5. Fix the safety screw again.

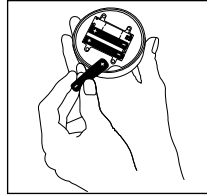


Note: remote requires: 1x CR2025 included. Screwdriver not included.

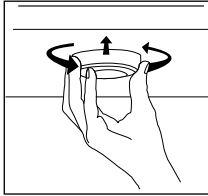
Using Your Mood Magic Beat Lights



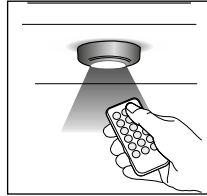
1. With batteries installed, check LED function. Then, peel off backing to expose sticky pad.



3. Insert 3x new 'AAA' alkaline batteries (not included) and re-attach the main unit to base.



2. Stick spotlight to a clean, dry, flat surface. Twist to remove main unit from the base.



4. To turn on/off use the remote supplied or press the front lens. Press 'Music' button on the remote to activate sound-reacting feature.

Note: The LED lights react to soundwaves they pick up. The lights therefore may not sync with each other as it depends on the distance each unit is from the source of sound.

Cleaning & Care

Wipe dry with a clean cloth.

Guarantee

This product is unconditionally guaranteed for one year against all defects of workmanship and materials. This guarantee does not

affect your statutory rights. If you have any problems or queries about this product please contact JML customer services.



Distributed in the UK by: JML, Unit 1 Eastside, Port of Tyne, South Shields, NE33 5SP.

Distributed in the EU by: JML GmbH, Rheinstraße 3, 63225 Langen, Germany.

Customer Services: UK: 0800 781 7831 (Freephone). ROI: 041-978 0003 (Local rate)

Email: info@JMLgroup.co.uk. Web: www.JMLdirect.com

©JohnMillsLtd/RC/07.22/399/A. Made in China

