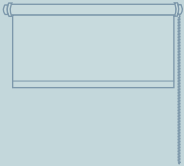
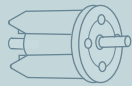


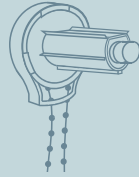
1X ROLLER BLIND ON METAL TUBE



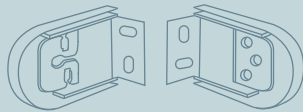
1X END UNIT



1X SIDEWINDER MECHANISM



2 X BRACKETS



4X SCREWS AND 4X RAWL PLUGS



1X CHILD SAFETY WALL CLEAT



TOOLS NEEDED TO FIT

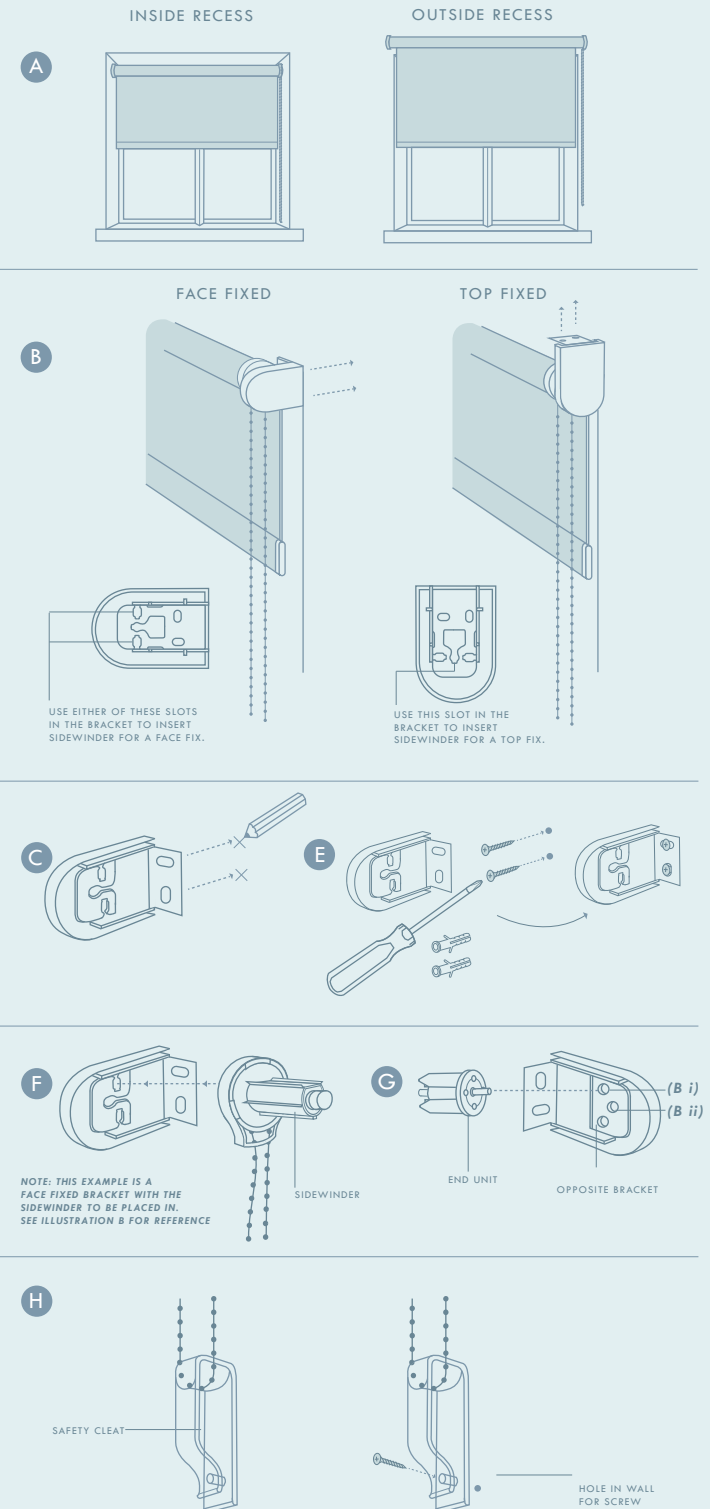
- PENCIL
- TAPE MEASURE
- DRILL AND 6MM BIT
- PHILIPS SCREWDRIVER

TOOLS NEEDED TO CUT

- PENCIL / PEN
- TAPE MEASURE
- SHARP SCISSORS OR MATERIAL BLADE
- HACKSAW OR MITRE SAW
- FLAT LARGE SURFACE

- A** DECIDE WHETHER YOUR BLIND WILL BE FITTED **INSIDE YOUR RECESS** OR **OUTSIDE YOUR RECESS**.
IF CUTTING YOUR BLIND PLEASE GO TO SECTION 3 'HOW TO ALTER YOUR BLIND'.
NOTE: YOU WILL NEED TO REMOVE THE PLASTIC BRACKET COVERS BEFORE FITTING. YOU CAN RE-ATTACH THEM LATER.
- B** DECIDE WHETHER YOU WILL BE FACE FIXING OR TOP FIXING YOUR BRACKETS.
- C** THEN USING THE HOLES ON THE BRACKET, CREATE PENCIL MARKS IN YOUR WALL READY FOR DRILLING.
TIP: ASSEMBLE YOUR BLIND BY PLACING ALL THE FITTINGS AND BRACKETS IN THE BLIND ON THE FLOOR. MEASURE YOUR TOTAL WIDTH (BRACKET END TO BRACKET END) TO GET YOUR TOTAL FITTING WIDTH. YOU CAN THEN USE THIS MEASUREMENT TO MARK WHERE YOU WILL PLACE YOUR BRACKETS.
- D** DRILL THE MARKS YOU HAVE MADE WITH A 6MM DRILL BIT AND INSERT YOUR RAW PLUGS, THEY MAY NEED A BIT OF FORCE TO INSERT FULLY.
- E** USING A PHILIPS SCREWDRIVER AND THE SUPPLIED SCREWS FIT THE BRACKETS SECURELY TO YOUR WALL
- F** SECURELY PLACE THE SIDEWINDER INTO THE ROLLER BLIND TUBE
- G** SECURELY PLACE THE END UNIT INTO THE OTHER END OF THE ROLLER BLIND TUBE. YOUR BLIND CAN NOW BE FITTED INTO THE WALL BRACKETS
TIP: IF YOU HAVE YOUR BRACKET'S FACE FIXED THEN SLOT YOUR BLIND IN THE TOP HOLES. (See B i in diagram)
IF YOU ARE TOP FIXING, SLOT YOUR SIDEWINDER AND END UNIT PARTS INTO THE MIDDLE HOLES. (See B ii diagram)

- H** FIT YOUR SAFETY CLEAT TO THE WALL TO MAKE YOUR SIDEWINDER CHAIN TAUGHT. THIS NEEDS TO BE A LEAST 1 METRE OFF THE GROUND TO CONFORM TO SAFETY STANDARDS.



FOR RECESS FITTING

- A MEASURE THE EXACT RECESS WIDTH WHERE YOU WILL FIT YOUR BLIND
- B LAY YOUR BLIND ON A LARGE SURFACE STILL ROLLED
- C DEDUCT 3CM FROM YOUR ORIGINAL MEASUREMENT
- D MARK AND CUT YOUR BLIND WITH A HACKSAW OR ELECTRIC SAW
- E ROLL OUT THE BLIND COMPLETELY ON A LARGE SURFACE AND TRIM 1CM OF MATERIAL AWAY FROM THE CUT END TO EXPOSE A SMALL BIT OF TUBE THE SAME AS THE OTHER SIDE. THIS IS TO PREVENT THE SIDES FROM CATCHING AND FRAYING WHEN OPERATED

FOR FITTING OUTSIDE RECESS

- A MEASURE THE AREA YOU WANT THE MATERIAL TO COVER
- B LAY YOUR BLIND ON A LARGE FLAT SURFACE STILL ROLLED
- C ADD 1CM TO YOUR ORIGINAL MEASUREMENT
- D MARK AND CUT YOUR BLIND WITH A HACKSAW OR ELECTRIC SAW
- E ROLL OUT THE BLIND COMPLETELY ON A LARGE SURFACE AND TRIM 1CM OF MATERIAL AWAY FROM THE CUT END TO EXPOSE A SMALL BIT OF TUBE THE SAME AS THE OTHER SIDE. THIS IS TO PREVENT THE SIDES FROM CATCHING AND FRAYING WHEN OPERATED.

TIP: IF FITTINGS OUTSIDE THE RECESS WE SUGGEST AND OVERLAP BY 4CM EITHER SIDE OF YOUR WINDOW

ROLLER BLIND FIXING INSTRUCTIONS

HOW TO ALTER AND FIT YOUR ROLLER BLIND

