

sendero 6 instructions

Recommended number of people for pitching: 1-2

parts list

- 1 x Flysheet (outer waterproof layer)
- 1 x Inner Tent
- 3 x Poles
- 1 x Bag of Pegs

pitching instructions

A

Select your site; ideally smooth ground on a slight incline (water settles on flat). Remove any debris.

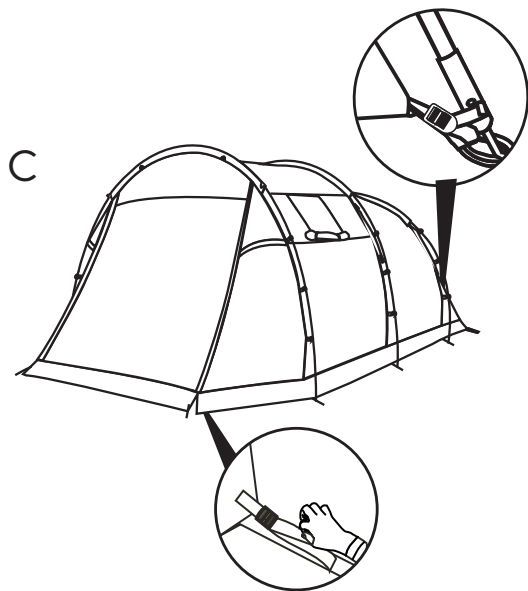
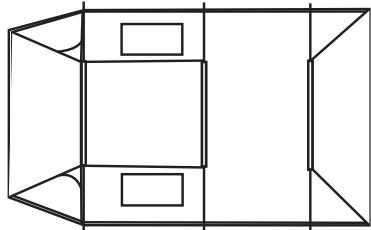
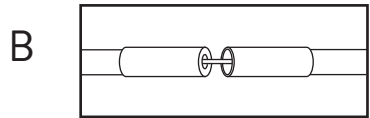
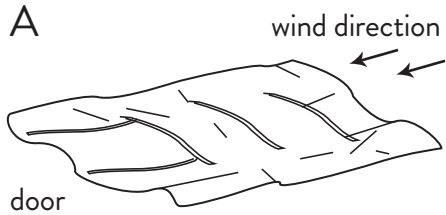
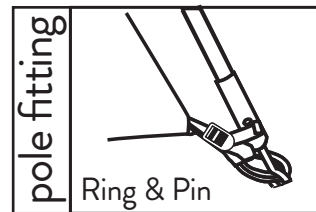
(Layout the flysheet on the ground with the door facing away from the prevailing wind. If it is windy, hammer in a few pegs to stop tent blowing away. Ensure the door is zipped closed.)

B

Assemble the poles and push them through the sleeves on the outside of the flysheet.

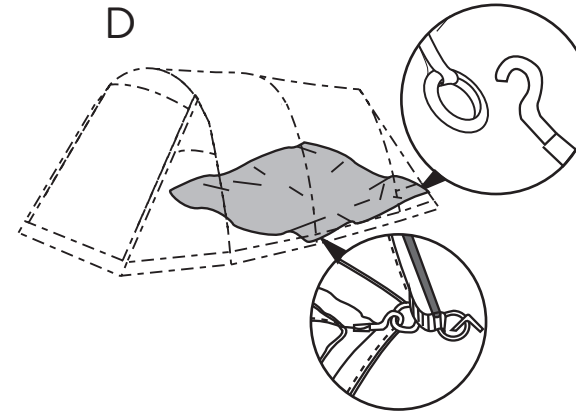
C

Take one pole and insert the pin into the metal tube (ferrule) on the pole end and gradually apply pressure to the pole to bend it into an arch to fit the pin into the opposite end of the pole. Repeat process for the remaining pole.

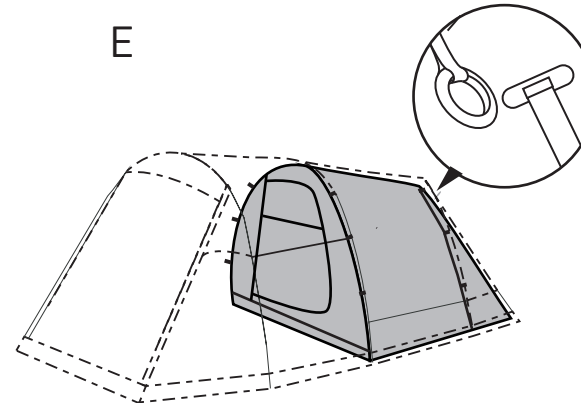


inner fitting

D



E



F



D

Take the inner tent inside and orientate so the doors are aligned. Clip the hooks on the corners of the inner ground sheet to the corresponding ring on the fly sheet.

E

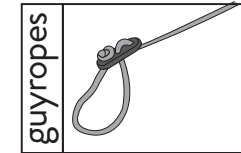
The inner tent hangs inside the flysheet from toggles. Connect the rear toggles first then work forward.

F

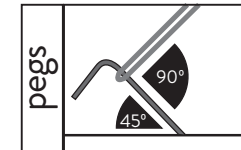
Peg out all guyropes and peg points. Adjust guyropes to ensure even tension across all.

guyrope tension adjuster

Each guyrope has a plastic slider, in order for this to function correctly, create a loop as shown below. Peg through this loop and move the slider up the rope to gain tension.



For optimum hold, pegs should be hammered into the ground at approx 45 degree angle. Guyropes should be 90 degrees to the peg.



dismantling instructions

The inner tent can be left attached inside the flysheet for quicker pitching next time. Remove all pegs and neatly roll up and tie all guyropes.

TAKE CARE-poles will be under tension when removing from pins.

Remove the poles; push out of the sleeves, do not pull.

Place poles into pole bag, pegs into peg bag. Fold the tent fabric neatly and roll around the pole bag.

Roll as tightly as possible to ensure it will fit into the tent bag. Remember to pack all pegs.