

# HIPPO


## PRESTIGE 4in1

LOW MODULUS  
**SILICONE**  
KITCHENS  
BATHROOMS  
GLAZING  
JOINTS



SLIGHT COLOUR DIFFERENCE WITH REAL SILICONE COLOUR AND PRINTED COLOUR POSSIBLE

### AVAILABLE COLOURS

 = Suitable for underwater applications with use of a primer

FIND OUT MORE



#### MATT COLOURS



#### GREY TONES



#### METALLIC TONES



#### GREEN TONES



#### BROWN TONES



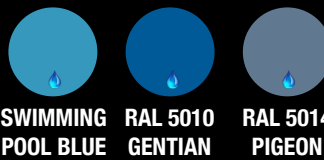
#### BEIGE TONES



#### WHITE TONES



#### BLUE TONES



#### BLACK TONES



#### RED TONES



#### YELLOW TONES



#### TRS



AVAILABLE IN 50+ COLOURS



# APPLICATIONS



**KITCHEN JOINTS AROUND UNITS, WORKTOPS AND SINKS.**



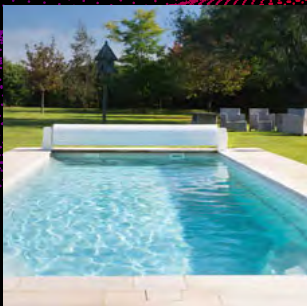
**SEALING AROUND BATHS, SHOWERS, SINKS AND TOILETS.**



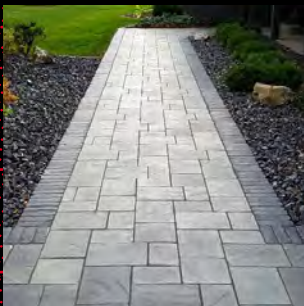
**TOP SEAL FOR GLAZING, WINDOW SILLS AS WELL AS DOOR AND WINDOW FRAMES.**



**JOINTS BETWEEN FLOORS, WALLS AND SKIRTING BOARDS.**



**SWIMMING POOL COPING JOINTS AND TILES.**



**INTERIOR AND EXTERIOR JOINTS.**



# THE ULTIMATE 4 IN 1 SEALANT

- INTERIOR & EXTERIOR
- AVAILABLE IN 50+ COLOURS
- FLEXIBLE SILICONE
  - FOODSAFE
- 300ML CARTRIDGE

## Technical Characteristics

Skin Formation	15 mins
Curing	24 hours with a 2.5mm
Density	Translucent Base: 1.0g/ml White & Coloured Base: 1.31g/
Shore A Hardness	Translucent Base: 20 White & Coloured Base: 32
Modulus	Translucent Base: 0.34 N/mm <sup>2</sup> White & Coloured Base: 0.48 N/mm <sup>2</sup>
% Elongation of Break	Translucent Base: 250% White & Coloured Base: 180%
Elasticity	20%
Process Temperature	+5°C -40°C
Service Temperature	-50°C +150°C

\* Compatible with most building materials\*

