

# NOPE!® Clothes Moth Traps

## Product Description

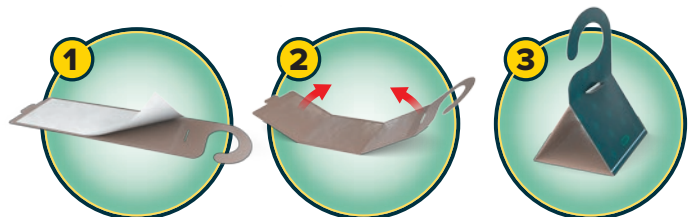
**NOPE!® Clothes Moth Traps** are designed for monitoring the presence of common clothes moths (*Tineola bisselliella*). The trap contains a species-specific pheromone that attracts adult male common clothes moths to its adhesive surface. It is designed for use as part of a common clothes moth control strategy.

## Benefits

- Pheromone based attractant for common clothes moths (*Tineola bisselliella*)
- Allows monitoring of active common clothes moth infestations
- Fold out triangular design – discreetly conceals trapped common clothes moths
- Odourless and non-toxic for safe indoor use

## Properties

Appearance	Fold-out hanger with sticky surface
Recipe Type	Pheromone-based
Size(s) & Packaging	6 × traps in silver foil sachets
Storage	Avoid excessive dust, moisture or direct sunlight
Shelf Life	3 years



**1** Place the trap on a flat surface and remove protective sheet.

**2** Fold the left and right panels upward along the creased lines.

**3** Clip together to form a triangle, locking the tab into the slot.

## Application

Read the label before use. Place the trap on a flat surface and peel off the protective sheet. Fold the left and right panels up along the crease lines. Clip the two sides together to form a triangle. Lock the tab into the slot. The trap assembly is now complete.

Place **NOPE!® Clothes Moth Traps** in locations where common clothes moth infestations are likely (as defined above). They can be placed on surfaces or hung from hooks or clothes rails. Avoid placing traps near open windows or floors, as these are unlikely to catch common clothes moths. **NOPE!® Clothes Moth Traps** are effective for up to 3 months.

Monitor traps regularly. If common clothes moths are present, then take steps to eradicate the infestation, including using **NOPE!® CP Moth Killer Spray** where necessary (see “Prevention” section overleaf).

Keep using **NOPE!® Clothes Moth Traps** to monitor the control steps taken and detect reinfestations.

Unintentional contact with glue can be removed using isopropyl alcohol, then washed with detergent.

## Application Information

### Preparation

**NOPE!® Clothes Moth Traps** are an important part of a common clothes moth (*Tineola bisselliella*) control strategy. Adult clothes moths are around 6-8 mm long, with a light golden-brown body and distinctive red-gold wings with fringed tips. Please note, these traps will not attract other species of moth, such as case-bearing clothes moths, Indian meal moths or brown house moths.

Identify areas where moths are likely to be found. Common clothes moths favour dark, undisturbed environments with humidity levels above 70% and access to animal-based fibres such as wool, silk, feathers, fur and leather. They are most likely to be found in wardrobes, closets or clothing storage areas.

## Prevention and Control

To help eliminate the current infestation and reduce the risk of future infestations, consider taking the following steps:

1. Regular vacuum cleaning – vacuum carpets, clothing storage areas, and upholstered furniture thoroughly to remove larvae, eggs and food sources. Take particular care around dark and undisturbed areas, such as beneath furniture and inside wardrobes.
2. Launder at-risk textiles – wash animal fibre garments and tumble dry them for at least 30 minutes before storage.
3. Control indoor humidity – maintain indoor humidity between 40 – 50% to deter infestations.
4. Use sealed textile storage – consider storing animal fibre clothes and other materials in vacuum bags and other airtight containers.
5. Inspect for signs of moths – examine stored clothing and soft furnishings regularly for signs of moth activity such as frass (droppings), silk webbing or irregular holes in fabrics.
6. Use Moth Killer Spray – NOPE!® CP Moth Killer Spray can be applied to soft furnishings, as space sprays for empty wardrobes and for the interior surfaces of wardrobes and drawers.

## Other Information

For full health and safety information, consult the safety datasheet (SDS). Always read the label before use.

---

*Information given is in good faith based on experience and usage, however all recommendations are made without warranty or guarantee, since the conditions of use are beyond our control. All goods are sold in accordance with our Conditions of Sale, copies of which are available on request. Customers are advised that products, techniques and codes of practice are under constant review and changes occur without notice; please ensure you have the latest updated information.*